



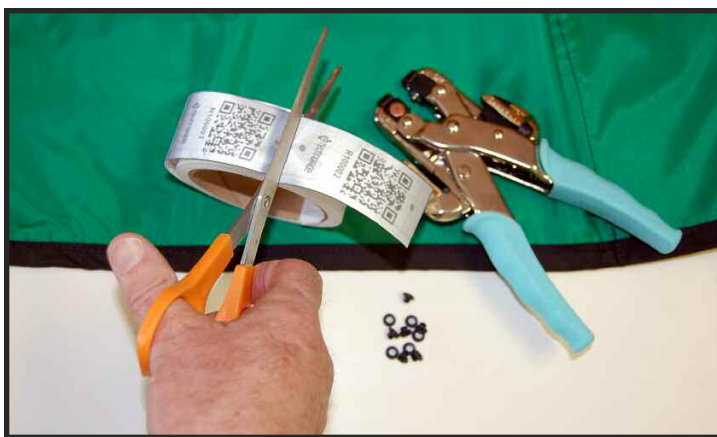
INSTRUCTIONS: Retrofit QR Code Tracking Label

(or adding an eyelet for a Year Tag)



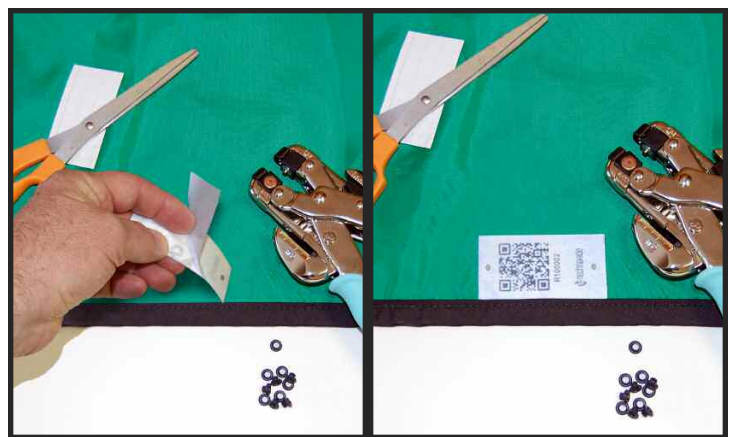
Step 1: Set-Up

Four Items Needed: punch/eyelet tool, QR Code labels, scissors, two (2) eyelets.



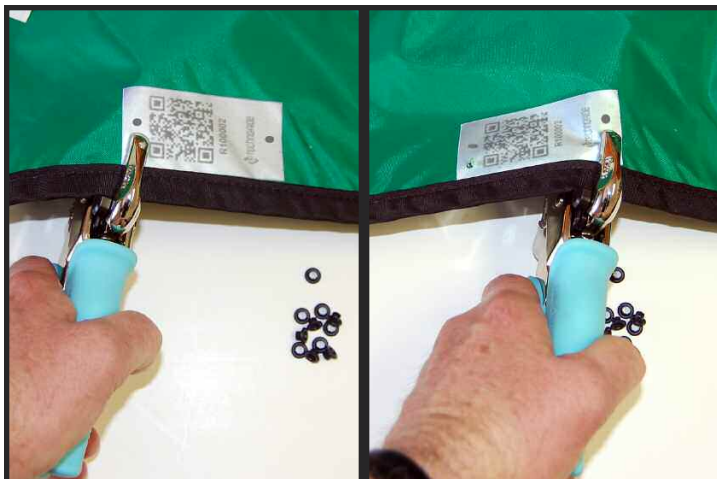
Step 2: Label Cutting

Cut a label from the roll at the dash marks.



Step 3: Label Peel & Stick

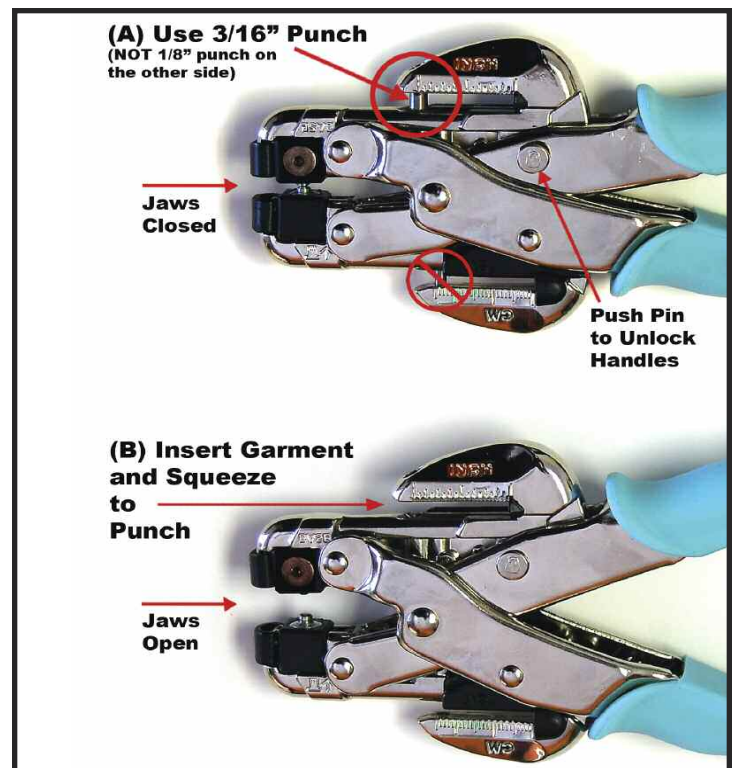
Peel the paper backing off the label and stick the label onto the garment, abutting the hem.

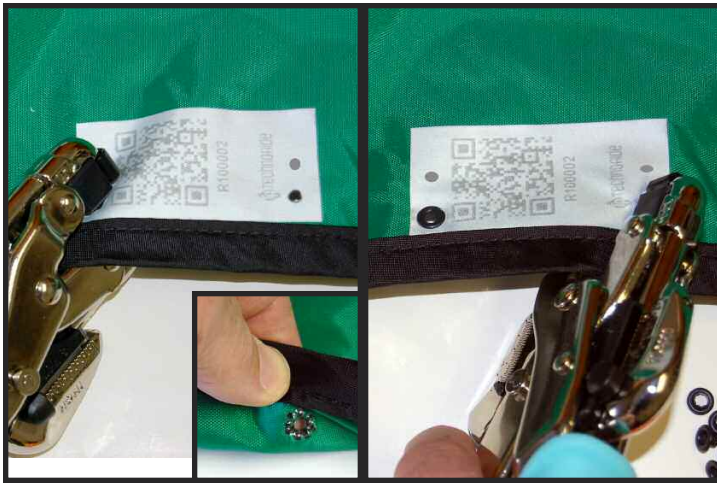


Step 4: Punch Two Holes

Slide the hem of the garment into the 3/16" punch side of the tool as far as it will go, aligning with the black dot on the label. Squeeze the handles to punch the hole in the garment.

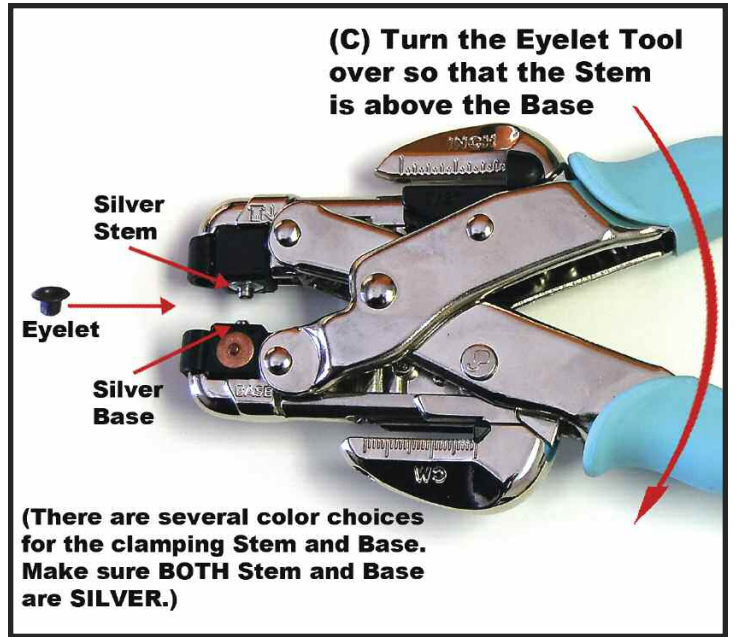
[DO NOT PUNCH through the QR Code square or the scanner will not be able to read the code!]





Step 5: Install Two Eyelets

Push an eyelet into a hole that was punched into the label. Insert the silver stem of the tool into the eyelet. Squeeze the handles. Repeat for the other eyelet.



Finished Installation

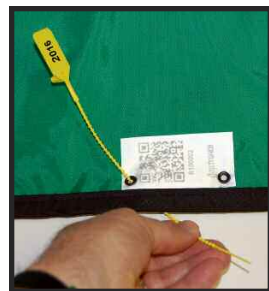


Finished Underside

Optional: Visual Year Date Tag



Step A: Create an Eyelet from Steps 4 & 5 above or Use an Existing Eyelet



Step B: Thread the Tag Stem



Step C: Insert & Pull the Tag Stem



Step D: Clip the Tag Stem



Finished Tags



Year Tag: Insert, Zip, and Clip the stem.

To replace: Cut the stem and repeat with the preferred year.

