



CT

2019
PRODUCT
GUIDE

Portable Blanket Warmer Bags

With AC or 12V Power Supplies

Designed for radiology and CT departments, these specially insulated blanket warmers keep warmed blankets warm. The durable and washable nylon exterior bag features a handy hook and loop closing flap. The removable interior heating elements keep the temperature at a steady 130° - 140°F when plugged into an optional, low voltage power supply. These lightweight and portable bags are designed and assembled in the USA and come with a 1-year warranty.



HOLDS 2-3 BLANKETS

#BWS-03-AC
#BWS-03-DC
#BWS-03-CB
Call for pricing

HOLDS 4-5 BLANKETS

#BWS-05-AC
#BWS-05-DC
#BWS-05-CB
Call for pricing

HOLDS 6-7 BLANKETS

#BWS-07-AC
#BWS-07-DC
#BWS-07-CB
Call for pricing

Power Options

Choose between an AC Adapter (AC), DC Adapter (DC) or both (CB)!



Blanket Warmer Cabinets

Designed for radiology and CT centers. These stainless steel blanket warmers are adjustable from 98° to 180°F (37° to 82°C) with the help of an intelligent 4-digit LED controller. With no moving parts and an audio-visual temperature alarm, these heavy duty units are designed for safety and built to last. All three units come with hospital grade power cords. The two largest units include locking casters. Operational at either 120VAC or 220VAC. All units are UL & CSA approved.



COUNTERTOP UNIT

Holds 7 bed sized blankets.
16" x 24" x 20"
70 lbs.

#BW-210
Call for pricing

SHORT CABINET

Holds 25 bed sized blankets.
22" x 29" x 40"
170 lbs.

#BW-710
Call for pricing

TALL CABINET

Holds 50 bed sized blankets.
22" x 29" x 70"
350 lbs.

#BW-1400
Call for pricing

NEW Contrast Warmer

This model features a solid locking door and LCD temperature display which is easily seen. Each warmer is constructed using a high-grade aluminum interior and a cold-rolled powder-coated steel exterior. All models are supplied with both a fixed bottom shelf and an adjustable shelf. The heating element is located behind the back panel of the unit to provide for uniform heat and excellent utilization of space.

CW-201 \$1850.00

Electrical 115 volt/50-60 Hz or 230volt/50-60 Hz
Temp Range Ambient +5°C to 60°C
Stability @ 37°C ±1.5°C
Uniformity @ 37°C ±1°C
Weight 22 lb./10 kg

Chamber		Overall Dimensions	
Volume	0.8 cu. ft.	Area	1.7 ft.2
Dimensions (in)	1½ x 12 x 10½	Dimensions (in)	13 x 14 x 16¼
Dimensions (cm)	29.2 x 30.5 x 26.7	Dimensions (cm)	33 x 35.6 x 41.3



NEW Medium Narcotics Locker NEW Large Narcotics Locker

Medium size stainless steel narcotics locker designed to federal standards. Can be wall mounted or placed inside another cabinet. Features a single door with two core locks, keyed different. Keys cannot be removed in the unlock position. Welded heavy guage double wall reinforced construction. Full height piano hinge with welded pin. One shelf, height adjustable. Optional door switch activates optional remote warning light when door is open. Size: 15" w x 11" h x 9" d

Cat# TANL-10
\$765.00

Can be wall mounted or placed in another cabinet



Large size stainless steel narcotics locker designed to federal standards. Features two doors (one behind the other). Each door has a core lock, keyed different. Keys cannot be removed in the unlock position. Outer door cannot be closed if key is left in inner door. Welded heavy guage double wall reinforced construction. Full height piano hinge with welded pin. Three shelves, height adjustable. Optional door switch activates optional remote warning light when door is open. Size: 15" w x 11" h x 9" d

Cat# TANL-20
\$1100.00



CT/PET Resting Chair

Keep your patients comfortable with the right injecting/resting chair for your facility. This recliner comes in a beautifully designed package. Ideal for environments where patients need to sit and relax for long periods of time, such as Oncology and PET Centers. This recliner makes the care, treatment, and recovery of patients more comfortable in an array of clinical settings. Upholstered arm option is also available to replace currently shown wood arms. Features high density foam in the seat, back and armrests for maximum patient comfort. Recliner mechanism features dual gas cylinders for a smooth power assistance during back adjustment and Trendelenburg activation.



Cat# CMT-IC07
Call for pricing

Capacity 450 lbs

Seat

Height 21.5"
Width 20.5"
Depth 23.5"

Overall

Height 50"
Width 33"
Depth 36"



Comfort Step Platform
Mounted to left side of recliner and can be folded down when not being used.



Optional IV Pole Mount
Installed on left side of recliner and allows for use of IV pole.

Optional Side Table
Mounted to left side of recliner and can be folded down when not being used.



Recline Positions

- First or Upright position: Ideal for patient transport and to start IV's
- Second or First Recline position: Ideal for starting IV's and resting
- Third or Full Recline position: Ideal for starting IV's in nervous patients and rest
- Fourth Position or Trendelenburg:

The Trendelenburg (or shock) position must be activated by the technologist
This cannot be activated by the patient while they are sitting in the recliner



Upright Position



Upright Position with Legrest Extended



First Recline Position



Full Recline Position



Trendelenburg Position

Spin-Lift Adjustable 5-Leg Stool

Solid steel, machined thread screw adjusts height by rotation of the stool cushion. Adjustable height: 18" to 22". 16" x 4" thick seat cushion. 5-leg, die cast aluminum base. 23" base provides excellent stability.

#BAS-40
\$325.00



Spin-Lift Adjustable 4-Leg Stool

Solid steel, machined screw adjusts height by rotation of the stool cushion. Adjustable height: 19" to 25½". 14½" x 4" thick seat cushion. 4-leg chrome steel base with footring.

#BAS-30
\$210.00



More options online!

Pneumatic 5-Leg Lift Stool

Pneumatic gas cylinder easily adjusts height with convenient under-cushion ring. Adjustable height: 19" to 24". 16" x 4" thick seat cushion. 5-leg, die cast aluminum base. 23" base provides excellent stability.

#BPS-20
\$335.00



Pneumatic Lift Stool with Backrest

*BPS-20 with adjustable backrest and D-ring height lever shown

#BPS-22
\$510.00



Chairs and Stools

It's important to have the right seating for your CT Department. We have a wide variety of sturdy functional chairs and stools to choose from. From comfortable console chairs to Universal task stools. From patient chairs to room stools. Some of the top sellers shown here.

More options online!

Patient Chair

With a classic design, sturdy metal frame and comfortable, padded seat and backrest, these premium side chairs are a perfect addition to any CT room or waiting area.

ZOSC-C06
\$333.00 each



Standard Step Stools

All steel 350-lb. capacity. Skid resistant black mat. 9" high stool with 11" x 13 3/4" top; 34" tall with handrail. Handrail is 7/8" dia. chrome-plated tubular steel. Easy assembly.

#BSH-65
\$99.00



Most Popular, Best Selling Stool!

Universal Stool

Self-skinned urethane seat & back (black only). Pneumatic lift adjusts seat from 22" to 32". Height adjustable footring. Chrome footrest is independently height adjustable. 5-star nylon resin reinforced base with dual wheel casters. Swiveling seat measures 17" w x 16.5" d 300 lb weight capacity.

ZBCH-USB
\$345.00



Console Chair

Console Chair intuitively responds to a wide range of body weights and sizes without the need for manual tension or tilt adjustments. Exclusive Poly Flex back slats with contouring mesh support. Mesh back offers breathability for comfortable sitting.

ZOM5-MA03
\$945.00



Pneumatic Lift Stool with Locking Casters

Pneumatic gas cylinder easily adjusts height with convenient under-cushion ring. Adjustable height: 16" to 21". 16" x 3.5" thick seat cushion. 5-leg, chrome base. Reverse casters auto-lock when seated. 23" base provides excellent stability.

#BPS-30
\$385.00



Color options available on PG. 7

Pneumatic Lift Stool with Backrest

#BPS-32
\$355.00

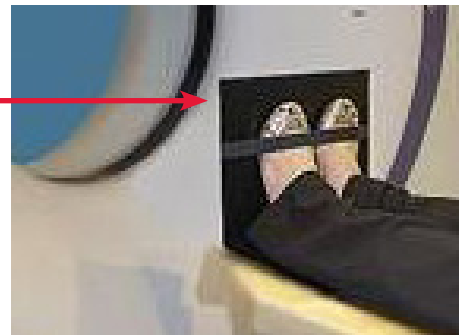


*BPS-30 with adjustable backrest and paddle height lever shown

Foot Immobilizer

Foot Immobilizer. 90 degree foot plate is made of rigid black vinyl plastic that is 1/2" thick. Back of legs rest on the base and feet rest against the upright. 12" x 12" x 12". Hook and loop closure holds feet securely against the upright. Perfect for CT Procedures.

#FIL-12
\$95.00



Tilt-lid Hampers

Lidded hampers provides sanitary environment for soiled linens. Durable, epoxy coated steel lid. Pedal activated lid with lid prop. Chrome plated steel frame. 3" rubber wheel casters.

#BHS-10
\$301.00



Hamper Bags

Drawstring style hamper bag. Designed for use with Hamper BHS-10 (shown to the left). Available in 15 or 45 gallon capacities.

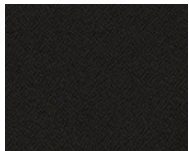
#BAG-18
(15 gallon capacity)
\$50.00

#BAG-25
(45 gallon capacity)
\$59.00

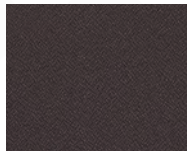


Upholstery Fabric Options for Pneumatic Lift Stools

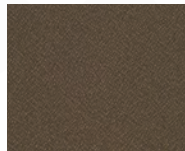
POLYESTER Celestial



1200-Oberon



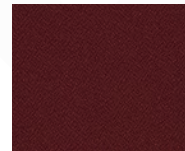
1201-Rhea



1203-Callisto



1204-Titan



1207-Hyperion



1208-Europa

POLYESTER Soft sit



2570-Graphene



2572-Ash



2575-Tsunami



2576-Magma

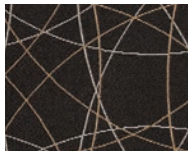


2577-Molten

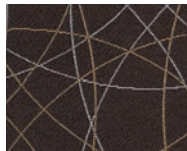


2578-Kipuka

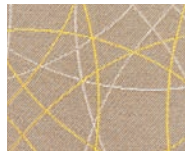
POLYESTER Freedom



3400-Orbit



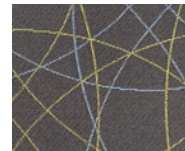
3401-Stealth



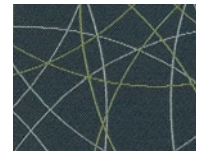
3402-Flight



3403-Cocoa

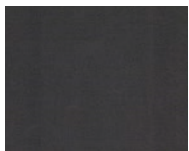


3404-Evening

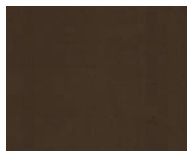


3408-Oasis

VINYL Stage



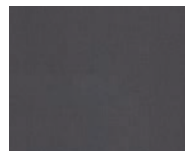
V50-Cats



V53-Grease



V55-Aida



V52-Chicago



V59-Fame



V58-Shrek

Phlebotomy Chairs

Practical and affordable, these blood drawing chairs feature casual comfort for the patient. They provide a minimal footprint and offer comfort without taking up excess space. Built with a powder-coated frame finish, non-marking nylon glides and a minimum 300 lbs. load capacity. Features an adjustable height and depth flip arm that positions in place when in use, the flips out of the way for easy exit. E-Z clean plastic seat for easy cleaning. Our 3 top selling chairs are shown below. We offer an expanded assortment of chairs to fit any need and budget.

More options online!

#PC-6050
\$720.00



Capacity 300 lbs.

Seat
Height (in) / (cm) 18" / 45.72 cm
Dimensions (in) / (cm) 17 1/2" x 18" / 44.45cm x 45.72 cm

Arms
Height Range (in) / (cm) 6" / 15.24 cm

Overall
Depth (in) / (cm) 25" / 63.50 cm
Width (in) / (cm) 28" / 71.12 cm

Color options available on PG. 9

#PC-66010
\$940.00



Capacity 400 lbs.

Seat
Height (in) / (cm) 20" / 50.8 cm
Dimensions (in) / (cm) 17 1/2" x 18" / 44.45cm x 45.72 cm

Arms
Height Range (in) / (cm) 6" / 15.24 cm

Overall
Depth (in) / (cm) 26" / 66 cm
Width (in) / (cm) 32" / 78.74 cm

#66000B
\$1600.00



Capacity 700 lbs.

Seat
Height (in) / (cm) 20" / 50.8 cm
Dimensions (in) / (cm) 35" x 21" / 89cm x 53.34 cm

Arms
Height Range (in) / (cm) 6" / 15.24 cm

Overall
Depth (in) / (cm) 29" / 73.66 cm
Width (in) / (cm) 46" / 116.84 cm

Upholstery Fabric Options For Phlebotomy Chairs

PATRIOT PLUS



PAT-427
Blueridge



PAT-8604
Concrete



PAT-8567
Dove



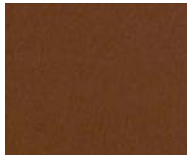
PAT-8602
Oatmeal



PAT-432
Imperial Blue



PAT-8584
Taupe



PAT-8516
Chestnut



PAT-8615
Berry

RENAISSANCE



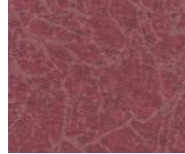
REN-9214
Steel Blue



REN-9201
Cobblestone



REN-9205
Gypsum



REN-9208
Wineberry



REN-9207
Ice Blue

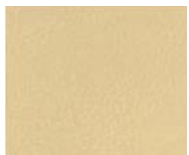


REN-9210
Cypress

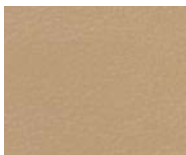


REN-9212
Blue Jade

SAVOY



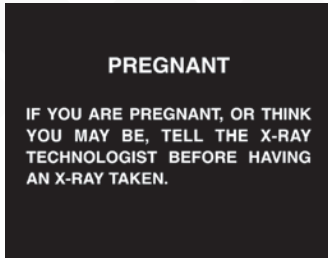
SAV-401
Vintage Gold



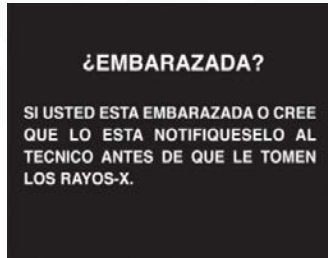
SAV-409
Warm Taupe

Department Signs

All signs are constructed of durable 1/2" Trovicel™, a plastic specific to the sign industry. Double-faced tape is attached to the back for mounting. Large Signs are 8" x 10". Small Signs are 4" x 10".



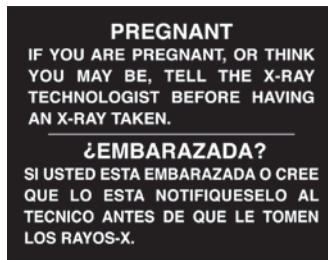
#PS-04EB \$20.00
#PS-04ER \$20.00 (Red)



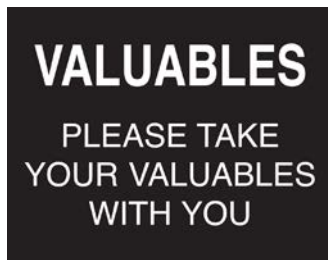
#PS-04SB \$20.00
#PS-04SR \$20.00 (Red)



#NFD-22B \$20.00



#PS-08B \$20.00
#PS-08R \$20.00 (Red)



#VS-10EB \$20.00
#VS-10ER \$20.00 (Red)



#NFD-22R \$20.00

Caution / MRI Signs

Signs give critical information to patients & technologists. Enhances safety with a front line written warning. Many states adopt certain signs as law as part of a good quality assurance program. Check your local laws or program requirements.



#CRA-15 \$20.00



#CRA-16 \$20.00



#CRA-17 \$15.00



#CRA-18 \$15.00

CT Illuminated In Use Sign

Lighted sign focuses attention on room status. Not a plug-in sign. Requires hardwired power connection at 120 VAC. Measures 11 1/2" x 2 1/2" x 7 3/4"



#SLU-CT \$265.00

IV Stands

Features 1" and 7/8" telescoping, chromed plated steel pole with twist lock adjustments. Adjustable heights. Detachable rams-horn hooks

Economy Twist Lock

Adjustable height range: 46" to 83"; Epoxy coated 4-leg 22" diameter base with easy roll ball bearing casters. 30 lb load capacity under normal use.

5-Leg Base Knob Lock

Adjustable height range: 52" to 92". 5-leg, cast aluminum, 23" diameter base with soft roll, dual wheel casters. 45 lb load capacity under normal use. Available in two or four hooks.



Two or four hooks available for 5-Leg base!



ECONOMY TWIST LOCK

2-Hook
#BIV-70
\$75.00



5-LEG BASE KNOB LOCK

2-Hook
#BIV-76
\$235.00

4-Hook
#BIV-77
\$250.00

Mayo Instrument Stands

Provides ready access to equipment or instruments. Leg posts are 1" chrome plated steel. Steel, easy-slide extension posts. Stainless steel tray is 12" x 19" x 3/4" deep.

TABLESIDE
#BMS-80
\$235.00
Ht: 34"-54"



MOBILE
#BMS-95
\$254.00
Ht: 31"-50"



Mayo Instrument Stands

All purpose mobile utility cart. Ideal for linen or accessory items. Features a 300lb capacity. Pre-assembled. Measures: 24"l x 15"w x 32"h

MOBILE
#BCS-73
\$460.00



Radiation Badge Storage

Provides a central location for all badge related activity. Exposure record display area and note clip. Accommodates different styles and sizes of badges. Ring board is also available for Nuclear Medicine and PET.

cat. #	style	badges	board size	price
FB-10N	narrow	10	12" x 5"	\$79.00
FB-20N	narrow	20	12" x 9.25"	\$87.00
FB-40N	narrow	40	12" x 18"	\$135.00
FB-10W	square/hex	10	12" x 9.25"	\$105.00
FB-20W	square/hex	20	12" x 18"	\$135.00
FB-40W*	square/hex	40	12" x 18"	\$199.00
FB-10R	ring(nuc.med.)	10	12" x 5"	\$76.00

Badges available from your local provider

*(The FB-40W comes as two boards, each holding 20 badges.)



HEX



SQUARE



SQUARE



RING



NARROW



WIDE

SQUARE, HEX, WIDE, OBLONG BADGES

1" to 2" wide



#FB-10W



#FB-40W



#FB-20W

RING BADGES



#FB-10R

NARROW BADGES

less than 1" wide



#FB-10N



#FB-20N



#FB-40N

CT Stealth Head/Neck Positioning Sponges

A sampling of the many CT positioning aides that we manufacture.

Dimensions listed as W x L x H

Coated Specialty Sponges



#YCAP
\$176.00
ADULT HEAD IMMOBILIZER
9 x 15.25 x 7

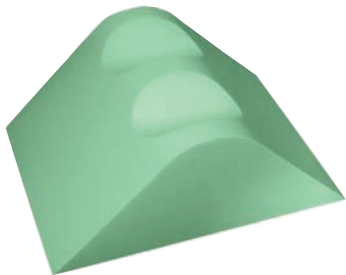


#YCEZ
\$102.00
PHLEBOTOMY WEDGE
5.5 x 25 x 5.5

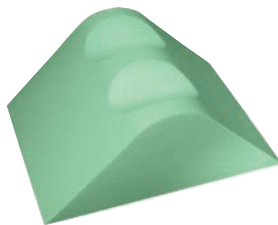


#YCMG
\$218.00
CONTOURED TORSO PAD
18.5 x 17 x 5

Leg Rests Support with Knee Cutout



#YMCP (Large)
(patients > 6' tall)
18 x 24 x 10
\$500.00









#YMCM (Medium)
(patients 5'-6' tall)
12 1/2 x 16 1/4 x 7
\$362.00







#YMCS (Small)
(patients < 5' tall)
14 1/2 x 18 x 4
\$360.00

Stealth Wedge Positioning Sponges

Dimensions listed as W x L x H

	COATED	NON-COATED	
	#YCBC \$65.00	#YFBC \$21.00	45° WEDGE 10 x 13.5 x 7
	#YCBB \$101.00	#YFBB \$26.00	45° WEDGE 10 x 20.25 x 7
	#YCBG \$88.00	#YFBG \$18.00	21° WEDGE 12.25 X 14.25 X 4.5
	#YCBF \$76.00	#YFBF \$23.00	27° WEDGE 12.75 x 15.5 x 6
	#YCFD \$120.00	#YFFD \$37.00	45° SPINAL WEDGE 7 x 21 x 7
	#YCAJ \$315.00	#YFAJ \$109.00	KNEE WEDGE SUPPORT 22 x 20 x 7

Stealth Wedge Positioning Sponges Sets

	COATED	NON-COATED	
	#YCBE \$53.00/set	#YFBE \$14.00/set	34° WEDGE (SET OF 2) 5.5 x 9.75 x 3
	#YCBJ \$90.00/set	#YFBJ \$15.00/set	12° WEDGE (SET OF 2) 10.5 x 9.25 x 2.25
	#YCBH \$95.00/set	#YFBH \$20.00/set	16° WEDGE (SET OF 2) 8.5 x 11 x 3.5
	#YCBI \$119.00/set	#YFBI \$18.00/set	15° WEDGE (SET OF 2) 12.5 x 10 x 3

Coated-Only Specialty Sponge Kit

CT IMAGING KIT 4



CAT #

#YSCT4
\$763.00

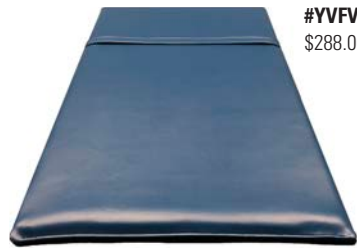
INCLUDED SPONGES

YCAJ - CT Knee Wedge
YCBC - 45° Wedge
YCBF - 27° Wedge
YCBG - 21° Wedge
YCBH - (2) 16° Wedges
YCBJ - (2) 12° Wedges
YCFD - 45° Spinal Wedge

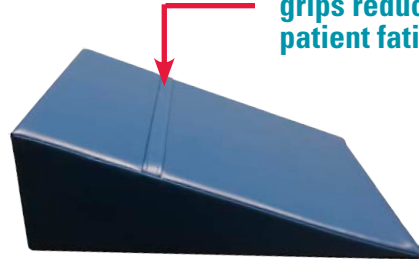
Dimensions
listed as
W x L x H

Body Comfort Wedge Pillow

High density foam enclosed in a durable, heavy gauge, reinforced Royal Blue vinyl covering. Supports patient's head and shoulders when arms must be held above head. Dual hand grips reduce patient fatigue. Measures: 16" x 25" x 8.25"



#YVFB
\$288.00



Easy access
grips reduces
patient fatigue



CT Knee Wedge Positioner

This unique visco-elastic material is specifically formulated to maximize patient comfort. Features a Permanent Antimicrobial Agent with cover seams sown using coated nylon thread to minimize the risk of any biological contamination. Positioner covering is a Breathable Waterproof polymer fabric that is easy to maintain and clean with any standard disinfectant. Positioners are resistant to stains and are Latex Free! Excellent radiolucent qualities.

#MFP-10
\$739.00



Comfort Positioners

Unique visco-elastic material molds to patient's body shape. Conforms to the table platform. Excellent radiolucent qualities. Anti-microbial cover with anti-slip undersurface is easy to clean and maintain.

Dimensions listed as W x L x H



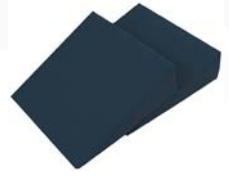
#MFP-07
3" x 7.3" x 2.3" w
\$499.00



#MFP-02
5" x 3" x 1"
\$307.00



#MFP-05
3" x 4" x 2"
\$327.00



#MFP-03
10" x 10" x 3"
\$336.00

Comfort Table Pads

These New Comfort Table Pads are designed to provide the optimal comfort for patients. Perfect for long examinations. Patients often complain about being uncomfortable during exams. A significant part of their discomfort relates to the mattress pads currently available for imaging tables. Current table pads were not developed with the purpose of maximizing patient comfort nor do they utilize the latest technology that is available today. This unique visco-elastic material is specifically formulated to maximize patient comfort in a thin form factor. This heat sensitive material molds to the patient's exact body shape and contours to evenly distribute weight and pressure. Pads feature a Permanent Antimicrobial Agent with cover seams sown using coated nylon thread to minimize the risk of any biological contamination. Pad Covering is a Breathable Waterproof polymer fabric that's easy to clean with a standard disinfectant. Pads are Resistant to stains and are Latex Free and have excellent radiolucent quality. To increase safety, all pads have an anti-slip undersurface to keep the pads in place while patients are getting on/off the table. Available in a variety of sizes. Most common sizes shown below.

CAT#	Measurements	Price
MFP-22	Comfort Table Pad 15" x 13" x 1.250"	\$325.00
MFP-24	Comfort Table Pad 15" x 27" x 1.250"	\$790.00
MFP-32	Comfort Table Pad 29" x 14" x 1.250"	\$420.00
MFP-34	Comfort Table Pad 29" x 28" x 1.250"	\$1,125.00
MFP-46	Comfort Table Pad 31" x 13.5" x 1.250"	\$411.00
MFP-48	Comfort Table Pad 31" x 27.0" x 1.250"	\$955.00
MFP-52	Comfort Table Pad 19.5" x 14" x 1.250"	\$380.00
MFP-54	Comfort Table Pad 19.5" x 28" x 1.250"	\$795.00

#MFP-24
\$790.00



CT Table Slickers

Clear poly film micromatte vinyl protective cover that is designed to fit over CT table pads that come with your table. They are manufactured to resist contamination of the cradle and interior of the imaging table and allows for a quick clean up of blood and bodily fluids and reduces contaminant buildup in hard to clean areas. Flaps prevent contaminants from getting into other hard to clean areas of a table. Such as: table electronics, drives and hinges. These **slickers are designed to fit the original pad precisely**. Latex Free and Easy to install. Comfortable for patients. Will not interfere with normal CT table operation. Slickers utilize a flap system that is integrated with table safety belts to prevent contamination of CT tables.

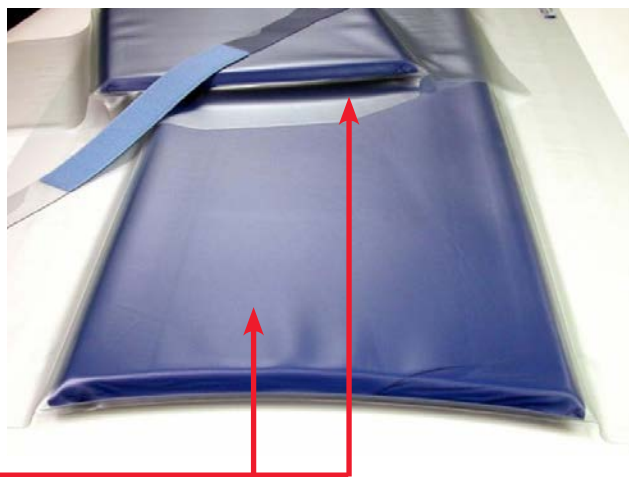
If you are covering a non-original table pad, please provide the pad dimensions before placing your order to make sure the slicker cover will fit your pad properly.

CT Table Cushions

Designed to enhance infection control practices in the CT room. Reduces cleanup times and equipment maintenance. Foam cushion is permanently welded with thermo-sealed seams inside the protective slicker cover, offering contamination resistance of the cradle and interior of the imaging table. The unique flaps prevent contaminants from getting into other hard to clean areas of a table such as threaded surfaces, corners, table joints or cradles, internal electronics, drives and hinges. Cushions are fully enclosed. No need to worry about fitting an existing table pad. Designed to fit the original equipment table specified by machine, these slicker cushions eliminate the fit problem. The most inexpensive way to renew the table pad and cover at once. Allows for a quick clean up of blood and bodily fluids. Reduces contaminant buildup in hard to clean areas. Fluids and contrast are unable to penetrate into the cushion and table. Made of heavy clear micromatte vinyl and top grade foam, fit perfectly to your specific CT table. Easy to install and does not affect normal table usage.

Features

- Improves table sanitation allowing quicker cleanup
- Reduces contaminant build-up in hard to clean areas
- Reduces table maintenance over time
- Increases system uptime and productivity
- Built to fit original equipment pads precisely!
- Available for nearly every make and model!



CT Table Cushions
with CT Table Slickers

TA CAT#	PRICE	SLICKER COVER, SLICKER CUSHION, & ACCESSORY ITEM DESCRIPTION	COMPONENTS	Dimensions (inches)	
				L	W
GE Slicker Table COVERS				L	W
PAD-CT-GE1	\$520	X-ray Angio Slicker Cover for GE Omega IV Tables; fits 3" & 4" thick pad	COV	118"	8"
PAD-CT-GE2	\$520	X-ray Angio/Cardiac Slicker Cover for GE Omega V Tables; fits 3" & 4" thick pad	COV	132"	8"
PAD-CT-GE3	\$520	Angio Slicker - GE Omega IV Tables (118 in.); fits 1" & 2" thick pad	COV V	118"	8"
PAD-CT-GE4	\$520	Angio/Cardiac Slicker - GE Omega V Tables (132 in.); fits 1" & 2" thick pad fits pad E8015JB 1" thick	COV V	132"	8"
PAD-CT-GE5	\$520	CT Slicker w/ Extender - 9800/HiLight Advantage Systems w/ Metal-Free Head Holder	COV E H	78"	16"
PAD-CT-GE6	\$520	CT Slicker w/ Extender - 9800/HiLight Advantage Systems w/o Metal-Free Head Holder	COV E H	75"	16"
PAD-CT-GE7	\$520	CT Slicker - CT/e and CT/e Dual Systems	COV H	82 1/2"	12 1/2"
PAD-CT-GE8	\$520	CT Slicker w/ Extender - BrightSpeed Select & HiSpeed DXi/FXi/LXi/NXi/ZXi Systems	COV E H	86 3/4"	16"
PAD-CT-GE9	\$520	CT Slicker w/ Extender - CT/i & HiSpeed Advantage Systems w/ Metal-Free Head Holder (concave head end)	COV E H	92"	17"
PAD-CT-GE10	\$520	CT Slicker w/ Extender - HiSpeed Advantage Systems w/ Original Head Holder (Square head end)	COV E H	88 1/2"	16"
PAD-CT-GE12	\$520	CT Slicker - ProSpeed Plus Systems	COV G H	79 1/2"	13"
GE Slicker CUSHIONS				L	W
PAD-CT-GE15	\$660	CT Slicker Cushion w/ Extender - Discovery CT750 HD and VCT Systems w/ GT 2000 Table	CSH E H	103"	17"
PAD-CT-GE16	\$645	CT Slicker Cushion w/ Extender - Discovery CT750 HD and VCT Systems w/ GT 1700 Table (Optima 660)	CSH E H	82 3/4"	17"
PAD-CT-GE17	\$180	Extender Slicker Pad for VCT, QXi, and PET	E	15"	17"
PAD-CT-GE18	\$610	CT Slicker Cushion w/ Extender - LightSpeed and BrightSpeed Power Systems	CSH E H	92"	17"
PAD-CT-GE20	\$735	PET/CT Slicker Cushion w/ Extender - PET Discovery VCT and Discovery 600/690 (PET Global Table)	CSH E H	110"	17"
PAD-CT-GE21	\$735	PET/CT Slicker Cushion w/ Extender - PET Discovery ST/LS	CSH E H	105"	17"
PAD-CT-GE24	\$610	GE Infinia Nuclear Med Table Cushion	CSH R	77 1/2"	14"
PAD-CT-GE25	\$610	GE Hawkeye Millinium VG Nuclear Med Table Cushion	CSH R	79 5/8"	14"
PAD-CT-GE26	\$610	GE Ventri Nuclear Med Table Cushion (concave head end) fits GE MPR	CSH E R	64"	16"
PAD-CT-GE34	\$655	GE Slicker Cushion w/ Extender - Revolution CT Systems	CSH E H	85 1/2"	17"
PAD-CT-GE41	\$180	GE slicker cushion head pad for CT Optima head section	CSH E H	15"	17"
GE Accessories				L	W
PAD-CT-GE29	\$105	CT Footswitch Slicker - Discovery CT750 HD & VCT Systems (bell shaped)	FSW V	23 1/2"	28"
PAD-CT-GE27	\$65	CT Footswitch Slicker - HiSpeed and LightSpeed Advantage Systems (square shaped)	FSW V	23"	21"
PAD-CT-GE35	\$70	CT Footswitch Slicker - Revolution CT (NG Table) (rectangle shaped)	FSW V	35"	22"
PAD-CT-GE30	\$70	CT Skirt - HiSpeed Advantage Systems (Set of 2 ea.)	S V	13"	36"
Philips Slicker Table COVERS				L	W
PAD-CT-PH12	\$520	Philips Nuclear NMPT Pallet Pad Slicker	COV	82 1/2"	15"
Philips Slicker Table CUSHIONS				L	W
PAD-CT-PH13	\$610	Philips Stargate? Mx8000 Dual v.EXP CT Slicker Cushion (Gray)	CSH	94 1/2"	18"
PAD-CT-PH1	\$610	Philips Brilliance CT 40 Channel, 16 Power, 16/10/6 Slice Slicker Cushion (Yellow) Scan line @	CSH V	94 1/2"	18"
PAD-CT-PH2	\$610	Philips Stargate L CT Slicker Cushion Scan line @ 43.31" (111 cm.) from head end	CSH V	94 1/2"	18"
PAD-CT-PH3	\$660	Philips CT Slicker Cushion Long (Yellow) Scan line @ 57.6" (146.3 cm.) from head end	CSH V	104"	18"
PAD-CT-PH4	\$660	Philips CT Slicker Cushion Long (Yellow) Scan line @ 55.5" (141.0 cm.) (Inguinity scanner)	CSH V	104"	18"
PAD-CT-PH5	\$660	Philips Brilliance CT 16/10 Slice CT Slicker Cushion (Yellow) w/ Restraining Belts	CSH V R	94 1/2"	18"
PAD-CT-PH7	\$610	Philips Bariatric Slicker Cushion (Yellow) no flaps	CSH	95"	21"
PAD-CT-PH8	\$660	Philips Bariatric Slicker Cushion, Long (Yellow) no flaps	CSH V	105"	19"
PAD-CT-PH9	\$610	Philips Patient Cushion Scan line at 48.58 inches from head end (Yellow)	CSH V	94 1/2"	18"
PAD-CT-PH10	\$610	Philips Patient Cushion Scan line at 47.24 inches fro head end (Yellow)	CSH V	94 1/2"	18"

PAD-CT-PH14	\$610	Philips Patient Cushion for Flat Top	CSH V	95 1/2"	19
PAD-CT-PH15	\$610	Philips Bariatric Slicker Cushion (Grey)	CSH V	105	19
PAD-CT-PH16	\$695	Mattress Pad-Patient Support Extended	CSH V	106	18"
PAD-CT-PH17	\$675	Mattress Pad-Patient Support Bariatric	CSH V	96 1/2"	18"

Philips Restraining Belts

PAD-CT-PH11	\$120	Large Restraining belts for Philips Slicker Cushions (Set of 3 ea.)	R	36 1/2"	5 5/8"
-------------	-------	---	---	---------	--------

Neusoft Slicker Table COVERS

PAD-CT-NU1	\$520	Slicker cover for Philips and Neusoft	COV		
------------	-------	---------------------------------------	-----	--	--

Neusoft Slicker CUSHIONS

PAD-CT-NU2	\$610	Philips and Neusoft CT Slicker Cushion - Grey	CSH		
PAD-CT-NU3	\$610	Philips and Neusoft CT Slicker Cushion - Grey	CSH		
PAD-CT-NU4	\$610	Philips and Neusoft CT Slicker Cushion - Yellow	CSH		
PAD-CT-NU5	\$610	Philips and Neusoft CT Slicker Cushion - Yellow	CSH		

Siemens Table COVERS

PAD-CT-SM9	\$520	Siemens Somatom Plus 4/Volume Zoom/Sensation CT Slicker Set & Definition DS/AS (HST) MPT Table	COV S H	94 1/2"	18"
PAD-CT-SM6	\$520	Siemens Emotion CT Slicker Set	COV H	86"	18"
PAD-CT-SM7	\$520	Siemens Definition CT Slicker Set	COV H	85"	18"
PAD-CT-SM1	\$520	Siemens Axiom Mattress Shape 1, Model 83 85 333, 4 cm. thick, Angio Slicker	COV	107"	8 1/2"
PAD-CT-SM2	\$520	Siemens Axiom Mattress Shape 1, Model 57 71 444, 8 cm. thick, Angio Slicker	COV	107"	8 1/2"
PAD-CT-SM3	\$520	Siemens Axiom Mattress Shape 2, Model 100 47 902, 4 cm. thick, Angio Slicker	COV	106"	21"
PAD-CT-SM4	\$520	Siemens Axiom Mattress Shape 2, Model 57 71 428, 8 cm. thick, Angio Slicker	COV	106"	21"
PAD-CT-SM30	\$520	Siemens Definition Heavy Duty CT Slicker w/Extender	COV E H	85"	18"
PAD-CT-SM31	\$520	Siemens Sensation Heavy Duty CT Slicker w/Extender	COV S E H	94 1/2"	18"
PAD-CT-SM32	\$520	Siemens Flash CT Slicker Set (Extra wide flaps)	COV H	85"	18"

Siemens CT Slicker CUSHIONS

PAD-CT-SM16	\$630	Siemens Somatom Plus 4/ VZ/ Sensation/ Definition DS/AS (HST) MPT CT Slicker Cushion	CSH S H	94 1/2"	18"
PAD-CT-SM17	\$610	Siemens Nuclear Medical Slicker Cushion	CSH	83"	14"
PAD-CT-SM18	\$610	Siemens Emotion Slicker Cushion set	CSH H	85 1/2"	18"
PAD-CT-SM20	\$630	Siemens Definition CT Slicker Cushion	CSH H	85"	18"
PAD-CT-SM21	\$1,035	Siemens Definition Heavy Duty CT Slicker Cushion Set w/Extender (formally CT-SDEF-06A)	COV PAD E H	85"	18"
PAD-CT-SM22	\$1,035	Siemens Sensation Heavy Duty CT Slicker Cushion Set w/Extender	COV PAD S E	94 1/2"	18"

Siemens PADS

PAD-CT-SM23	\$645	Siemens Definition Heavy Duty CT Flat Top Pad w/Extender (PAD0026XR)	PAD E	85 1/2"	18"
PAD-CT-SM24	\$645	Siemens Sensation Heavy Duty CT Flat Top Pad w/Extender (PAD0026XR)	PAD E	94"	14"

Siemens ACCESSORIES

PAD-CT-SM25	\$175	Siemens Sensation Footboard Extension pad	E	14"	17"
PAD-CT-SM26	\$85	Sterile Drape for Siemens Intervention Panel, 10 drapes per box.	D		
PAD-CT-SM27	\$90	Siemens Somatom Plus 4/VZ/Sensation 54" Skirt Set (Set of 2 ea.)	S	54"	13"
PAD-CT-SM28	\$165	Siemens 64" Restraining Belt (Set of 3 ea.)	R	64"	5 3/4"

Toshiba CT Slicker TABLE COVERS				L	W
PAD-CT-TS3	\$520	Toshiba Aquilion CT Slicker (for 81" pad)	COV E H	81"	18"
PAD-CT-TS4	\$520	Toshiba Aquilion CT Slicker (for 70" pad)	COV E H	70"	18"
PAD-CT-TS5	\$520	Toshiba Aquilion CT Slicker Set (for 87" pad)	COV E H	87"	18"
PAD-CT-TS6	\$520	Toshiba Aquilion CT Slicker Set (for 95" pad)	COV E H	95"	18"
PAD-CT-TS7	\$520	Toshiba Asteion CT Slicker (for 75" pad)	COV E H	75"	18"
PAD-CT-TS8	\$520	Toshiba Aquilion One CT Slicker (for 91 1/2" pad)	COV E H	91 1/2"	18"
PAD-CT-TS10	\$520	Slicker Cover for Toshiba Aquilion Prime 96 1/2" Table Pad	COV E H	96 1/2"	19"

Toshiba Accessories				L	W
PAD-CT-TS9	\$85	Toshiba Extender Cover	E	15"	18"
PAD-CT-TS11	\$85	Extender cover assembly for Toshiba Aquilion Prime	E	15"	18"

Miscellaneous				L	W
PAD-CT-CBH	\$30	All OEMs, 41" Black Catheter Bag Hanger Assembly	H	41"	2"

Gantry Guard™

Protection You Need

- Fits most CT scanners
- Held in place by easy-to-remove adhesive tabs
- Disposable for quick and easy cleanup
- Convenient dispenser box
- Dimensions: 296 cm x 206 cm
- Color: Clear
- 25 individually wrapped covers per box
- Adhesive tabs for easy placement

Cat #CT-GCOV
Call for pricing



Radiolucent Immobilizer Strap

Comfortably secures patient positioning and eliminates motion. Helps prevent patient falls without limiting respiration or circulation. Ideal for CT. Available in three widths and five lengths for a variety of patient imaging needs and CT tables. Strap is heavy gauge reinforced vinyl. Fast and easy hook and loop closure. Easy to remove in case of emergency. Fast and easy adjustable hook and loop closure. Easy to clean and disinfect.

Available Colors	cat.#	width x length	price
 Blue (default)	RDH-060	7" x 60"	\$79.00
	RDH-072	7" x 72"	\$89.00
	RDH-084	7" x 84"	\$110.00
 Black	RDH-096	7" x 96"	\$130.00
	RDH-120	7" x 120"	\$169.00
	RDP-060	14" x 60"	\$120.00
 Green	RDP-072	14" x 72"	\$132.00
	RDP-084	14" x 84"	\$152.00
	RDP-096	14" x 96"	\$174.00
 Yellow	RDP-120	14" x 120"	\$220.00
	RDW-060	20" x 60"	\$152.00
 Red	RDW-072	20" x 72"	\$164.00
	RDW-084	20" x 84"	\$184.00
	RDW-096	20" x 96"	\$205.00
 Mint	RDW-120	20" x 120"	\$252.00

BLUE is the default color. Colors are for Immobilizer Straps only. Hook and Loop is black.



Traction Hand-Hold Straps

Straightening the legs easily applies traction. Hook and loop hand-hold straps provide secure grip.



MANUAL #RDT-HN \$104.00

Low
ers
shoulders
for
cervical
imaging.

Traction Hand-Hold Straps

Primarily for elderly or unconscious patients. Rigid foot plate provides stable, steady support.



AUTOMATIC #RDT-SH \$168.00

Extremity Restraint Strapping

6" wide strap is designed for superior stability. Strap extensions then cross over patient where they are secured with "hook" and "loop" closure. Three standard lengths; custom available.



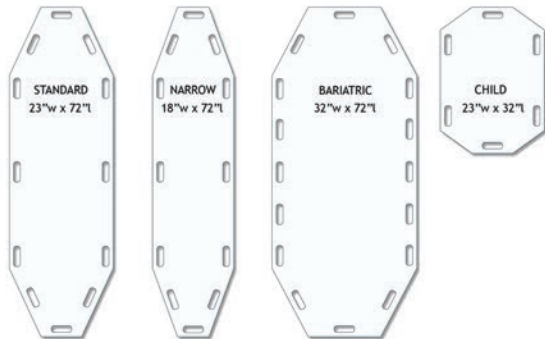
cat.#	width x length	price
RDF-084	6" x 84"	\$54.00
RDF-096	6" x 96"	\$58.00
RDF-120	6" x 120"	\$116.00

Regular Transfer Board

Allows safe and efficient transfer of patients for general imaging, MRI, and CT. Semi rigid slick material makes positioning under the patient easy. Transfer boards are radiolucent and can be used in the imaging field. Conveniently located handgrips allow optimal movement. Boards are made of durable high density polyethylene. Color: White. MR safe. Has a 3/16" thickness. These boards ship at Oversize Rates.

REGULAR BOARDS (white)

cat. #	dimensions	description	price
TBS-2372	23"(w) x 72"(l)	standard	\$198.00
TBN-1872	18"(w) x 72"(l)	narrow	\$193.00
TBB-3272	32"(w) x 72"(l)	bariatric	\$294.00
TBH-2332	23"(w) x 32"(l)	half	\$90.00

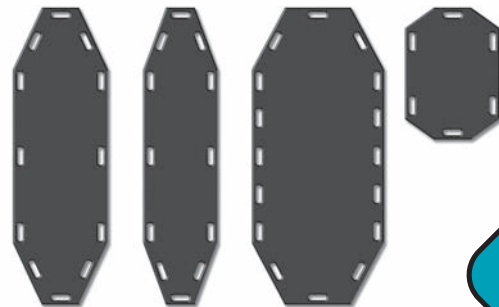


Anti-Static Transfer Board

Anti-static boards are made of UHMW (ultra high molecular weight polyethylene). Transfer boards are radiolucent and can be used in the imaging field. Conveniently located handgrips allow optimal movement. Color: Black. Has a 3/16" thickness. These boards ship at Oversize Rates. MR safe.

ANTI-STATIC BOARDS (black)

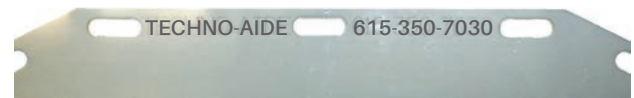
cat. #	dimensions	description	price
TBS-2372AS	23"(w) x 72"(l)	standard	\$588.00
TBN-1872AS	18"(w) x 72"(l)	narrow	\$440.00
TBB-3272AS	32"(w) x 72"(l)	bariatric	\$716.00
TBH-2332AS	23"(w) x 32"(l)	half	\$230.00



Four sizes to choose from!

Engraved Transfer Option

Personalize your transfer boards for your facility. Each board can be engraved with your name, phone number, etc. to make sure your boards come back to YOU! (call for pricing) **#TBS-ENGRAVE**



Restraint Straps

Super strong 2" nylon webbing. Secure snap buckle closure.



cat.#	girth	description	price ea.
TBR-S72	72"	standard/half	\$40.00
TBR-N60	60"	narrow	\$34.00
TBR-B90	90"	bariatric	\$44.00

Lifting Straps

Convenient nylon straps loop through hand holds. Provides better grip. Provides extra length for better reach. Ships @ 1 lb.

#TBS-ST2
\$34.00/pair



Board Wall Rack

Two 6" pegs are angled to keep board from slipping. Mounting holes are on vertical centers. Steel with white enamel. Ships @ 4 lbs.

#TBR-2P
\$72.00



CT Skin Markers

Easily identifiable as a bright white image to properly communicate an area of interest or concern to the radiologist.

BB size
2.3mm



CT Dot: 2.3mm
Lead-free 2.3mm marker. Highlights areas of interest for Radiology and CT. Easy-Peel tab.

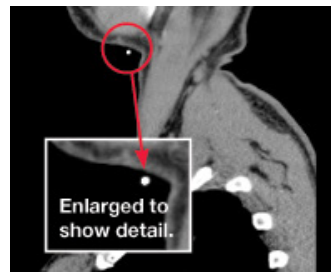
Cat.#
SDM-CT1 \$105.00
1-5 Boxes (50 per box)

BB size
4.0mm



CT Dot: 4.0mm
Lead-free 4.0mm marker. Highlights areas of interest for Radiology and CT. Easy-Peel tab.

Cat.#
SDM-CT2 \$105.00
1-5 Boxes (50 per box)



- **High Quality**-100% Guarantee
- **Identifiable**-Pinpoints the area of concern
- **Artifact Free**-Resulting in reduced retakes
- **No Minimum**-Buy one or many boxes!
- **100% Lead FREE**-Environmentally Friendly
- **100% Latex Free**-Patient Safe

Reference Line Markers

1.5 mm diameter opaque line skin marker perfect for CT field edge markings and nearly all CT marking applications. Used in CT Simulation & Treatment Planning. Flat marker is perforated every 2" yielding 125 markers per box.



cat.# SDW-CT05
\$220.00 (0.5mm)
138 per box



cat.# SDW-CT10
\$220.00 (1mm)
132 per box



cat.# SDW-CT15
\$220.00 (1.5mm)
125 per box

Multi-Modality Skin Markers

Important for image guided surgery providing reference points on a patients scanned images without artifacts or any tissue indent.

Available in 3.5 mm thick & 15mm outer dimension.



CT / MRI
No center hole; appears as bright object on CT and MRI scans. Also highlights areas of interest for radiology and mammography.

cat.# MM3007
1-5 Boxes \$278.00
50 per box



CT / MRI / THERAPY / RADIOLOGY
2mm center hole suitable for conventional hypodermic needle. Highlights area of interest for Oncology and Radiology.

cat.# MM3005
1-5 Boxes \$245.00
50 per box



CT / MRI / NUC Med / PET
2mm center hole suitable for injection of radioisotope. Highlights area for Nuc. Med., PET, CT and MRI.

cat.# MM3003
1-5 Boxes \$333.00
50 per box

Reference Cross Markers

"X" marks the spot. An indicator marker that is great for CT. Cross provides a clear accurate reference point. Good for isocentric markings, field edge markings in CT and three point setups for critical treatment planning.



cat.# SDM-RT03
\$208.00 (2mm)
130 per box

Disinfectants for CT

Facilities should establish and comply with a system to disinfect CT equipment and accessories after each use. Improved adherence to hard hygiene standards has shown to terminate outbreaks in health care facilities. It has also shown to reduce overall infection rates. Protect your patients and employees with these top selling disinfectant wipes.

SANI-CLOTH® AF3 Alcohol-Free Wipes

Contains an excellent range of effectiveness. Cleans, disinfects, deodorizes & fragrance-free. Alcohol content: ALCOHOL-FREE (less than 0.016%). Recommended Contact Time: 3-minutes or less. Commonly used for **CT and most other IMAGING EQUIPMENT**. PLUS daily use items like table pads, sandbags, coated sponges, transfer boards, aprons, shields, vinyl straps... you name it. Meets CDC, OSHA and CMS Tag F441 guidelines.

cat.#	wipe size	quantity	price
GWP-WAF	6" x 6¾"	tub of 160 wipes	\$14.50
GWP-WAFCS	6" x 6¾"	case of 12 tubs	\$173.00



SANI-CLOTH® BLEACH Wipes

Ideal for disinfecting high risk areas endemic with Multidrug-Resistant Organisms, Clostridium difficile spores, Norovirus, MRSA, and 50 other pathogenic microorganisms. Recommended Contact Time: 4-minutes. Compatible with a wide range of surfaces and equipment. Meets CDC, OSHA and CMS Tag F441 guidelines with a 1:10 bleach dilution.

cat.#	wipe size	quantity	price
GWP-B12CS	6" x 10½"	12 tubs of 75 wipes	\$230.00
GWP-BB14CS	7½" x 15"	6 tubs of 65 wipes	\$215.00



EASY SCREEN™ Cleaning Wipes

Touch-Screen cleaner that "works at the speed of technology." Rapidly cleans dirt, grime, fingerprints and smudges from healthcare equipment. Helps prevent cross-contamination with a 70% isopropyl alcohol (IPA) solution. Commonly used for **Touch-Screens, Tablets, Lighting, and most other imaging equipment**. Effectively treats acrylic, polycarbonate, glass, stainless steel, and more.



#GWP-ESW
\$178.00 (12 tubs of 70 wipes)



SANI-HANDS™ Hand Disinfectant Wipes

#1 hand sanitizing wipe in Healthcare! Contains 70% ethyl alcohol and proven to kill 99.99% of germs. Effective against MRSA. Proven to remove dirt and soil better than gels and foams. Clinically proven to moisturize the skin after repeated use. Food code compliant. Safe to use before eating and drinking. 15 second contact time. Significantly more effective than alcohol-based gels.

Cat# GWP-B65CS
\$94.50 case of 6



Flex-Guard (Hook & Loop)

Front Protection apron with flexible stretch criss-cross back and **Hook and Loop** closure on the front. Excellent fit for full day imaging protection by providing less weight on the shoulders and snug fit at the back. Double-fold binding for strength and tear resistance. Free dual pocket to store an attached thyroid collar and a separate pocket for other items. Concealed shoulder pads for extra comfort.

0.5mm Pb Equivalent Protection

cat. #	lead type	petite/ sm/ med	lg / xl	2X / 3X
FVR	Regular	\$238.00	\$280.00	\$319.00
FVL	Light Wt.	\$300.00	\$344.00	\$383.00
FVG	LMG Lead-Free	\$395.00	\$438.00	\$503.00

0.375mm Pb Equivalent Protection

cat. #	lead type	petite/ sm/ med	lg / xl	2X / 3X
FVSR	Regular	\$211.00	\$249.00	\$281.00
FVSL	Light Wt.	\$260.00	\$309.00	\$355.00
FVSG	LMG Lead-Free	\$333.00	\$376.00	\$416.00



See Best-Fit Sizing Chart on PG 30



Flex-Guard (Buckle)

Front Protection apron with flexible stretch criss-cross back and **Buckle** closure on the front. Excellent fit for full day imaging protection by providing less weight on the shoulders and snug fit at the back. Double-fold binding for strength and tear resistance. Free dual pocket to store an attached thyroid collar and a separate pocket for other items. Concealed shoulder pads for extra comfort.

0.5mm Pb Equivalent Protection

cat. #	lead type	petite/ sm/ med	lg / xl	2X / 3X
FBR	Regular	\$238.00	\$280.00	\$319.00
FBL	Light Wt.	\$300.00	\$344.00	\$383.00
FBG	LMG Lead-Free	\$395.00	\$438.00	\$503.00

0.375mm Pb Equivalent Protection

cat. #	lead type	petite/ sm/ med	lg / xl	2X / 3X
FBSR	Regular	\$211.00	\$249.00	\$281.00
FBSL	Light Wt.	\$268.00	\$309.00	\$355.00
FBSG	LMG Lead-Free	\$333.00	\$376.00	\$416.00

NEW Wide Belt Vest Guard Plus

Full front overlap design distributes weight between shoulders and hips and provides full coverage. Provides .5mm Pb equiv protection in the front and .25mm Pb equiv. protection in the back. New inside elastic back guard and front belt assures a snug fit with maximum back support. Double-fold binding offers strength and tear resistance. Hook and Loop closure is fast and easy. Free dual pocket to store an attached thyroid collar and a separate pocket for other items. Concealed shoulder pads for extra comfort. 1" safety buckle at shoulder.

0.5mm Pb Equivalency Protection

cat. #	lead type	petite/ sm/ med	lg / xl	2X / 3X
VPR	Regular	\$260.00	\$290.00	\$315.00
VPL	Light Wt.	\$310.00	\$340.00	\$404.00
VPG	LMG Lead-Free	\$389.00	\$429.00	\$499.00

0.375mm Pb Equivalency Protection

cat. #	lead type	petite/ sm/ med	lg / xl	2X / 3X
VPSR	Regular	\$225.00	\$248.00	\$296.00
VPSL	Light Wt.	\$259.00	\$290.00	\$352.00
VPSG	LMG Lead-Free	\$327.00	\$374.00	\$499.00



See Best-Fit Sizing Chart on PG 30



Vest-Wrap

Less Bulk, Better Fit for Freedom of Movement

Separate Men and Women's styles for best comfort. Distributes weight between shoulders and hips. 0.5mm Pb equivalency protection front, 0.25mm back. **Hook and Loop** closure with flexible back. Generous armholes for EZ-fit. Free dual pocket and shoulder pads. Double-fold binding for strength and tear resistance. Concealed shoulder pads for extra comfort. Free dual pocket to store an attached thyroid collar and a separate pocket for other items.

Vest-Wrap Female 0.5mm Pb Equivalency

cat. #	lead type	petite/ sm/ med	lg / xl	2X / 3X
VGR	Regular	\$215.00	\$263.00	\$307.00
VGL	Light Wt.	\$269.00	\$326.00	\$359.00
VGG	LMG Lead-Free	\$348.00	\$400.00	\$446.00

Vest-Wrap Male 0.5mm Pb Equivalency

cat. #	lead type	petite/ sm/ med	lg / xl	2X / 3X
VBR	Regular	\$215.00	\$263.00	\$307.00
VBL	Light Wt.	\$269.00	\$326.00	\$359.00
VBG	LMG Lead-Free	\$348.00	\$400.00	\$446.00

Vest-Guard Male

Full front overlap design saves weight. Distributes weight between shoulders and hips. 0.5mm Pb equivalency protection front, 0.25mm back. **Hook and Loop** closure is fast and easy. Free dual pocket and shoulder pads. Double-fold binding for strength and tear resistance. Concealed shoulder pads for extra comfort. Free dual pocket to store an attached thyroid collar and a separate pocket for other items.

0.5mm

cat. #	lead type	petite/ sm/ med	lg / xl	2X / 3X
VMR	Regular	\$210.00	\$250.00	\$299.00
VML	Light Wt.	\$270.00	\$300.00	\$364.00
VMG	LMG Lead-Free	\$349.00	\$366.00	\$440.00

0.375mm

cat. #	lead type	petite/ sm/ med	lg / xl	2X / 3X
VPSR	Regular	\$192.00	\$216.00	\$263.00
VPSL	Light Wt.	\$226.00	\$257.00	\$320.00
VPSG	LMG Lead-Free	\$268.00	\$295.00	\$363.00



Vests do not include the two 1" safety buckles as shown. If you would like these as a FREE Add-On, please specify at the time of ordering.



Vests do not include the two 1" safety buckles as shown. If you would like these as a FREE Add-On, please specify at the time of ordering.

Vest-Guard Female

Full front overlap design saves weight. Distributes weight between shoulders and hips. 0.5mm Pb equivalency protection front, 0.25mm back. **Hook and Loop** closure is fast and easy. Free dual pocket and shoulder pads. Double-fold binding for strength and tear resistance. Concealed shoulder pads for extra comfort. Free dual pocket to store an attached thyroid collar and a separate pocket for other items.

0.5mm

cat. #	lead type	petite/ sm/ med	lg / xl	2X / 3X
VFR	Regular	\$210.00	\$250.00	\$299.00
VFL	Light Wt.	\$270.00	\$300.00	\$364.00
VFG	LMG Lead-Free	\$349.00	\$366.00	\$440.00

0.375mm

cat. #	lead type	petite/ sm/ med	lg / xl	2X / 3X
VFSR	Regular	\$192.00	\$216.00	\$263.00
VFSL	Light Wt.	\$226.00	\$257.00	\$320.00
VFSG	LMG Lead-Free	\$268.00	\$295.00	\$363.00

Breast-Guard

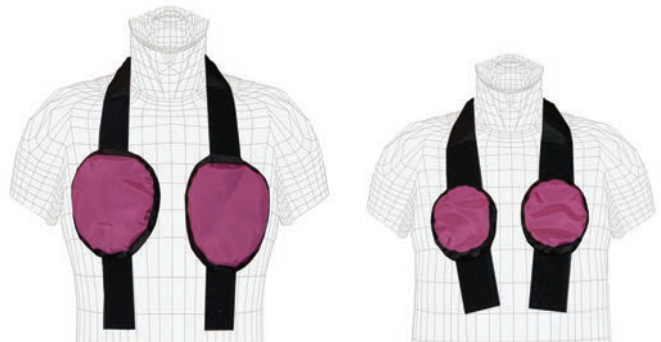
Female Breast Protection

Allows full viewing of anatomy EXCEPT sensitive breast tissue. Hook and Loop strap drapes around the neck. Adjust shields anywhere along the strap. 0.5mm Pb equiv. protection. Sets are two shields plus one strap

Two convenient sizes:

Adult: 6" wide x 7" high; Child: 4" wide x 4 1/2" high.

cat. #	lead type	price/set	size
BSR	Regular	\$44.00	A (Adult)
BSL	Light Wt.	\$54.00	C (Child)
BSG	LMG Lead-Free	\$64.00	



Semi-Guard

Extra Coverage Half Apronette

Convenient hook & loop closure. 0.5mm Pb equivalency protection. Excellent protection for patient and staff.



Default apronette color is Sapphire Blue, unless specified.

size	(width x length)
S	(12" x 12")
M	(18" x 16")
L	(24" x 20")
X	(24" x 24")
2X	(36" x 24")
Half	(24" x 12")
Kids*	(8" x 10")

*See Kids Lap-Guard p.16

Lap-Guard

Buckle Closure Half Apronette

Unbeatable protection for patient and staff. Easy-to-use 1" buckle belt closure. 0.5mm Pb equivalency protection.



Semi-Guard & Lap-Guard

SEMI cat. #	LAP cat. #	lead type	small	med/half	large	x-large	2X
SGR	LGR	Regular	\$90.00	\$100.00	\$110.00	\$130.00	\$160.00
SGL	LGL	Light Wt.	\$110.00	\$120.00	\$130.00	\$150.00	\$190.00
SGG	LGG	LMG Lead-Free	\$160.00	\$180.00	\$200.00	\$220.00	\$270.00

Semi-Guard Set & Lap-Guard Set

SEMI cat. #	LAP cat. #	lead type	price/set
STR	LTR	Regular	\$444.00
STL	LTL	Light Wt.	\$514.00
STG	LTG	LMG Lead-Free	\$744.00



Semi-Guard & Lap-Guard SETS include a 2-Peg Rack and the following apronettes:

small (yellow)	large (royal blue)
medium (berry)	extra-large (green)

Thyro-Guards

Don't forget to add an attached Standard Thyroid Collar. No binding means extra comfort, flexibility and lighter weight.



Standard

Binding all around means affordable comfort and flexibility.

cat. #	lead type	0.5	0.375
TYR	Regular	\$44.00	\$34.00
TYL	Light Wt.	\$54.00	\$39.00
TYG	LMG Lead-Free	\$64.00	\$48.00

Attached Standard

cat. #	lead type	0.5	0.375
TAR	Regular	\$54.00	\$36.00
TAL	Light Wt.	\$64.00	\$41.00
TAG	LMG Lead-Free	\$74.00	\$49.00

No Binding

No binding means extra comfort, flexibility and lighter weight.

cat. #	lead type	0.5	0.375
TNR	Regular	\$74.00	\$53.00
TNL	Light Wt.	\$84.00	\$57.00
TNG	LMG Lead-Free	\$94.00	\$66.00

Attached No Binding

cat. #	lead type	0.5	0.375
TCR	Regular	\$84.00	\$63.00
TCL	Light Wt.	\$94.00	\$67.00
TCG	LMG Lead-Free	\$104.00	\$76.00

No Binding shown



Kilt-Guard Male

All Day Comfort for the Lower Body

Designed for best comfort.. Weight is distributed evenly around hips. Wrap around protection: .5mm Pb Eq front, .25mm back.

Hook and Loop closure with 2" safety buckle. Free pocket and waist pad. Double-fold binding for strength and tear resistance.

cat. #	lead type	petite/ sm/ med	lg / xl	2X / 3X
KMR	Regular	\$210.00	\$236.00	\$255.00
KML	Light Wt.	\$270.00	\$293.00	\$319.00
KMG	LMG Lead-Free	\$340.00	\$368.00	\$395.00



Best-Fit
Sizing Chart
on PG 30

Skirt Guard

All Day Comfort for the Lower Body

Designed for best comfort.. Weight is distributed evenly around hips. Wrap around protection: .5mm Pb Eq front, .25mm back. **Hook and Loop** closure with 2" safety buckle. Free pocket and waist pad. Double-fold binding for strength and tear resistance.

cat. #	lead type	petite/ sm/ med	lg / xl	2X / 3X
SFR	Regular	\$210.00	\$236.00	\$255.00
SFL	Light Wt.	\$270.00	\$293.00	\$319.00
SFG	LMG Lead-Free	\$340.00	\$368.00	\$395.00



Features an easy to use, 2" safety buckle!

Matching the Apron to You

Techno-Aide Sizing Charts are based on averages. But let's face it... nobody is average! So, in order to get the Best Fit for You, please consider the following when measuring yourself for either a Standard or a Custom garment:

PROTECTION IS PRIMARY: Why are you wearing an apron? Protection from radiation! Some companies promise lighter weight garments, but their garments just don't measure up to proper specs. At Techno-Aide, we're much more concerned about your health and safety. Comfort is important, and while our garments are comfortable, comfort will always take a back seat to protection. Isn't that why you're purchasing Protective Apparel?

CIRCUMFERENCE CONSIDERATIONS: When measuring for a Front Protection Apron, measure from one side of the widest part of your body, around to the other side - the actual distance you want protected. Then, tell us if that measurement is your chest, tummy, or hips.

HEIGHT CONSIDERATIONS: In relation to your circumference, do you have a long or short torso? We want to make sure that you are adequately protected!

Best-Fit Sizing Charts

Front Protection Apron

Size	Front Width	Length	Chest Circumference
Petite	20"	32"	< 36"
Small	21"	34"	< 40"
Medium	22"	36"	< 44"
Large	24"	38"	< 48"
X-Large	26"	40"	< 52"
2X	28"	40"	< 56"
3X*	30"	40"	< 60"

Skirt / Kilt

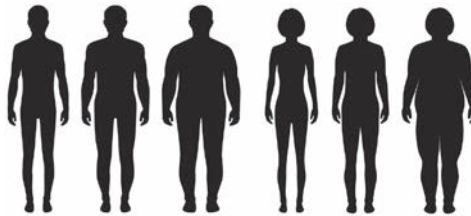
size	waist	hip	length
Petite	25"-27"	32"-34"	19"
Small	28"-29"	35"-36"	19"
Medium	30"-33"	37"-40"	20"
Large	34"-37"	41"-44"	21"
X-Large	38"-41"	45"-48"	22"
2X	42"-45"	49"-52"	22"
3X	46"-50"	53"-57"	22"

Vest (male) & Full Wrap Around

Size	Chest/Tummy	Vest Length	Full Wrap Length
Petite	35"-36"	19.5"	32"
Small	37"-38"	20"	34"
Medium	39"-41"	21"	36"
Large	42"-44"	22"	38"
X-Large	45"-49"	23"	40"
2X	50"-54"	24"	40"
3X*	55"-59"	24"	40"

Vest (female)

Size	Bust	Waist	Hip	Length
Petite	33"-34"	< 31"	35"-36"	19"
Small	35"-36"	< 33"	37"-38"	19.5"
Medium	37"-38"	< 35"	39"-40"	20"
Large	39"-41"	< 39"	41"-43"	21"
X-Large	42"-44"	< 41"	44"-46"	22"
2X	45"-49"	< 46"	47"-51"	23"
3X*	50"-54"	< 51"	52"-56"	23"



Sizes shown for apparel other than Front Protection are actual body measurements. All lengths are from the sternal notch or waist downward, depending on the garment.

Custom Sized Apparel

All custom sized apparel will include an additional fee for each item ordered. Please use the provided CAT numbers and pricing if you need a custom apparel item. Custom sized apparel is non-refundable.

- ACP** - \$125 fee for custom Aprons, Vests & Skirts
- ACP2** - \$45 fee for other custom apparel items (ex: thyroid guards, gonadal guards)

*3X is the maximum size for standard (listed) pricing. All sizes exceeding 3X will be considered custom products. Additional fees apply.

NEW ANTI-MICROBIAL FABRIC

Inhibits the growth of bacteria and other microorganisms on the fabric surface

Color options for all protective apparel!



61-Sapphire

NEW DEFAULT FABRIC 61-Sapphire



N911-Stratos



N921-Ocean



N933-Midnight



64-Onyx



65-Amethyst

NATURA Smooth, Soft, Flexible with a Natural Feel



N911-Stratos



N921-Ocean



N933-Midnight

DIAMOND RIPSTOP FABRIC Medium Weight Nylon, Filament Reinforced Fabric



61-Sapphire



62-Ruby



63-Emerald



64-Onyx



65-Amethyst

FEATHER RIPSTOP FABRIC Light Weight Nylon, Filament Reinforced Fabric



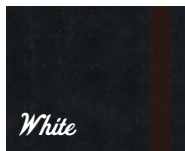
R701-Royal Blue



R702-Red



R703-Forest



R704-Black



R705-Chocolate



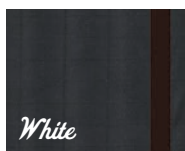
R706-Navy



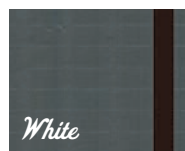
R707-Burgundy



R708-Kelly



R709-Charcoal



R710-Gray

NYLON SOLIDS Liquid Repellent, Light & Supple



11-Royal Blue



12-Navy



20-Green



21-Teal



22-Forest



23-Slate



31-Lt Gray



33-Black



41-Sunshine



42-Tan



43-Orange



51-Red



52-Hot Pink



53-Purple



54-Berry



55-Burgundy



56-Brown

COLORFUL PRINTS Liquid Repellent, Medium Weight



NEW 69-Skulls



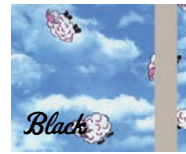
70-Blue Plaid



71-Leopard



72-Lots•O•Dots



73-Sleepy Sheep



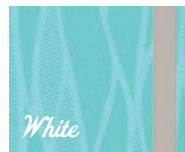
74-Playful Pups



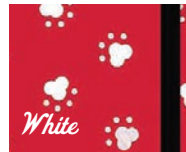
76-Blue Paws



77-Life Vines



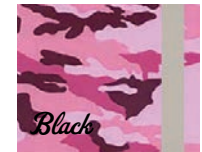
78-Waterfall



80-Red Paws



81-Black Paws



82-Pink Camo



83-Cool Waves



85-Digital Camo



86-Camo Night



Liquid Proof Polyurethane Laminate Fabrics



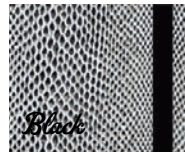
94-Big Dipper



95-Andromeda

DISCONTINUED

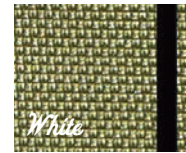
Textured High Tech Fabrics



15-Diamondback



16-Crocogator



17-Eco Tech



18-Bronze Tech

Omni-Guard

Protective Flexible Shield

Used over a patient or equipment, protects from radiation exposure. Used underneath a patient, prevents scatter radiation. All purpose covering for patients or equipment. 0.5mm Pb equivalency protection. Choose any color fabric.

CUSTOM SIZES AVAILABLE!

Size	(Width x Length)
S	(18" x 18")
M	(24" x 24")
L	(24" x 36")
X	(24" x 48")



0.5mm Pb Equivalency

cat. #	lead type	small	medium	large	x-large
OMR	Regular	\$124.00	\$144.00	\$184.00	\$214.00
OML	Light Wt.	\$154.00	\$203.00	\$284.00	\$351.00
OMG	LMG Lead-Free	\$214.00	\$264.00	\$324.00	\$468.00

0.375mm Pb Equivalency

cat. #	lead type	small	medium	large	x-large
OMSR	Regular	\$94.00	\$124.00	\$154.00	\$184.00
OMSL	Light Wt.	\$144.00	\$184.00	\$224.00	\$274.00
OMSG	LMG Lead-Free	\$204.00	\$254.00	\$304.00	\$450.00

NEW ADD GROMMETS: if you would like to hang your Omni-Guard as a curtain, you can add grommets at the time of ordering. Let us know your desired location and the distance between grommets. Maximum width: 48". State on your Omni-Guard order: **Cat.#OM-GR** at \$25.00 for up to five (5) grommets.



Finger-Guard

Radiation reducing Finger-Guard offers extra sterile hand protection from secondary radiation. Available in three, lead-free options: PLF, PFC and PRL.

PLF

Superior tactile sensitivity with excellent attenuation.



Lead-free/Powder-free/Latex-free

PFC

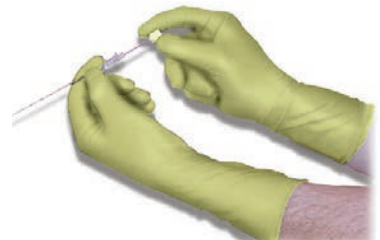
Excellent tactile sensitivity with good attenuation



Lead-free/Latex-free

PRL

Reasonable tactile sensitivity with the best attenuation



Lead-free/Powder-free/
Contains Natural Latex/ Beaded cuff/
Textured finger tips

cat. #	description	sizes	qty/pkg	price
PLF	.18mm Glove	6.5, 7, 7.5, 8, 8.5, 9	5 Pair	\$375.00
PFC	.23mm Glove	6.5, 7, 7.5, 8, 8.5, 9	5 Pair	\$375.00
PRL	.35mm Glove	6.5, 7, 7.5, 8, 8.5, 9	5 Pair	\$255.00

Attenuation for Finger-Guard - Broad Beam

Description	Cat.#	60 KvP	80 KvP	100 KvP	120 KvP
.18mm Glove	PLF	56.5%	47.1%	41.6%	37.7%
.23mm Glove	PFC	48.0%	40.0%	32.0%	28.0%
.35mm Glove	PRL	60.0%	53.0%	46.0%	41.0%

("mm" is actual thickness of glove in millimeters, NOT lead equivalency.)
(Test results in accordance with ASTM Test Method F2547-06.)

Power-Guard

Colortone accents increase comfort.

Large lens area for excellent coverage. Soft colored endpiece for comfort and fit. Padded bridge, temples, and endpiece. Available in most prescriptions. Includes premium case.

Lead Equiv.: 0.75mm lens.	Model#	Color	Prescription Options
Weight: 64 grams.	LER-PBPL	Blue/Orange	Single Vision \$365.00
Frame: Impact resistant polycarbonate.	LER-PSPL	Silver/Pink	Bifocal \$465.00
	LER-PKPL	Black/Gray	
	Plano Lens	\$275.00	



Sure-Guard

Stylish design for medium faces.

Large lens area for excellent coverage. Regular hinges with wrap around frame. Rubber, ultra-soft, fixed nose piece. Available in almost all prescriptions. Includes premium case.

Lead Equiv.: 0.75mm lens.	Model#	Color	Prescription Options
Weight: 63 grams.	LER-6SPL	Silver	Single Vision \$365.00
Frame: TR-90 Nylon. (Prescription Lens available)	LER-6KPL	Black	Bifocal \$465.00
	LER-6RPL	Red	
	LER-6BPL	Blue	
	Plano Lens	\$275.00	



Astro-Guard

Side Shield protection.

Attractive and sturdy women's frames. Flexible temples fit almost any face. Excellent visibility. Available in most prescriptions. Includes premium case.

Lead Equiv.: 0.75mm front and sides.	Model#	Color	Prescription Options
Weight: 66 grams.	LES-AFYKL	Blue/Yellow	Single Vision \$365.00
	LES-AFPW	Purple/White	Bifocal \$465.00
	LES-AFGP	Gray/Pink	
	LES-AFOP	Black/Orange	
Frame: Impact resistant plastic.	Plano Lens	\$250.00	



Cover-Guard

Comfortable protection over regular glasses.

Excellent front and side visibility. Provides limited splash protection. Can be worn over prescription eyewear. Regular hinges with molded nose piece. Includes 0.75mm Pb glass side shields. Includes premium case.

Lead Equiv.: 0.75mm front and sides.	Model#	Color
Weight: 85 grams.	LES-CKPL	Black
	LES-CWPL	White
	LES-CTPL	Tortoise
	Plano Lens	\$175.00
Frame: Black rubberized nylon.		



Mobile Apron Z-Rack

Z-Base mobile rack nests with others when not in use. Heavy duty casters on 12G steel base. Chromed-steel posts and hang bar. 60" long x 60" tall bar allows hanging without creasing. Ships @ 35 lbs.

Rack ONLY
#ARM-ZNH
\$280.00

OR

Rack with
Ten Hangers
#ARM-Z10
\$590.00



NEW Mobile Apron Z-Rack Middle Bar Add-On

Middle Bar addition to hang vests and skirts! 63" bar will hold up to 150 lbs. (Mobile apron z-rack sold separately)

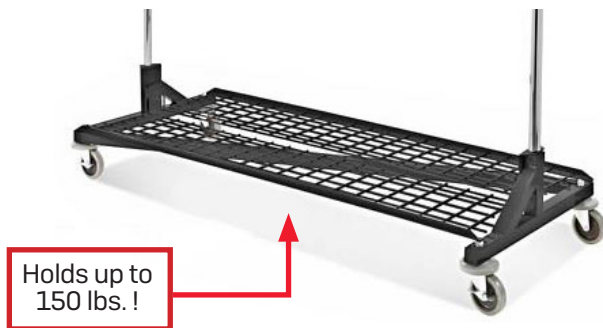
Bar Add-on
#ARM-BAR
\$58.00



NEW Mobile Apron Z-Rack Storage Base Add-On

Bottom shelf add-on for storing misc. protective accessories! 62" shelf will hold up to 150 lbs. (Mobile apron z-rack sold separately)

Shelf Add-on
#ARM-BASE
\$195.00



Apron Hangers

Designed for standard aprons, panoramic, vests, skirts, etc. Top hook swivels for easy hanging. 21" long chromed-steel with anti-slip tips. Glove holders mounted onto back panel. Use on ARM-ZNH rack, peg rack, etc. Single ships @ 2 lbs.

Single Hanger
#ARH-01
\$29.00



Set of 10 Hangers
#ARH-10
\$286.00



Mobile Apron Rack

Ten (10) swing-arm mobile garment stand. Durable all-steel construction. 24" x 24" H-Base for stability and easy cleaning. E-Z-Roll swivel locking casters. Convenient handle for easy mobility. White enamel finish. Overall height is 55". Some assembly required. Ships @ 110 lb.

Easy-Clean
H-Base!

Standard Mobile Rack

#ARM-100
\$1165.00



E-Z Roll, 3" medical grade, swivel, locking casters!

Standard WITH Glove Rack

#ARM-G60
\$1240.00



Arms swing inward to conserve space!



(Aprons sold separately)

NEW 5 Arm Apron Rack

Five (5) swing-arm mobile garment stand. Durable all-steel construction with white enamel finish. 20" x 20" H-Base for stability and easy cleaning. E-Z roll swivel locking casters. Convenient handle for easy mobility. Arms extend to 29.5" outward. We offer the ability to choose whether you need right or left swing arms. Ships @ 80 lbs. motor freight.

#ARM-105
\$880.00



You choose the right or left side!



Arms swing inward to conserve space!



(Aprons sold separately)

E-Z Roll, 3" medical grade, swivel, locking casters!

NEW Multi-Tubular Apron Rack

The perfect solution safe apron storage. Durable all-steel construction. A 24" deep by 32" wide H-base offers stability and easy cleaning. Features E-Z Roll, 3" medical grade swivel locking casters. Convenient handle for easy mobility from room to room. White baked enamel finish. Overall height is 49" and width is 32". Rods are 27" long and spaced 4" apart for easy clearance and storage. Stores up to 5 aprons in tight spaces without crinkling or damaging aprons.

AVAILABLE IN MORE ENAMEL COLORS!

#ARM-500
\$950



E-Z Roll, 3" medical grade, swivel, locking casters!



Convenient handle for easy mobility and storage!

Easy-Clean H-Base!



Holds up to 5 Aprons at once!

(Aprons sold separately)

Wall Mounted Apron Racks

Ten or five swing-arm wall-mount apron racks. Mounting holes on 16" centers. All-steel durability with white enamel finish.



10-Arm #ARW-10 \$436.00



5-Arm, Swing Right #ARW-R5 \$260.00



5-Arm, Swing Left #ARW-L5 \$260.00

Glove Adapter

Retrofits to Mobile Rack. Holds six (6) 18" gloves.

#ARG-06
\$103.00



Apron/Glove Racks

Designed for one apron, but will hold more. All steel, heavy duty construction and a white finish. 16" & 24" holes match most wall studs. Glove holders mounted onto back panel. 28.5" long x 1.75" diameter bar prevents creasing.

WITHOUT GLOVE HOLDERS

#AGR-105
\$178.00



WITH TWO GLOVE HOLDERS

#AGR-110
\$238.00



WITH FOUR GLOVE HOLDERS

#AGR-115
\$258.00



Apron Peg Racks

Help extend the life of your aprons. Our apron racks are just the thing for you! 6" angled pegs keep garments from slipping. All-steel white enamel finish.

Custom Peg Racks May Be Available

2-Peg
(for 1 apron)
#ARP-02
\$72.00



4-peg
(for 2 aprons)
#ARP-04
\$124.00



6-peg and 8-peg racks: mounting holes on 16" and 24" centers.

6-peg
(for 3 aprons)
#ARP-06
\$145.00



8-peg
(for 4 aprons)
#ARP-08
\$156.00



16-peg
(for 8 aprons)
#ARP-16
\$398.00



20-peg
(for 10 aprons)
#ARP-20
\$461.00

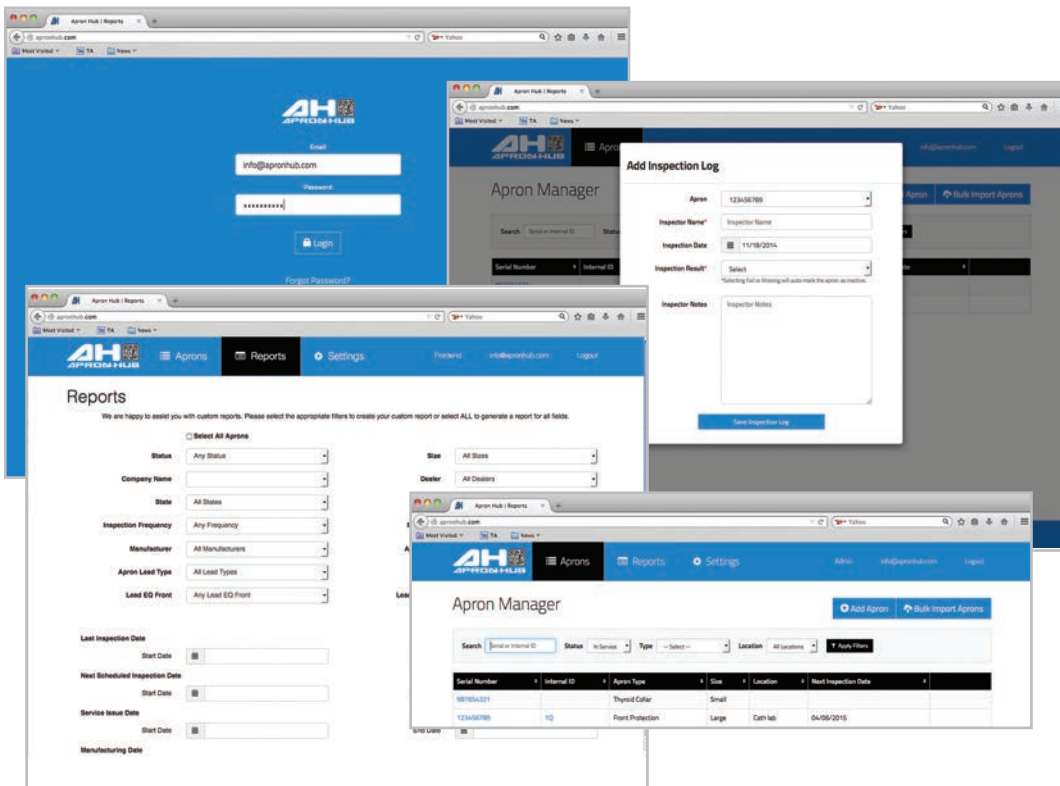




FREE Protective Apparel Tracking and Inventory System!

Exclusive from Techno-Aide!

All new Techno-Aide garments include a scanable QR code for automatic tracking. Upload garment data into your unique ApronHub portal for permanent inventory management. Receive alerts for inspection dates through a customizable format. Retrofit QR code tags onto your existing Techno-Aide or non-Techno-Aide garments. Track inspection history, location, user, etc., through a customizable reports menu. 2D Scanners are available through Techno-Aide or you can use your own 2D-scanner. ApronHub has everything you need to quickly and easily meet the highest QA standards. For more information visit www.apronhub.com today!





Accessories

Tools for Scanning and Labeling Protective Apparel

Stay one step ahead of the inspectors and enhance your QA! All new garments manufactured by Techno-Aide include a scannable QR Code Serial Number label for automated or manual tracking. However, we realize that you may have older, unlabeled garments or garments from another manufacturer. To update all your protective garments, we have designed this retrofit labeling kit so that your garments can be tracked utilizing the most up-to-date tracking technology available.

CAT #	Description	Price
AHSCB	2D Scanner with Cable	call
AHSXW	2D Scanner Wireless	call
AHETL	Eyelet Tool	call
AHES50	Silver Eyelets (50)	\$25.00
AHQRC	QR Code Retrofit Labels (100)	\$68.00
AHDT18	Date Tags: 2018 (50)	\$ 14.00
AHDT19	Date Tags: 2019 (50)	\$ 14.00

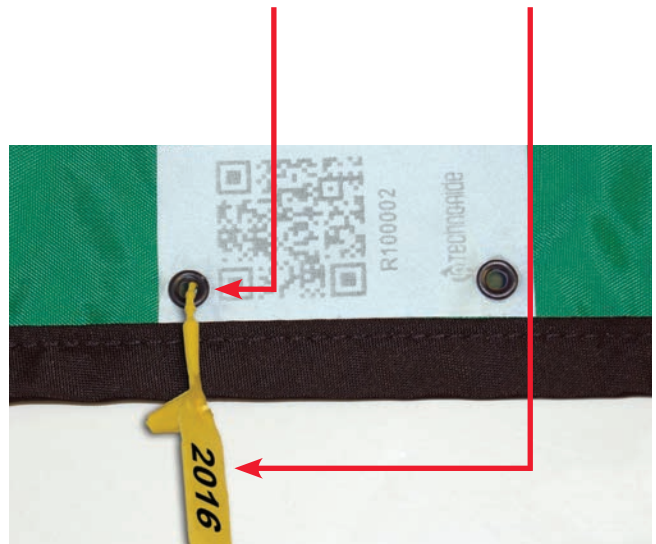
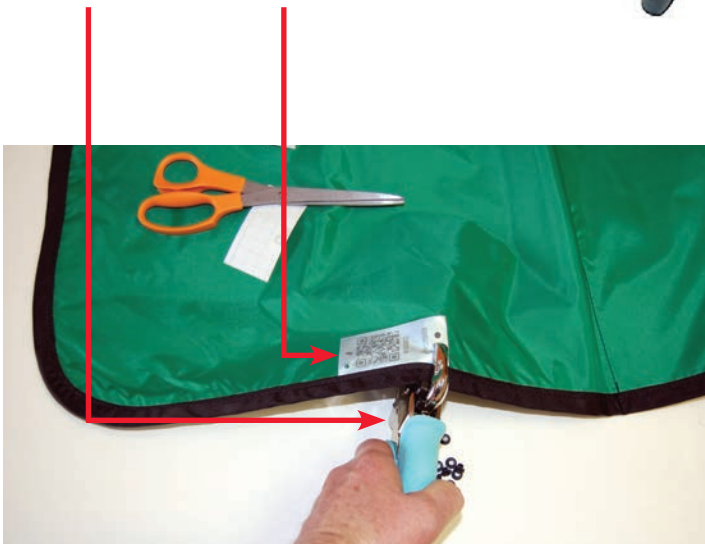
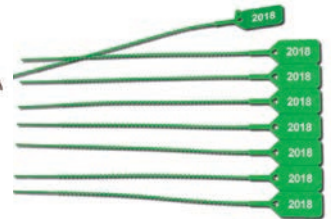
#AHETL
call for pricing

#AHQRC
\$68.00

#AHSCB/AHSXW
call for pricing

#AHES50
\$25.00

#AHDT18/AHDT19
\$14.00





ADMINISTRATION/MANUFACTURING

7117 Centennial Blvd. Nashville, TN 37209

Orders can be placed online or sent to orders@techno-aide.com

For official Quotes: quotes@techno-aide.com

Any questions can be directed to customerservice@techno-aide.com

P: 800.251.2629 or 615.350.7030

F: 800.554.6275 or 615.350.7879

techno-aide.com