



Chiropractic

2019
PRODUCT
GUIDE

EZ-Guard (Hook & Loop)

EZ-On / EZ-Off. Our Most Popular Front Protection apron with an easy criss-cross back and **Hook and Loop** closure on the front. Perfect for every day imaging protection. Double-fold binding for strength and tear resistance. Concealed shoulder pads for extra comfort. Free dual pocket to store an attached thyroid collar and a separate pocket for other items.

0.5mm Pb Equivalent Protection

cat. #	lead type	petite/ sm/ med	lg / xl	2X / 3X
EVR	Regular	\$229.00	\$250.00	\$289.00
EVL	Light Wt.	\$289.00	\$314.00	\$368.00
EVG	LMG Lead-Free	\$374.00	\$435.00	\$474.00

0.375mm Pb Equivalent Protection

cat. #	lead type	petite/ sm/ med	lg / xl	2X / 3X
EVSR	Regular	\$203.00	\$219.00	\$251.00
EVSL	Light Wt.	\$225.00	\$279.00	\$325.00
EVSG	LMG Lead-Free	\$310.00	\$384.00	\$453.00



Our Most Popular Apron!



Buckle

EZ-Guard (Buckle)

EZ-On / EZ-Off. Our Most Popular Front Protection apron with an easy criss-cross back and **Buckle** closure on the front. Perfect for those who prefer a quick adjustable closure. Double-fold binding for strength and tear resistance. Concealed shoulder pads for extra comfort. Free dual pocket to store an attached thyroid collar and a separate pocket for other items.

0.5mm Pb Equivalent Protection

cat. #	lead type	petite/ sm/ med	lg / xl	2X / 3X
EBR	Regular	\$229.00	\$250.00	\$289.00
EBL	Light Wt.	\$289.00	\$314.00	\$368.00
EBG	LMG Lead-Free	\$374.00	\$399.00	\$474.00

0.375mm Pb Equivalent Protection

cat. #	lead type	petite/ sm/ med	lg / xl	2X / 3X
EBSR	Regular	\$203.00	\$219.00	\$251.00
EBSL	Light Wt.	\$225.00	\$279.00	\$325.00
EBSG	LMG Lead-Free	\$310.00	\$384.00	\$453.00

NEW Tie-Guard Apron

Excellent protection and value prices. Comes with a 1" buckle closure that is long enough to tie. 0.5mm Pb equivalency protection. Double fold binding for strength and tear resistance. **Free dual pocket** to store an attached thyroid collar and a separate pocket for other items. Concealed shoulder pads or extra comfort.

0.5mm Pb Equivalency Protection

cat. #	lead type	petite/ sm/ med	lg / xl	2X / 3X
EPR	Regular	\$229.00	\$250.00	\$289.00
EPL	Light Wt.	\$289.00	\$314.00	\$368.00
EPG	LMG Lead-Free	\$384.00	\$405.00	\$474.00

0.375mm Pb Equivalency Protection

cat. #	lead type	petite/ sm/ med	lg / xl	2X / 3X
EPSR	Regular	\$193.00	\$219.00	\$251.00
EPSL	Light Wt.	\$225.00	\$279.00	\$325.00
EPSG	LMG Lead-Free	\$303.00	\$384.00	\$412.00



See Best-Fit Sizing Chart on PG 10



Econo-Guard

Excellent Protection and Value Priced. Comes with 1" buckle closure that is long enough to tie. Double-fold binding for strength and tear resistance. **There is no pocket for this garment. Not compatible with attached thyroid collar.** If pocket and attached collar are required, please refer to our EZ guard aprons.

0.5mm Pb Equivalent Protection

cat. #	lead type	petite/ sm/ med	lg / xl	2X / 3X
EGR	Regular	\$188.00	\$220.00	\$270.00
EGL	Light Wt.	\$256.00	\$288.00	\$348.00
EGG	LMG Lead-Free	\$334.00	\$394.00	\$469.00

0.375mm Pb Equivalent Protection

cat. #	lead type	petite/ sm/ med	lg / xl	2X / 3X
EGSR	Regular	\$175.00	\$194.00	\$223.00
EGSL	Light Wt.	\$220.00	\$248.00	\$290.00
EGSG	LMG Lead-Free	\$304.00	\$321.00	\$373.00

Protection Options

What to know when comparing protective apparel.

MEDIA	BENEFITS	PROTECTION	ATTENUATION	WEIGHT
Regular Lead	Most economical and recyclable	100% Lead	0.5mm Pb Equiv. Protection avg. 97% attenuation over 80, 100, 120 KVP	9 - lbs. (based on medium front protection apron)
Lightweight Lead	Lighter than regular lead and recyclable	Lead-Tin	0.5mm Pb Equiv. Protection avg. 96.8% attenuation over 80, 100, 120 KVP	8 - lbs. (based on medium front protection apron)
"LMG"*	Lightest Weight, Lead-Free, Environmentally Friendly	Tungsten-Antimony	0.5mm Pb Equiv. Protection avg. 96.6% attenuation over 80, 100, 120 KVP	7 - lbs. (based on medium front protection apron)

Thyro-Guards



Standard

Binding all around means affordable comfort and flexibility.



No Binding

No binding means extra comfort, flexibility and lighter weight.



Mid-Binding

No binding at the top means extra comfort under the chin.

0.5mm Pb Equivalent Protection

CAT. #	Lead Type	Price	CAT. #	Lead Type	Price	CAT. #	Lead Type	Price
TYR	Regular	\$44.00	TNR	Regular	\$74.00	TVR	Regular	\$59.00
TYL	Light Wt.	\$54.00	TNL	Light Wt.	\$84.00	TVL	Light Wt.	\$69.00
TYG	LMG Lead-Free	\$64.00	TNG	LMG Lead-Free	\$94.00	TVG	LMG Lead-Free	\$79.00

0.375mm Pb Equivalent Protection

CAT. #	Lead Type	Price	CAT. #	Lead Type	Price	CAT. #	Lead Type	Price
TYSR	Regular	\$34.00	TNSR	Regular	\$53.00	TVSR	Regular	\$44.00
TYSL	Light Wt.	\$39.00	TNSL	Light Wt.	\$57.00	TVSL	Light Wt.	\$49.00
TYSG	LMG Lead-Free	\$48.00	TNSG	LMG Lead-Free	\$66.00	TVSG	LMG Lead-Free	\$58.00

Attached Standard

Attached No Binding

Attached Mid-Binding

0.5mm Pb Equivalent Protection

CAT. #	Lead Type	Price	CAT. #	Lead Type	Price	CAT. #	Lead Type	Price
TAR	Regular	\$54.00	TCR	Regular	\$84.00	TWR	Regular	\$69.00
TAL	Light Wt.	\$64.00	TCL	Light Wt.	\$94.00	TWL	Light Wt.	\$79.00
TAG	LMG Lead-Free	\$74.00	TCG	LMG Lead-Free	\$104.00	TWG	LMG Lead-Free	\$89.00

0.375mm Pb Equivalent Protection

CAT. #	Lead Type	Price	CAT. #	Lead Type	Price	CAT. #	Lead Type	Price
TASR	Regular	\$46.00	TCSR	Regular	\$63.00	TWSR	Regular	\$54.00
TASL	Light Wt.	\$51.00	TCSL	Light Wt.	\$67.00	TWSL	Light Wt.	\$59.00
TASG	LMG Lead-Free	\$59.00	TCSG	LMG Lead-Free	\$76.00	TWSG	LMG Lead-Free	\$68.00

Thyro-Guards



Pediatric

Binding all around means affordable comfort and flexibility.

Mammography

No binding means extra comfort, flexibility and lighter weight.

0.5mm Pb Equivalent Protection

CAT. #	Lead Type	Price
TPR	Regular	\$55.00
TPL	Light Wt.	\$60.00
TPG	LMG Lead-Free	\$73.00

CAT. #	Lead Type	Price
TMR	Regular	\$69.00
TML	Light Wt.	\$79.00
TMG	LMG Lead-Free	\$89.00

0.375mm Pb Equivalent Protection

CAT. #	Lead Type	Price
TPSR	Regular	\$53.00
TPSL	Light Wt.	\$57.00
TPSG	LMG Lead-Free	\$66.00

CAT. #	Lead Type	Price
TMSR	Regular	\$53.00
TMSL	Light Wt.	\$57.00
TMSG	LMG Lead-Free	\$66.00

Buckle Closure

If you prefer buckle closure to regular hook & loop, add "-B" to any of the collar numbers above and add \$5.00 to the price.

(Ex.: TYR-B would be \$49.00)



Buckle closure option available!

Attached Thyroid Collars

All Attached Thyroid Collars include:

- 1) A snap ring for easy collar attachment.
- 2) Attach anytime with tethered strap.
- 3) Unique 2-in-1 pocket design.

[store collar in one pocket and use other pocket for accessories]

Standard, No-Binding, and Mid-Binding collars are 6" tall x 6 1/2" wide x 24" strap.



Attached Thyroid option and our unique 2-in-1 pocket design!

Breast-Guard

Female Breast Protection

Allows full viewing of anatomy EXCEPT sensitive breast tissue. Hook and Loop strap drapes around the neck. Adjust shields anywhere along the strap. 0.5mm Pb equiv. protection. Sets are two shields plus one strap.

cat. #	lead type	price/set	size
BSR	Regular	\$44.00	A (Adult)
BSL	Light Wt.	\$54.00	C (Child)
BSG	LMG Lead-Free	\$64.00	

Two convenient sizes
Adult: 6"W x 7"H
Child: 4"W x 4½"H



A GREAT WAY TO PROTECT AND STORE ALL GUARDS!

2-Peg
 (for 1 apron)
#ARP-02
 \$72.00



Scolio-Guard

Unprotected neck for cervical view. Wrap around belt allows custom positioning of the open area. No-slip fabric underside. 0.5mm Pb equiv. protection.

Adult: 7.5" w x 26" L **Child: 6.0" w x 20" L**

cat. #	lead type	price/adult	size
SCR	Regular	\$99.00	A, C
SCL	Light Wt.	\$119.00	A, C
SCG	LMG Lead-Free	\$170.00	A, C



Scolio-Guard2

These breast guards offer the same as Scolio-Guards, but with the added **Hook and Loop** strip on the front to fold up out of the way when needed. Also available in Adult and Child sizes.

Adult: 7.5" w x 26" L **Child: 6.0" w x 20" L**

cat. #	lead type	price/adult	size
SCR2	Regular	\$119.00	A, C
SCL2	Light Wt.	\$139.00	A, C
SCG2	LMG Lead-Free	\$178.00	A, C



Semi-Guard

Extra Coverage Half Apronette

Convenient hook & loop closure. 0.5mm Pb equivalency protection. Excellent protection for patient and staff.



Default apronette color is Sapphire Blue, unless specified.

size	(width x length)
S	(12" x 12")
M	(18" x 16")
L	(24" x 20")
X	(24" x 24")
2X	(36" x 24")
Half	(24" x 12")
Kids*	(8" x 10")

Lap-Guard

Buckle Closure Half Apronette

Unbeatable protection for patient and staff. Easy-to-use 1" buckle belt closure. 0.5mm Pb equivalency protection.



Semi-Guard & Lap-Guard

SEMI cat.	LAP cat.	lead type	small	med/half	large	x-large	2X
SGR	LGR	Regular	\$90.00	\$100.00	\$110.00	\$130.00	\$160.00
SGL	LGL	Light Wt.	\$110.00	\$120.00	\$130.00	\$150.00	\$190.00
SGG	LGG	LMG Lead-Free	\$160.00	\$180.00	\$200.00	\$220.00	\$270.00

Semi-Guard Set & Lap-Guard Set

SEMI cat.	LAP cat.	lead type	price/set
STR	LTR	Regular	\$444.00
STL	LTL	Light Wt.	\$514.00
STG	LTG	LMG Lead-Free	\$744.00



Semi-Guard & Lap-Guard SETS include a 2-Peg Rack and the following apronettes:

small (yellow) large (royal blue)
medium (berry) extra-large (green)

Adult Gonadal-Guard

Attached belt with 1" buckle. 0.5mm Pb equivalency protection. Available in three sizes.

Gonadal-Guard (individual)

cat. #	lead type	small	medium	large
GNR	Regular	\$36.00	\$46.00	\$56.00
GNL	Light Wt.	\$46.00	\$56.00	\$66.00
GNG	LMG Lead-Free	\$51.00	\$61.00	\$71.00

Gonadal-Guard (set of all 3)

cat. #	lead type	price	size	(width x length)
GSR	Regular	\$120.00	S	(4" x 4.5")
GSL	Light Wt.	\$140.00	M	(6" x 7")
GSG	LMG Lead-Free	\$170.00	L	(7.5" x 9")



Hand Guard Radiation Protective Gloves

Five fingered protection for full dexterity. 0.5mm Pb equivalency dip molded core. Durable, soft navy vinyl covering. 15". Sold as a pair.

Hand-Guard 5-Finger

cat. #	hand	price
HGP	Pair	\$306.00

Sold as a pair!



NEW ANTI-MICROBIAL FABRIC

Inhibits the growth of bacteria and other microorganisms on the fabric surface



61-Sapphire

NEW DEFAULT FABRIC 61-Sapphire



N911-Stratos



N921-Ocean



N933-Midnight



64-Onyx



65-Amethyst

NATURA Smooth, Soft, Flexible with a Natural Feel



N911-Stratos



N921-Ocean



N933-Midnight



DIAMOND RIPSTOP FABRIC Medium Weight Nylon, Filament Reinforced Fabric



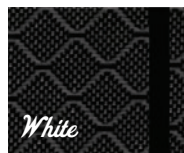
61-Sapphire



62-Ruby



63-Emerald



64-Onyx



65-Amethyst

FEATHER RIPSTOP FABRIC Light Weight Nylon, Filament Reinforced Fabric



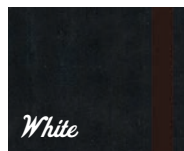
R701-Royal Blue



R702-Red



R703-Forest



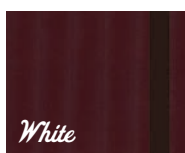
R704-Black



R705-Chocolate



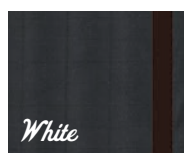
R706-Navy



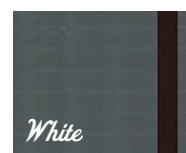
R707-Burgundy



R708-Kelly



R709-Charcoal

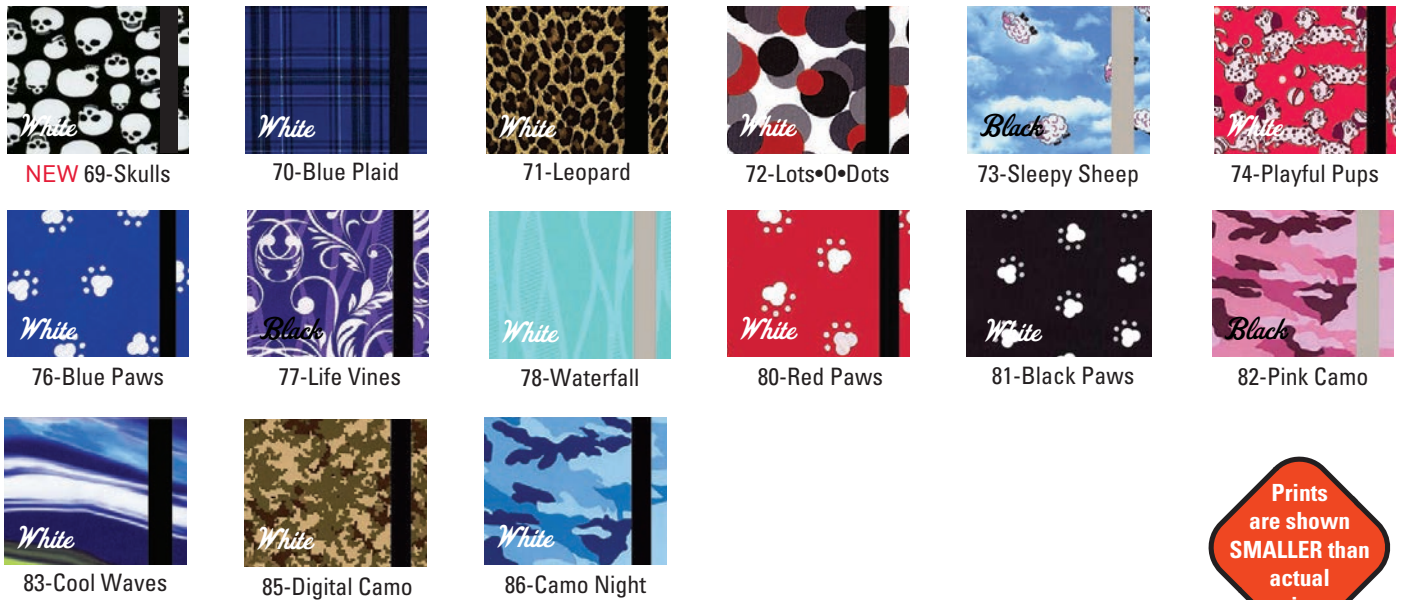


R710-Gray

NYLON SOLIDS Liquid Repellent, Light & Supple



COLORFUL PRINTS Liquid Repellent, Medium Weight



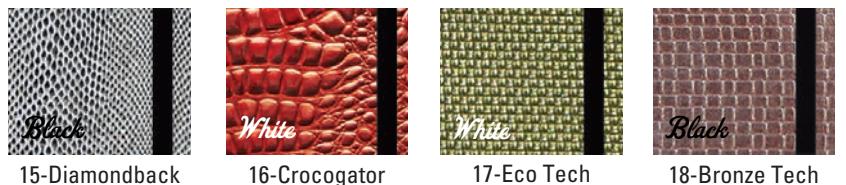
Prints are shown **SMALLER** than actual size

Liquid Proof Polyurethane Laminate Fabrics

DISCONTINUED

94-Big Dipper 95-Andromeda

Textured High Tech Fabrics



Protection Options

What to know when comparing protective apparel.

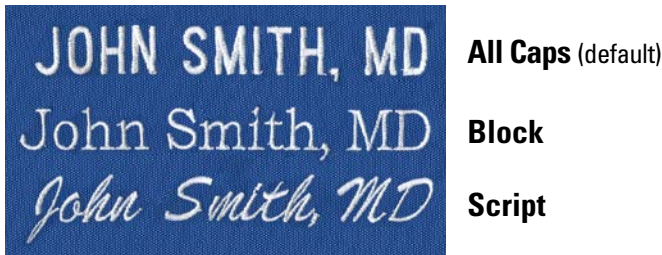
MEDIA	BENEFITS	PROTECTION	ATTENUATION	WEIGHT
Regular Lead	Most economical and recyclable	100% Lead	0.5mm Pb Equiv. Protection avg. 97% attenuation over 80, 100, 120 KVP	9 - lbs. (based on medium front protection apron)
Lightweight Lead	Lighter than regular lead and recyclable	Lead-Tin	0.5mm Pb Equiv. Protection avg. 96.8% attenuation over 80, 100, 120 KVP	8 - lbs. (based on medium front protection apron)
"LMG"*	Lightest Weight, Lead-Free, Environmentally Friendly	Tungsten-Antimony	0.5mm Pb Equiv. Protection avg. 96.6% attenuation over 80, 100, 120 KVP	7 - lbs. (based on medium front protection apron)

FREE Embroidery Sewn-In

Selected garments come with the first line (up to 24 letters) of embroidery free! Add flexibility with an embroidered patch. Please specify what you want embroidered and which type style you prefer (see below). Embroidered items are non-returnable, non-refundable.

#EML2 - \$20 for second embroidery line, up to 24 letters

Available Styles



All Caps (default)

Block

Script

Embroidery Add-On Patch

This flexible option has your information embroidered onto a patch. Hook & Loop on the back of the patch and on the garment secure the patch in place.

#EMP (Patch) \$25.00



(Patch above pocket)



(Hook and loop closure)

FREE Shoulder Strap

Simply ask for it with your order. Hook & loop Strap is attached to one shoulder and reaches across to the other.

#EMS (FREE)



Helps keep shoulders high and comfortable.

Accent Colors

Embroidery Colors

White (default)

Black (default)

Lt. Gray

Charcoal

Royal Blue

Red

Yellow

Orange

Tan

Brown

Binding Colors

Black (default)

Light Gray (default)

Navy

Royal Blue

Red

Yellow

Orange

Tan

Pink

Purple

Green

Burgundy

Matching the Apron to You

Techno-Aide Sizing Charts are based on averages. But let's face it... nobody is average! So, in order to get the Best Fit for You, please consider the following when measuring yourself for either a Standard or a Custom garment:

PROTECTION IS PRIMARY: Why are you wearing an apron? Protection from radiation! Some companies promise lighter weight garments, but their garments just don't measure up to proper specs. At Techno-Aide, we're much more concerned about your health and safety. Comfort is important, and while our garments are comfortable, comfort will always take a back seat to protection. Isn't that why you're purchasing Protective Apparel?

CIRCUMFERENCE CONSIDERATIONS: When measuring for a Front Protection Apron, measure from one side of the widest part of your body, around to the other side - the actual distance you want protected. Then, tell us if that measurement is your chest, tummy, or hips.

HEIGHT CONSIDERATIONS: In relation to your circumference, do you have a long or short torso? We want to make sure that you are adequately protected!

Best-Fit Sizing Charts

Front Protection Apron

Size	Front Width	Length	Chest Circumference
Petite	20"	32"	< 36"
Small	21"	34"	< 40"
Medium	22"	36"	< 44"
Large	24"	38"	< 48"
X-Large	26"	40"	< 52"
2X	28"	40"	< 56"
3X*	30"	40"	< 60"

Skirt / Kilt

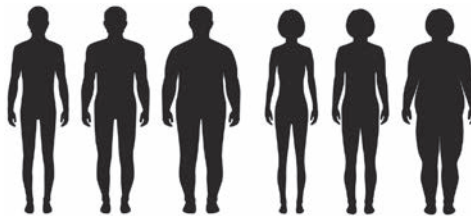
size	waist	hip	length
Petite	25"-27"	32"-34"	19"
Small	28"-29"	35"-36"	19"
Medium	30"-33"	37"-40"	20"
Large	34"-37"	41"-44"	21"
X-Large	38"-41"	45"-48"	22"
2X	42"-45"	49"-52"	22"
3X	46"-50"	53"-57"	22"

Vest (male) & Full Wrap Around

Size	Chest/Tummy	Vest Length	Full Wrap Length
Petite	35"-36"	19.5"	32"
Small	37"-38"	20"	34"
Medium	39"-41"	21"	36"
Large	42"-44"	22"	38"
X-Large	45"-49"	23"	40"
2X	50"-54"	24"	40"
3X*	55"-59"	24"	40"

Vest (female)

Size	Bust	Waist	Hip	Length
Petite	33"-34"	< 31"	35"-36"	19"
Small	35"-36"	< 33"	37"-38"	19.5"
Medium	37"-38"	< 35"	39"-40"	20"
Large	39"-41"	< 39"	41"-43"	21"
X-Large	42"-44"	< 41"	44"-46"	22"
2X	45"-49"	< 46"	47"-51"	23"
3X*	50"-54"	< 51"	52"-56"	23"



Sizes shown for apparel other than Front Protection are actual body measurements. All lengths are from the sternal notch or waist downward, depending on the garment.

Custom Sized Apparel

All custom sized apparel will include an additional fee for each item ordered. Please use the provided CAT numbers and pricing if you need a custom apparel item. Custom sized apparel is non-refundable.

ACP - \$125 fee for custom Aprons, Vests & Skirts

ACP2 - \$45 fee for other custom apparel items (ex: thyroid guards, gonadal guards)

*3X is the maximum size for standard (listed) pricing. All sizes exceeding 3X will be considered custom products. Additional fees apply.

Apron Peg Racks

Help extend the life of your aprons. Our apron racks are just the thing for you! 6" angled pegs keep garments from slipping. All-steel white enamel finish. **6-peg and 8-peg racks: Mounting holes on 16" and 24" centers.**

2-Peg
(for 1 apron)
#ARP-02
\$72.00



4-peg
(for 2 aprons)
#ARP-04
\$124.00



6-peg
(for 3 aprons)
#ARP-06
\$145.00



8-peg
(for 4 aprons)
#ARP-08
\$156.00



**Custom
Peg Racks
available**

Apron Hangers

Designed for standard aprons, panoramic, vests, skirts, etc. Top hook swivels for easy hanging. 21" long chromed-steel with anti-slip tips. Glove holders mounted onto back panel. Use on ARM-ZNH rack, peg rack, etc. Single ships @ 2 lbs.

Single Hanger
#ARH-01
\$29.00



Set of 10
#ARH-10
\$286.00



Wall Mounted Apron Racks

Ten or five swing-arm wall-mount apron racks. Mounting holes on 16" centers. All-steel durability with white enamel finish.



10-Arm #ARW-10 \$436.00



5-Arm, Swing Right #ARW-R5 \$260.00



5-Arm, Swing Left #ARW-L5 \$260.00

Glove Adapter

Retrofits to Mobile Rack. Holds six (6) 18" gloves.

#ARG-06
\$103.00



Apron/Glove Racks

Designed for one apron, but will hold more. All steel, heavy duty construction and a white finish. 16" & 24" holes match most wall studs. Glove holders mounted onto back panel. 28.5" long x 1.75" diameter bar prevents creasing.

WITHOUT GLOVE HOLDERS

#AGR-105
\$187.00



WITH TWO GLOVE HOLDERS

#AGR-110
\$251.00



WITH FOUR GLOVE HOLDERS

#AGR-115
\$272.00



Viewing Window Barriers

Bring a full **2.0mm Pb Equivalency** of radiation protection anywhere you need it with our x-ray protective mobile barriers. Each barrier features a **10" w x 12" h** clear window made of x-ray protective leaded glass; Window center is 60" from the bottom of the panel. Opaque barrier section is made of solid, leaded x-ray protection; Locking caster system. Custom sizes available. **Call for pricing on all barriers.**

#PBMW-2472 (Glass)

Leaded Glass: 10" w x 12" h
Overall Size: 24" w x 72" h
Ships @ 350 lbs.



#PBMW-3072 (Glass)

Leaded Glass: 10" w x 12" h
Overall Size: 30" w x 72" h
Ships @ 450 lbs.



#PBMW-3672 (Glass)

Leaded Glass: 10" w x 12" h
Overall Size: 36" w x 72" h
Ships @ 450 lbs.



#PBMW-2484 (Glass)

Leaded Glass: 10" w x 12" h
Overall Size: 24" w x 72" h
Ships @ 450 lbs.



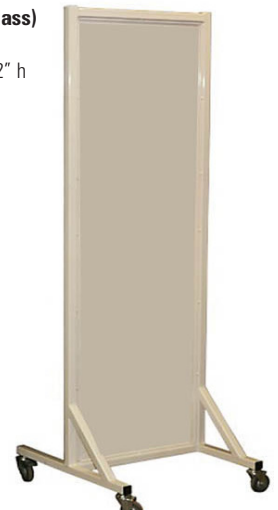
#PBMW-3084 (Glass)

Leaded Glass: 10" w x 12" h
Overall Size: 30" w x 84" h
Ships @ 450 lbs.



#PBMW-2472NW (Glass)

No window.
Overall size: 24" w x 72" h
Ships at 350lbs.



Viewing Panel Barriers

Bring radiation protection anywhere you need it with our full body x-ray mobile barriers. Transparent clear upper section for protection and clear field of view. Available in 2.0mm lead equiv. high quality Schott leaded glass. Powder coated opaque lower section is manufactured with 16 gauge solid steel & 2.0mm Pb equiv. leaded protection and contoured sides. Mobile barrier is supported by heavy grade steel legs with heavy duty medical grade locking casters (two with brakes) for easy mobility. Easy to clean. Crated for secure shipment. Shipping worldwide by ground, air, or sea freight. Manufactured by hand in the USA. Custom sizes available.

Call for pricing on all barriers.

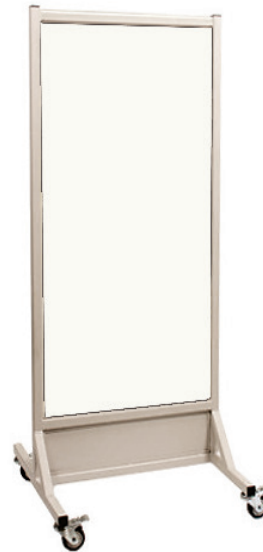
#PBMB-3024 (Glass)

Leaded Glass: 30"w x 24"h
Opaque Panel: 30"w x 48"h
Overall Size: 33"w x 75"h
Ships @ 450 lbs.



#PBMB-3060 (Glass)

Leaded Glass: 30"w x 60"h
Opaque Panel: 30"w x 12"
Overall Size: 33"w x 75"h
Ships @ 450 lbs.



#PBMB-3630 (Glass)

Leaded Glass: 30"w x 36"h
Opaque Panel: 30"w x 39"h
Overall Size: 33"w x 75"h
Ships @ 450 lbs.



#PBMB-3048 (Glass)

Leaded Glass: 30"w x 48"h
Opaque Panel: 30"w x 22"h
Overall size: 33"w x 75"h
Ships @ 450lbs



Viewing Panel Barriers

Custom sizes available. Call for pricing on all barriers.

#PBMB-4836 (Glass)

Leaded Glass: 48" w x 30" h
 Opaque Panel: 48" w x 36" h
 Overall size: 51" w x 75" h
 Ships: 650lbs



#PBMB-4830 (Glass)

Leaded Glass: 48" w x 30" h
 Opaque Panel: 48" w x 42" h
 Overall Size: 55" w x 75" h
 Ships: 450lbs



#PBMB-7236 (Glass)

Leaded Glass: 72" w x 36" h
 Opaque Panel: 72" w x 36" h
 Overall size: 75" w x 75" h
 Ships: 700lbs



#PBMB-4624 (Glass)

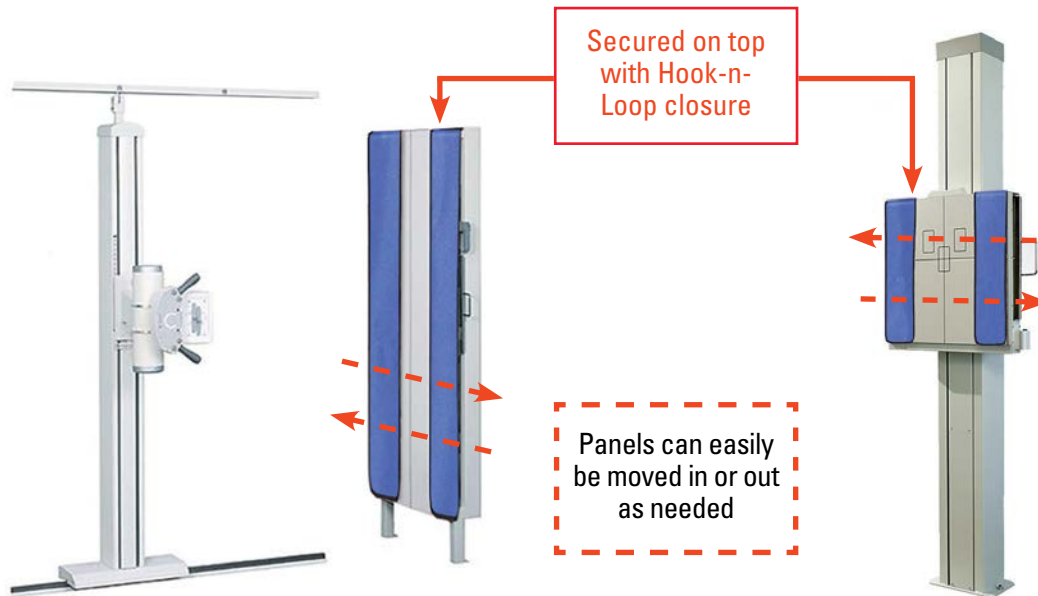
Leaded Glass: 36w" x 24h"
 Opaque Panel: 36w x 37h"
 Overall size: 36w" x 61h"
 Ships @ 450lbs



Scatter Shields

Pair of 0.5mm Regular Lead Panels with sewn in hook-n-loop at the top of each panel. Customer secures hook-n-loop on top of wall bucky so panels can easily be secured and/or moved as needed.

cat.#	dimensions (L x W)	price
SSR-19	18" L x 8" W	\$99.00
SSR-36	36" L x 8" W	\$162.00
SSR-51	51" L x 8" W	\$194.00



Lead Blockers

Maximize efficiency and optimize use of receptors. Divides receptor for multiple exposures. Covered with blue vinyl laminate. Flexible vinyl-lead positions easily. Cleans easily with most common disinfectants. Provides 1.0mm Pb Equivalency shielding.

CAT. #	Blocker Size	Fits Receptor	Price
FLB-58	5" x 8" (13x18cm)	8" x 10"	\$35.00
FLB-52	5" x 12" (13x30cm)	10" x 12"	\$45.00
FLB-61	6" x 10" (15x24cm)	10" x 12"	\$45.00
FLB-71	7" x 11" (18x28cm)	11" x 14"	\$60.00
FLB-77	7" x 17" (18x43cm)	14" x 17"	\$85.00
FLS-78	Set of FIVE listed above		\$243.00

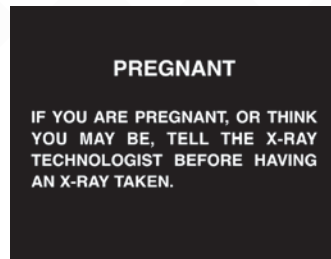
NEW

FLB-74	14" x 14" (28x28cm)	14" x 14"	\$70.00
FLB-90	14" x 17" (28x43cm)	14" x 17"	\$160.00
FLB-17	17" x 17" (43x43cm)	17" x 17"	\$195.00



Department/Caution Signs

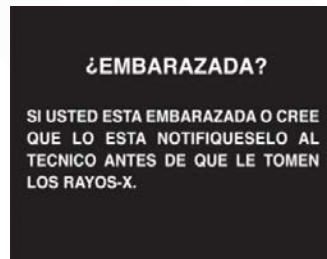
All signs are constructed of durable 1/8" Trovixel™, a plastic specific to the sign industry. Double-faced tape is attached to the back for mounting. Large Signs are 8" x 10". Small Signs are 4" x 10". The large MRI "Danger" Signs are 12" x 18".



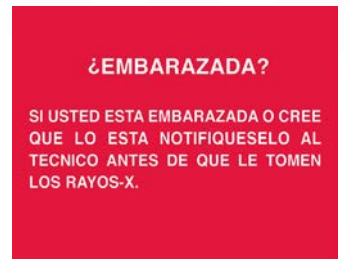
#PS-04EB \$20.00



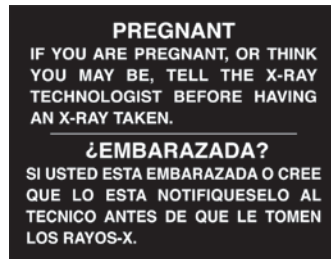
#PS-04ER \$20.00



#PS-04SB \$20.00



#PS-04SR \$20.00



#PS-08B \$20.00



#PS-08R \$20.00



#VS-10EB \$20.00



#VS-10ER \$20.00



#CXR-13EB \$15.00



#CXR-13ER \$15.00



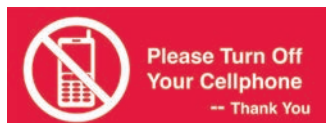
#CXR-13SB \$15.00



#CXR-13SR \$15.00



#NCP-24B \$15.00



#NCP-24R \$15.00



#XRR-19B \$15.00



#XRR-19R \$15.00



#NFD-22B \$20.00



#NFD-22R \$20.00



#CRA-15 \$20.00



#CRA-16 \$20.00



#CRA-17 \$15.00



#CRA-18 \$15.00

Radiation Badge Storage

Provides a central location for all badge related activity. Exposure record display area and note clip. Accommodates different styles and sizes of badges. Ring board is also available for Nuclear Medicine and PET.

CAT. #	Style	Badges	Board Size	Price
FB-10N	narrow	10	12" x 5"	\$79.00
FB-10W	square/hex	10	12" x 9.25"	\$105.00

Badges available from your local provider



HEX



SQUARE



SQUARE



NARROW

Caliper

Accurately measures body thickness to be x-rayed, up to 21" in depth. Calibrated in both inches and cm. Made of durable aluminum. 1" wide x 2 1/4" tall x 10 1/8" leg. Ships @ 1 lb.



#CAL-21
\$57.00



Marking Pens and Refills

Highlights points of interest on a film. Wax markers resist smudging, but are not permanent. NOT to be used in place of lead markers. NOT a legally acceptable marking method.

PENS (5 per pack)

CAT. #	Pen Color	Price Per Pack
MPY-11	Yellow	\$30.00/pk
MPR-12	Red	\$30.00/pk
MPW-13	White	\$30.00/pk
MPA-19	2Y, 2R, 1W	\$30.00/pk

#MPA-19
\$30.00
5 pack

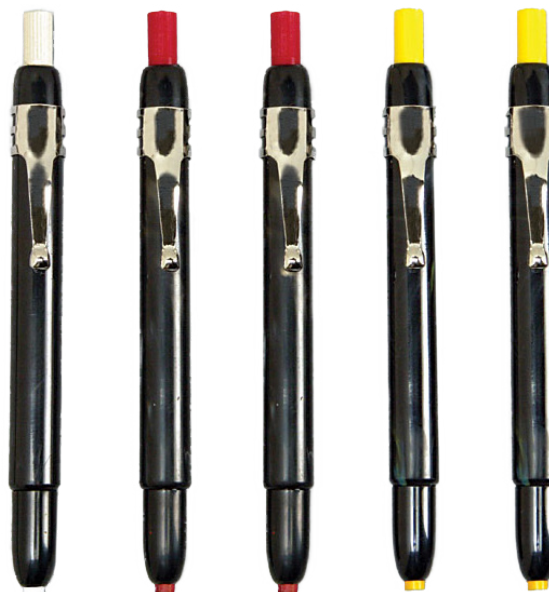
REFILLS (72 per pack)

CAT. #	Refill Color	Price Per Pack
MPY-21	Yellow	\$20.00/pk
MPR-22	Red	\$20.00/pk
MPW-23	White	\$20.00/pk

Refills come in pkgs of 72 pieces.

Order per number of packs.

QTY of 1 will be shipped with 5 pens.



Chiropractic Head Rest Rolls

Smooth headrest paper. Size 8 1/2" x 225 ft. 25 Rolls per case. White color.

#GCH-32
\$111.00 (25 rolls per case)



Chiropractic Facial Sheets

Smooth paper with facial slit. 1000 Rolls per case. White color. Size 12" x 12".

#GCS-35
\$54.00 (1000 sheets per case)



SANI-CLOTH® AF3 Alcohol-Free Wipes

Contains an excellent range of effectiveness. Cleans, disinfects, deodorizes & fragrance-free. Alcohol content: ALCOHOL-FREE (less than 0.016%). Recommended Contact Time: 3-minutes or less. Commonly used for **MAMMOGRAPHY, ULTRASOUND and most other IMAGING EQUIPMENT.** PLUS daily use items like table pads, sandbags, coated sponges, transfer boards, aprons, shields, vinyl straps... you name it. Meets CDC, OSHA and CMS Tag F441 guidelines.

cat.#	wipe size	quantity	price
GWP-WAF	6" x 6 3/4"	tub of 160 wipes	\$14.50
GWP-WAFCS	6" x 6 3/4"	case of 12 tubs	\$173.00



EASY SCREEN™ Cleaning Wipes

Touch-Screen cleaner that "works at the speed of technology." Rapidly cleans dirt, grime, fingerprints and smudges from healthcare equipment. Helps prevent cross-contamination with a 70% isopropyl alcohol (IPA) solution. Commonly used for **Touch-Screens, Tablets, Lighting, and most other imaging equipment.** Effectively treats acrylic, polycarbonate, glass, stainless steel, and more.

#GWP-ESW
\$178.00 (12 tubs of 70 wipes)



Sandbags

All sandbags are filled with sand and are ready to use. Heat sealed inner sleeve prevents the leakage of sand. All seams are sewn and tear resistant. Deep green outer cover is heavy gauge, reinforced vinyl. Every sandbag includes a reinforced webbing handle.

No additional charges for different colors!

Available colors shown here



All sandbags include a weight ID tag



Custom Sizes Available!



5-lb
9" x 9"
#SBC-05
\$32.00



10-lb
11" x 11"
#SBC-10
\$37.00



10-lb
11" x 11"
#SBC-HL
\$49.00



20-lb
12" x 14"
#SBC-20
\$42.00

Sandbag Kits

Stack up savings by ordering kits



GENERAL SET (A)
#SBK-GA \$253.00 set
Set: (2) 3-lb / 5" x 9"
(2) 7-lb / 6" x 14"
(1) 5-lb / 5" x 12"
(2) 10-lb / 11" x 11"
(1) 5-lb / 7" x 9"



GENERAL SET (B)
#SBK-GB \$205.00 set
Set: (2) 3-lb / 5" x 9"
(2) 7-lb / 6" x 14"
(2) 10-lb / 11" x 11"



PEDIATRIC
#SBK-PA \$135.00 set
Set: (1) 1-lb / 4" x 5"; (1) 2-lb / 4" x 9"
(1) 3-lb / 5" x 9"; (1) 5-lb / 7" x 9"
(1) 7-lb / 6" x 14"

NEW COMPLETELY SEALED VINYL BOLSTERS

2019 will be another year of innovation for Techno-Aide. Providing a safer working environment is our top priority. You will see an assortment of new products and some incredible upgrades to our existing line designed to make your job easier and safer. This year Techno-Aide once again leads the way in innovation and protection by introducing our new infection-resistant vinyl bolsters.

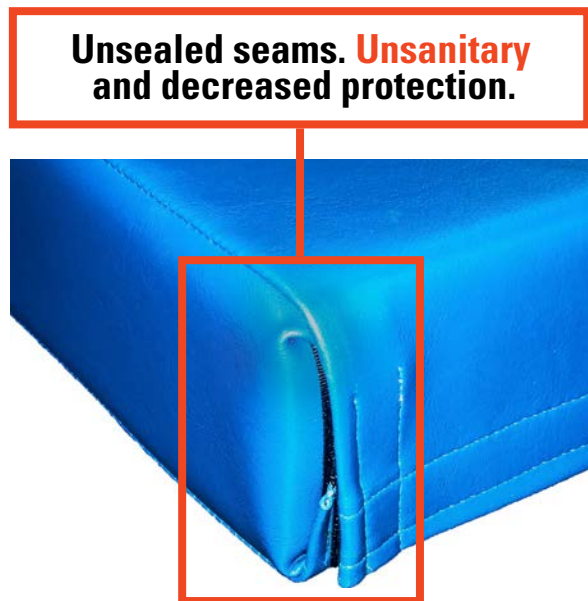
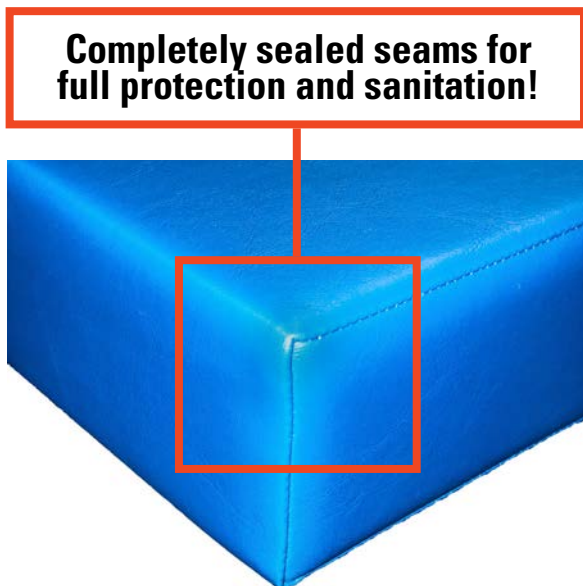
With hundreds of options available today, Techno-Aide makes the choice easy and affordable without sacrificing patient’s health. This new bolster line protects against the growing threat of infections like MRSA and aggressive antibiotic-resistant bacteria. These “super bugs” are one of the largest threats the healthcare industry faces today. Techno-Aide is here to protect technologists’ and patients!

Utilizing a heavy medical-grade, anti-microbial blue vinyl fabric is sewn and welded at all seams to preserve the core material. Completely sealed and secure, these vinyl bolsters inhibit the growth of any harmful bacteria inside and out. Without sacrificing convenience, our one of a kind bolsters can be cleaned with any standard approved hospital disinfectant. Compared to other unsealed and unsanitary “hook and loop” closures, these bolsters are the clear and easy choice for the future.

This catalog will showcase our most popular sizes and shapes. Don’t forget, Techno-Aide is happy to offer custom ordering for any shape or size you can imagine. You need it, we can make it!

NEW Sealed Vinyl Bolsters Feature

- A Firm high density urethane foam core for maximum support
- Waterproof outer coating for superior infection control
- Easy to clean surface for infection control
- Increased durability and tensile strength
- Radiolucent (seams will show)
- Safe for multi-patient use
- Non-removeable cover



Vinyl-Covered Bolster Blocks

Reusable blocks, bolsters, and wedges are manufactured from **firm**, high-density urethane foam. Royal Blue outer covering is durable, heavy gauge, reinforced vinyl. Seams are sewn and tear resistant. Easy to clean Bolsters are **RADIOLUCENT**, however, the seams may show. Provides excellent support for a wide variety of imaging needs. Stocked bolsters are labeled in **Green**.

#YVF45

Cylinder
26" x 6" dia.
\$224.00



#YVFA

Cylinder
24" x 8" dia.
\$157.00



#YVFB

Semi-Round
8" x 18" x 6"
\$127.00



#YVFJ

Block
8" x 12" x 3"
\$81.00



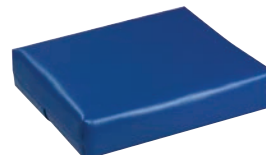
#YVFG

Block
8" x 12" x 6"
\$106.00



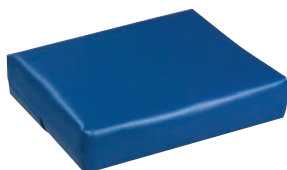
#YVFH

Block
12" x 14" x 3"
\$72.00



#YVFP

Block
18" x 24" x 4"
\$227.00



#YVFK

Block
20" x 13" x 3"
\$118.00



#YVFI

Block
24" x 15" x 3"
\$127.00



#YVF42

Block
12" x 12" x 9"
\$303.00



#YVF43

Block
12" x 12" x 12"
\$457.00



#YVFO

DEXA Block
20" x 20" x 12"
\$351.00



Vinyl Bolster Kits

#YSU1

KIT Includes:
YVFB, (2) YVFG, YVFJ
\$399.00



#YSU2

KIT Includes:
(2) YVFG, YVFJ
\$275.00



#YSU3

KIT Includes:
YVFB, YVFD, YVFG
\$429.00



Vinyl-Covered Bolsters Wedges & Kits

#YVFU

30°/ 60°/ 90° Wedge
10" x 24" x 6"
\$227.00



#YVFO

45° Wedge
7" x 21" x 7"
\$248.00



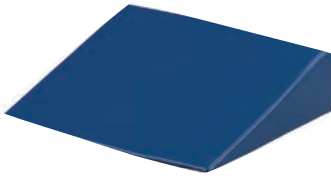
#YVFD

45° Wedge
8" x 16" x 8"
\$219.00



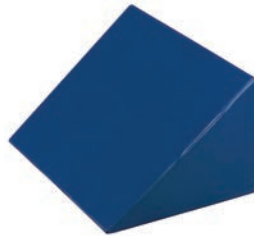
#YVFC

20° Wedge
24" x 18" x 6"
\$193.00



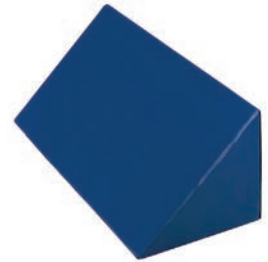
#YVDB

30° CardiacWedge
28" x 27" x 16"
\$366.00



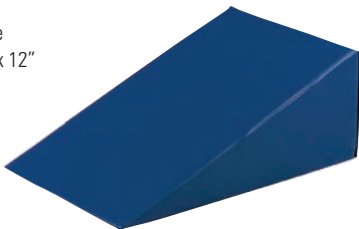
#YVDA

45° CardiacWedge
28" x 14" x 14"
\$220.00



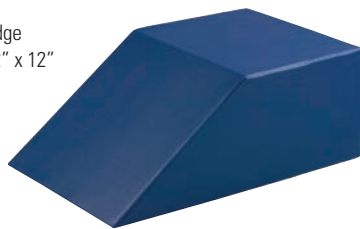
#YVFE

20° Wedge
20" x 32" x 12"
\$277.00



#YVFF

50° Wedge
20" x 32" x 12"
\$496.00



#YVF40

26° Wedge/Knee
13" x 17" x 6"
\$320.00



Bolster Kits

#YSU4

KIT Includes:

YVFA, YVFB, YVFC, YVFD, YVFG, YVFH, YVFJ, YVFK
\$1015.00



#YSU5

KIT Includes:

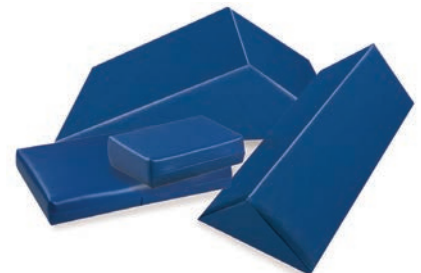
YVFB, YVFC, YVFD, YVFJ, YVFO
\$825.00



#YSU6

KIT Includes:

YVFJ, YVFK, YVFO, YVFM
\$775.00



Identifier Style

Identifier markers have high-impact polystyrene casing. Enhances quality control with fewer repeat exams. Provides basic, yet personalized image identification.



#TA-1 \$20.00 ea. set

R & L - 5/8"

2 initials - 3/8" or 3 initials - 1/4"

Without initials, order:

#TA-4 @ \$13.00/set



#TA-7 \$24.00 ea. set

R & L - 1"

2 initials - 3/8" or 3 initials - 1/4"

Without initials, order:

#TA-5 @ \$14.00/set



#TA-002 \$20.00 ea. set

R & L - 5/8"

2 initials - 3/8" or 3 initials - 1/4"

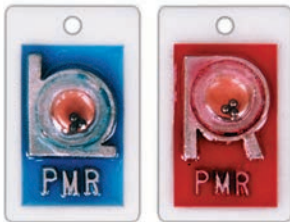
Without initials, order:

#TA-001 @ \$13.00/set



#TA-A3 \$7.00 each

Arrow - 1" Identifier Style



#TA-17 \$37.00 ea. set

Identifier Style R & L - 7/8" Position

2 initials - 3/8" or 3 initials - 1/4"



#TA-16 \$32.00 ea. set

Identifier Style R & L - 7/8" Position

No initials

Stencil Clipper

High quality plated steel construction. Stenciled, non-personalized right and left identifiers.

#XSCP-10
\$15.00 ea.



NEW Marker Mates!

A new, reusable sticky strip that adheres markers to receptors or equipment. Simply peel off the protective film and apply to the back of your markers. Each pair of Marker Mates will last approximately 30-days under normal use and care. No more need for tape when you can instantly mate your markers!

- The world's **strongest x-ray adhesive**
- **3x Stronger** than standard marker adhesives
- Tested up to **6 months of continuous use** in clinical studies
- **Works with every type of marker!**
- Easy to wash, clean and reuse
- **Reduces the spread of infections and disease**

#MM-XRAY	#MM-XRAY10	#MM-XRAY25
1 pair	10 pairs	25 pairs
\$3.75	\$35.00	\$90.00

Save money and order in bulk today!

#MM-XRAY100	#MM-XRAY250	#MM-XRAY500
100 pairs	250 pairs	500 pairs
\$350.00	\$975.00	\$1750.00



NEW!



Elite Style

Elite markers have the most DURABLE aluminum casing. These markers provide the absolute best in QCI. Easily identifiable. RED for "R" markers and misc. words / BLUE for "L" markers.

Hundreds of custom combinations available!



#1E \$22.00 ea. set
R & L - 5/8"
2 initials - 3/8" or 3 initials - 1/4"
Without initials, order:
#4E @ \$14.00/set



#7E \$25.00 ea. set
R & L - 1"
2 initials - 3/8" or 3 initials - 1/4"
Without initials, order:
#5E @ \$16.00/set



#8E \$25.00 ea. set
NEW Elite PLUS
R & L - 5/8" Comes with
2-3 initials per line - 1/4"



#TA-137 \$35.00 ea. set
R & L is 1/2". 2 initials - 1/4"
NEW Without initials,
order: **#TA-18** \$29.00/set



#TA-13 \$32 ea. set
Elite Style R & L - 5/8"
2 initials - 3/8" or 3 initials - 1/4"
Without initials, order:
#TA-14 @ \$27.00/set



#TA-13-GP



#TA-13-CG



#TA-13-TR



#TA-13-BK



#TA-13-GPK



#TA-13-PK



#TA-13-PW



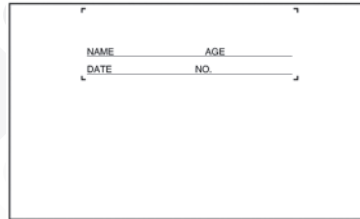
#TA-13-CO



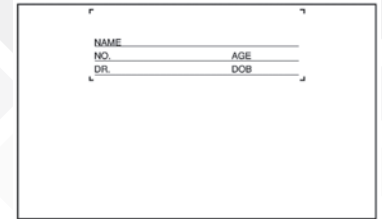
#TA-13-CY

I.D. Cards - Standard

Standard Cards measure 3" x 5". Each card is imprinted with standard legend. Each pack contains 1,000 cards. Shipped from stock.



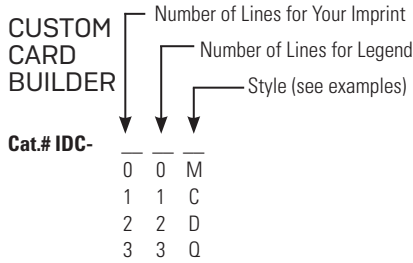
#IDS-02M \$46.00/pk
Blank with 2-Line Legend



#IDS-03M \$46.00/pk
Blank with 3-Line Legend

I.D. Cards - Custom

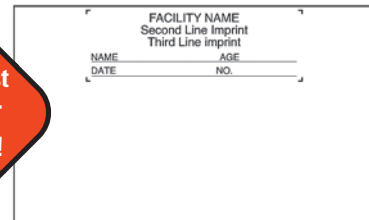
Custom Cards measure 3" x 5" with 1" x 3" imprint window (GE and Kodak compatible cards are 3 1/4" x 7 3/16" with 1" x 2 1/2" imprint window). Each card is imprinted with: Your Custom Imprint (0, 1, 2 or 3 lines); Custom Legend (0, 1, 2 or 3 lines); (if not specified, standard legend will be used). Each pack contains 1,000 cards.



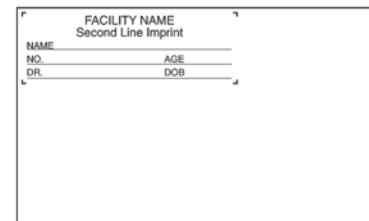
Artwork may not be an exact match to that of other suppliers.

Custom Cards are non-returnable.

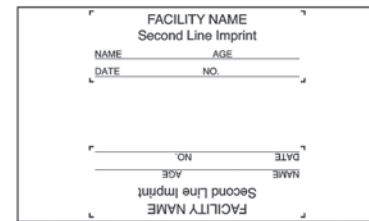
If not specified, standard legend will be used.



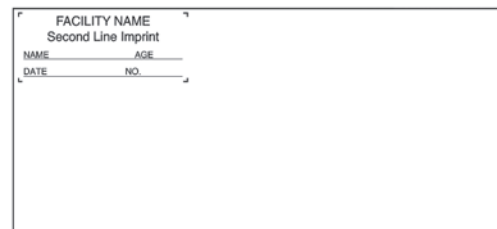
EXAMPLE:
#IDC-32M



EXAMPLE:
#IDC-23C



EXAMPLE:
#IDC-22D



EXAMPLE:
#IDC-22Q

style	imprint location	1000 cards	5000 cards*
M	Middle Top	\$55.00/M	\$49.00/M
C	Top Corner	\$55.00/M	\$49.00/M
D	Double Middle	\$63.00/M	\$57.00/M
Q	GE or Kodak (compatible)	\$65.00/M	\$59.00/M

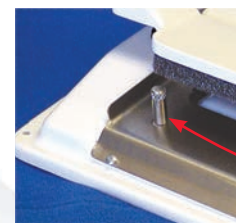
(*5000 quantity is priced per 1000 cards.)

(When ordering, a faxed diagram is most helpful.)

I.D. Printer

Fully automatic exposure for perfect image prints. Adjustable exposure timer for most film types. Film positioning guides for middle or corner ID cards. Durable, all-metal housing. Plug-in model only; 110/120 VAC. 8" w x 8" d x 3" h. Shipping weight: 6 lbs.

#IDP-33
\$645.00



Pin Adapter can be set for use with middle or corner cards.

Negative Preservers

Available in three sizes to accommodate all films. All include stock copy lines for: file number, name, date, doctor and remarks. Made of 32lb. gold kraft stock. Thumbcut for easy access to films. Open end (opens along short side edge). Large sized preservers available in red and green.

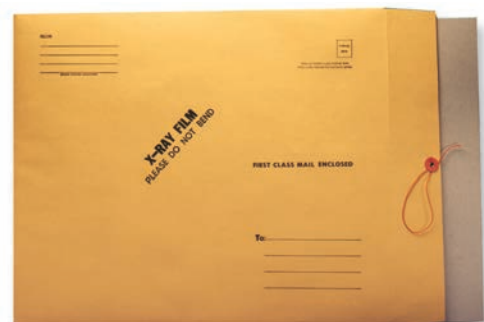
cat#	size	qty./ctn	wt./ctn	price	
JNS-OEK	8.5 x 10.5	500	25 lbs.	\$239.00	
JNM-OEK	10.5 x 12.5	500	25 lbs.	\$260.00	
JNL-OEK	14.5 x 17.5	250	25 lbs.	\$199.00	
cat#	size	qty./ctn	wt./ctn	price	color
JNL-OEG	14.5 x 17.5	250	25 lbs.	\$530.00	Green
JNL-OER	14.5 x 17.5	250	25 lbs.	\$530.00	Red



Cardboard Insert Mailers

Available in two sizes. Made of 32lb. brown kraft stock. Open end, string & button closure. Chipboard insert for rigidity. Printed with bold black stock copy.

cat#	size (inches)	qty./ctn	wt./ctn	price
JMM-SBC	11 x 13	50	7 lbs.	\$128.00
JML-SBC	15 x 18	50	14 lbs.	\$95.00



Green Diamond Border Mailers

Available in two sizes. Made of 11pt. manila stock. Open end, string & button closure. Green diamond border with red. "X-Ray Film, please do not bend."

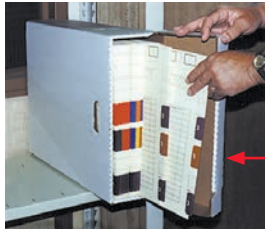
cat#	size (inches)	qty./ctn	wt./ctn	price
JMM-SBD	11 x 13	50	6 lbs.	\$155.00
JML-SBD	15 x 18	50	11 lbs.	\$160.00



E-Z X-Ray Storage Boxes

Allows for the efficient storage of x-ray film files. (Sold in case lots.) Strong and durable with reinforced handles. One piece, easy fold assembly. Can be stacked without crushing. Ideal for archiving files, temporary storage, or moving files. Accommodates jackets up to 14" x 17". Upright: lid opens up. Side down: lid opens forward. (printed legend provided both ways.) Sized for OSHA lift load capacity. Each box O.D.: 6.25" x 16" x 19.5". Ships as 30 lbs. per case. 6 cases or less via FedEx/UPS. 7+ cases via motor freight.

Cat.#ETX-70
\$220.00
(15 boxes per case)



Easy to file vertically or horizontally!

Horizontal Filing



Vertical Filing



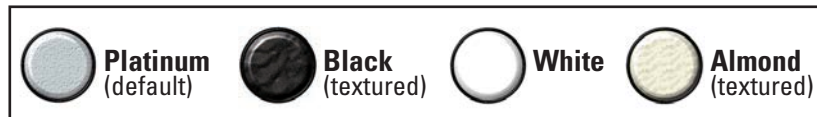
Techno-Tuff™ X-Ray Filing Cabinets

The industry standard cabinets for ARCHIVE or ACTIVE film storage. Fully assembled, tough, and versatile. All steel construction offers maximum strength. Solid back and side panels for security. 15 3/8" vertical shelf clearance. 12-gauge corner posts for vertical strength. Dividers are 6" apart. Full height dividers add vertical strength and stability. Full depth dividers prevent snagging and ripping of jackets. Available Colors: Platinum (-7), Black (-63), White (-61), Almond (-6).

Ships through motor freight

CAT.#	Height	Depth	Width	Price
618A	84"	18"	36"	\$1015.00

Available Colors



#618A
(shown in almond color)



SPECIAL NOTE ABOUT MOTOR FREIGHT

Please provide information about your receiving area to determine standard or special delivery requirements. Trucking companies will not unload shipments to accounts that do not have a commercial height receiving dock. In most other circumstances, however, special arrangements can be made available at a reasonable extra freight charge.

Receptor Filing Carts

Protect your investment! "CRC" CR-Plate Units have special, impact resistant padding on shelves and vertical surfaces to prevent damage to expensive CR-Plates. Accommodates film jackets, cassettes, and IR plates. Available Colors: Platinum (-7), Black (-63), White (-61), Almond (-6).

CAT. #	Dimensions	Vert. Clearance	Compartments	Weight	Price
#CRC-38	24"(w) x 18"(d) x 42.5"(h)	16.5"	8 (6")	130 lbs	\$1152.00
#CRC-24	24"(w) x 18"(d) x 42.5"(h)	16.5"	4 (6")	100 lbs	\$1152.00

Tall Receptor Cart

#CRC-38
\$1152.00

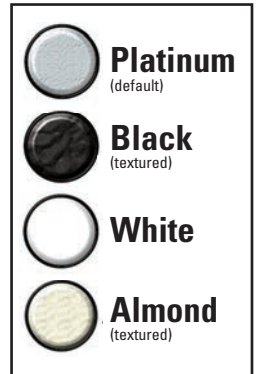


Mini Receptor Cart

#CRC-24
\$1152.00



Available Colors



Stainless Steel Utility Cart

All-purpose utility cart ideal for sponges, linens, accessory items etc. 300 lb capacity. 24" x 15" x 32"h.

#BCS-73
\$460.00



Standard Utility Cart

All-purpose utility cart ideal for sponges, linens, accessory items etc. 150 lb capacity. 25" x 19" x 30"h.

#UC-70
\$338.00



Standard Step Stools

All steel 350-lb. capacity. Skid resistant black mat. 9" high stool with 11" x 13 3/4" top; 34" tall with handrail. Handrail is 7/8" dia. chrome-plated tubular steel. Easy assembly.

#BSH-65
\$99.00



Most Popular Best Selling Stool!

Bariatric Step Stools

Bariatric 1000-lb. capacity. Step has anti-slip gripper strips. Flared base legs to prevent tipping. Step Only: 19" long x 15" wide x 8" high. Handrail model height is 36".

#BBH-69
\$443.00



#BRF-45
\$20.00
Set of four (4) rubber tips for standard and bariatric step stools.



Heavy Duty Step Stools

Bariatric 600-lb. capacity. Steps have a skid resistant black mat surface. Height: Single Step: 8 3/4" high step; 34 1/2" with handrail. Double Step: 8" & 16" high steps; 43" with handrail. Handrail is 1" dia. chrome-plated 16g steel.

#BBS-61
\$200.00



#BBD-63
\$518.00



#BBD-66
\$485.00



Standard Exam Lamp

Flexible gooseneck arm with 360° adjustable steel shade. Chrome steel stand has adjustable height range: 50" to 74". Uses one 60-watt incandescent bulb (not included). Weighted stationery base or 23" diameter mobile base.

#BEL-90
\$155.00



Inner shade keeps outer shade cool!

Eco-Series LED Light

Provides a large, bright working surface to ensure clinical efficiency. The 23" gooseneck arm is easy to maneuver for precise and versatile positioning. The long-life, eco-friendly LED bulb saves on energy and cost with more than twice the average life of other LED exam lights available. Easy to clean and cool to the touch for better safety.

#BEL-98
\$603.00



LED bulb is easy to clean and cool to the touch for better safety!

Pneumatic Lift Stool with Locking Casters

Pneumatic gas cylinder easily adjusts height with convenient under-cushion ring. Adjustable height: 16" to 21". 16" x 3.5" thick seat cushion. 5-leg, chrome base. Reverse casters auto-lock when seated. 23" base provides excellent stability.

#BPS-30
\$385.00



Stool Color options available on PG 33

Pneumatic Lift Stool with Backrest

#BPS-32
\$355.00
*BPS-30 with adjustable backrest and paddle height lever shown



Spin-Lift Adjustable 5-Leg Stool

Solid steel, machined thread screw adjusts height by rotation of the stool cushion. Adjustable height: 18" to 22". 16" x 4" thick seat cushion. 5-leg, die cast aluminum base. 23" base provides excellent stability.

#BAS-40
\$325.00



Spin-Lift Adjustable 4-Leg Stool

Solid steel, machined screw adjusts height by rotation of the stool cushion. Adjustable height: 19" to 25 1/2". 14 1/2" x 4" thick seat cushion. 4-leg chrome steel base with footring.

#BAS-30
\$210.00



Pneumatic 5-Leg Lift Stool

Pneumatic gas cylinder easily adjusts height with convenient under-cushion ring. Adjustable height: 19" to 24". 16" x 4" thick seat cushion. 5-leg, die cast aluminum base. 23" base provides excellent stability.

#BPS-20
\$335.00



Pneumatic Lift Stool with Backrest

#BPS-22
\$510.00

*BPS-20 with adjustable backrest and D-ring height lever shown

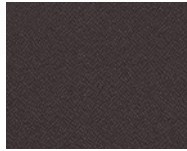


Upholstery Fabric Options

POLYESTER Celestial



1200-Oberon



1201-Rhea



1203-Callisto



1204-Titan



1207-Hyperion



1208-Europa

POLYESTER Soft sit



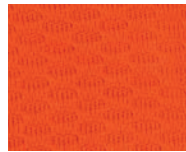
2570-Graphene



2572-Ash



2575-Tsunami



2576-Magma

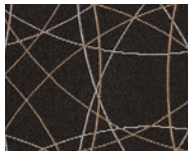


2577-Molten

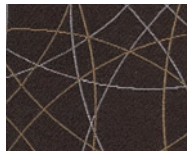


2578-Kipuka

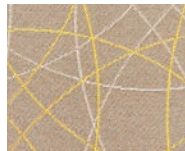
POLYESTER Freedom



3400-Orbit



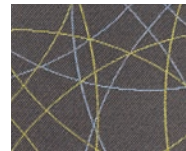
3401-Stealth



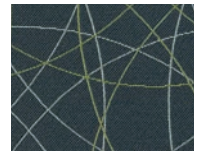
3402-Flight



3403-Cocoa

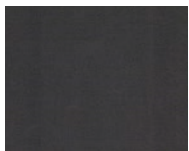


3404-Evening

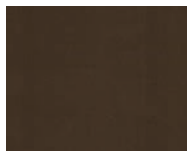


3408-Oasis

VINYL Stage



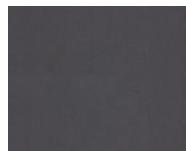
V50-Cats



V53-Grease



V55-Aida



V52-Chicago



V59-Fame



V58-Shrek



ADMINISTRATION/MANUFACTURING

7117 Centennial Blvd. Nashville, TN 37209

Orders can be placed online or sent to orders@techno-aide.com

For official Quotes: quotes@techno-aide.com

Any questions can be directed to customerservice@techno-aide.com

P: 800.251.2629 or 615.350.7030

F: 800.554.6275 or 615.350.7879

techno-aide.com