



# Markers

2019  
PRODUCT  
GUIDE

## REFERENCE

“Each radiograph must include an appropriate marker that clearly identifies the patient’s right (R) or Left (L) side. Medico-legal requirements mandate that these markers be present. R and L markers must be used with CR and DR digital imaging. The development of digital imaging and the use of CR and DR have enabled an environment in which the R and L markers can be placed on the image electronically. This is not recommended because of the great potential for error and legal implications. Anatomic markers should be placed on the CR cassette or DR table similar to screen-film cassettes.”  
 [Merrill’s Atlas of Radiographic Positioning and Procedures, 9780323073219, text extract]

Markers can be made with letters or numbers or a combination of both.

### SOLUTIONS FOR EVERY IMAGING NEED!



Initials



Numbers



2 Lines of Letters



2 Lines of letters/numbers

## NEW Marker Mates

A new, reusable sticky strip that adheres markers to receptors or equipment. Simply peel off the protective film and apply to the back of your markers. Each pair of Marker Mates will last approximately 30-days under normal use and care. No more need for tape when you can instantly mate your markers!

### NEW AND IMPROVED

- The world’s **strongest x-ray adhesive**
- **3x Stronger** than standard marker adhesives
- Tested up to **6 months of continuous use** in clinical studies
- **Works with every type of marker!**
- Easy to wash, clean and resue
- **Reduces the spread of infections and disease**

|          |            |            |
|----------|------------|------------|
| #MM-XRAY | #MM-XRAY10 | #MM-XRAY25 |
| 1 pair   | 10 pair    | 25 pair    |
| \$3.75   | \$35.00    | \$90.00    |

Save money and order in bulk today!

|             |             |             |
|-------------|-------------|-------------|
| #MM-XRAY100 | #MM-XRAY250 | #MM-XRAY500 |
| 100 pair    | 250 pair    | 500 pair    |
| \$350.00    | \$975.00    | \$1750.00   |



## Elite Style

Elite markers have the most DURABLE aluminum casing. These markers provide the absolute best in QCI. Easily identifiable. RED for "R" markers and misc. words / BLUE for "L" markers.



**#1E \$22.00 ea. set**  
R & L - 5/8"  
2 initials - 3/8" or 3 initials - 1/4"  
Without initials, order:  
#4E @ \$14.00/set



**#7E \$25.00 ea. set**  
R & L - 1"  
2 initials - 3/8" or 3 initials - 1/4"  
Without initials, order:  
#5E @ \$16.00/set



**#11EN \$25.00 ea. set**  
Neonatal Markers R & L is 3/16" and comes with 2 initials or numbers that are 1/8".  
The overall size of the markers is 5/8" tall and 3/4" wide.



**#8E \$25.00 ea. set**  
**NEW** Elite PLUS  
R & L - 5/8" Comes with 2-3 initials per line - 1/4"



**#TA-137 \$35.00 ea. set**  
R & L is 1/2". 2 initials - 1/4"  
**NEW** Without initials, order: **#TA-18** \$29.00/set



**#2E \$27.00 ea. set**  
RIGHT & LEFT - 1/2". 2-3 initials - 1/4"  
Without initials, order:  
#122E @ \$22.00/set



**#6EB \$27.00 ea. set**  
R & L - 1/2", arrow - 1". 2-3 initials - 1/4"  
Without initials, order:  
#6EA @ \$20.00/set



**#A-3 \$9.00 each**  
Arrow - 1" Elite Style

Hundreds of custom combinations available!

## Identifier Style

Identifier markers have high-impact polystyrene casing. Enhances quality control with fewer repeat exams. Provides basic, yet personalized image identification.



**#TA-1 \$20.00 ea. set**  
R & L - 5/8"  
2 initials - 3/8" or 3 initials - 1/4"  
Without initials, order:  
#TA-4 @ \$13.00/set



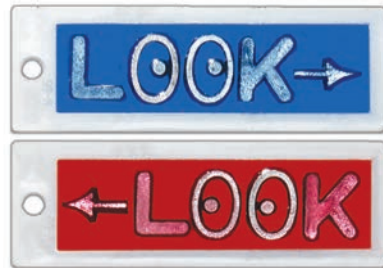
**#TA-7 \$24.00 ea. set**  
R & L - 1"  
2 initials - 3/8" or 3 initials - 1/4"  
Without initials, order:  
#TA-5 @ \$14.00/set



**NEW #TA-8 \$24.00 ea. set**  
R & L is 5/8", and comes with  
2 or 3 initials per line- 1/4".



**#TA-2 \$26.00 ea. set**  
Right & Left - 1/2", 2 or 3 initials - 1/4"  
Without initials, order: #TA-122 @ \$22.00/set



**#TA-LK \$22.00 ea. set**  
Look Right / Look Left  
Arrow + "LOOK" - 1/2"



**#TA-9 \$24.00 ea. set**  
R & L is 1", and comes  
with up to 3 initials 3/16".



**#TA-002 \$20.00 ea. set**  
R & L - 5/8"  
2 initials - 3/8" or 3 initials - 1/4"  
Without initials, order:  
#TA-001 @ \$13.00/set



**#TA-A3 \$7.00 each**  
Arrow - 1" Identifier Style

Hundreds of custom combinations available!

# Position Indicator Markers

Beads Indicate Patient Position

Our **MOST** popular Position Indicator Marker available in a variety of colors. Mix and match to make your work day fun!  
**\$32.00 ea. set with initials**



**#TA-13 \$32 ea. set**  
 Elite Style R & L - 5/8"  
 2 initials - 3/8" or 3 initials - 1/4"  
 Without initials, order:  
 #TA-14 @ \$27.00/set



**#TA-13-GP**



**#TA-13-CG**



**#TA-13-PK**



**#TA-13-BK**



**#TA-13-GPK**



**#TA-13-TR**



**#TA-13-CY**



**#TA-13-CO**



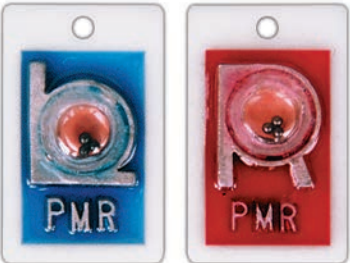
**#TA-13-PW**



**#TA-GPW**



**NEW #TA-11 \$32 ea. set**  
 Elite Style R & L - 5/8"  
 2 initials - 3/8" or 3 initials - 1/4"  
 Without initials, order:  
 #TA-12 @ \$25.00/set



**#TA-17 \$37.00 ea. set**  
 Identifier Style R & L - 7/8" Position  
 2 initials - 3/8" or 3 initials - 1/4"



**#TA-16 \$32.00 ea. set**  
 Identifier Style R & L - 7/8" Position  
 No initials

## Personal Touch Colors & Shapes

Make your mark with our customizable styles!

\$20.00 ea. set

R & L - 5/8"

2 initials - 3/8" or 3 initials - 1/4"



BLACK SOLID #PT-BK



BROWN SOLID #PT-BR



GREEN SOLID #PT-CG



LIGHT BLUE #PT-PW



YELLOW SOLID #PT-CY



ORANGE SOLID #PT-CO



PURPLE SOLID #PT-CP



PINK SOLID #PT-PK

### Mix and Match Your Favorite Colors!

Want to add some "fun" to your work day? Mix and match colors. It's easy! Choose the color from above and "L" or "R".

For example: (for technologist Terri Andrews)

**PT-BK/L** is a **Black Left** Marker with initials "TA"

**PT-CO/R** is an **Orange Right** Marker with initials "TA"



PT-BK/L

PT-CO/R

## Personal Touch Glitter

Time to make your mark with our unlimited custom combinations!



**RED/BLUE GLITTER**  
**#PT-GR** \$20.00 ea. set  
 R & L - 5/8"  
 2 initials - 3/8" or 3 initials - 1/4"



**PURPLE GLITTER**  
**#PT-GP** \$20.00 ea. set  
 R & L - 5/8"  
 2 initials - 3/8" or 3 initials - 1/4"



**LIGHT BLUE GLITTER**  
**#PT-GB** \$20.00 ea. set  
 R & L - 5/8"  
 2 initials - 3/8" or 3 initials - 1/4"



**YELLOW GLITTER**  
**#PT-YG** \$20.00 ea. set  
 R & L - 5/8"  
 2 initials - 3/8" or 3 initials - 1/4"



**NEW WHITE GLITTER**  
**#PT-GWH** \$20.00 ea. set  
 R & L - 5/8"  
 2 initials - 3/8" or 3 initials - 1/4"



**PINK GLITTER**  
**#PT-GA** \$20.00 ea. set  
 R & L - 5/8"  
 2 initials - 3/8" or 3 initials - 1/4"



**ORANGE GLITTER**  
**#PT-GO** \$20.00 ea. set  
 R & L - 5/8"  
 2 initials - 3/8" or 3 initials - 1/4"



**GREEN GLITTER**  
**#PT-GG** \$20.00 ea. set  
 R & L - 5/8"  
 2 initials - 3/8" or 3 initials - 1/4"



**TROPICAL FISH**  
**#PT-FRB**  
 \$22.00 ea. set



**SKULLS**  
**#PT-SKW**  
 \$22.00 ea. set



**SKULLS**  
**#PT-SKW-BO**  
 \$22.00 ea. set

## Image Scaling Marker Device

Scaling a digital image is mandatory in order to assure the highest level of diagnostic accuracy. It is critical to know the difference between the size of the anatomy shown on a digital monitor as compared to the actual anatomy. An easy to use, easy to clean, easy to understand calibration tool is a must, and a Rollr Precision Marker is the answer!

The patent pending radiolucent sphere holder and a size indicator sphere come together to allow perfect visibility of the sphere on the image as taken from any direction. A millimeter marker on the sphere holder indicates the size of the sphere that is being used.

The suction cup base allows the unit to be firmly secured to a flat table or a vertical wall bucky board that is close to the patient. The small footprint of the suction cup does not interfere with the patient, the technologist, nor limit its use.

The flexible gooseneck arm is perfect for positioning the calibration sphere as close as possible to the critical anatomy. The arm is covered with a smooth, crevice-free surface that allows for easy sanitation.

The autoclavable unit comes with the suction stand and one calibration sphere. Additional spheres can be bought separately in packs of six (6).



**Full unit with 25mm sphere**

#A25DR \$840.00/ea.

**Full unit with 25.4mm (1-inch) sphere**

#A24DR \$718.00/ea.

**Full unit with 30mm sphere**

#A30DR \$725.00/ea.



**Replacement 25mm sphere (set of 6)**

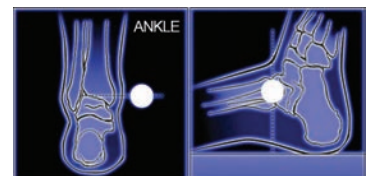
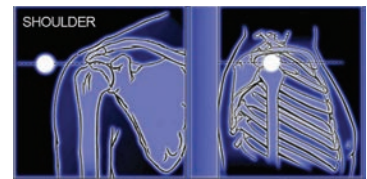
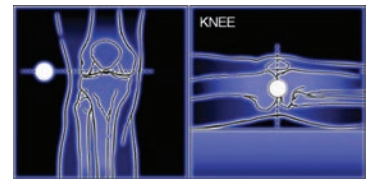
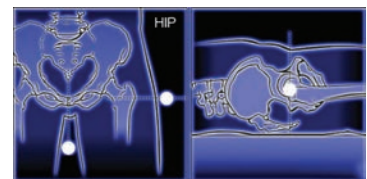
#S25DR \$259.00/set

**Replacement 25.4mm sphere (set of 6)**

#S24DR \$259.00/set

**Replacement 30mm sphere (set of 6)**

#S30DR \$575.00/set





## CM Ruler Markers

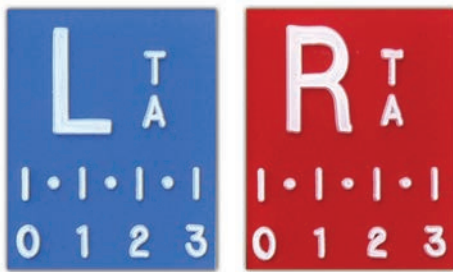
The personalized R & L marker sets or the stand alone 3cm ruler are specifically designed for Teleradiology, CR and DR Imaging, where the image-size does not always match the life-size anatomy. Place a marker on the Receptor Plate and capture the radiographed anatomy. The image of the unique 3cm ruler gives an immediate visual and measureable cue as to the size of the screen image compared to the life size anatomy. Each marker has a lead 3cm ruler. Color coded: L-Blue, R-Red. High density lead characters.

Elite style R&L Markers with patient indicator and 1 centimeter ruler for immediate visual and measurable cue to the size of image captured.

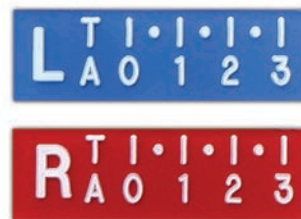


**NEW #TA-40DR** \$48.00 ea. set  
Ruler Style R & L - 5/8"  
2 initials - 3/8"

**NEW #TA-50DR** \$48.00 ea. set  
Ruler Style R & L - 1/2"  
3 initials or numbers - 1/8"



**#1DR** \$50.00 ea. set  
Ruler Style R & L - 3/4"  
2 or 3 initials - 1/4"



**#2DR** \$50.00 ea. set  
Ruler Style R & L - 1/2"  
2 or 3 initials - 1/4"



**#3DR** \$30.00 ea.  
Ruler only

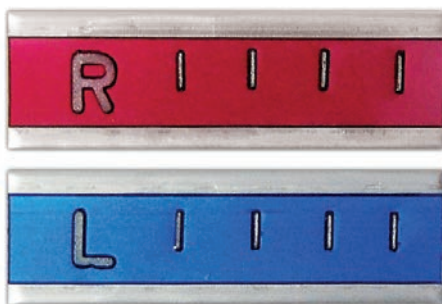
## Wafer-Thin Digital Imaging Markers

Super Thin for SlimBucky Clearance

Perfect for equipment (CR, DR, etc.) with very thin bucky clearance. Exceptionally thin markers: <math>\lt; 3/32\text{''}</math> (2mm). Copper filtered for a broad range of KV. Elite style and color-coded.

## Radi-O-Paque Extremity Rulers

Sturdy 1 1/4" wide x 1/8" thick. High density lead letters. Brilliant YELLOW color. Spaced in 0.5cm increments.



**#WTS-DR** \$30.00 ea. set  
Ruler Style R & L with  
3cm spacing

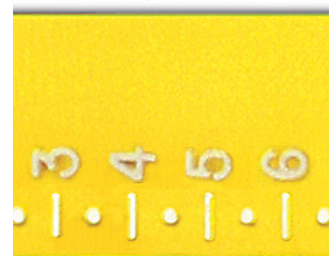
Other  
Wafer-Thin  
markers on the  
next page



115cm  
**#CPT-R115**  
\$299.00/ea.

45cm  
**#CPT-R45**  
\$195.00/ea.

Enlarged View



## Wafer Thin

### Super Thin for SlimBucky Clearance

Perfect for newer equipment (CR, DR, etc.) with thin bucky clearance. Exceptionally thin markers: <math>\lt; 3/32''</math> (2mm). Copper filtered for a broad range of KV. Elite style and color-coded.



**#WTS-6B** \$32.00 ea.set  
R & L - 3/8" 2 initials - 3/16"  
Without initials (with arrow), order:  
#WTS-6A @ \$21.00/set



**#WTS-6C** \$32.00 ea.set  
R & L - 3/8" 2 initials - 3/16"  
Without initials, order:  
#WTS-6D @ \$21.00/set



**#WTS-1** \$32.00 ea.set  
R & L - 3/8" 2 initials - 3/16"  
Without initials, order:  
#WTS-4 @ \$21.00/set



**#WTW-A3 (1/2" arrow)**  
\$10.00

## Oncology, CT and CR/DR

### Super Thick for High Radiation

1/4" super thick, high-density lead letters. Designed for Oncology and Industry, and other applications. Elite style markers, color-coded and Techno-Aide tough. Vinyl and epoxy encased for extended life!

**WARNING:**  
The Oncology markers are 1/4" thick and will NOT fit in most low clearance bucky trays.



**#RO-107B** \$32.00 ea.set  
R & L - 3/4" 2 initials - 3/8"  
Without initials, order:  
#RO-107A @ \$24.00/set

| cat.# (3/4") | description   | price   |
|--------------|---------------|---------|
| ROW-01       | single letter | \$12.00 |
| ROW-23       | 2-3 letters   | \$15.00 |
| ROW-45       | 4-5 letters   | \$18.00 |
| ROW-67       | 6-7 letters   | \$22.00 |
| ROW-80       | 8+ letters    | \$25.00 |



Ex.: ROW-23 3/4" letters (1/4" thick)

### WORD CHOICE EXAMPLES

| 2-3 Letters |     | 4-5 Letters |        | 6-7 Letters |         | 8 or more Letters |                   |
|-------------|-----|-------------|--------|-------------|---------|-------------------|-------------------|
| AP          | LPO | FLAT        | ERECT  | AP ERECT    | SUPINE  | ANTERIOR          | POST EVAC         |
| PA          | MAG | FLEX        | HOURS  | CLOSED      | DELAYED | COMPARISON        | POST VOID         |
| ANT         | MIN | INSP        | PRE OP | INT ROT     | FLEXION | DECUBITUS         | SEMI ERECT        |
| EXP         | OBL | LEFT        | PRONE  | MOBILE      | LATERAL | EXTENSION         | STANDING          |
| EXT         | RAC | OPEN        | PUREE  | P EVAC      | MINUTES | INFUSION          | VALSALVAR         |
| INT         | LOA | POST        | RIGHT  | POST OP     | OBLIQUE | INJECTION         | VERTICLE W/WEIGHT |
| KUB         | 25  | TOMO        | SCOUT  | RECUMB      | SUNRISE | INVERSION         | WEIGHT BEARING    |
| LAO         | 600 | DECUB       | 60 MIN | STRESS      | UPRIGHT | PORTABLE          | WT BEARING        |

## Copper Filtered

Filtered for High KV Exams

Our copper filtered markers are specifically engineered for High KV. Crafted with high density lead letters. Available in ELITE or IDENTIFIER. Color-coded, impact resistant.



**#COP-1** \$47.00 set ELITE  
(2 sets of 1E markers: 1 set with copper filter, 1 set without.)



**#COP-2** \$45.00 set ELITE  
R & L - 1/2", 2-3 initials - 1/4"  
(Filtered & unfiltered on the same marker.)



**#TA-C02** \$41.00 set  
R & L - 1/2", initials 1/4" - 1/2"  
Marker includes copper filtration



**#TA-C01** \$43.00 set  
(2 sets of TA-1 markers: 1 set with copper filter, 1 set without.)

## Copper Filter Add-On Available!

Copper filtering add-on only \$4 per set

Copper filtering can be added to any marker type for an additional \$4.00 per set. Copper filtering is specifically engineered for High KV scans. Mix and match colors and types, then simply add copper filtering to your customization. **cat.#Copper**



## Standard Thin Clipper

Constructed of high strength Kydex™. Extra thin profile, double-sided, 1 7/8" wide. R and L: 3/4", with or without initials. 2 Initials: 3/8"; 3 initials or words: 1/4".

#CPP-40 (with initials) \$28.00

#CPP-42 (no initials) \$25.00



Side View

## Elite Clippers

Both R & L are on one double clip. Durable Stainless Steel clips. Color-coded: R side-Red / L side-Blue.

### Double Personalized

#CP-35  
\$30.00 ea.  
(2-3 initials)



### Portable & Position Double Clippers

#CP-13  
(with initials)  
\$37.00



#CP-36  
(with initials)  
\$37.00



#CP-14  
(no initials)  
\$30.00

#CP-37  
(no initials)  
\$30.00

## Gridcap Thin Clipper

Designed to fit DR, CR receptors with gridcap. Constructed of high strength Kydex™. Extra thin profile, double-sided, 1 7/8" wide. R and L: 3/4", with or without initials. 2 Initials: 3/8"; 3 initials: 1/4".

#CPP-60 (with initials)

#CPP-61 (no initials)

\$38.00 ea.



## Stencil Clipper

High quality plated steel construction. Stenciled, non-personalized right and left identifiers

#XSCP-10  
\$15.00 ea.



## Word Choices, Pricing and Accessories

### Wafer Thin

(1/4" letters x <332"thin)



| cat.#  | description   | price   |
|--------|---------------|---------|
| WTW-01 | single letter | \$13.00 |
| WTW-23 | 2-3 letters   | \$16.00 |
| WTW-45 | 4-5 letters   | \$19.00 |
| WTW-67 | 6-7 letters   | \$22.00 |
| WTW-80 | 8+ letters    | \$25.00 |

### Oncology

(3/4" letters x 1/4" thick)



| cat.#  | description   | price   |
|--------|---------------|---------|
| ROW-01 | single letter | \$12.00 |
| ROW-23 | 2-3 letters   | \$15.00 |
| ROW-45 | 4-5 letters   | \$18.00 |
| ROW-67 | 6-7 letters   | \$22.00 |
| ROW-80 | 8+ letters    | \$25.00 |

### Wall Boards

Walnut grain w/brass hooks.



| cat.# | description   | price    |
|-------|---------------|----------|
| HK-32 | 32 Hook Board | \$100.00 |
| HK-16 | 16 Hook Board | \$80.00  |
| HK-8  | 8 Hook Board  | \$70.00  |
| HK-50 | 50 Hook Board | \$135.00 |

### ELITE Words (aluminum casing)



| description   | example  | cat.# | price   | cat.# | price   |
|---------------|----------|-------|---------|-------|---------|
| single letter | 3        | 2E-Y  | \$9.00  | 2E-Z  | \$10.00 |
| 2-3 letters   | EXT      | 3E-Y  | \$11.00 | 3E-Z  | \$13.00 |
| 4-5 letters   | 25 MIN   | 4E-Y  | \$13.00 | 4E-Z  | \$16.00 |
| 6-7 letters   | STRESS   | 5E-Y  | \$15.00 | 5E-Z  | \$19.00 |
| 8+ letters    | PORTABLE | 6E-Y  | \$18.00 | 6E-Z  | \$22.00 |

### IDENTIFIER Words (polystyrene casing)



| description   | example  | cat.# | price   | cat.# | price   |
|---------------|----------|-------|---------|-------|---------|
| single letter | 3        | 2TA-Y | \$8.00  | 2TA-Z | \$9.00  |
| 2-3 letters   | EXT      | 3TA-Y | \$10.00 | 3TA-Z | \$11.00 |
| 4-5 letters   | 25 MIN   | 4TA-Y | \$12.00 | 4TA-Z | \$13.00 |
| 6-7 letters   | STRESS   | 5TA-Y | \$14.00 | 5TA-Z | \$15.00 |
| 8-15/8-10     | PORTABLE | 6TA-Y | \$17.00 | 6TA-Z | \$18.00 |

### General Marker Set

Elite  
#GME-60  
\$575

Identifier  
#GMI-65  
\$525.00



Identifier Set shown (Board: 12" x 15")  
3/8" letters / 1/2" numbers



### Word Choice Examples

| 2-3 Letters |     | 4-5 Letters |        | 6-7 Letters |         | 8 or more Letters |                   |
|-------------|-----|-------------|--------|-------------|---------|-------------------|-------------------|
| AP          | LPO | FLAT        | ERECT  | AP ERECT    | SUPINE  | ANTERIOR          | POST EVAC         |
| PA          | MAG | FLEX        | HOURS  | CLOSED      | DELAYED | COMPARISON        | POST VOID         |
| ANT         | MIN | INSP        | PRE OP | INT ROT     | FLEXION | DECUBITUS         | SEMI ERECT        |
| EXP         | OBL | LEFT        | PRONE  | MOBILE      | LATERAL | EXTENSION         | STANDING          |
| EXT         | RAC | OPEN        | PUREE  | P EVAC      | MINUTES | INFUSION          | VALSALVAR         |
| INT         | LOA | POST        | RIGHT  | POST OP     | OBLIQUE | INJECTION         | VERTICLE W/WEIGHT |
| KUB         | 25  | TOMO        | SCOUT  | RECUMB      | SUNRISE | INVERSION         | WEIGHT BEARING    |
| LAO         | 600 | DECUB       | 60 MIN | STRESS      | UPRIGHT | PORTABLE          | WT BEARING        |

## Cover Tab Stickers

Ideal for coding mismarked or unmarked film. Color coded: L-Blue / R-Red. Self-adhesive backing. 1 1/4" diameter with square for initials. Includes 250 stickers per box. Each box is an individual letter.

| Cat.# | Box   | Price   | Per Box     |
|-------|-------|---------|-------------|
| TAB-L | 1 Box | \$18.00 | 250 per box |
| TAB-R | 1 Box | \$18.00 | 250 per box |



SAVE with more! Large quantity discounts apply!

## Marking Pens

Highlights points of interest on a film. Wax markers resist smudging, but are not permanent. NOT to be used in place of lead markers. NOT a legally acceptable marking method.

**Order each item per number of packs.**

Example: 2ea. #MPY-11

(will be shipped with 10 yellow pens.)



### PENS (5 per pack)

| cat.#  | color         | price/pk   |
|--------|---------------|------------|
| MPY-11 | Yellow        | \$30.00/pk |
| MPR-12 | Red           | \$30.00/pk |
| MPW-13 | White         | \$30.00/pk |
| MPA-19 | 2-Y, 2-R, 1-W | \$30.00/pk |



### REFILLS (72 per pack)

| cat.#  | color  | price/pk   |
|--------|--------|------------|
| MPY-21 | Yellow | \$20.00/pk |
| MPR-22 | Red    | \$20.00/pk |
| MPW-23 | White  | \$20.00/pk |

Refills come in pkgs of 72 pieces.

MPA-19 Example Assorted Pack

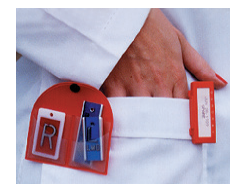
## Marker Keeper

Convenient four-pouch vinyl holder for markers. Handy clip attaches the Marker Keeper to belt, lapel, pocket, etc. Keeps markers in easy reach for quick retrieval.

| cat.#  | color         | price               |
|--------|---------------|---------------------|
| MKR-11 | Red           | \$9.90              |
| MKB-12 | True Blue     | No Longer Available |
| MKG-13 | Green         | \$9.90              |
| MKY-14 | Yellow        | \$9.90              |
| MKC-15 | Clear         | No Longer Available |
| MKA-19 | *Assorted (4) | \$35.00             |

(\* Assorted set varies)

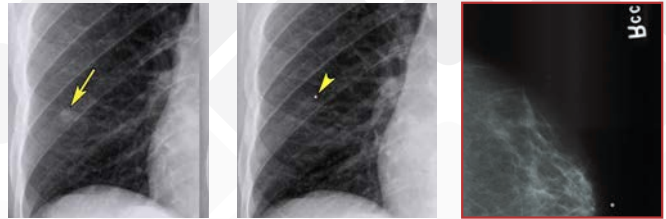
Choose Your Own Color!



Limited quantities available. Get them while they last!

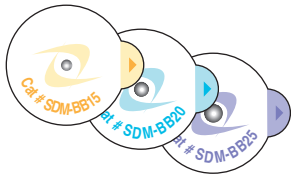
## Skin Markers for General X-Ray, Mammography, CT and Oncology

**GENERAL IMAGING:** used to identify areas of pain or trauma, soft tissue masses, to document points of entry and exit sites, or mark prominent nipples for identification of nipple shadows on chest x-rays.



### Skin Dots

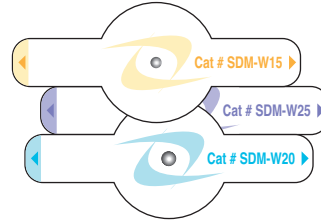
Artifact/nipple identifier. Helps eliminate repeat exams. Lead-free. Easy-Peel tab.



| cat.#     | BB size     |
|-----------|-------------|
| SDM-BB15  | 1.5mm       |
| SDM-BB20  | 2.0mm       |
| SDM-BB25  | 2.5mm       |
| 1-5 Boxes | \$79.00     |
|           | 100 per box |

### Skin Wings

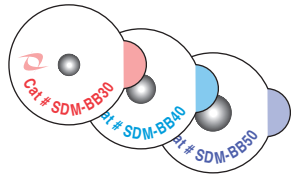
Artifact/nipple identifier. Extra support for larger, more prominent nipples. Lead-free. Easy-Peel tab.



| cat.#     | BB size     |
|-----------|-------------|
| SDM-W15   | 1.5mm       |
| SDM-W20   | 2.0mm       |
| SDM-W25   | 2.5mm       |
| 1-5 Boxes | \$79.00     |
|           | 100 per box |

### Skin Dots (Rad/Onc)

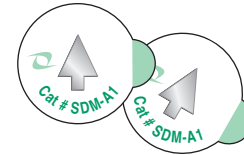
Lead-free artifact identifier. Larger BBs for Radiology and Oncology. Easy-Peel tab.



| cat.#     | BB size    |
|-----------|------------|
| SDM-BB30  | 3.0mm      |
| SDM-BB40  | 4.0mm      |
| SDM-BB50  | 5.0mm      |
| 1-5 Boxes | \$149.00   |
|           | 50 per box |

### Skin Arrow (Rad/Onc)

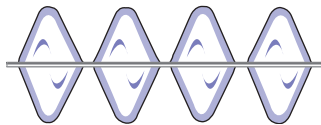
Lead-free arrow pointer. Highlights areas of interest for Radiology and Oncology. Easy-Peel tab.



| cat.#     | BB size     |
|-----------|-------------|
| SDM-A1    | 7.0mm       |
| 1-5 Boxes | \$125.00    |
|           | 100 per box |

### Skin Line/Scar Marker

Lead-free scar identifier. Line contours to complex scar tissue. Flexible adhesive tabs; no scissors required.



| cat.#     | BB size                             |
|-----------|-------------------------------------|
| SDW-SS612 | 1.0mm                               |
| 1-5 Boxes | \$95.00                             |
|           | 100 per box<br>(120"/305cm per box) |



## Economy Nipple-Artifact Markers

Encapsulated 2mm lead ball. Used to mark nipple, lesion, scar, artifact, etc. Neutral color, peel-off, self-adhesive backing. Non-sterile. 100 markers mounted on ten convenient strips. (This product contains lead)

#LNA-20  
\$52.00



## 2D/3D Breast Tomo Markers

Used for Digital Breast Tomosynthesis. Low density markers specifically designed to show up clearly when “in slice” and minimize the “slinky” artifact when they’re “out of slice.”



### Mole Marker

Lead-free mole marker.  
Easy-Peel tab.

cat.# **SDG-MSD3**  
\$85.00 / box of 100  
Hole Size: 1/2"

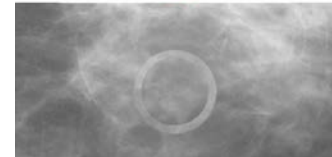
SDG-MSD3



### Palpable Mass Marker

Lead-free Mass skin marker.  
Easy-Peel tab.

cat.# **SDM-TSD3**  
\$85.00 / box of 100



### Non-Palpable Mass Marker

Lead-free arrow skin marker.  
Easy-Peel tab.

cat.# **SDM-ASD3**  
\$85.00 / box of 100



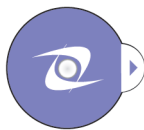
### Skin Line/Scar Marker

Lead-free line skin marker.  
Repeated adhesive tabs allow accurate bending to scar outline.

cat.# **SDW-SSD3**  
\$102.00 / roll of 120"  
Line: 1mm

## Digital Mammography Skin Markers

BB size  
2.3mm



### Digital Dot

Lead-free nipple identifier. Highlights areas of interest for digital and analog imaging. Easy-Peel tab.

Cat.#  
**SDM-BB23** \$79.00  
1-5 Boxes (100 per box)

## CT Skin Markers

BB size  
2.3mm



### CT Dot: 2.3mm

Lead-free 2.3mm marker. Highlights areas of interest for Radiology and CT. Easy-Peel tab.

Cat.#  
**SDM-CT1** \$105.00  
1-5 Boxes (50 per box)

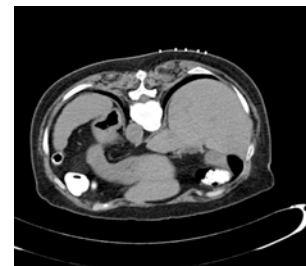
BB size  
4.0mm



### CT Dot: 4.0mm

Lead-free 4.0mm marker. Highlights areas of interest for Radiology and CT. Easy-Peel tab.

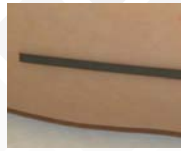
Cat.#  
**SDM-CT2** \$105.00  
1-5 Boxes (50 per box)



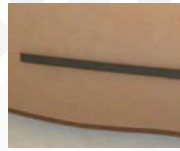


## CT Skin Markers

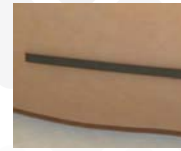
Opaque line skin markers are perfect for CT field edge markings and nearly all CT marking applications. RT Simulation, Treatment Planning and Diagnostic Radiography. Flat marker is perforated every 2" yielding 125 markers per box. Lead free and disposable.



cat.# SDW-CT05  
\$220.00 (0.5mm)  
138 per box



cat.# SDW-CT10  
\$220.00 (1mm)  
132 per box



cat.# SDW-CT15  
\$220.00 (1.5mm)  
125 per box



cat.# SDM-RT03  
\$208.00 (2mm)  
130 per box

## Multi-Modality Skin Markers

Provides an accurate reference point for CT, MRI, Therapy, Nuc Med, and PET procedures. Does not indent into the tissue or produce unwanted artifacts. These versatile markers can be used for marking masses, pain location, biopsies, or other areas of interest. Perfect for any modality with a clear accurate reference point. Easy to secure in place. Easy to remove. Manufactured with a medical grade adhesive. MRI safe. Disposable. 50 per box.



### CT / MRI

No center hole; appears as bright object on CT and MRI scans. Also highlights areas of interest for radiology and mammography.

### cat.# MM3007

1-5 Boxes \$278.00  
50 per box



### CT / MRI / THERAPY / RADIOLOGY

2mm center hole suitable for conventional hypodermic needle. Highlights area of interest for Oncology and Radiology.

### cat.# MM3005

1-5 Boxes \$245.00  
50 per box



### CT / MRI / NUC Med / PET

2mm center hole suitable for injection of radioisotope. Highlights area for Nuc. Med., PET, CT and MRI.

### cat.# MM3003

1-5 Boxes \$245.00  
50 per box

## MRI Markers

### CT / MRI

Easily identifiable. Clearly and accurately communicates the area of interest or concern to the radiologist. Artifact free! Does not indent the skin, preventing a compromised image. 100% Latex-Free and hypoallergenic making it safe for patients. Markers are MR safe.



### cat.# SDM-MR2

1-5 Boxes \$182.00  
**3/4" capsule**  
40 per box



### cat.# SDM-MR3

1-5 Boxes \$152.00  
**1 1/4" capsule**  
40 per box



## Lead Characters

If you have any questions about the size characters you need or are looking for additional sizes and styles, please call our customer service department, or mail us a sample so that we may send you exactly what you're looking for.



### Unmounted Lead Characters

| style      | (3/16")     | (1/4")       | (3/8")       | (1/2")       | (5/8")          | (1" R&L only) | (1" arrow)   |
|------------|-------------|--------------|--------------|--------------|-----------------|---------------|--------------|
| FLAT FACE  | XTUF-36 .50 | XTUF-14 .50  | XTUF-38 .50  | XTUF-12 .60  | XTUF-58 .60     | XTUF-01 1.00  | X            |
| DEEP BLOCK | X           | XTUB-14 .90  | XTUB-38 1.00 | XTUB-12 1.00 | (see Flat Face) | X             | X            |
| ARROWS     | X           | XTUA-14 1.00 | X            | XTUA-12 .80  | X               | X             | XTUA-01 1.00 |



Flat Face | Deep Block | Arrow

"Loose" lead letters & numbers.

### Individual Mounted Characters (Flat Face)

| cat.#     | lead/plastic size | price | comments                              |
|-----------|-------------------|-------|---------------------------------------|
| XTSF-3658 | 3/16" on 5/8"     | .80   | Fits: LLH-58, LLH-2, LLH-3, Veri-Thin |
| XTSF-3634 | 3/16" on 3/4"     | .80   | Fits: Legal (regular)                 |
| XTSF-1458 | 1/4" on 5/8"      | .80   |                                       |
| XTSF-1434 | 1/4" on 3/4"      | .80   |                                       |
| XTSF-1478 | 1/4" on 7/8"      | .80   | Fits: Eclipse, Perfection             |
| XTSF-1234 | 1/2" on 3/4"      | .80   |                                       |
| XTIF-3658 | 3/16" on 5/8"     | .80   | Fits: Ideal (special offset mounting) |



Characters are mounted on CLEAR flat plastic tabs to fit a variety of letter holders.

### Flat Surface Mounted Words (Flat Face)

| description        | example  | cat.#         | price | cat.#        | price | cat.#        | price | cat.#        | price |
|--------------------|----------|---------------|-------|--------------|-------|--------------|-------|--------------|-------|
| single letter      | 3        | XVFW-0136     | .1.00 | XVFW-0114    | .1.00 | XVFW-0112    | .1.00 | XVFW-0101    | 2.00  |
| 2-3 letters        | EXT      | XVFW-2336     | 2.00  | XVFW-2314    | 2.00  | XVFW-2312    | 2.00  | XVFW-2301    | 4.00  |
| 4-5 letters        | 25 MIN   | XVFW-4536     | 4.00  | XVFW-4514    | 4.00  | XVFW-4512    | 4.00  | XVFW-4501    | 7.00  |
| 6-7 letters        | STRESS   | XVFW-6736     | 6.00  | XVFW-6714    | 6.00  | XVFW-6712    | 6.00  | XVFW-6701    | 9.00  |
| 8+ letters         | PORTABLE | XVFW-8036     | 7.00  | XVFW-8014    | 7.00  | XVFW-8012    | 7.00  | XVFW-8001    | 11.00 |
| Lead/Plastic Sizes |          | 3/16" on 3/4" |       | 1/4" on 3/4" |       | 1/2" on 3/4" |       | 1" on 1 1/2" |       |



Words made from Mounted Letters glued to the surface of a single CLEAR vinyl strip.

## Lead Letter Case

Injection Molded Box. 36 scoop-bottom compartments (for A-Z and 0-9). Side compartment for holder.

#XSLC-36  
\$44.00



Dimensions: 13" x 3" x 13" (1.40lbs)

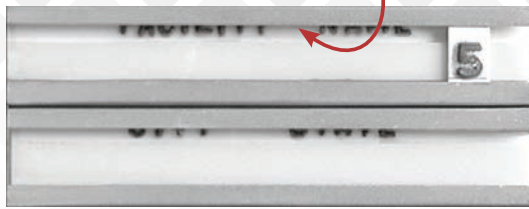
## Ideal Cushion Marker

Double channel with cushions; imprint in the upper section of each channel.

**#XSIC-21 \$75.00 ea.**

Holder only. 3 1/2" x 15/16"

Viewable Imprint under Cushion



**#XSIC-22 \$170.00 ea set**

Complete Set Includes:

- 1ea. holder
  - 2ea. A-Z
  - 4ea. 0-9
  - 2ea. A, E, I, O, U
  - 1ea. 36-letter case
- (Replacement characters: 3/16" on 5/8" plastic tabs, offset.  
Reorder #XTIF-3658)

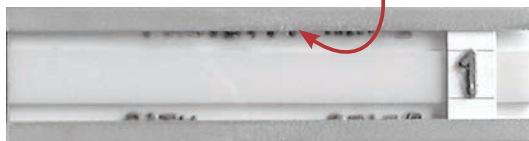
## Eclipse Cushion Marker

Single channel with cushion; imprint above and below the centerline.

**#XSEC-11 \$59.00 ea.**

Holder only. 3 1/2" x 15/16"

Viewable Imprint under Cushion



**#XSEC-12 \$120.00 ea set**

Complete Set Includes:

- 1ea. holder
  - 2ea. R, L
  - 4ea. 0-9
  - 1ea. 36-letter case
- (Replacement characters: 1/4" on 7/8" plastic tabs.  
Reorder #XTSF-1478)

## Legal Marker

Double aluminum channels: imprint between the two channels.

**#XSLG-21 \$70.00 ea.**

Holder only. 3 1/2" x 1 5/8"



**#XSLG-22 \$150.00 ea set**

Complete Set Includes:

- 1ea. holder
  - 2ea. A-Z
  - 4ea. 0-9
  - 2ea. A, E, I, O, U
  - 1ea. 36-letter case
- (Replacement characters: 3/16" on 3/4" plastic tabs;  
Reorder #XTSF-3634)

## Veri-Thin Legal

Double aluminum channels; imprint down and in between the two channels. Great for Bucky Trays!

**#XSVL-21 \$70.00 ea.**

Holder only. 3 1/2" x 11 3/16"



**#XSVL-22 \$150.00 ea set**

Complete Set Includes:

- 1ea. holder
  - 2ea. A-Z
  - 4ea. 0-9
  - 2ea. A, E, I, O, U
  - 1ea. 36-letter case
- (Replacement characters: 3/16" on 5/8" plastic tabs.  
Reorder #XTSF-3658)

## Perfection

Single aluminum channel; imprint above and below the channel.

**#XSPF-11 \$60.00 ea.**

Holder only. 3 1/2" x 15/16"



**#XSPF-12 \$120.00 ea set**

Complete Set Includes:

- 1ea. holder
  - 2ea. R, L
  - 4ea. 0-9
  - 1ea. 36-letter case
- (Replacement characters: 1/4" on 7/8" plastic tabs.  
Reorder #XTSF-1478)

|                |  |
|----------------|--|
| Contact Name   |  |
| Address        |  |
| City/State/Zip |  |
| Phone          |  |
| Email          |  |



|     | Technologist Name | Initials | Right Color | Left Color | Marker Style |
|-----|-------------------|----------|-------------|------------|--------------|
| EX. | TERESA QUIRANTE   | T J Q    | RED         | BLUE       | TA-1         |
| 1   |                   |          |             |            |              |
| 2   |                   |          |             |            |              |
| 3   |                   |          |             |            |              |
| 4   |                   |          |             |            |              |
| 5   |                   |          |             |            |              |
| 6   |                   |          |             |            |              |
| 7   |                   |          |             |            |              |
| 8   |                   |          |             |            |              |
| 9   |                   |          |             |            |              |
| 10  |                   |          |             |            |              |
| 11  |                   |          |             |            |              |
| 12  |                   |          |             |            |              |
| 13  |                   |          |             |            |              |
| 14  |                   |          |             |            |              |
| 15  |                   |          |             |            |              |
| 16  |                   |          |             |            |              |
| 17  |                   |          |             |            |              |
| 18  |                   |          |             |            |              |
| 19  |                   |          |             |            |              |
| 20  |                   |          |             |            |              |



ADMINISTRATION/MANUFACTURING

7117 Centennial Blvd. Nashville, TN 37209

Orders can be placed online or sent to [orders@techno-aide.com](mailto:orders@techno-aide.com)

For official Quotes: [quotes@techno-aide.com](mailto:quotes@techno-aide.com)

Any questions can be directed to [customerservice@techno-aide.com](mailto:customerservice@techno-aide.com)

P: 800.251.2629 or 615.350.7030

F: 800.554.6275 or 615.350.7879

[techno-aide.com](http://techno-aide.com)