



Patient Handling

2019
PRODUCT
GUIDE

CHECK OUT WHAT'S NEW FOR 2019

2019 will be another year of innovation for Techno-Aide. With a greater focus on providing a safer working environment, our clients will see an assortment of new products and some incredible upgrades to our existing line. With almost too many updates to list, here are a few key innovations that are a must for the new year!

Updated Head Paddle

The perfect solution to keep your patients head comfortable and steady, these vinyl discs include a comfort grip and coated foam cushions. Now featuring a new black, anti-microbial, 4 way stretch fabric for a more comfortable patient experience.

Found on page 4

New Radiology Weight-Bearing Step Platform

A radiology positioning stool with a 500 lb weight capacity and natural wood finish. X-ray cassette slot built for film or digital panels makes this platform a perfect addition to any radiology department.

Found on page 7

New Ultrasound Weight-Bearing Platform

Techno-Aide's new step platform ensures accurate exams of the upper and lower leg during venous insufficiency studies and Doppler exams. This platform creates an optimal position for easy ergonomic scanning for a better scanning environment.

Found on page 8

New 3-Step Defecogram Chair

Designed to allow radiography of a patient's bowl movement in radiology rather than the more costly MRI/CT. This three step chair provides physicians with accurate and functional information.

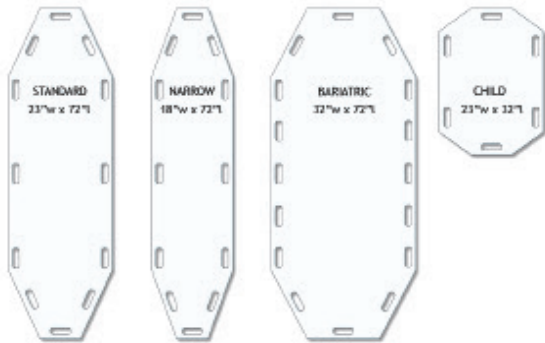
Found on page 13

Regular Transfer Board

Allows safe and efficient transfer of patients for general imaging, MRI, and CT. Semi rigid slick material makes positioning under the patient easy. Transfer boards are radiolucent and can be used in the imaging field. Conveniently located handgrips allow optimal movement. Boards are made of durable high density polyethylene. Color: White. MR safe. Has a 3/16" thickness. These boards ship at Oversize Rates.

REGULAR BOARDS (white)

cat. #	dimensions	description	price
TBS-2372	23"(w) x 72"(l)	standard	\$198.00
TBN-1872	18"(w) x 72"(l)	narrow	\$193.00
TBB-3272	32"(w) x 72"(l)	bariatric	\$294.00
TBH-2332	23"(w) x 32"(l)	half	\$90.00

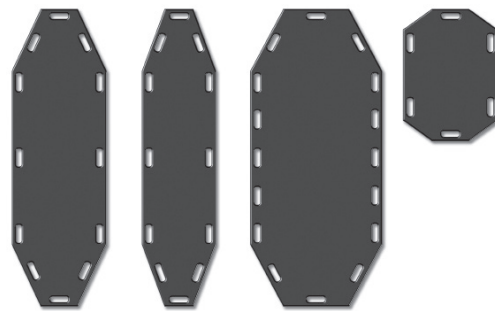


Anti-Static Transfer Board

Anti-static boards are made of UHMW (ultra high molecular weight polyethylene). Transfer boards are radiolucent and can be used in the imaging field. Conveniently located handgrips allow optimal movement. Color: Black. Has a 3/16" thickness. These boards ship at Oversize Rates. MR safe.

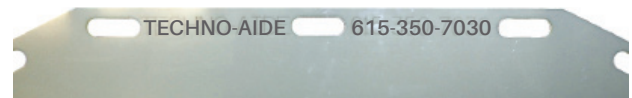
ANTI-STATIC BOARDS (black)

cat. #	dimensions	description	price
TBS-2372AS	23"(w) x 72"(l)	standard	\$588.00
TBN-1872AS	18"(w) x 72"(l)	narrow	\$440.00
TBB-3272AS	32"(w) x 72"(l)	bariatric	\$716.00
TBH-2332AS	23"(w) x 32"(l)	half	\$230.00



Engraved Transfer Option

Personalize your transfer boards for your facility. Each board can be engraved with your name, phone number, etc. to make sure your boards come back to YOU! (call for pricing) **#TBS-ENGRAVE**



Restraint Straps

Super strong 2" nylon webbing. Secure snap buckle closure.



cat.#	girth	description	price ea.
TBR-S72	72"	standard/half	\$40.00
TBR-N60	60"	narrow	\$34.00
TBR-B90	90"	bariatric	\$44.00

Lifting Straps

Convenient nylon straps loop through hand holds. Provides better grip. Provides extra length for better reach. Ships @ 1 lb.

#TBS-ST2
\$34.00/pair



Board Wall Rack

Two 6" pegs are angled to keep board from slipping. Mounting holes are on vertical centers. Steel with white enamel. Ships @ 4 lbs.

#TBR-2P
\$72.00



Portable Blanket Warmer Bags

With AC or 12V Power Supplies

Designed for radiology and CT departments, these specially insulated blanket warmers keep warmed blankets warm. The durable and washable nylon exterior bag features a handy hook and loop closing flap. The removable interior heating elements keep the temperature at a steady 130° - 140°F when plugged into an optional, low voltage power supply. These lightweight and portable bags are designed and assembled in the USA and come with a 1-year warranty.



HOLDS 2-3 BLANKETS

#BWS-03-AC
#BWS-03-DC
#BWS-03-CB
Call for pricing

HOLDS 4-5 BLANKETS

#BWS-05-AC
#BWS-05-DC
#BWS-05-CB
Call for pricing

HOLDS 6-7 BLANKETS

#BWS-07-AC
#BWS-07-DC
#BWS-07-CB
Call for pricing

Power Options

Choose between an AC Adapter (AC), DC Adapter (DC) or both (CB)!



Blanket Warmer Cabinets

Designed for radiology and CT centers. These stainless steel blanket warmers are adjustable from 98° to 180°F (37° to 82°C) with the help of an intelligent 4-digit LED controller. With no moving parts and an audio-visual temperature alarm, these heavy duty units are designed for safety and built to last. All three units come with hospital grade power cords. The two largest units include locking casters. Operational at either 120VAC or 220VAC. All units are UL & CSA approved.



COUNTERTOP UNIT

Holds 7 bed sized blankets.
16" x 24" x 20"
70 lbs.

#BW-210
Call for pricing

SHORT CABINET

Holds 25 bed sized blankets.
22" x 29" x 40"
170 lbs.

#BW-710
Call for pricing

TALL CABINET

Holds 50 bed sized blankets.
22" x 29" x 70"
350 lbs.

#BW-1400
Call for pricing

Leg Support

Safely supports and positions patient leg. Easy to use Posi-Lock height adjustment. Lift height range: 14 1/2" to 19". 6 1/2" x 9 1/2" calf support comes with nylon covered pad. All steel frame with sturdy 9" x 12" base. Shipping weight: 14 lbs.

#LGS-09
\$599.00



Bariatric Leg Support

Same as LGS-09, except: Extra large 15" x 18" base. Shipping weight: 19 lbs.

#LGS-B11
\$638.00



Lateral Chest Support

Height adjustable bar provides stability for patients of almost every height. Helps reduce re-takes. Cast aluminum base easily mounts to the wall. Repositionable aluminum bar is comfortable to grip.

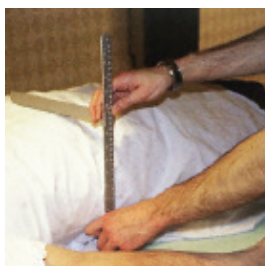


#RLC-36 (36" tall support)
\$1650.00

#RLC-48 (48" tall support)
\$1654.00

Caliper

Accurately measures body thickness to be x-rayed, up to 21" in depth. Calibrated in both inches and cm. Made of durable aluminum. 1" wide x 2 1/4" tall x 10 1/8" leg. Ships @ 1 lb.



#CAL-21
\$57.00

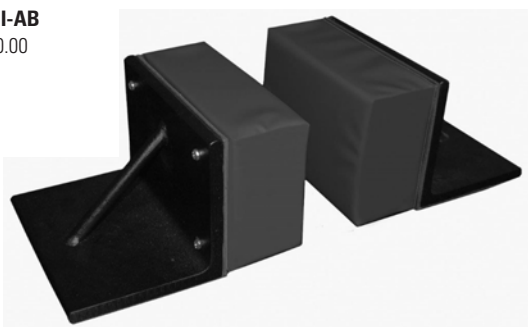


Head Immobilizer

Safely supports and positions patient head. Solid steel angles with soft, vinyl covered cushions. Blocks with handles weigh 15-lbs each. Cushions: 8" w x 6" h x 3" d. Shipping weight: 32 lbs.

(Edges may appear on images using low kVp.)

#RHI-AB
\$340.00



Head Paddles

Ideal for a designated person to keep patient's head comfortable and steady. Rigid vinyl discs with comfort-grip handles. Coated foam cushions: 7" dia. x 1 1/2" thick. Shipping weight: 4 lbs.



COATED
#RHI-CP
\$110.00

NON COATED
#RHI-HP
\$90.00



Radiolucent Immobilizer Strap

Comfortably secures patient position and eliminates motion. Helps prevent patient falls without limiting respiration or circulation. Ideal for MRI, CT, and Radiology dept. Available in 3 widths and 5 length for a variety of patients and tables. Strap is heavy gauge reinforced vinyl. Fast and easy hook and loop closure. Easy to remove in case of emergency. Fast and easy hook and loop closure. Easy to remove in case of emergency.

Available Colors	cat.#	width x length	price
 Blue (default)	RDH-060	7" x 60"	\$79.00
	RDH-072	7" x 72"	\$89.00
	RDH-084	7" x 84"	\$110.00
 Black	RDH-096	7" x 96"	\$130.00
	RDH-120	7" x 120"	\$169.00
 Green	RDP-060	14" x 60"	\$120.00
	RDP-072	14" x 72"	\$132.00
	RDP-084	14" x 84"	\$152.00
 Yellow	RDP-096	14" x 96"	\$174.00
	RDP-120	14" x 120"	\$220.00
 Red	RDW-060	20" x 60"	\$152.00
	RDW-072	20" x 72"	\$164.00
	RDW-084	20" x 84"	\$184.00
 Mint	RDW-096	20" x 96"	\$205.00
	RDW-120	20" x 120"	\$252.00

BLUE is the default color. Colors are for Immobilizer Straps only. Hook and Loop is black.



Universal Restraint

Universal clamp fits most imaging tables. 6" x 52" or 10" x 72" nylon strap firmly and comfortably holds the patient to the table with hook and loop closure. Brackets are stainless steel for long life.



#RDS-12
6" x 52"
\$168.00

#RDS-22
10" x 72"
\$205.00

Elastic Extremity Immobilizer

6" wide strap is designed for superior stability. Strap extensions then cross over patient where they are secured with "hook" and "loop" closure. Three standard lengths; custom available.



cat.#	width x length	price
RDF-084	6" x 84"	\$54.00
RDF-096	6" x 96"	\$58.00
RDF-120	6" x 120"	\$116.00

Traction Hand-Hold Straps

Straightening the legs easily applies traction. Hook and loop hand-hold straps provide secure grip.



MANUAL #RDT-HN \$104.00



Traction Hand-Hold Straps

Primarily for elderly or unconscious patients. Rigid foot plate provides stable, steady support.



AUTOMATIC #RDT-SH \$168.00

Biopsy Stretcher Chair

Ideal for use as a procedural chair or treatment table. The chair's versatility allows it to be used for pre-induction, transport, treatment, and recovery. Easy controls from either side of the chair allow height adjustment for optimal patient positioning. Seat height ranges from 23.5" to 31.5". Premium 5" Tente casters make for easy maneuvering. Backrest and leg section adjust from 90° upright to full spine, and 10° Trendelenburg. Features fold-down handrails and 3" comfort mattress. Weight capacity: 325 lbs.



#CRH-MBC
(Call for Price)



Video Fluoroscopic Chair

Ideal solution for radiology, mammography, and transport. Specially designed back has removable section to accommodate the space confinements of large imaging equipment. Easy controls allow height adjustment and full swivel for perfect patient positioning. Seat height range: 23.5" to 31.5". Premium 5" Tente casters make for easy maneuvering. Backrest and leg section adjust from 90° upright to full supine, and 10° Trendelenburg. Features a removable back section and 3" comfort mattress.

Default Color: Teal. Other colors are available at an additional cost.



With seat rotated for increased imaging capacity.

#CRH-VIC
(Call for Price)



Radiology Positioning Stool

Built with an all natural wood finish. Features anti-slip treads on both platform surfaces for increased safety and durability. Included casters on both the back and side for easy tilt-n-go transport. Built-in X-Ray Cassette slot is perfectly designed to hold film or digital panels. This unit has a 500lb weight capacity. Assembly required upon delivery.

WMP-726
\$1189.00

DIMENSIONS	Height	Width	Depth
Bottom Step	9"	24"	9"
Top Step	18"	24"	18"
Full Unit	56"	24"	27"

X-RAY CASSETTE SLOT
Fit for film or digital panels

DIMENSIONS	Width	Depth
Cassette Slot	24"	18"



INCLUDED CASTERS FOR EASY TILT-N-GO TRANSPORTATION!

NEW Ultrasound Exam Weight Bearing Step Platform

Techno-Aide's Ultrasound Exam Step Platform permits efficient and accurate exams of the upper and lower leg during venous insufficiency studies and Doppler exams. The patient is placed in an optimal position for easy ergonomic scanning by the ultrasonographer promoting a better scanning environment. Designed for patients up to 350 lbs. Easy to store and move with medical grade casters. Easy to keep clean. Platform is made from stainless steel.

WMS-10
\$1,099.00

Overall	Top Step	Bottom Step
54.5" tall	8" tall	9" tall
26" long	16" deep	10" deep
20" wide	19" wide	19" wide

WMS-20
\$1,299.00

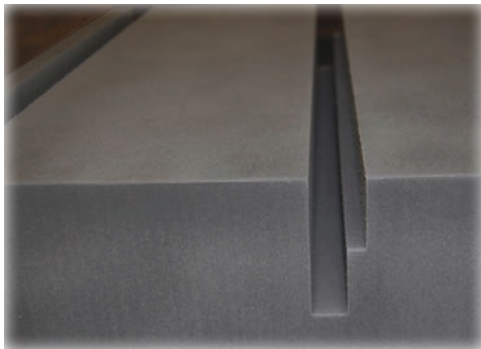
Overall	Top Step	Bottom Step
54.5" tall	8" tall	7" tall
28" long	11" deep	15" deep
15.5" wide	15.5" wide	15.5" wide



2-Step Weight Bearing Platform

Allows for weight bearing imaging of the knees, ankles, and feet. Three receptor slots on the top platform and two slots on the bottom platform. A 52" high safety rail provides for patient stability.

Comfort Top: black, 6 lb high density crosslink closed cell foam for comfort and support. 350-lb. weight capacity. Platform heights: 11 1/2" and 16 1/4". All steel frame with 30"l x 20"w base.



Lower Channel is 1 1/16" wide to accommodate different receptors

Upper Channel is 1 1/16" wide to accommodate GE Flash Pad.

Easy to move with two medical-grade casters.



COMFORT TOP

#WMP-16

\$1950.00

Actual Wt: **64 lbs**

Ships@ 105 lbs

*For customers wanting this stand with no foam on the bottom step, order **#WMP-24** \$1920.00



2-Step Weight Bearing Platform

Allows for weight bearing imaging of the knees, ankles, and feet. Three receptor slots on the top platform and two slots on the bottom platform. A 52" high safety rail provides for patient stability.

Durability Top: black, high-density, solid polyethylene with anti-slip matting. 350-lb. weight capacity. Platform heights: 11 1/2" and 16 1/4". All steel frame with 30" length x 20" width base.



Lower Channel is 1 1/16" wide to accommodate different receptors

Upper Channel is 1 1/16" wide to accommodate GE Flash Pad.

Easy to move with two medical-grade casters.



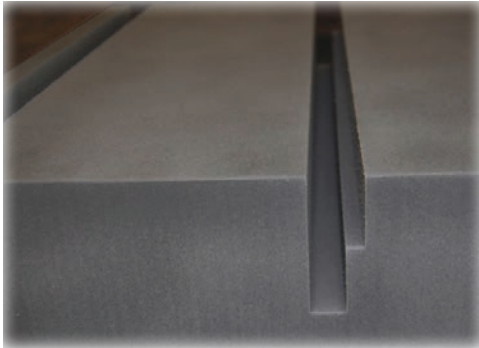
DURABILITY TOP
#WMP-22
 \$2730.00
 Actual Wt: **105 lbs**
 Ships@ 160 lbs



3-Step Weight Bearing Platform

Designed for tube stands that don't go low enough to the floor to allow for proper weight bearing imaging. Three receptor slots on the top platform and two slots on the middle platform. 59" high safety rail provides for patient stability.

Comfort Top: black, 6 lb. high-density crosslink closed cell foam for comfort and support. 250-lb. weight capacity. Platform heights: 8 1/2", 19 1/2", and 23". All steel frame with 42" l x 20" w base.



Lower Channel is 1 1/16" wide to accommodate different receptors

Upper Channel is 1 1/16" wide to accommodate GE Flash Pad.



Easy to move with two medical-grade casters.



COMFORT TOP
#WMP-14
 \$2770.00
 Actual Wt: **92 lbs**
 Ships@ 158 lbs



3-Step Weight Bearing Platform

Designed for tube stands that don't go low enough to the floor to allow for proper weight bearing imaging. Three receptor slots on the top platform and two slots on the middle platform. 59" high safety rail provides for patient stability.

Durability Top: black, high-density, solid polyethylene with anti-slip matting. 350-lb. weight capacity. Platform heights: 8 1/2", 19 1/2", and 23". All steel frame with 42" l x 20" w base.



Lower Channel is 1 1/16" wide to accommodate different receptors

Upper Channel is 1 1/16" wide to accommodate GE Flash Pad.

Easy to move with two medical-grade casters.



DURABILITY TOP
#WMP-28
 \$3198.00
 Actual Wt: **133 lbs**
 Ships@ 200 lbs



Defecogram Chair

Designed for use for patients with evacuation dysfunction. Defecography is a dynamic radiological examination that produces an anatomical depiction of the changes in the rectum and anal canal, and provides physicians with functional information about the movements of the pelvic floor at rest, during voluntary contraction, and with defecation. The chair allows radiography of a patient's bowel movement in radiology, rather than the more costly MRI/CT.

300-ib capacity unit includes: locking casters, removable 10-qt basin, wrap around skirt for basin modesty, and a 9" raised heel support. Manufactured of Schedule 40 1 1/4" healthcare-grade PVC, this chair is non-returnable and offers a one-year warranty. Manufactured in USA.

Cat.# CRH-DFC
\$2500.00



NEW 3-Stair Chair Combo

Designed for use with equipment that needs a Defecogram chair taller than allowed for our standard CRH-DFC.

Cat.# CRH-DFS
\$2800.00



Sterile Equipment Drapes

Take the guesswork out of selecting the correct sterile drape for your specific model C-Arm. Let us know which system you have and place your order. Our range of our drapes have been form-fitted for C-Arms to cover the image intensifier, x-ray tube, and flex arm, helping you eliminate the frustration and time of buying the wrong drape. Each drape is manufactured from 2 mil clear polyethylene and is latex-free. Each drape is designed to be durable and budget-friendly.

cat. #	description	qty	price
SED-4002	Elastic-end drape for Mini-C-arms: Officemate, Fluoroscope I and Fluoroscope III with 3/4" FOV	40	\$63.00
SED-4003	Elastic-end drape for Mini-C-arms: Fluoroscan Premier/Encore, Fluoroscan/Hologic Insight, Orthoscan, Lunar Orca, OEC with all FOV sizes, Xi Tex/Xi Scan	40	\$613.00
SED-1001	Standard C-arm drape, 42" x 74" (compatible with full-size C-arms: OEC, Ziehm, Philips, Comed)	30	\$300.00
SED-1002	Consumable pack includes: C-arm drape, 24" x 20" footswitch cover, 36" x 36" image intensifier & x-ray tube cover, and 5 clips. Fits OEC 9600/9800/9900.	20	\$500.00
SED-1003B	Banded bag for 9" image intensifier, 30" x 30"	20	\$200.00
SED-1003D	Dome cover w/ latex-free elastic, 18" deep	20	\$150.00
SED-8004F	Foot switch cover, 24" x 20"	100	\$375.00
SED-8003F	Foot switch cover, 17" x 15"	100	\$550.00



Mammography Exam Capes

Maintains patient modesty and confidence. Provides protection against cross-contamination. Comfortable, non-irritating materials. Eliminates laundry and replacement costs.



Pink Cape

Open front/back. Soft 3-ply tissue. Size: 30" x 21".

Color: PINK. 100 capes per case.

#GMC-22

\$70.00/case



White Cape

Open front/back. Soft 3-ply tissue. Size: 30" x 21".

Color: WHITE. 100 capes per case.

#GMC-21

\$54.00/case

Standard Exam Gown

Open front/back w/ties. Soft tissue/poly/tissue. Regular size: 30" x 42" Color: BLUE. 50 gowns per case.



#GXE-55

\$76.00/case

Extrasize Exam Gown

Open sides w/ties. Non-woven. Size: 40" x 50". Color: BLUE. 25 per case.



SIZE: XL

#GXS-57

\$166.00/case

Stretcher Sheets

Soft and water resistant. 2-ply tissue/poly. Size: 40" x 90". Color: WHITE/BLUE. 50 sheets per case.



#GSS-49

\$92.00/case

Pillow Cases

Soft and water resistant. 2-ply tissue/poly. Size: 21" x 30". Color: BLUE. 100 cases per case.



#GPC-23

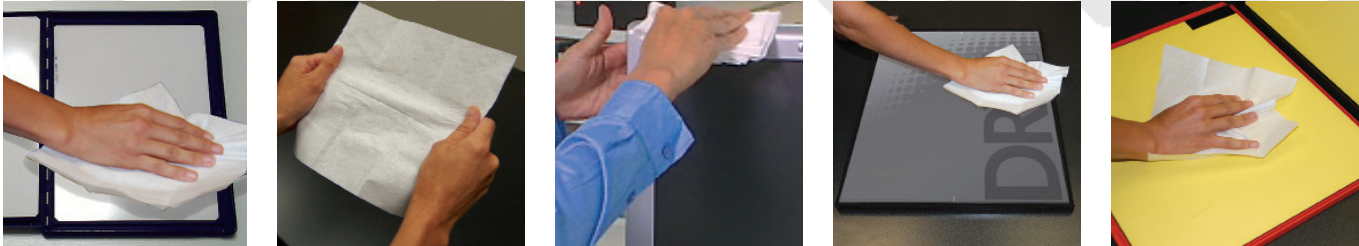
\$80.00/case

True Wipes

A new standard for Lint-Free Wipes

Having passed the USP-797 clean environment testing, True-Wipes are ideal for lint-free cleaning of: CR/DR/CT/mammography screens, x-ray cassettes, work stations, PACS monitors, microscopes, lenses and general work surfaces. These highly absorbent 9" x 9" lint-free wipes can be used with screen cleaner, alcohol, bleach, and peroxide to clean and disinfect. Wipes are packaged in a resealable double bag to avoid contamination from typical box dispensers. Reinforces your vital QA standards.

#TW-200 (200 total wipes)
\$58.00/bag



SANI-CLOTH® AF3 Alcohol-Free Wipes

Contains an excellent range of effectiveness. Cleans, disinfects, deodorizes & fragrance-free. Alcohol content: ALCOHOL-FREE (less than 0.016%). Recommended Contact Time: 3-minutes or less. Commonly used for **MAMMOGRAPHY, ULTRASOUND and most other IMAGING EQUIPMENT.** PLUS daily use items like table pads, sandbags, coated sponges, transfer boards, aprons, shields, vinyl straps... you name it. Meets CDC, OSHA and CMS Tag F441 guidelines.



cat.#	wipe size	quantity	price
GWP-WAF	6" x 6 ³ / ₄ "	tub of 160 wipes	\$14.50
GWP-WAFCS	6" x 6 ³ / ₄ "	case of 12 tubs	\$173.00

SANI-CLOTH® BLEACH Wipes

Ideal for disinfecting high risk areas endemic with Multidrug-Resistant Organisms, Clostridium difficile spores, Norovirus, MRSA, and 50 other pathogenic microorganisms. Recommended Contact Time: 4-minutes. Compatible with a wide range of surfaces and equipment. Meets CDC, OSHA and CMS Tag F441 guidelines with a 1:10 bleach dilution.



cat.#	wipe size	quantity	case price
GWP-B12CS	6" x 10 ¹ / ₂ "	12 tubs of 75 wipes	\$230.00
GWP-BB14CS	7 ¹ / ₂ " x 15"	6 tubs of 65 wipes	\$215.00

EASY SCREEN™ Cleaning Wipes

Touch-Screen cleaner that "works at the speed of technology." Rapidly cleans dirt, grime, fingerprints and smudges from healthcare equipment. Helps prevent cross-contamination with a 70% isopropyl alcohol (IPA) solution. Commonly used for **Touch-Screens, Tablets, Lighting, and most other imaging equipment.** Effectively treats acrylic, polycarbonate, glass, stainless steel, and more.








#GWP-ESW
\$178.00 (12 tubs of 70 wipes)

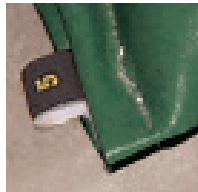
Sandbags

All sandbags are filled with sand and are ready to use. Heat sealed inner sleeve prevents the leakage of sand. All seams are sewn and tear resistant. Deep green outer cover is heavy gauge, reinforced vinyl. Every sandbag includes a reinforced webbing handle.

Custom Sizes Available!

- Sandbag Colors**
(Sandsocks not included)
-  Green (default)
 -  Black
 -  Red
 -  Blue
 -  Yellow

All sandbags include weight ID tag



2-lb
4" x 9"
#SBP-02
\$24.00



3-lb
5" x 9"
#SBP-03
\$24.00



5-lb
7" x 9"
#SBP-05
\$32.00



5-lb
6" x 12"
#SBF-05
\$32.00



5-lb
9" x 9"
#SBC-05
\$32.00



7-lb
10" x 10"
#SBG-07
\$36.00



7-lb
6" x 14"
#SBF-07
\$36.00



10-lb
7" x 16"
#SBF-10
\$37.00



10-lb
11" x 11"
#SBC-AC
\$46.00

AC Joint Sandbag with wrist grip



10-lb
11" x 11"
#SBC-10
\$37.00



10-lb
11" x 11"
#SBC-HL
\$49.00



15-lb
12" x 12"
#SBG-15
\$42.00



20-lb
12" x 14"
#SBC-20
\$42.00

Sandsocks

Sandsocks are loosely filled sandbags that contour to a broad range of shapes and forms. Stabilizes hard-to-hold and irregular anatomy. No need for additional person to hold the patient. Double seams for strength and longevity. Flexible, heavy gauge, reinforced vinyl. Only available in "honey" color.

Custom Sizes Available!

Sandbags include free weight ID tag



1-lb 2" x 8"
#SBS-01
\$32.00 ea.



3-lb 4" x 12"
#SBS-03
\$33.00 ea.



5-lb 5" x 15"
#SBS-05
\$37.00 ea.



10-lb 6" x 20"
#SBS-10
\$40.00 ea.



12-lb 6" x 25"
#SBS-12
\$44.00 ea.



10-lb 6" x 28"
#SBS-28
\$44.00 ea.



15-lb 6" x 40"
#SBS-40
\$54.00 ea.



Stabilizes hard-to-hold and irregular anatomy!



Sandbag Kits

Stack up savings by ordering kits



5-LB CERVICAL
#SBK-CA \$60.00 set
Set: (2) 5-lb / 9" x 9"



10-LB CERVICAL
#SBK-CB \$70.00 set
Set: (2) 10-lb / 11" x 11"



20-LB CERVICAL
#SBK-CC \$80.00 set
Set: (2) 20-lb / 12" x 14"



10-LB AC JOINT W/WRIST GRIPS
#SBK-AC \$88.00 set
Set: (2) 10-lb / 11" x 11"



10-LB W/HANDLES
#SBK-HL \$93.00 set
Set: (2) 10-lb / 11" x 11"



FEMORAL/ANGIO
#SBK-FB \$85.00 set
Set: (1) 5-lb / 5" x 12"; (1) 10-lb / 7" x 16"; (1) 7-lb / 6" x 14"



GENERAL SET (A)
#SBK-GA \$230.00 set
Set: (2) 3-lb / 5" x 9"
 (2) 7-lb / 6" x 14"
 (1) 5-lb / 5" x 12"
 (2) 10-lb / 11" x 11"
 (1) 5-lb / 7" x 9"



GENERAL SET (B)
#SBK-GB \$180.00 set
Set: (2) 3-lb / 5" x 9"
 (2) 7-lb / 6" x 14"
 (2) 10-lb / 11" x 11"



PEDIATRIC
#SBK-PA \$125.00 set
Set: (1) 1-lb / 4" x 5"; (1) 2-lb / 4" x 9"
 (1) 3-lb / 5" x 9"; (1) 5-lb / 7" x 9"
 (1) 7-lb / 6" x 14"



SANDSOCK KIT
#SBK-SA \$165.00 set
Set: (1) 1-lb / 2" x 8"; (1) 10-lb / 6" x 20"
 (1) 3-lb / 4" x 12"; (1) 12-lb / 6" x 25"
 (1) 5-lb / 5" x 15"



ATHLETIC/BARIATRIC
#SBK-AA \$210.00 set
Set: (2) 7-lb / 10" x 10"; (2) 10-lb / 7" x 16"
 (2) 20-lb / 12" x 14"



ADMINISTRATION/MANUFACTURING

7117 Centennial Blvd. Nashville, TN 37209

Orders can be placed online or sent to orders@techno-aide.com

For official Quotes: quotes@techno-aide.com

Any questions can be directed to customerservice@techno-aide.com

P: 800.251.2629 or 615.350.7030

F: 800.554.6275 or 615.350.7879

techno-aide.com