



# Markers

2020  
PRODUCT  
GUIDE

## X-Ray Marker Reference

“Each radiograph must include an appropriate marker that clearly identifies the patient’s right (R) or Left (L) side. Medico-legal requirements mandate that these markers be present. R and L markers must be used with CR and DR digital imaging. The development of digital imaging and the use of CR and DR have enabled an environment in which the R and L markers can be placed on the image electronically. This is not recommended because of the great potential for error and legal implications. Anatomic markers should be placed on the CR cassette or DR table similar to screen-film cassettes.”

[Merrill’s Atlas of Radiographic Positioning and Procedures, 9780323073219, text extract]

Techno-Aide is proud to offer the ultimate x-ray marker customization!  
 Mix & match from our unique styles, our premium add-ons  
 and choose from over 10,000 color combinations!  
 Don’t wait, start building your PERFECT marker set today!

## Marker Mates

A new, reusable sticky strip that adheres markers to receptors or equipment. Simply peel off the protective film and apply to the back of your markers. Each pair of Marker Mates will last approximately 30-days under normal use and care. No more need for tape when you can instantly mate your markers!

CAT. #	Quantity	Price
MM-XRAY	1 Pair	\$3.75
MM-XRAY10	10 Pair	\$35.00
MM-XRAY25	25 Pair	\$90.00
MM-XRAY100	100 Pair	\$350.00
MM-XRAY250	250 Pair	\$975.00
MM-XRAY500	500 Pair	\$1750.00



- The world’s **strongest x-ray adhesive**
- **3x Stronger** than standard marker adhesives
- Tested up to **6 months of continuous use** in clinical studies
- **Works with every type of marker!**
- Easy to wash, clean and reuse
- **Reduces the spread of infections and disease**

## HOW TO BUILD YOUR PERFECT MARKERS!

### Step 1: Choose a Marker Style

#### Elite Aluminium Style

Elite markers offer a easily identifiable and durable aluminum casing.



#### Identifier Plastic Style

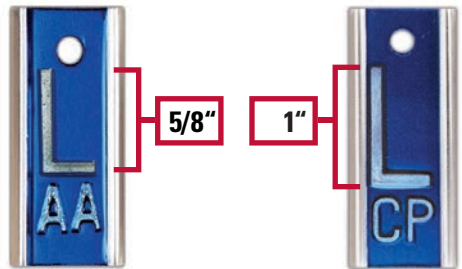
Identifier markers offer a high-impact polystyrene casing, enhancing quality control.



### Step 2: L & R Options

#### Choose a size for your L & R

Techno-Aide offers three sizes for your L & R. Choose from 0.5", 5/8" or 1" letters.



### Step 3: Mix & Match Options For the Perfect Marker

#### Choose How Many Lines

Techno-Aide offers one or two lines of characters on almost every marker. Multiple options to meet any need.

1 line letters are 3/8"  
2 line letters are 1/4"

L & R do not count as lines.



#### Choose How Many Characters

Choose from two or three initials/characters on almost any marker. Multiple options to meet any need.

L & R do not count as lines or characters.



#### Numbers, Letters or Both!

Need all numbers, all letters or a mix? No Problem! Techno-Aide offers every combination of numbers and letters.

Elite and identifier markers also available without initials!



#### Add Copper Filtration

Our copper filtered markers are specifically engineered for High KV. Crafted with high density lead letters. Add copper filtration on ANY marker today!

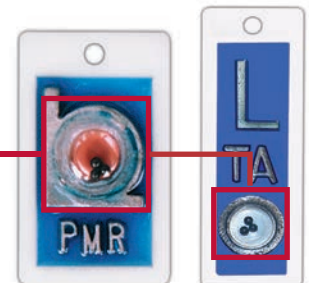
Copper prevents burnout at higher KV!



#### Position Indicators

Techno-Aide offers position indicators on our elite and identifier markers. Lead beads indicate the patients position during imaging!

Beads indicate patient position!



Go to the next page for Step 4!

## Step 4: Picking your color options!

Techno-Aide is proud to offer THOUSANDS of color combinations for you to choose from. Mix and Match your favorite colors on nearly every style marker to create your PERFECT marker set! **UNLESS NOTED, all marker sets will feature a Blue Left Marker and a Red Right Marker by default.**

### Option 1: Default colors

Don't need any color options? ALL of our markers come **DEFAULT** with a **Blue left marker** and a **Red right marker** UNLESS noted! Simply use the provided Catalog Number (CAT#) for ANY marker to order a **Blue** and **Red** set.

**EX: 1E** for a Blue & Red Elite Marker Set  
**EX: TA-1** for a Blue & Red Identifier Marker Set

**Now available in Blue and Red Glitter!**  
**Add "-G" to any default Catalog Number**

**EX: 1E-G** for a Blue & Red Glitter Elite Marker Set  
**EX: TA-1-G** for a Blue & Red Glitter Identifier Marker Set



### Option 2: Matching Sets

Want to add some fun to your markers? Simply add the color code (on pages 4 & 5) to your marker set when ordering!

**EX: 1E-SGR** for a **SET** (L & R) of **Solid Green** Elite Markers

**EX: TA-1-GPR** for a **SET** (L & R) of **Purple Glitter** Identifier Markers



### Option 3: Mix & Match Color Sets

The **ULTIMATE** customization. Mix & Match any solid, glitter or mixed color options for your Left and Right markers!

**EX: 1E/L-SPR & 1E/R-SYL** for **individual (L & R)** Elite Markers

**EX: TA-1/L-SBK & TA-1/R-SOR** for **individual (L & R)** Identifier Markers



Color options shown are only a representation of the final product. Monitor and printing variations may cause deviations in the final product.

Choose your favorite colors using the provided color codes. **Blue Left and a Red Right markers by default unless noted.**  
**Please note: S** stands for solid, **G** for glitter, **M** for mixed colors and **MG** for mixed glitter.

### Solid Colors [S]

					
Red   SRD	Blue   SBL	Light Blue   SLB	Navy Blue   SNB	Dark Blue   SDB	Light Pink   SLP
					
Hot Pink   SHP	Dark Red   SDR	Burgundy   SBG	Purple   SPR	Orange   SOR	Burnt Sienna   SBS
					
Brown   SBR	Lime Green   SLG	Green   SGR	Dark Green   SDG	Turquoise   STQ	Cream   SCR
					
Yellow   SYL	Gold   GL	White   SWH	Silver   SSL	Grey   SGY	Black   SBK

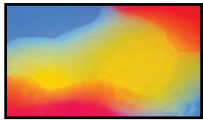
### Glitter Colors [G]

					
Red   GRD	Blue   GBL	Light Blue   GLB	Light Pink   GLP	Hot Pink   GHP	Burnt Sienna   GBS
					
Purple   GPR	Yellow   GYL	Orange   GOR	Lime Green   GLG	Green   GGR	Turquoise   GTQ
				<div style="background-color: #2e8b57; color: white; padding: 10px; border-radius: 15px; display: inline-block;"> <b>Mix &amp; Match any colors!</b> </div>	
Gold   GGL	Brown   GBR	White   GWH	Silver   GSL		



Choose your favorite colors using the provided color codes. **Blue Left and a Red Right markers by default unless noted.**  
**Please note: S** stands for solid, **G** for glitter, **M** for mixed colors and **MG** for mixed glitter.

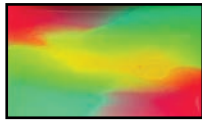
## NEW Colorsplash Mixed Markers [M]



Red | Yellow | Blue  
M01



Red | Yellow | Orange  
M02



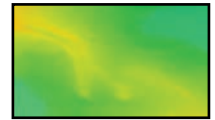
Red | Green | Yellow  
M03



Purple | Yellow  
M04



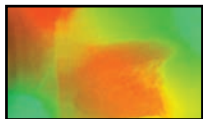
Yellow | Light Blue  
M05



Yellow | Green  
M06



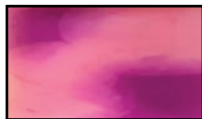
Orange | Yellow  
M07



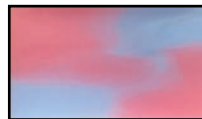
Orange | Yellow | Green  
M08



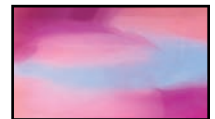
Pink | Lt Blue | Yellow  
M09



Pink | Purple  
M10



Pink | Light Blue  
M11



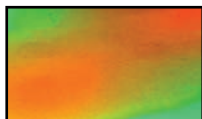
Pink | Purple | Lt Blue  
M12



Red | Green  
M13



Red | Blue  
M14



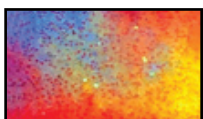
Orange | Green  
M15



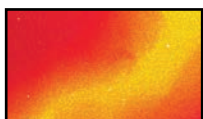
Purple | Green  
M16

Every set  
is unique!

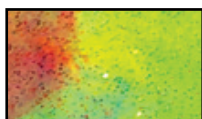
## NEW Colorsplash Mixed Glitter Markers [MG]



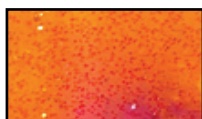
Red | Yellow | Blue  
MG01



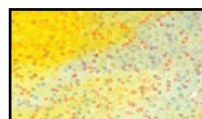
Red | Yellow | Orange  
MG02



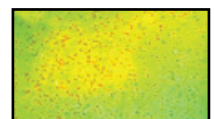
Red | Green | Yellow  
MG03



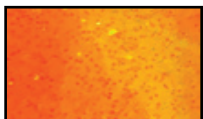
Purple | Yellow  
MG04



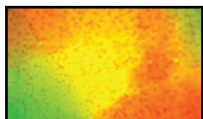
Yellow | Light Blue  
MG05



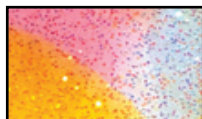
Yellow | Green  
MG06



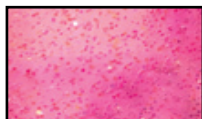
Orange | Yellow  
MG07



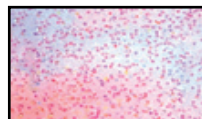
Orange | Yellow | Green  
MG08



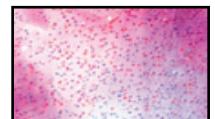
Pink | Lt Blue | Yellow  
MG09



Pink | Purple  
MG10



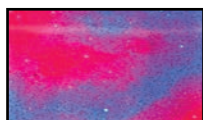
Pink | Light Blue  
MG11



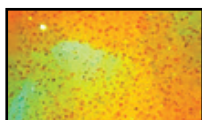
Pink | Purple | Lt Blue  
MG12



Red | Green  
MG13



Red | Blue  
MG14



Orange | Green  
MG15



Purple | Green  
MG16

Mix & Match  
any colors!

## Elite Markers | Aluminum

Elite markers have the most DURABLE aluminum casing. These markers provide the absolute best in QCI. Easily identifiable. **UNLESS NOTED, all marker sets will feature a Blue Left Marker and a Red Right Marker by default.**

1E | \$22.00 Per Set



R & L are 5/8"  
2 Initials are 3/8"  
3 Initials are 1/4"

Without Initials:  
4E | \$14.00 per set

7E | \$25.00 Per Set



R & L are 1"  
2 Initials are 3/8"  
3 Initials are 1/4"

Without Initials:  
5E | \$16.00 per set

8E | \$25.00 Per Set



R & L are 5/8"  
2 Lines of Initials  
2-3 Initials are 1/4"

Mix & Match Over  
10,000 Different Color  
Combinations!

## Identifier Markers | Plastic

Identifier markers have high-impact polystyrene casing. Enhances quality control with fewer repeat exams. Provides basic, yet personalized image identification. **UNLESS NOTED, all marker sets will feature a Blue Left Marker and a Red Right Marker by default.**

TA-1 | \$20.00 Per Set



R & L are 5/8"  
2 Initials are 3/8"  
3 Initials are 1/4"

Without Initials:  
TA-4 | \$13.00 per set

TA-7 | \$24.00 Per Set



R & L are 1"  
2 Initials are 3/8"  
3 Initials are 1/4"

Without Initials:  
TA-5 | \$14.00 per set

TA-8 | \$24.00 Per Set



R & L are 5/8"  
2 Lines of Initials  
2-3 Initials are 1/4"

Mix & Match Over  
10,000 Different Color  
Combinations!

## Elite Color Marker Examples | Aluminum

1E-SOR | \$22.00



1E-SGR | \$22.00



1E-SBK | \$22.00



1E-GHP | \$22.00



1E-GPR | \$22.00



1E-GGL | \$22.00



1E-M07 | \$22.00



1E-M15 | \$22.00



1E-M05 | \$22.00



1E-MG01 | \$22.00



1E-MG11 | \$22.00



1E-MG14 | \$22.00





## Identifier Color Marker Examples | Plastic



## Position Indicator Markers | Beads Indicate Patient Position

Techno-Aide proudly offers position indicators on our elite and identifier markers. Lead beads indicate the patients position during imaging! Our MOST popular marker upgrade! **UNLESS NOTED, all marker sets will feature a Blue Left Marker and a Red Right Marker by default.**

### Elite Position Indicator Markers | Aluminum

TA-13 | \$32.00 Per Set

R & L are 5/8"  
2 Initials are 3/8"  
3 Initials are 1/4"

**Without Initials:**  
TA-14 | \$27.00 per set

NEW TA-23 | \$35.00 Per Set

Features 2 Lines!

R & L are 5/8"  
2 Initials are 3/8"  
3 Initials are 1/4"

Mix & Match  
Over 10,000  
Different Color  
Combinations!

### Identifier Position Indicator Markers | Plastic

TA-11 | \$32.00 Per Set

R & L are 5/8"  
2 Initials are 3/8"  
3 Initials are 1/4"

**Without Initials:**  
TA-12 | \$27.00 per set

TA-17 | \$37.00 Per Set

R & L are 7/8"  
2 Initials are 3/8"  
3 Initials are 1/4"

TA-16 | \$32.00 Per Set

R & L are 7/8"  
No Initials

## NEW Game Day Markers!

Go pro and show your team spirit with these specialty themed marker sets!

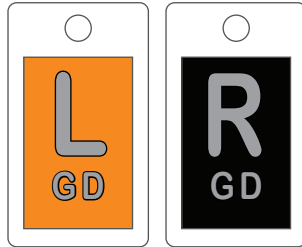


**BALTIMORE**



**TA-1-TM01** | \$20.00 per set

**CINCINNATI**



**TA-1-TM02** | \$20.00 per set

**CLEVELAND**



**TA-1-TM03** | \$20.00 per set

**PITTSBURGH**



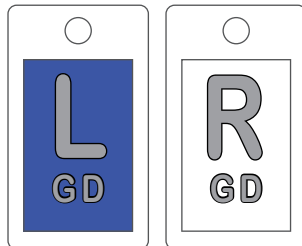
**TA-1-TM04** | \$20.00 per set

**HOUSTON**



**TA-1-TM05** | \$20.00 per set

**INDIANAPOLIS**



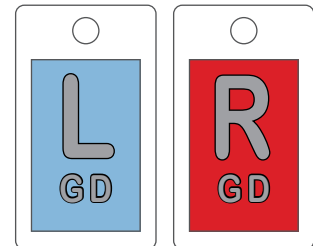
**TA-1-TM06** | \$20.00 per set

**JACKSONVILLE**



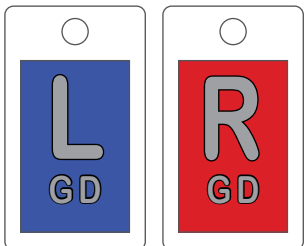
**TA-1-TM07** | \$20.00 per set

**TENNESSEE**



**TA-1-TM08** | \$20.00 per set

**BUFFALO**



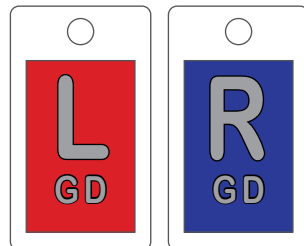
**TA-1-TM09** | \$20.00 per set

**MIAMI**



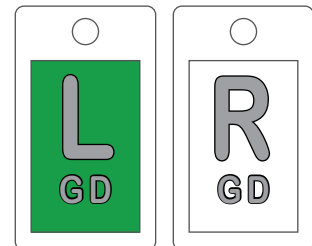
**TA-1-TM10** | \$20.00 per set

**NEW ENGLAND**



**TA-1-TM11** | \$20.00 per set

**NEW YORK**



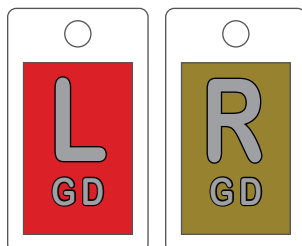
**TA-1-TM12** | \$20.00 per set

**DENVER**



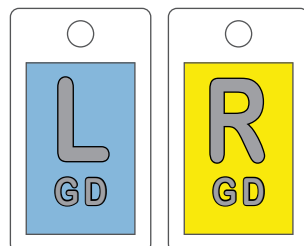
**TA-1-TM13** | \$20.00 per set

**KANSAS CITY**



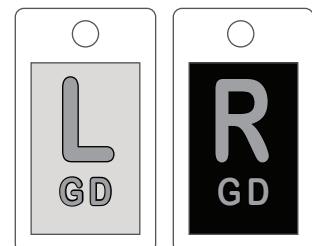
**TA-1-TM14** | \$20.00 per set

**LOS ANGELES**



**TA-1-TM15** | \$20.00 per set

**OAKLAND**



**TA-1-TM16** | \$20.00 per set

Color options shown are only a representation of the final product. Monitor and printing variations may cause deviations in the final product.

## NEW Game Day Markers!

Go pro and show your team spirit with these specialty themed marker sets!

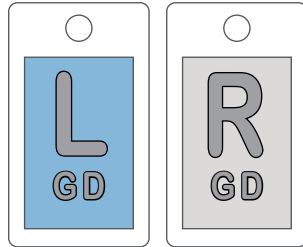


### CHICAGO



TA-1-TM17 | \$20.00 per set

### DETROIT



TA-1-TM18 | \$20.00 per set

### GREEN BAY



TA-1-TM19 | \$20.00 per set

### MINNESOTA



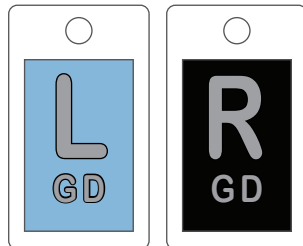
TA-1-TM20 | \$20.00 per set

### ATLANTA



TA-1-TM21 | \$20.00 per set

### CAROLINA



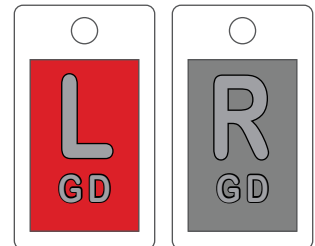
TA-1-TM22 | \$20.00 per set

### NEW ORLEANS



TA-1-TM23 | \$20.00 per set

### TAMPA BAY



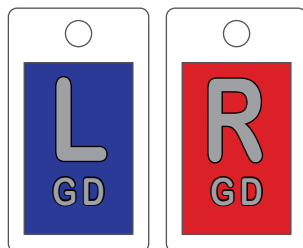
TA-1-TM24 | \$20.00 per set

### DALLAS



TA-1-TM25 | \$20.00 per set

### NEW YORK



TA-1-TM26 | \$20.00 per set

### PHILADELPHIA



TA-1-TM27 | \$20.00 per set

### WASHINGTON



TA-1-TM28 | \$20.00 per set

### ARIZONA



TA-1-TM29 | \$20.00 per set

### LOS ANGELES



TA-1-TM30 | \$20.00 per set

### SAN FRANCISCO



TA-1-TM31 | \$20.00 per set

### SEATTLE




TA-1-TM32 | \$20.00 per set



## Specialty Shapes and Arrow Markers

**PT-FRB | \$22.00 Per Set**


Tropical Fish Markers



R & L are 5/8"  
2 Initials are 3/8"  
3 Initials are 1/4"

**PT-SKW | \$22.00 Per Set**

Skull Markers



R & L are 5/8"  
2 Initials are 3/8"  
3 Initials are 1/4"

**TA-9 | \$24.00 Per Set**



R & L are 1"  
Up to 3 Initials are 3/16"

**TA-LK | \$22.00 Per Set**




Look Right & Look Left  
Arrow and "Look" are 1/2"

**TA-2 | \$26.00 Per Set**



R & L are 1/2"  
2 or 3 Initials are 1/4"

**TA-002 | \$20.00 Per Set**



R & L are 5/8"  
2 Initials are 3/8"  
3 Initials are 1/4"

**TA-A3 | \$7.00 Per Marker**



Arrow is 1"  
Sold as Individual Markers





**Without Initials:**  
TA-122 | \$22.00 per set

**Without Initials:**  
TA-001 | \$13.00 per set

Mix & Match Over 10,000  
Color Combinations!

## Wafer Thin Markers | Super Thin for Slim-Bucky Clearance

Perfect for newer equipment (CR, DR, etc.) with thin bucky clearance. Copper filtered for a broad range of KV. Elite style and color-coded. Wafer thin markers **ONLY** available in default Blue Left and Red Right. **Exceptionally thin markers: <math>< \frac{3}{32}</math> (2mm)**

<p>WTS-1   \$32.00 Per Set</p>  <p>R &amp; L are <math>\frac{3}{8}</math>" 2 Initials are <math>\frac{3}{16}</math>"</p>	<p>WTS-6B   \$32.00 Per Set</p>  <p>R &amp; L are <math>\frac{3}{8}</math>" 2 Initials are <math>\frac{3}{16}</math>"</p>	<p>WTS-6C   \$32.00 Per Set</p>  <p>R &amp; L are <math>\frac{3}{8}</math>" 2 Initials are <math>\frac{3}{16}</math>"</p>	<p>WTW-A3   \$10.00</p>  <p>Arrow is <math>\frac{1}{2}</math>" Sold as Individual Markers</p>
<p><b>Without Initials:</b> WTS-4   \$21.00 per set</p>	<p><b>Without Initials:</b> WTS-6A   \$21.00 per set</p>	<p><b>Without Initials:</b> WTS-6D   \$21.00 per set</p>	

## Markers for Oncology, CT & CR/DR | Super Thick for High Radiation

0.75" super thick, high-density lead letters. Designed for Oncology and Industry, and other applications. Elite style markers, color-coded and Techno-Aide tough. Vinyl and epoxy encased for extended life!

CAT#	Thickness	Description	Price
ROW-01	0.75"	Single letter	\$12.00
ROW-23	0.75"	2-3 letters	\$15.00
ROW-45	0.75"	4-5 letters	\$18.00
ROW-67	0.75"	6-7 letters	\$22.00
ROW-80	0.75"	8+ letters	\$25.00



[ EX: ROW-23: 0.75" sized, 0.25" thick letters ]

### WORD CHOICE EXAMPLES

2-3 Letters		4-5 Letters		6-7 Letters		8 or More Letters	
AP	LPO	FLAT	ERECT	AP ERECT	SUPINE	ANTERIOR	POST EVAC
PA	MAG	FLEX	HOURS	CLOSED	DELAYED	COMPARISON	POST VOID
ANT	MIN	INSP	PRE OP	INT ROT	FLEXION	DECUBITUS	SEMI ERECT
EXP	OBL	LEFT	PRONE	MOBILE	LATERAL	EXTENSION	STANDING
EXT	RAC	OPEN	PUREE	P EVAC	MINUTES	INFUSION	VALSALVAR
INT	LOA	POST	RIGHT	POST OP	OBLIQUE	INJECTION	VERTICLE W/WEIGHT
KUB	25	TOMO	SCOUT	RECUMB	SUNRISE	INVERSION	WEIGHT BEARING
LAO	600	DECUB	60 MIN	STRESS	UPRIGHT	PORTABLE	WT BEARING

RO-107B | \$32.00 Per Set



R & L are  $\frac{3}{4}$ "  
2 Initials are  $\frac{3}{8}$ "

**Without Initials:**  
RO-107A | \$24.00 per set

**WARNING! Oncology markers are  $\frac{3}{4}$ " thick and will NOT fit in most low clearance bucky trays!**

## Copper Filtered Markers | Filtered for High KV Exams

Our copper filtered markers are specifically engineered for High KV. Crafted with high density lead letters. Available in ELITE or IDENTIFIER. Color-coded, impact resistant. **UNLESS NOTED, all marker sets will feature a Blue Left Marker and a Red Right Marker by default.**

### Elite Markers | Aluminum

COP-1 | \$47.00 Per Set

1 set of 1E markers **with** copper filter &  
1 set of 1E markers **without** copper filter

COP-2 | \$45.00 Per Set

R & L are 1/2"  
2-3 Initials are 1/4"  
Filtered & Unfiltered on same maker

### Identifier Markers | Plastic

TA-C01 | \$43.00 Per Set

1 set of TA-1 markers **with** copper filter &  
1 set of TA-1 markers **without** copper filter

COP-2 | \$45.00 Per Set

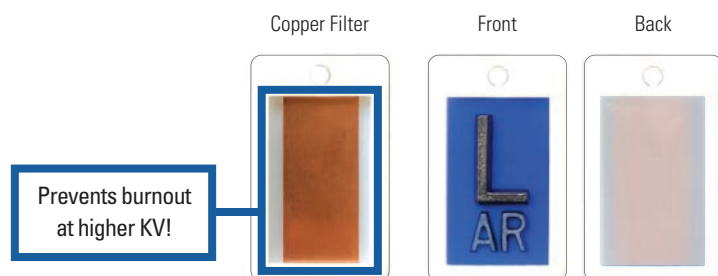
R & L are 1/2"  
2-3 Initials are 1/4"  
Filtered & Unfiltered on same maker

## Add Copper Filtering To Almost Any Marker!

Copper filtering add-on only \$4 per set!

**CAT# Copper | \$4.00 per set**

Copper filtering can be added to any marker type for only **\$4.00 per set!** Copper filtering is specifically engineered for High KV scans. Mix and match colors and types, then simply add copper filtering to your customization.

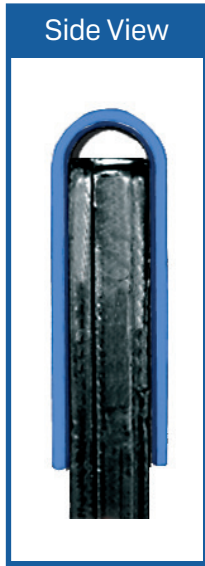


## Specialty Clipper Markers

### Standard Thin Clipper

Constructed of high strength Kydex™. Extra thin profile, double-sided, 1.5" wide.

CAT#	Description	Price Per Marker
CPP-40	With Initials	\$28.00
CPP-42	No Initials	\$25.00



R & L are 3/4"  
2 Initials are 3/8"  
3 Initials are 1/4"

### Elite Clippers

Both R & L are on one double clip. Durable Stainless Steel clips. **Color-coded: Right Side - Red / Left Side - Blue.**

#CP-35  
\$30.00 ea.  
(2-3 initials)



Double  
Personalized

### Portable and Position Double Clippers

#CP-13  
(with initials)  
\$37.00



#CP-36  
(with initials)  
\$37.00



#CP-14  
(no initials)  
\$30.00

#CP-37  
(no initials)  
\$30.00

### Gridcap Thin Clipper

Designed to fit DR/CR receptors with gridcap. Constructed with high strength Kydex™ material. Extra thin, double-sided, profile.

CAT#	Description	Price Per Marker
CPP-60	With Initials	\$38.00
CPP-61	No Initials	\$38.00



R & L are 3/4"  
2 Initials are 3/8"  
3 Initials are 1/4"

### Stencil Clipper

High quality plated steel construction for extreme durability. Stenciled, non-personalized right and left identifiers

#XSCP-10 | \$15.00 per clipper





## Image Scaling Marker Device

Scaling a digital image is mandatory in order to assure the highest level of diagnostic accuracy. It is critical to know the difference between the size of the anatomy shown on a digital monitor as compared to the actual anatomy. An easy to use, easy to clean, easy to understand calibration tool is a must, and a Rollr Precision Marker is the answer!

The patent pending radiolucent sphere holder and a size indicator sphere come together to allow perfect visibility of the sphere on the image as taken from any direction. A millimeter marker on the sphere holder indicates the size of the sphere that is being used.

The suction cup base allows the unit to be firmly secured to a flat table or a vertical wall bucky board that is close to the patient. The small footprint of the suction cup does not interfere with the patient, the technologist, nor limit its use.

The flexible gooseneck arm is perfect for positioning the calibration sphere as close as possible to the critical anatomy. The arm is covered with a smooth, crevice-free surface that allows for easy sanitation.

The autoclavable unit comes with the suction stand and one calibration sphere. Additional spheres can be bought separately in packs of six (6).



**Full unit with 25mm sphere**  
**#A25DR | \$785.00 each**

**Full unit with 25.4mm (1-inch) sphere**  
**#A24DR | \$785.00 each**

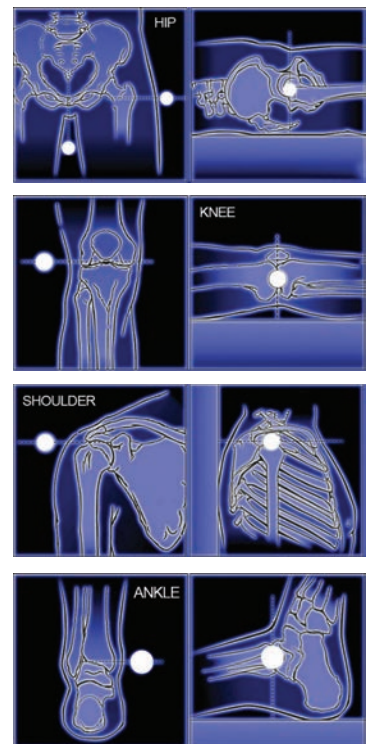
**Full unit with 30mm sphere**  
**#A30DR | \$882.00 each**



**Replacement 25mm sphere (set of 6)**  
**#S25DR | \$272.00 per set**

**Replacement 25.4mm sphere (set of 6)**  
**#S24DR | \$272.00 per set**

**Replacement 30mm sphere (set of 6)**  
**#S30DR | \$604.00 per set**



## CM Ruler Markers

The personalized R & L marker sets, or the stand alone 3cm ruler, are specifically designed for Teleradiology, CR and DR Imaging. The perfect solution when an image-size does not match the life-size anatomy. Place a marker on the Receptor Plate and capture the radiographed anatomy. The image of the unique 3cm ruler gives an immediate visual and measurable cue for accurate sizing. Each marker has a lead 3cm ruler. High density lead characters. **Color-coded: Right Side - Red / Left Side - Blue.**

1DR | \$50.00 Per Set

Ruler Style R & L are  $\frac{3}{4}$ "  
2-3 Initials are  $\frac{1}{4}$ "

2DR | \$50.00 Per Set

Ruler Style R & L are  $\frac{1}{2}$ "  
2-3 Initials are  $\frac{1}{4}$ "

3DR | \$30.00 Per Ruler

Ruler Only  
Measures in 1cm increments

1DR and 2DR CM Ruler Markers only available in Red and Blue

3DR only available in Yellow

## Elite Ruler Markers | Aluminum

Elite style R&L Markers with patient indicators. A 1cm ruler for immediate visual and measurable cue to the size of image captured.

TA-40DR | \$48.00 Per Set

Ruler Style R & L are  $\frac{5}{8}$ "  
2 Initials are  $\frac{3}{8}$ "

TA-50DR | \$48.00 Per Set

Ruler Style R & L are  $\frac{1}{2}$ "  
3 Initials are  $\frac{1}{8}$ "

Elite Ruler Markers available in any colors!

## Wafer-Thin Ruler | Aluminum

Perfect for equipment (CR, DR, etc.) with very thin bucky clearance. Exceptionally thin markers:  $< \frac{3}{32}$ " (2mm). Copper filtered for a broad range of KV.

WTS-DR | \$30.00 Per Set

Perfect for super-thin bucky clearance!

Ruler Style R & L  $\frac{1}{4}$ "  
3cm spacing

Wafer-Thin Rulers only available in Red & Blue

## Radi-O-Paque Extremity Ruler

Sturdy  $1\frac{1}{4}$ " wide by  $\frac{1}{8}$ " thick ruler. High density lead letters. Brilliant YELLOW color. Spaced in 0.5cm increments.

Comes in a brilliant yellow!

CAT#	Size	Price Per Ruler
CPT-R115	115cm	\$299.00
CPT-R45	45cm	\$195.00



## Lead Characters

If you have any questions about the size characters you need or are looking for additional sizes and styles, please call our customer service department, or mail us a sample so that we may send you exactly what you're looking for.

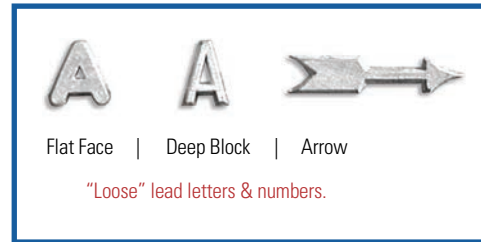


### Unmounted Lead Characters

Style	(3/16")	(1/4")	(3/8")	(1/2")
FLAT FACE	XTUF-36 .50	XTUF-14 .50	XTUF-38 .50	XTUF-12 .60
DEEP BLOCK	X	XTUB-14 .90	XTUB-38 1.00	XTUB-12 1.00
ARROWS	X	XTUA-14 1.00	X	XTUA-12 .80

Style	(5/8")	(1" R & L only)	(1" arrow)
FLAT FACE	XTUF-58 .60	XTUF-01 1.00	X
DEEP BLOCK	(see Flat Face)	X	X
ARROWS	X	X	XTUA-01 1.00



### Individual Mounted Characters (Flat Face)

CAT.#	Lead/Plastic Size	Price	Comments
XTSF-3658	3/16" on 5/8"	0.80	Fits: LLH-58, LLH-2, LLH-3, Veri-Thin
XTSF-3634	3/16" on 3/4"	0.80	Fits: Legal (regular)
XTSF-1458	1/4" on 5/8"	0.80	
XTSF-1434	1/4" on 3/4"	0.80	
XTSF-1478	1/4" on 7/8"	0.80	Fits: Eclipse, Perfection
XTSF-1234	1/2" on 3/4"	0.80	
XTIF-3658	3/16" on 5/8"	0.80	Fits: Ideal (special offset mounting)



Characters are mounted on CLEAR flat plastic tabs to fit a variety of letter holders.

### Flat Surface Mounted Words (Flat Face)

Description	Example	CAT.#	Price	CAT.#	Price	CAT.#	Price	CAT.#	Price
single letter	3	XVFW-0136	1.00	XVFW-0114	1.00	XVFW-0112	1.00	XVFW-0101	2.00
2-3 letters	EXT	XVFW-2336	2.00	XVFW-2314	2.00	XVFW-2312	2.00	XVFW-2301	4.00
4-5 letters	25 MIN	XVFW-4536	4.00	XVFW-4514	4.00	XVFW-4512	4.00	XVFW-4501	7.00
6-7 letters	STRESS	XVFW-6736	6.00	XVFW-6714	6.00	XVFW-6712	6.00	XVFW-6701	9.00
8+ letters	PORTABLE	XVFW-8036	7.00	XVFW-8014	7.00	XVFW-8012	7.00	XVFW-8001	11.00
Lead/Plastic Sizes		3/16" on 0.75"		0.25" on 0.75"		0.5" on 0.75"		1" on 1.5"	



Words made from Mounted Letters glued to the surface of a single CLEAR vinyl strip.

## Lead Letter Case

Injection Molded Box. 36 scoop-bottom compartments (for A-Z and 0-9). Side compartment for holder.

#XSLC-36  
\$44.00

Dimensions: 13" x 3" x 13" (1.40lbs)



NEW for 2020! Lead letter cases will default to a premium white color.

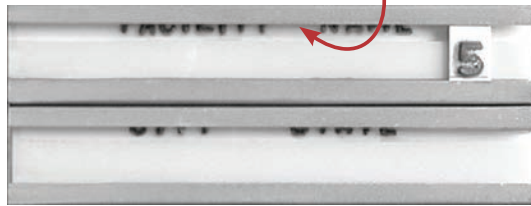
## Cushion Markers and Aluminum Channels

### Ideal Cushion Marker

Double channel with cushions; imprint in the upper section of each channel.

**#XSIC-21 \$75.00 ea.**  
Holder only. 3 1/2" x 15/16"

Viewable Imprint under Cushion



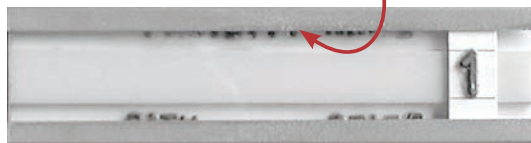
**#XSIC-22 \$170.00 ea set**  
Complete Set Includes:  
1ea. holder  
2ea. A-Z  
4ea. 0-9  
2ea. A, E, I, O, U  
1ea. 36-letter case  
(Replacement characters:  
3/16" on 5/8" plastic tabs, offset.  
Reorder #XTIF-3658)

### Eclipse Cushion Marker

Single channel with cushion; imprint above and below the centerline.

**#XSEC-11 \$59.00 ea.**  
Holder only. 3 1/2" x 15/16"

Viewable Imprint under Cushion



**#XSEC-12 \$120.00 ea set**  
Complete Set Includes:  
1ea. holder  
2ea. R, L  
4ea. 0-9  
1ea. 36-letter case  
(Replacement characters:  
1/4" on 7/8" plastic tabs.  
Reorder #XTSF-1478)

### Legal Marker

Double aluminum channels: imprint between the two channels.

**#XSLG-21 \$70.00 ea.**  
Holder only. 3 1/2" x 1 5/8"



**#XSLG-22 \$150.00 ea set**  
Complete Set Includes:  
1ea. holder  
2ea. A-Z  
4ea. 0-9  
2ea. A, E, I, O, U  
1ea. 36-letter case  
(Replacement characters:  
3/16" on 3/4" plastic tabs;  
Reorder #XTSF-3634)

### Perfection

Double aluminum channels; imprint down and in between the two channels. Great for Bucky Trays!

**#XSVL-21 \$70.00 ea.**  
Holder only. 3 1/2" x 11 3/16"



**#XSVL-22 \$150.00 ea set**  
Complete Set Includes:  
1ea. holder  
2ea. A-Z  
4ea. 0-9  
2ea. A, E, I, O, U  
1ea. 36-letter case  
(Replacement characters:  
3/16" on 5/8" plastic tabs.  
Reorder #XTSF-3658)

### Veri-Thin Legal

Single aluminum channel; imprint above and below the channel.

**#XSPF-11 \$60.00 ea.**  
Holder only. 3 1/2" x 15/16"



**#XSPF-12 \$120.00 ea set**  
Complete Set Includes:  
1ea. holder  
2ea. R, L  
4ea. 0-9  
1ea. 36-letter case  
(Replacement characters:  
1/4" on 7/8" plastic tabs.  
Reorder #XTSF-1478)



## Word Choices, Pricing and Accessories

### Wafer Thin

(1/4" letters x <math>3/32</math>" thin)



CAT.#	Description	Price
WTW-01	single letter	\$13.00
WTW-23	2-3 letters	\$16.00
WTW-45	4-5 letters	\$19.00
WTW-67	6-7 letters	\$22.00
WTW-80	8+ letters	\$25.00

### Oncology

(3/4" letters x 1/4" thick)



CAT.#	Description	Price
ROW-01	single letter	\$12.00
ROW-23	2-3 letters	\$15.00
ROW-45	4-5 letters	\$18.00
ROW-67	6-7 letters	\$22.00
ROW-80	8+ letters	\$25.00

### Wall Boards

Walnut grain w/brass hooks.



CAT.#	Description	Price
HK-32	32 Hook Board	\$100.00
HK-16	16 Hook Board	\$80.00
HK-8	8 Hook Board	\$70.00
HK-50	50 Hook Board	\$135.00

### ELITE Words (aluminum casing)



Description	Example	CAT.#	Price	CAT.#	Price
single letter	3	2E-Y	\$9.00	2E-Z	\$10.00
2-3 letters	EXT	3E-Y	\$11.00	3E-Z	\$13.00
4-5 letters	25 MIN	4E-Y	\$13.00	4E-Z	\$16.00
6-7 letters	STRESS	5E-Y	\$15.00	5E-Z	\$19.00
8+ letters	PORTABLE	6E-Y	\$18.00	6E-Z	\$22.00

### IDENTIFIER Words (polystyrene casing)



Description	Example	CAT.#	Price	CAT.#	Price
single letter	3	2TA-Y	\$8.00	2TA-Z	\$9.00
2-3 letters	EXT	3TA-Y	\$10.00	3TA-Z	\$11.00
4-5 letters	25 MIN	4TA-Y	\$12.00	4TA-Z	\$13.00
6-7 letters	STRESS	5TA-Y	\$14.00	5TA-Z	\$15.00
8-15/8-10	PORTABLE	6TA-Y	\$17.00	6TA-Z	\$18.00

## General Marker Set

**Elite**  
#GME-60  
\$575

**Identifier**  
#GMI-65  
\$525.00



Identifier Set shown (Board: 12" x 15")  
3/8" letters / 1/2" numbers

### WORD CHOICE EXAMPLES

2-3 Letters		4-5 Letters		6-7 Letters		8 or More Letters	
AP	LPO	FLAT	ERECT	AP ERECT	SUPINE	ANTERIOR	POST EVAC
PA	MAG	FLEX	HOURS	CLOSED	DELAYED	COMPARISON	POST VOID
ANT	MIN	INSP	PRE OP	INT ROT	FLEXION	DECUBITUS	SEMI ERECT
EXP	OBL	LEFT	PRONE	MOBILE	LATERAL	EXTENSION	STANDING
EXT	RAC	OPEN	PUREE	P EVAC	MINUTES	INFUSION	VALSALVAR
INT	LOA	POST	RIGHT	POST OP	OBLIQUE	INJECTION	VERTICLE W/WEIGHT
KUB	25	TOMO	SCOUT	RECUMB	SUNRISE	INVERSION	WEIGHT BEARING
LAO	600	DECUB	60 MIN	STRESS	UPRIGHT	PORTABLE	WT BEARING

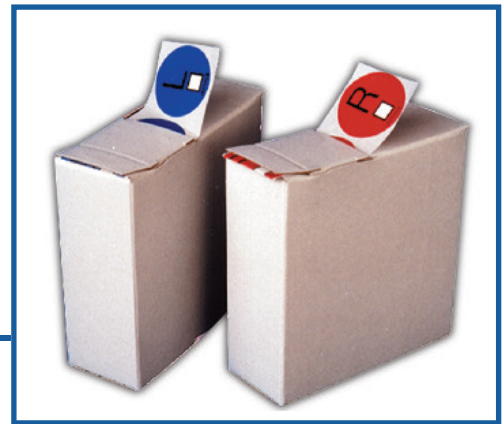
Mix & Match Over 10,000  
Color Combinations!

## Cover Tab Stickers

Ideal for coding mismarked or unmarked film. Features a self-adhesive backing and a 1.25" diameter circle with a square for writing initials. Includes 250 stickers per box. Each box is an individual letter. **Color-coded: Right Side - Red / Left Side - Blue.**

CAT#	Orientation	QTY of Boxes	Stickers Per Box	Price Per Box
TAB-L	Left Sticker	1 Box	250 Stickers	\$21.00
TAB-R	Right Sticker	1 Box	250 Stickers	\$21.00

Buy more, save more!  
Bulk discounts available!



## Marking Pens

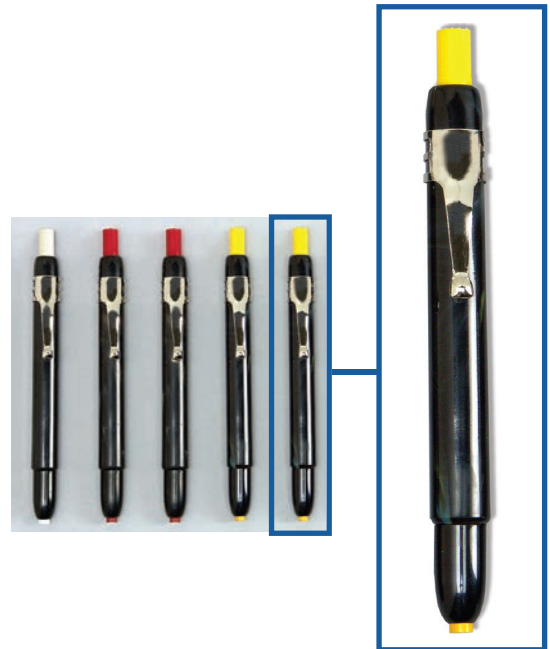
Highlights points of interest on a film. Wax markers resist smudging, but are not permanent. NOT to be used in place of lead markers. NOT a legally acceptable marking method.

### Marking Pen Options [sold as a pack of 5]

CAT. #	Pen Color	Quantity of Pens	Price Per Pack
MPY-11	Yellow	5	\$30.00
MPR-12	Red	5	\$30.00
MPW-13	White	5	\$30.00
MPA-19	Yellow, Red, White	2-YL   2-RD   1-WH	\$30.00

### Marking Pen Refills [sold as a pack of 72]

CAT. #	Refill Color	Quantity of Refills	Price Per Pack
MPY-21	Yellow	72	\$20.00
MPR-22	Red	72	\$20.00
MPW-23	White	72	\$20.00



**Order each item per number of packs.**  
**Example: #MPY-11 will be ship 5 yellow pens.**

## Skin Markers | For General X-Ray, Mammography, CT & Oncology

For general imaging, used to identify areas of pain or trauma, soft tissue masses, to document points of entry and exit sites. Specific markers can be used to mark prominent nipples for identification of nipple shadows on chest x-rays.

### Skin Dots

Artifact/nipple identifier. Helps eliminate repeat exams. Lead-free. Easy-Peel tab.

CAT.#	Size	Item QTY	Price
SDM-BB15	1.5mm	100 dots	\$79.00
SDM-BB20	2.0mm	100 dots	\$79.00
SDM-BB23	2.3mm	Digital Dots	\$79.00
SDM-BB25	2.5mm	100 dots	\$79.00
SDM-BB30	3.0mm	50 dots	\$149.99
SDM-BB40	4.0mm	50 dots	\$149.00
SDM-BB50	5.0mm	50 dots	\$149.00

### Skin Wings

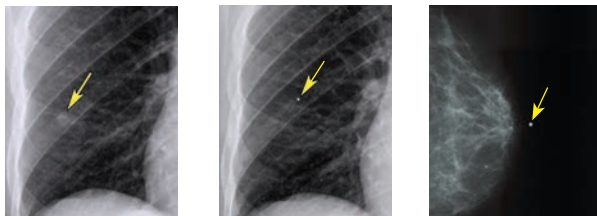
Artifact/nipple identifier. Extra support for larger, more prominent nipples. Lead-free. Easy-Peel tab.

CAT.#	Size	Item QTY	Price
SDM-W15	1.5mm	100 wings	\$79.00
SDM-W20	2.0mm	100 wings	\$79.00
SDM-W25	2.5mm	100 wings	\$79.00

### Skin Line/Scar Marker

Scar identifier. Line contours to complex scar tissue. Flexible adhesive tabs. No scissors required. Lead-free.

CAT.#	Style	Item QTY	Price
SDG-SS612	Mole	100 markers	\$94.00
SDW-SS612	Scar	100 markers	\$95.00



### Skin Strips

Used to identify masses or prominent nipples. Helps eliminate repeat exams. Lead-free. Easy-Peel tab.

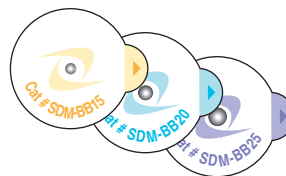
CAT.#	Size	Item QTY	Price
SDM-NS15	1.5mm	100 strips	\$113.00
SDM-NS20	2.0mm	100 strips	\$113.00
SDM-NS23	2.3mm	Digital Strips	\$113.00
SDM-NS25	2.5mm	100 strips	\$113.00

### Skin Arrows

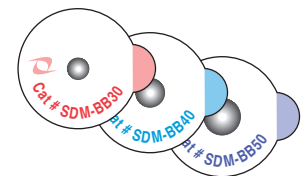
Arrow pointer is used to highlight areas of interest. Helps eliminate repeat exams. Lead-free. Easy-Peel tab.

CAT.#	Size	Item QTY	Price
SDM-A1	7.0mm	100 arrows	\$125.00
SDM-A612		100 arrows	\$79.00

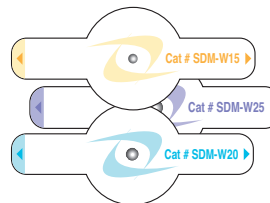
#### Skin Dots



#### Skin Dots



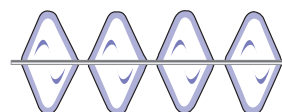
#### Skin Wings



#### SDM-BB23



#### Skin Line/Scar



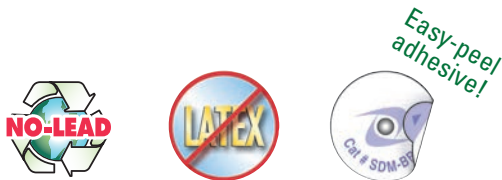
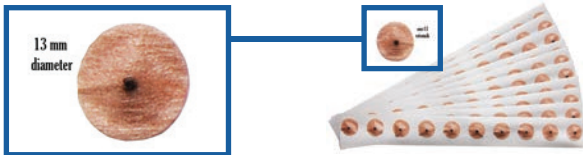
#### Skin Arrows



### Economy Nipple Markers

Used to mark nipple, lesion, scar, artifact, etc. Neutral color. Peel-off, self-adhesive backing. Non-sterile. Latex free.

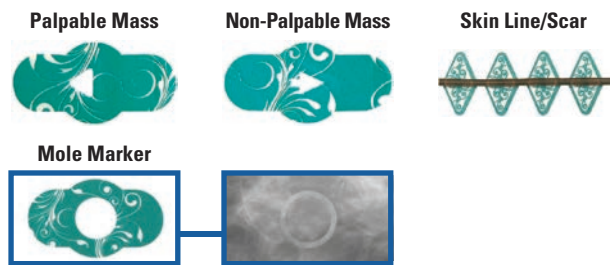
CAT.#	Size	Item QTY	Price
LNA-20	2.mm	100 markers	\$52.00



### NEW 2D/3D Tomo Skin Markers

Arrow pointer is used to highlight areas of interest. Helps eliminate repeat exams. Lead-free. Easy-Peel tab.

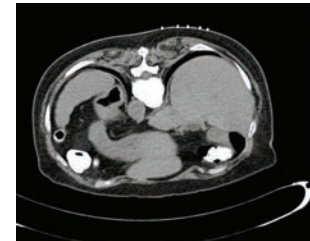
CAT.#	Style	Item QTY	Price
SDG-MSD3	Mole	Box of 100	\$85.00
SDM-TSD3	Palpable Mass	Box of 100	\$85.00
SDM-ASD3	Non-Palpable Mass	Box of 100	\$85.00
SDW-SSD3	Skin Line/Scar	Roll of 120'	\$102.00



### CT Skin Markers

These lead-free markers are used to highlight areas of interest for Radiology and CT. Feature an Easy-Peel tab!

CAT.#	Style	Size	Item QTY	Price
SDM-CT1	Dot	2.3mm	50 markers	\$105.00
SDM-CT2	Dot	4.0mm	100 markers	\$105.00



### CT Opaque Skin Line Markers

Opaque line skin markers are perfect for CT field edge markings and nearly all CT marking applications. RT Simulation, Treatment Planning and Diagnostic Radiography. Flat marker is perforated every 2" yielding 125 markers per box. Lead free and disposable.

CAT.#	Size	Item QTY	Price
SDW-CT05	0.5mm	138 markers	\$220.00
SDW-CT10	1.0mm	132 markers	\$220.00
SDW-CT15	1.5mm	125 markers	\$220.00
SDM-RT03	2.0mm	130 markers	\$203.00





## Multi-Modality Skin Markers

Provides an accurate reference point for CT, MRI, Therapy, Nuc Med, and PET procedures. Does not indent into the tissue or produce unwanted artifacts. These versatile markers can be used for marking masses, pain location, biopsies, or other areas of interest. Perfect for any modality with a clear accurate reference point. Easy to secure in place. Easy to remove. Manufactured with a medical grade adhesive. MRI safe. Disposable. 50 per box.



### CT / MRI

No center hole; appears as bright object on CT and MRI scans. Also highlights areas of interest for radiology and mammography.

**CAT# MM3007** | \$278.00  
50 markers per box



### CT / MRI / THERAPY / RADIOLOGY

2mm center hole suitable for conventional hypodermic needle. Highlights area of interest for Oncology and Radiology.

**CAT# MM3005** | \$245.00  
50 markers per box



### CT / MRI / NUC Med / PET

2mm center hole suitable for injection of radioisotope. Highlights area for Nuc. Med., PET, CT and MRI.

**CAT# MM3003** | \$333.00  
50 markers per box

## MRI Markers | For CT & MRI

Easily identifiable. Clearly and accurately communicates the area of interest or concern to the radiologist. Artifact free! Does not indent the skin, preventing a compromised image. 100% Latex-Free and hypoallergenic making it safe for patients. Markers are MR safe.



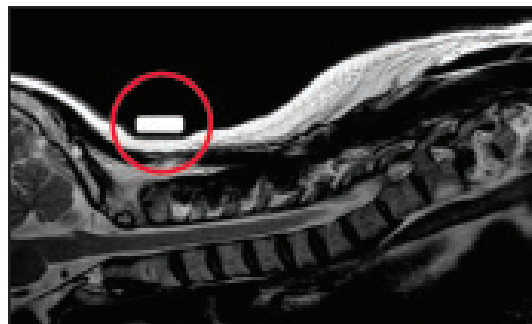
**CAT# SDM-MR2** | \$182.00  
40 capsules per box

**Capsule is 0.75"**



**CAT# SDM-MR3** | \$152.00  
40 capsules per box

**Capsule is 1.25"**





7117 Centennial Blvd.  
Nashville, TN 37209

P (800)251-2629 | P (615)350-7030

Send to [CustomerService@Techno-Aide.com](mailto:CustomerService@Techno-Aide.com)

# 2020 Marker Order Form

PO #		Date	
------	--	------	--

Ship-To Location Information	
Name	
Contact Number	
Email	
Address	

Customer Billing Information	
Name	
Contact Number	
Email	
Address	

	Technologist Name	Initials/ Numbers	Left Marker Color/Code	Right Marker Color/Code	Marker Style	QTY	Price	Total
EX	Devin Scott Mahoney	DSM	Blue	Red	TA-1			
1								
2								
3								
4								
5								
6								
7								
8								
9								
10								
11								
12								
13								
14								
15								
16								
17								
18								
19								
20								

Shipping Account #
Shipping Service

**PLEASE NOTE**  
Default shipping is via FedEx Ground. Minimum shipping charge is \$7.95. Shipping charges may vary by order.

Tax Estimate	
Shipping Estimate	
Order Total	



**ADMINISTRATION/MANUFACTURING**

7117 Centennial Blvd. Nashville, TN 37209

Orders can be placed online or sent to [orders@techno-aide.com](mailto:orders@techno-aide.com)

For official Quotes: [quotes@techno-aide.com](mailto:quotes@techno-aide.com)

Any questions can be directed to [customerservice@techno-aide.com](mailto:customerservice@techno-aide.com)

P: 800.251.2629 or 615.350.7030

F: 800.554.6275 or 615.350.7879

[techno-aide.com](http://techno-aide.com)