



Ultrasound

2020
PRODUCT
GUIDE

CHECK OUT WHAT'S NEW FOR 2020

Techno-Aide is ready to kick 2020 off with some amazing new products! Here are a few key highlights you can't afford to miss!

New Single Packet Gel Warmer | PG.3

Designed for single 20 gram gel packets.

New Arm Supports and Arm Support Kit | PG.15

The perfect solution for ultrasound scanning!

New Closed Cell Sponge Expansion | PG.11

Techno-Aide now offers over 30 standard closed cell sponges and in the most popular shapes and sizes! Shop our enormous in-stock inventory of individual closed cell sponges and kits!

Closed Cell foam is the future of positioning sponges and the facts speak for themselves

Cleanable, non-porous surface

Lighthweight and comfortable

Completely Artifact Free

100% radiolucent foam

Extremely durable

New Sani-Prime Disinfectant | PG.5

Available in spray or wipes, this incredible new disinfectant has an incredible 1 minute kill time!

Aquasonic Clear®

Same as Aquasonic® 100, but with no fragrance or color

Aquasonic 100 ultrasound transmission gel now has a partner in Aquasonic Clear. From Parker Laboratories, the world leader in ultrasound products. Aquasonic Clear is made from the purest water with absolutely no perfumes or dyes. As with Aquasonic 100, Aquasonic Clear is hypoallergenic and will consistently provide superior ultrasound transmission. Choose Aquasonic Clear—the benefits are visible!



CAT#	Size Per Unit	Units Per Box	Price Per Box
USC-025	250ml bottle	12	\$61.00
USC-100	1 liter bottle	6	\$215.00
USC-500	5 liter jug w/bottle	1	\$45.00

FEATURES:

- No Fragrance or color
- Water Soluble
- Hypoallergenic
- Bacteriostatic
- Non-irritating
- No Formaldehyde
- Not a spermicide
- Acoustically correct

Aquasonic® 100

Industry standard ultrasound transmission gel

Recommended for all procedures where a viscous gel is required. Acoustically correct for the broad range of frequencies used. Aqueous formula will not stain clothing or damage transducers. Hypoallergenic, bacteriostatic, non-sensitizing, non-irritating.

CAT#	Size Per Unit	Units Per Box	Price Per Box
USO-025	250ml bottle	12	\$61.00
USO-100	1 liter bottle	6	\$251.00
USO-500	5 liter jug w/bottle	1	\$45.00
USO-048	20g sterile pouch	48	\$140.00
USO-030	Non sterile pouch	100	\$73.00



Ultrasound Probe Covers

Acoustically transparent, minimizing distortion during scanning. Available in Latex or Latex-Free and Sterile or Non-Sterile. A variety of style and sizes for many applications and specialties: Radiology, Vascular, Cardiology, Urology, Phlebology, Emergency Medicine, OB/GYN, etc.

CAT#	Description	Dia. x Length	QTY/Case	Price/CS
LATEX PROBE COVERS, NON-STERILE				
USP-LN01CS	condom size, bulk pack	1.25" x 8"	1200	\$605.00
USP-LN03CS	condom size, individually wrapped	1.25" x 8"	1200	\$959.00
USP-LN04CS	extra-long, bulk	1.18" x 11.8"	600	\$1220.00
LATEX-FREE PROBE COVERS, NON-STERILE				
USP-FN03CS	rolled, individually wrapped	1" x 9"	600	\$968.00
USP-FN04CS	extra long, individually wrapped	1" x 12"	600	\$1022.00
LATEX-FREE PROBE COVERS, STERILE				
USP-FS01CS	semi-rolled and tapered, bulk pack	1" d x 9"	300	\$1429.00
USP-FS02CS	semi-rolled, wide abdominal	3.5" flat x 12"	75	\$506.00

Now sold by the CASE!



Ultrasound Gel Warmers

Steel Gel Warmers

“Uni-Sleeve” heating element adjusts up to 122°F. Illuminated On/Off switch with hospital grade cord. Stainless Steel with white powder coat finish. 5”w/8”w/11”w x 6”d x 5”h. Fits standard 250ml gel bottles.

CAT. #	Rating	Capacity	Price per Box
UGW-U01	UL/CSA approved	1	\$236.00
UGW-U02	UL/CSA approved	2	\$296.00
UGW-U03	UL/CSA approved	3	\$348.00
UGW-U04	UL/CSA approved	4	\$422.00



Composite Gel Warmers

Maintains constant temperature. Impact-resistant composite housing. Hospital grade power cord. Three Bottle Unit ONLY: - Illuminated On/Off switch. - Energy-saving lid. - 3-position thermostat (UGP-UL3): Low: 97°F / Medium: 102°F / High: 109°F. - Digital display thermostat (UGP-ULD): 1° increments from 97°F to 109°F. Single bottle unit is factory set at 104°F with a heat indicator lamp. Fits standard 250ml gel bottles.

CAT. #	Rating	Capacity	Price per Box
UGP-UL1	UL/CSA approved	1	\$276.00
UGP-UL3	UL/CSA approved	3	\$450.00
UGP-ULD	UL/CSA approved	3	\$499.00

Counter Top or Wall Mountable



NEW Single Packet Gel Warmer

Thermasonic gel warmer for single 20 gram gel packets. UL Listed. Hospital grade plug. Custom temperature control, while a powerful heating element brings 20 packettes of gel to temperature quickly and efficiently.

CAT. #	Rating	Capacity	Price per Box
UGP-USP	UL/CSA approved	1	\$373.00



Empty Dispenser Bottles

Standard 250ml bottles can be used for ready refills or as a back-up supply when filled from a larger container. Comes with a black tip cap and can be used in ultrasound gel warmers.

CAT. #	Size	QTY	Price
USB-012	250ml capacity	12	\$54.00
USB-012	12oz capacity	12	\$54.00



SANI-CLOTH® AF3 Alcohol-Free Wipes

Contains an excellent range of effectiveness. Cleans, disinfects, deodorizes & fragrance-free. Alcohol content: ALCOHOL-FREE (less than 0.016%). Recommended Contact Time: 3-minutes or less. Commonly used for **MAMMOGRAPHY, ULTRASOUND and most other IMAGING EQUIPMENT**. PLUS daily use items like table pads, sandbags, coated sponges, transfer boards, aprons, shields, vinyl straps... you name it. Meets CDC, OSHA and CMS Tag F441 guidelines.



CAT.#	Wipe Size	Quantity	Price
GWP-WAF	6" x 6.75"	tub of 160 wipes	\$20.00
GWP-WAFCS	6" x 6.75"	case of 12 tubs	\$235.00

SANI-CLOTH® BLEACH Wipes

Ideal for disinfecting high risk areas endemic with Multidrug-Resistant Organisms, Clostridium difficile spores, Norovirus, MRSA, and 50 other pathogenic microorganisms. Recommended Contact Time: 4-minutes. Compatible with a wide range of surfaces and equipment. Meets CDC, OSHA and CMS Tag F441 guidelines with a 1:10 bleach dilution.



CAT.#	Wipe Size	Quantity	Case Price
GWP-B12CS	6" x 10.5"	12 tubs of 75 wipes	\$308.00
GWP-BB14CS	7.5" x 15"	6 tubs of 65 wipes	\$224.00

EASY SCREEN™ Cleaning Wipes

Touch-Screen cleaner that "works at the speed of technology." Rapidly cleans dirt, grime, fingerprints and smudges from healthcare equipment. Helps prevent cross-contamination with a 70% isopropyl alcohol (IPA) solution. Commonly used for **Touch-Screens, Tablets, Lighting, and most other imaging equipment**. Effectively treats acrylic, polycarbonate, glass, stainless steel, and more.



CAT.#	Quantity	Case Price
GWP-ESW	12 tubs of 70 wipes	\$216.00

True Wipes

A new standard for Lint-Free Wipes

Having passed the USP-797 clean environment testing, True-Wipes are ideal for lint-free cleaning of ultrasound equipment and general work surfaces. These highly absorbent 9" x 9" lint-free wipes can be used with screen cleaner, alcohol, bleach, and peroxide to clean and disinfect. Wipes are packaged in a resealable double bag to avoid contamination from typical box dispensers. Reinforces your vital QA standards.



CAT.#	Quantity	Case Price
TW-200	1 bag of 200 wipes	\$58.00

NEW SANI-PRIME® Germicidal Cleaner

Powered by a proprietary blend of quaternary ammonium, isopropyl alcohol (IPA) and ethanol called ACCELOQUAT™, our new Sani-Cloth Prime wipes are the **ULTIMATE** option in germicidal cleaning. This unique combination delivers **SPEED** with a true 1-minute bactericidal, fungicidal, virucidal and tuberculocidal disinfectant—and the **POWER** to destroy over 50 microorganisms, including 17 multi-drug resistant organisms (MDROs) like 5 MRSA strains, 8 CRE strains and VRE.

Ideal for hard nonporous surfaces such as: bed railings, blood glucose meters (glucometers), cabinets, carts, chairs, counters, dental unit instruments trays, exam tables, gurneys, isolettes, IV poles, stethoscopes, stretchers, tables, telephones, toilet seats, diagnostic equipment, patient monitoring equipment, patient support and delivery equipment, and many more! EPA-registered intermediate level disinfectant. Meets CDC, OSHA and infection control guidelines.

SANI-PRIME® Germicidal Spray

GWP-PRIMES | \$164.00
(Case of 9, 32 oz bottles)

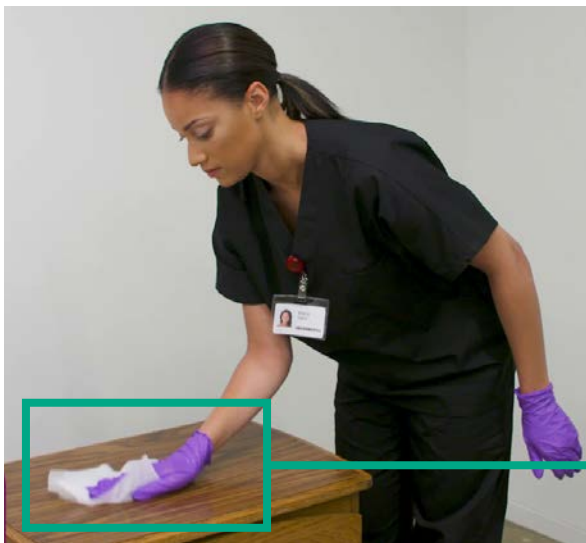
Germicidal spray comes in a 32 oz, easy-spray bottle.
Sold as a case of 9 bottles.



SANI-PRIME® Germicidal Wipes

GWP-PRIMET | \$235.00
(Case of 12 tubs)

Features 160 germicidal wipes per tub.
Sold as a case of 12 tubs.



SAVE TIME AND KILL OFF 50 PATHOGENS WITH A 1-MINUTE CONTACT TIME!

Blanket Warmer Cabinets

Designed for radiology departments, interventional suites, ER and OR, mammography, ultrasound, CT outpatient clinics and surgery centers. These stainless steel blanket warmers are adjustable from 98° to 180°F (37° to 82°C) with the help of an intelligent 4-digit LED controller. With no moving parts and an audio-visual temperature alarm, these heavy duty units are designed for safety and built to last. All three units come with hospital grade power cords. The two largest units include locking casters. Operational at either 120VAC or 220VAC. All units are UL & CSA approved.

COUNTERTOP UNIT

Holds 7 bed sized blankets.
16" x 24" x 20"
70 lbs.

#BW-210

Call for pricing

SHORT CABINET

Holds 25 bed sized blankets.
22" x 29" x 40"
170 lbs.

#BW-710

Call for pricing

TALL CABINET

Holds 50 bed sized blankets.
22" x 29" x 70"
350 lbs.

#BW-1400

Call for pricing



Anti-Fatigue Floor Mat for Sonographers

Provides comfort for standing during long exams. Blown vinyl-nitrile sponge base provides superior cushioning, while a solid vinyl-nitrile surface provides sure-footed protection from wear and tear. Comes with a 1-year warranty.

#TM-51323

\$75.00

PORTABLE, DURABLE
& DECREASES FATIGUE!



Elemental Ultrasound Stool with Tilting Backrest

Sit in comfort during extended ultrasound procedures. Back height adjustment. Tilting backrest. Pivot backrest. Tilting seat. Comes with a 7-year limited warranty. Black leather.

#ZONDI-316BLK

\$499.00

Product Dimensions

Seat: 19"(w) x 19"(d)

Back: 19"(w) x 17.5"(h)

Seat: 23"-33"(h)

Overall Size w/ Footring:

125"(w) x 25"(d) x 44.5-49.5"(h)



Capisco HAG Ergo Ultrasound Saddle Chair for Sonographers

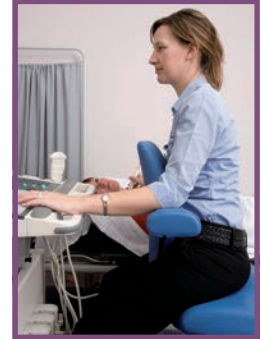
Optimize ergonomic safety while scanning patients. This Ergonomic Chair allows sonographers to bend, stretch, and move freely in the ultrasound suite between the exam table and ultrasound machine and still optimize postural alignment. Provides excellent support to reduce the stress of repetitive motion while ultrasound scanning. It reduces fatigue providing support for a long reach at any angle while allowing the sonographer to sit forward, sideways, or backwards. Includes foot ring support for additional bracing and positioning. Allows variation of position, movement, and posture. Default color is Black Eco.

CAT#

ZERG-HAGF

Price

Call for Pricing



Available color options!

ECO POLYESTER



Black Eco



Charcoal Eco



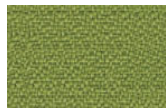
Gray Eco



Sapphire Eco



Burgundy Eco



Wasabi Eco



Cranberry Eco

Sapphire Eco



Wasabi Eco



Ultrasound Tables

We are proud to offer an enormous variety of ultrasound tables designed specifically for breast ultrasounds and biopsies. Call for pricing on all ultrasound tables.

Flat Top Imaging Tables

CAT. #	Description	Height Range	Overall Size (w) x (L)	Weight Capacity
BBET-01	Open base, power, flat top	18" - 35"	27" x 72"	450 lbs.
BBET-04	Bariatric open base, power, flat top	18" - 35"	40" x 72"	550 lbs.
BBET-61	General flat top ultrasound	21.5" - 37.5"	27" x 72"	550 lbs.
BBET-61X	Bariatric flat top ultrasound	21.5" - 37.5"	34" x 72"	600 lbs.

Adjustable Back Imaging Tables

CAT. #	Description	Height Range	Overall Size (w) x (L)	Weight Capacity
BBET-02	Open base, power, adj. back	18" - 35"	27" x 72"	450 lbs.
BBET-05	Bariatric open base, power, adj. back	18" - 35"	40" x 72"	550 lbs.
BBET-62	General ultrasound, adj. back	21.5" - 37.5"	27" x 76"	550 lbs.
BBET-62X	Bariatric ultrasound, adj. back	21.5" - 37.5"	34" x 72"	600 lbs.

Adjustable Back & Footrest Imaging Tables with Stirrups

CAT. #	Description	Height Range	Overall Size (w) x (L)	Weight Capacity
BBET-03	Open base, power, with stirrups	18" - 35"	27" x 76"	450 lbs.
BBET-69	Multi-use ultrasound	21.5" - 37.5"	27" x 76"	550 lbs.
BBET-69X	Bariatric multi-use ultrasound	21.5" - 37.5"	34" x 76"	550 lbs.

Key Specifications

- Ultra-strong uni-frame constructed base and top.
- Smooth electric height adjustment up and down
- Pneumatic, backrest cylinders are internally mounted on frame for a clean appearance
- Hardened bolts and self lubricating pivot points for extended use
- Dependable 110 volt motor
- Multiple add-ons available!
- Low heights help achieve ADA accessibility tax credit
- Dependable scissor-lift mechanism that does not need to roll on the floor
- 3-year limited warranty on frames, 2-year limited warranty on electronic components
- Made in the USA



NEW Ultrasound Exam Weight Bearing Step Platform

Techno-Aide’s Ultrasound Exam Step Platform permits efficient and accurate exams of the upper and lower leg during venous insufficiency studies and Doppler exams. The patient is placed in an optimal position for easy ergonomic scanning by the ultrasonographer promoting a better scanning environment. Designed for patients up to 350 lbs. Easy to store and move with medical grade casters. Easy to keep clean. Platform is made from stainless steel.

WMS-20 | \$1,299.00

Overall	Top Step	Bottom Step
54.5" tall	8" tall	9" tall
26" long	16" deep	10" deep
20" wide	19" wide	19" wide



WMS-10 | \$1,099.00

Overall	Top Step	Bottom Step
54.5" tall	8" tall	7" tall
28" long	11" deep	15" deep
15.5" wide	15.5" wide	15.5" wide



Easy Imaging With Ultrasound Platform

Ultrasound weight bearing step platform makes it easy to get accurate exams of upper and lower legs during venous insufficiency studies and Doppler exams.



Difficult Imaging Without Platform

Exams are difficult and uncomfortable for both patients and technologists without specialty designed platforms. Accurate exams of upper and lower legs are harder to achieve.



NEW Closed Cell Positioning Sponges

Closed cell foam is the future of radiology. This cleanable, non-porous foam is completely radiolucent. The charcoal grey, low density foam is extremely durable and comfortable for patients. Closed cell sponges offer 100% artifact free imaging.

STOCKED SPONGES

CAT.#	Description	Size (W x L x H)	Price
YXBC	45° Wedge	7" x 7" x 7"	\$89.00
YXBB	45° Wedge	7" x 14" x 7"	\$102.00
YXBD	45° Wedge	7" x 21" x 7"	\$85.00
YXEA	45° Wedge	9.5" x 24" x 9.5"	\$153.00
YX16	45° Wedge	9" x 30" x 9"	\$137.00
YXBU	30°/60°/90° Wedge	24" x 10" x 6"	\$132.00
YXBE	34° Wedge	7" x 4" x 3"	\$139.00
YXBJ	12° Wedge Set	9.5" x 7.25" x 2.25"	\$167.00
YXBI	15° Wedge Set	7" x 10" x 2"	\$114.00
YXAJ	Knee Wedge	22" x 13.5" x 7"	\$191.00
YXAK	7" Head Circle	7" Diameter	\$15.00
YXAT	Angular Bolster	16" x 12" x 7"	\$146.00
YXAY	Angular Bolster	16" x 12.5" x 7.25"	\$169.00
YXUZ	Ultrasound Wedge	20" x 20" x 6"	\$175.00
YXBV	Rectangle	2" x 6" x 6"	\$20.00
YXMB	Rectangle	1" x 8" x 10"	\$24.00
YXBN	Rectangle	3" x 14" x 18"	\$47.00
YXBL	Rectangle	3" x 7.5" x 10"	\$79.00
YXGM	Rectangle	4" x 18" x 24"	\$72.00

NON-STOCKED SPONGES

CAT.#	Description	Size (W x L x H)	Price
YX278	Square	12" x 12" x 12"	\$109.00
YX277	Square	10" x 10" x 10"	\$99.00
YX100	Rectangle	10" x 14" x 17"	\$128.00
YX169	Rectangle	6" x 18" x 42"	\$249.00
YX73	Rectangle	6" x 18" x 22"	\$153.00
YX126	Rectangle	6" x 8" x 10"	\$38.00
YX105	Rectangle	6" x 8" x 12"	\$40.00
YX70	Rectangle	5" x 10" x 24"	\$66.00
YX58	Rectangle	5" x 14" x 17"	\$75.00
YX67	Rectangle	5" x 3" x 7"	\$42.00
YX71	Rectangle	4" x 10" x 20"	\$77.00
YX62	Rectangle	4" x 10" x 14"	\$65.00
YX03	Rectangle	4" x 6" x 6"	\$29.00
YX250	Rectangle	3" x 9" x 24"	\$50.00
YX204	Rectangle	3" x 12" x 14"	\$40.00
YX156	Rectangle	3" x 6" x 6"	\$24.00
YX266	Rectangle	4" x 18" x 36"	\$140.00
YX06	Rectangle	2" x 8" x 24"	\$34.00
YX246	Rectangle	2" x 14" x 18"	\$51.00
YX29	Rectangle	2" x 8" x 16"	\$29.00
YXGF	Rectangle	2" x 10" x 12"	\$26.00
YXBT	Rectangle	2" x 4" x 6"	\$19.00
YXBR	Rectangle	1" x 4" x 6"	\$18.00
YXER	Rectangle	1" x 4" x 12"	\$19.00
YXBQ	Rectangle	0.5" x 4" x 6"	\$19.00
YXBH	16° Wedge Set	3.5" x 8" x 7"	\$164.00
YXBG	21° Wedge	4.625" x 10" x 10"	\$94.00
YXBF	27° Wedge	6" x 10" x 10"	\$99.00
YX51	33° Wedge	6.6" x 9" x 12"	\$112.00
YX167	45° Wedge	10" x 10" x 14"	\$135.00
YX56	45° Wedge	9.5" x 13.75" x 24"	\$180.00
YX209	45° Wedge	6" x 12" x 38"	\$256.00
YX75	45° Wedge	10" x 10" x 16"	\$152.00
YX76	45° Wedge	3" x 8" x 3"	\$65.00

**Stocked sponges
are marked Blue!**



NEW Closed Cell Positioning Sponge Kits

Closed cell foam is the future of radiology. This cleanable, non-porous foam is completely radiolucent. The charcoal grey, low density foam is extremely durable and comfortable for patients. Closed cell sponges offer 100% artifact free imaging.

STOCKED KITS

GENERAL KIT 1 | YZCC - \$199.00

CAT.#	Description	Size (W x L x H)	QTY
YXBD	45° Degree Body Wedge	7" x 21" x 7"	1
YXAA	Oblique Finger Block	5" x 5" x 3"	1
YXAK	Circular Head Block	7" Diam.	1
YXBI	15° Degree Wedge Set	7" x 10" x 2"	1
YXBV	Rectangle Block	6" x 6" x 2"	1
YXMB	Rectangle Block	8" x 10" x 2"	1
YXBN	Rectangle Block	14" x 18" x 3"	1

GENERAL KIT A | YZGA - \$340.00

CAT.#	Description	Size (W x L x H)	QTY
YXBC	45° Degree Body Wedge	7" x 7" x 7"	1
YXAK	Circular Head Block	7" Diam.	1
YXBI	15° Degree Wedge Set	7" x 10" x 2"	1
YXBE	34° Degree Wedge Set	7" x 4" x 3"	1
YXBL	Rectangle	4" x 18" x 24"	1

GENERAL KIT B | YZGB - \$536.00

CAT.#	Description	Size (W x L x H)	QTY
YXBC	45° Degree Body Wedge	7" x 7" x 7"	1
YXAA	Oblique Finger Block	5" x 5" x 3"	1
YXAK	Circular Head Block	7" Diam.	1
YXBI	15° Degree Wedge Set	7" x 10" x 2"	1
YXBE	34° Degree Wedge Set	7" x 4" x 3"	1
YXBJ	12° Degree Wedge Set	9.5" x 7.25" x 3"	1
YXBL	Rectangle Block	3" x 7.5" x 10"	1

NON-STOCKED KITS

GENERAL KIT 2 | YZG2 - \$715.00

CAT.#	Description	Size (W x L x H)	QTY
YXAK	Circular Head Block	7" Diam.	1
YXMB	Rectangle Block	8" x 10" x 2"	2
YXBE	34° Degree Wedge Set	7" x 4" x 3"	1
YXBH	16° Degree Wedge Set	3.5" x 8" x 7"	1
YXBC	45° Degree Body Wedge	7" x 7" x 7"	1

TRIANGLE WEDGE KIT | YZTK - \$685.00

CAT.#	Description	Size (W x L x H)	QTY
YXBG	21° Triangle Wedge	4.6" x 10" x 10"	2
YX51	33° Triangle Wedge	6.6" x 9" x 12"	2
YX167	45° Triangle Wedge	10" x 10" x 14"	1
YXBF	27° Triangle Wedge	6" x 10" x 10"	2

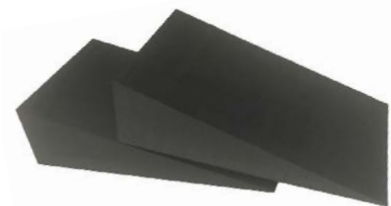
Stocked sponges are marked **Blue!**



#YXAK



#YXMB



#YXBI

NEW Closed Cell Positioning Sponge Kits

Closed cell foam is the future of radiology. This cleanable, non-porous foam is completely radiolucent. The charcoal grey, low density foam is extremely durable and comfortable for patients. Closed cell sponges offer 100% artifact free imaging.

STOCKED KITS

CLINIC KIT A | YZCA - \$181.00

CAT.#	Description	Size (W x L x H)	QTY
YXBB	45° Degree Body Wedge	7" x 14" x 7"	1
YXAA	Oblique Finger Block	5" x 5" x 3"	1
YXAK	Circular Head Block	7" Diam.	1
YXBI	15° Degree Wedge Set	7" x 10" x 2"	1

CLINIC KIT B | YZCB - \$679.00

CAT.#	Description	Size (W x L x H)	QTY
YXBD	45° Body Wedge	7" x 21" x 7"	1
YXAA	Oblique Finger Block	5" x 5" x 3"	1
YXAK	Circular Head Block	7" Diam.	1
YXBI	15° Wedge Set	7" x 10" x 2"	1
YXBL	Rectangle	3" x 7.5" x 10"	1
YXBC	45° Body Wedge	7" x 7" x 7"	1
YXBE	34° Wedge Set	7" x 4" x 3"	1
YXBJ	12° Wedge Set	9.5" x 7.25" x 3"	1

Don't see the kit you're looking for? We are happy to help build your perfect solution!
Contact us today

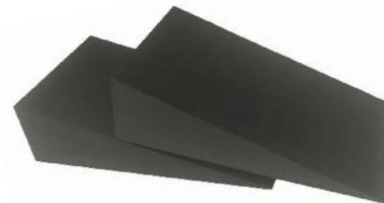
Stocked sponges are marked **Blue!**



#YXAK



#YXBN



#YXBI

Stocked Vinyl-Covered Positioning Bolsters

Reusable blocks, bolsters, and wedges are manufactured from firm, high-density urethane foam. Royal Blue outer covering is durable, heavy gauge, reinforced vinyl. Seams are sewn and tear resistant. Easy to clean Bolsters are **RADIOLUCENT**. Seams may show. Provides excellent support for a wide variety of imaging needs.

STOCKED BOLSTERS

CAT.#	Description	Size (W x L x H)	Price
YVF40	26° Knee Wedge	13" x 17" x 6"	\$320.00
YVFC	20° Wedge	24" x 18" x 6"	\$193.00
YVFD	45° Wedge	8" x 16" x 8"	\$219.00
YVFE	20° Incline Wedge	20" x 32" x 12"	\$277.00
YVFM	Knee Wedge	16" x 28.2" x 8.25"	\$370.00
YVFO	45° Spinal Wedge	7" x 21" x 7"	\$248.00
YVFU	30°/60°/90° Wedge	10" x 24" x 6"	\$227.00
YVJV	Comfort Pillow w/ Strap	16" x 25" x 8.25"	\$288.00
YVFZ	Endo-Ultrasound Wedge	20" x 22" x 6"	\$484.00
YVFG	Rectangle	8" x 12" x 16"	\$106.00
YVFH	Rectangle	12" x 14" x 3"	\$72.00
YVFI	Rectangle	24" x 15" x 3"	\$127.00
YVFJ	Rectangle	8" x 12" x 3"	\$81.00
YVFK	Rectangle	20" x 13" x 3"	\$118.00
YVFP	Decubitus Block	18" x 24" x 4"	\$227.00
YVFQ	DEXA Block	20" x 20" x 12"	\$351.00
YVFB	Semi-Cylinder	8" x 18" x 6"	\$127.00

Stocked sponges are marked Blue!



Body Comfort Wedge Pillow

High density foam enclosed in a durable, heavy gauge, reinforced Royal Blue vinyl covering. Supports patient's head and shoulders when arms must be held above head. Dual hand grips reduce patient fatigue. Measures: 16" x 25" x 8.25"

#YVJV | \$288.00



Easy access grips reduces patient fatigue

Non-Stocked Vinyl-Covered Positioning Bolsters

NON-STOCKED WEDGE BOLSTERS

CAT.#	Description	Size (W x L x H)	Price
YVF155	13.5° Knee Wedge	10" x 10" x 3"	\$450.00
YVBH	16° Knee Wedge	8.5" x 11" x 3.5"	\$287.00
YVBG	21° Knee Wedge	12.25" x 14.25" x 4.5"	\$329.00
YVF156	21° Knee Wedge	10" x 10" x 4.6"	\$455.00
YVDB	30° Knee Wedge	28" x 27" x 16"	\$366.00
YVDC	30° Knee Wedge	9" x 30" x 9"	\$221.00
YVF126	30° Knee Wedge	23" x 11" x 6.5"	\$196.00
YVDA	45° Knee Wedge	14" x 28" x 14"	\$220.00
YVF129	45° Knee Wedge	5" x 15" x 5"	\$103.00
YVF178	45° Knee Wedge	9" x 30" x 9"	\$436.00

NON-STOCKED SQUARE BOLSTERS

CAT.#	Description	Size (W x L x H)	Price
YVF172	Square	18" x 18" x 4"	\$369.00
YVF42	Square	12" x 12" x 9"	\$539.00

NON-STOCKED WEDGE BOLSTERS

CAT.#	Description	Size (W x L x H)	Price
YVF161	Cylinder	4.5" x 18" x 4.5"	\$384.00
YVF167	Cylinder	4" x 48" x 4"	\$152.00
YVF53	Cylinder	4.5" x 12" x 4.5"	\$401.00
YVFA	Cylinder	8" x 24" x 8"	\$155.00
YVFS	Cylinder	6" x 17" x 6"	\$193.00
YVF119	Semi-Cylinder	12.75" x 22.75" x 8.75"	\$293.00
YVF164	Semi-Cylinder	24" x 36" x 16"	\$695.00
YVF180	Semi-Cylinder	6" x 12" x 4.5"	\$418.00
YVF46	Semi-Cylinder	14" x 20" x 5"	\$375.00

**Stocked sponges
are marked Blue!**

NON-STOCKED RECTANGLE BOLSTERS

CAT.#	Description	Size (W x L x H)	Price
YVF110	Rectangle	6" x 12" x 1"	\$105.00
YVF109	Rectangle	6.5" x 9" x 1.5"	\$118.00
YVF137	Rectangle	5" x 11" x 1.5"	\$142.00
YVF133	Rectangle	4.25" x 34" x 2"	\$144.00
YVF160	Rectangle	6" x 8" x 2"	\$316.00
YVF73	Rectangle	14" x 24" x 2"	\$112.00
YVF75	Rectangle	4.5" x 22" x 2"	\$87.00
YVF78	Rectangle	17" x 25" x 2"	\$420.00
YVF79	Rectangle	7.5" x 8.5" x 2"	\$127.00
YVF93	Rectangle	24" x 36" x 2"	\$278.00
YVF170	Rectangle	12" x 15" x 2.5"	\$338.00
YVF60	Rectangle	14" x 23" x 2.5"	\$138.00
YVF74	Rectangle	13" x 22" x 2.5"	\$364.00
YVF105	Rectangle	14" x 18" x 3"	\$350.00
YVF136	Rectangle	5" x 11" x 3"	\$214.00
YVF177	Rectangle	12" x 4" x 3"	\$326.00
YVF107	Rectangle	20" x 24" x 4"	\$280.00
YVF108	Rectangle	20" x 7.5" x 4"	\$180.00
YVF120	Rectangle	18" x 36" x 4"	\$289.00
YVF134	Rectangle	5" x 30" x 4"	\$196.00
YVF57	Rectangle	3" x 14" x 17"	\$145.00
YVF179	Rectangle	4" x 10" x 4"	\$315.00
YVF182	Rectangle	9.5" x 9.5" x 4"	\$372.00
YVF184	Rectangle	10" x 20" x 4"	\$386.00
YVF102	Rectangle	8" x 10" x 6"	\$155.00
YVF132	Rectangle	12" x 18" x 6"	\$249.00
YVF175	Rectangle	14" x 14" x 6"	\$403.00
YVF186	Rectangle	8" x 20" x 6"	\$385.00
YVF188	Rectangle	10" x 20" x 6"	\$396.00
YVF169	Rectangle	6.5" x 21" x 6.5"	\$341.00
YVFT	Rectangle	16" x 12" x 7"	\$331.00
YVF77	Rectangle	6" x 18" x 7.5"	\$320.00
YVF56	Rectangle	2" x 8" x 10"	\$106.00
YVF99	Rectangle	14" x 17" x 10"	\$476.00
YVF187	Rectangle	16" x 16" x 12"	\$463.00
YVF43	Rectangle	12" x 12" x 12"	\$611.00
YVF84	Rectangle	14" x 17" x 12"	\$446.00
YVFW	Rectangle	16" x 18" x 12"	\$383.00
YVF176	Rectangle	14.5" x 18" x 13"	\$480.00

Vinyl-Covered Positioning Bolster Kits

Reusable blocks, bolsters, and wedges are manufactured from firm, high-density urethane foam. Royal Blue outer covering is durable, heavy gauge, reinforced vinyl. Seams are sewn and tear resistant. Easy to clean Bolsters are RADIOLUCENT. Seams may show. Provides excellent support for a wide variety of imaging needs.

GENERAL KIT 1 | YSU1 - \$399.00

CAT.#	Description	Size (W x L x H)	QTY
YVFB	Semi-Cylinder	8" x 18" x 6"	1
YVFG	Rectangle	8" x 12" x 16"	2
YVFJ	Rectangle	8" x 12" x 3"	1

GENERAL KIT 2 | YSU2 - \$275.00

CAT.#	Description	Size (W x L x H)	QTY
YVFG	Rectangle	8" x 12" x 16"	2
YVFJ	Rectangle	8" x 12" x 3"	1

GENERAL KIT 3 | YSU3 - \$429.00

CAT.#	Description	Size (W x L x H)	QTY
YVFB	Semi-Cylinder	8" x 18" x 6"	1
YVFD	45° Wedge	8" x 16" x 8"	1
YVFG	Rectangle	8" x 12" x 16"	1

GENERAL KIT 4 | YSU4 - \$1015.00

CAT.#	Description	Size (W x L x H)	QTY
YVFA	Cylinder	8" x 24" x 8"	1
YVFB	Semi-Cylinder	8" x 18" x 6"	1
YVFC	20° Wedge	24" x 18" x 6"	1
YVFD	45° Wedge	8" x 16" x 8"	1
YVFG	Rectangle	8" x 12" x 16"	1
YVFH	Rectangle	12" x 14" x 3"	1
YVFJ	Rectangle	8" x 12" x 3"	1
YVFK	Rectangle	20" x 13" x 3"	1

GENERAL KIT 5 | YSU5 - \$825.00

CAT.#	Description	Size (W x L x H)	QTY
YVFB	Semi-Cylinder	8" x 18" x 6"	1
YVFC	20° Wedge	24" x 18" x 6"	1
YVFD	45° Wedge	8" x 16" x 8"	1
YVFJ	Rectangle	8" x 12" x 3"	1
YVFO	45° Spinal Wedge	7" x 21" x 7"	1

GENERAL KIT 6 | YSU6 - \$775.00

CAT.#	Description	Size (W x L x H)	QTY
YVFJ	Rectangle	8" x 12" x 3"	1
YVFK	Rectangle	20" x 13" x 3"	1
YVFO	45° Spinal Wedge	7" x 21" x 7"	1
YVFM	Knee Wedge	16" x 28.2" x 8"	1

NEW ARM SUPPORT KIT | YSU7 - \$695.00

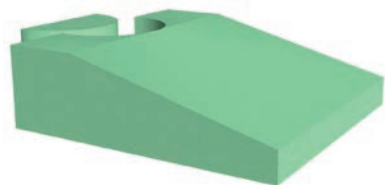
CAT.#	Description	Size (W x L x H)	QTY
YVF136	Rectangular Block	3" x 5" x 11"	1
YVF137	Rectangular Block	1.5" x 5" x 11"	1
YVBH	16° Wedge	3.5" x 8.5" x 11"	1
YVFB	Roll Cushion	6" x 8" x 18"	1



Dimensions listed as "Width x Length x Height." May be larger than traditional style.

Ultrasound positioning aides

Overall dimensions: Width x Length x Height. May be larger than traditional style.



COATED

NON-COATED

#YCUZ
\$275.00

#YBUZ
\$112.00

ENDO-ULTRASOUND WEDGE
20 x 20 x 6



#YCEQ
\$178.00

#YFEQ
\$78.00

PERINEAL WEDGE
20 x 20 x 3



#YCAJ
\$172.00

#YFAJ
\$56.00

ANGULAR BOLSTER
14 x 22.5 x 7.25

Non-Stealth Traditional Bariatric Wedges

COATED

NON-COATED



#YCCG
\$153.00

#YFCG
\$47.00

45° BARIATRIC WEDGE
9 x 30 x 9



#YCHB
\$182.00

#YFHB
\$55.00

BARIATRIC SPINAL WEDGE
7 x 24 x 7



#YCFD
\$120.00

#YFFD
\$37.00

45° SPINAL WEDGE
7 x 21 x 7



#YCAJ
\$315.00

#YFAJ
\$109.00

KNEE WEDGE SUPPORT
22 x 20 x 7

Coated-Only Specialty Sponge Kits

ULTRASOUND SPECIALTY BREAST OR PARACENTESIS

#YSU8
\$382.00



YCBG - 21° Wedge
YCFD - 45° Spinal Wedge
YCBU - 30°-60°-90° Multi-Angle Wedge

GENERAL / PERINEAL KIT

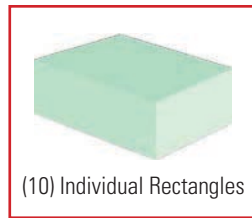
#YSRD
\$572.00



YCAV - Angular Bolster
YCEE - 45° Echocardiography Wedge
YCUZ - Echo-Ultrasound Wedge

ULTRASONOGRAPHER SCANNING KIT 3

#YSRC
\$280.00



(10) Individual Rectangles

Dimensions
listed as
W x L x H

YCBT - (10) Individual Non-Stealth Rectangles

Ultrasound Biopsy Stretcher Chair

Ideal for use as a procedural chair or treatment table. The chair's versatility allows it to be used for pre-induction, transport, treatment, and recovery. Easy controls from either side of the chair allow height adjustment for optimal patient positioning. Seat height ranges from 23.5" to 31.5". Premium 5" Tente casters make for easy maneuvering. Backrest and leg section adjust from 90° upright to full spine, and 10° Trendelenburg. Features fold-down handrails and 3" comfort mattress. Weight capacity: 325 lbs.

#CRH-MBC
(Call for Price)





ADMINISTRATION/MANUFACTURING

7117 Centennial Blvd. Nashville, TN 37209

Orders can be placed online or sent to orders@techno-aide.com

For official Quotes: quotes@techno-aide.com

Any questions can be directed to customerservice@techno-aide.com

P: 800.251.2629 or 615.350.7030

F: 800.554.6275 or 615.350.7879

techno-aide.com