



# Veterinary

2020  
PRODUCT  
GUIDE

## CHECK OUT WHAT'S NEW FOR 2019

Techno-Aide is ready to kick 2020 off with some amazing new products! Here are a few key highlights you can't afford to miss!

### **The Largest Selection of Sandsocks and Sandbags Available**

Techno-Aide is proud to offer the largest variety of sandbags and sandsocks on the market! Shop our newest shapes, sizes and kits. Check out some of our new options below:

**Expanded Sandsock and Sandsock Kit Selection | PG.9**

**Expanded Sandbag and Sandbag Kit Selection | PG.7 & 8**

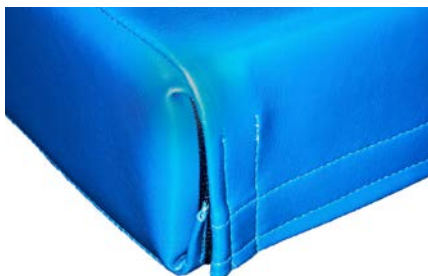
### **Completely Sealed Vinyl Bolsters | PG.4**

Our vinyl fabric is now sewn and welded at all seams to offer a completely sealed and secure bolster! These premium sealed corners inhibit the growth of any harmful bacteria inside and out. Compared to other unsealed and unsanitary, "hook and loop" closures, these bolsters are the clear and easy choice.

Completely Sealed



Unsealed & Unsanitary

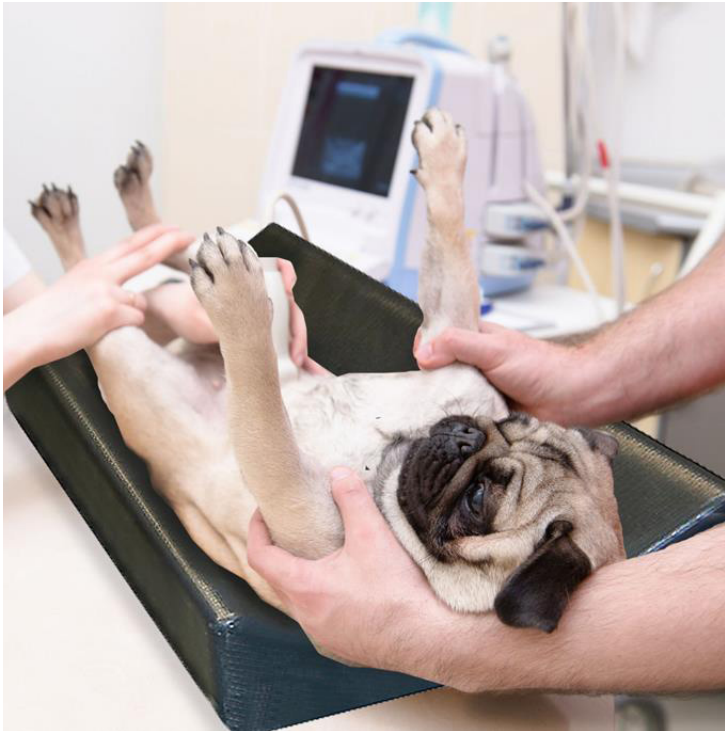
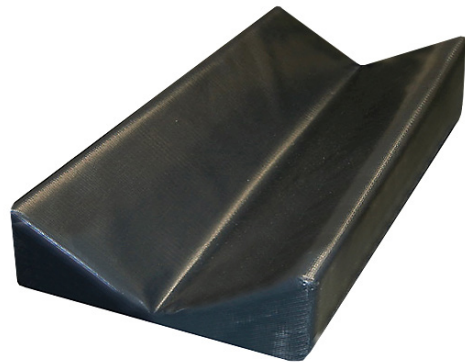


## Veterinary Ultrasound Immobilizer

These Vinyl Covered Positioning devices provide excellent stability during ultrasound positioning. This reusable positioner is manufactured from a firm high density urethane foam and is covered in heavy gauge, easy to clean, reinforced vinyl. Seams are sewn and tear resistant. These immobilizers are radiolucent, however seams on the edge may show.

CAT#	Positioner	L x W x H	Price
YVFCE	Veterinary Ultrasound Immobilizer	48" x 18" x 5"	\$398.00
YVFCS	Veterinary Ultrasound Immobilizer	36" x 18" x 5"	\$203.00

1" at the lowest point  
and  
5" at the highest point

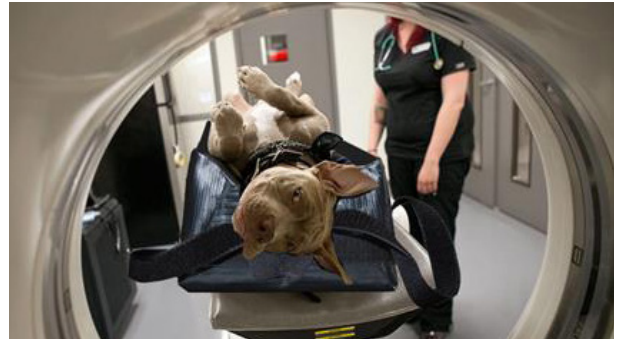


## Veterinary Immobilizers

Veterinary Immobilizers from Techno-Aide save time with positioning. Available in a variety of sizes to meet all your imaging needs. Available in Black or Royal Blue.

### Covered stabilizer sponges:

These immobilizers are covered with Techno-Tuff nylon-reinforced vinyl that is virtually claw proof! Features four hook and loop straps to help secure limbs while in position. Versatile for several applications.



CAT. #	Size	L x W x H	Price
QYVCA	SMALL	10" x 4" x 3"	\$59.00
QYVCB	MEDIUM	15" x 7" x 5"	\$79.00
QYVCC	LARGE	24" x 11" x 7"	\$105.00
QYVCD	X-LARGE	36" x 14" x 9"	\$155.00
QYVCK	Set of all 4		\$355.00

### NEW

QYVCE	2XL	47.5" x 18" x 12"	\$215.00
-------	-----	-------------------	----------



Available in Royal Blue and Black

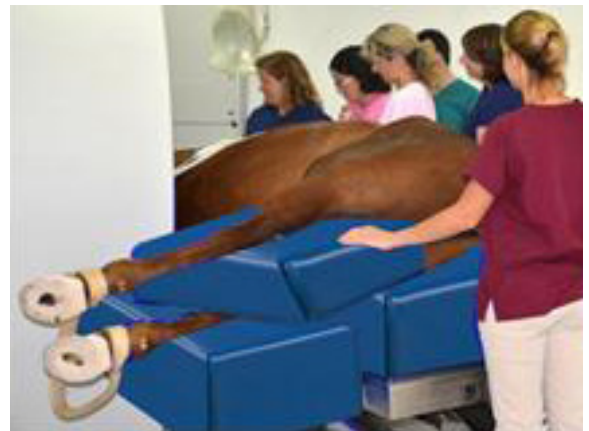
Included Hook & Loop straps help secure limbs while in any position!



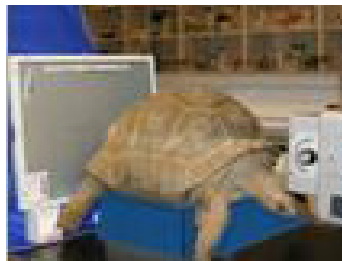
## Veterinary Positioning Blocks

Vinyl covered positioning devices provide excellent stability during any examination. Reusable blocks, bolsters and wedges are manufactured from firm, high density, urethane foam. Royal blue outer covering is durable, heavy gauge, reinforced vinyl. **(Not claw or teeth proof)** Seams are sewn and tear resistant. Easy to clean and radiolucent, however seams on edge may show. Provides your animals excellent support for a wide variety of imaging needs.

CAT #	Positioner	L x W x H	Price
YVF45	Cylinder	6" x 26" x 6"	\$224.00
YVFA	Cylinder	8" x 24" x 8"	\$157.00
YVFB	Semi-Cylinder	8" x 18" x 6"	\$127.00
YVFJ	Rectangle	8" x 12" x 3"	\$81.00
YVFG	Rectangle	8" x 12" x 6"	\$106.00
YVFH	Rectangle	12" x 14" x 3"	\$72.00
YVF78	Rectangle	25" x 17" x 2"	\$420.00
YVFK	Rectangle	20" x 13" x 3"	\$118.00
YVFI	Rectangle	24" x 15" x 3"	\$127.00
YVF43	Square	12" x 12" x 12"	\$611.00
YVF42	Square	12" x 12" x 9"	\$539.00
YVFP	Decubitus Block	18" x 24" x 4"	\$227.00
YVFO	DEXA Block	20" x 20" x 12"	\$351.00
YVFU	30°/60°/90° Wedge	10" x 24" x 6"	\$227.00
YVFO	45° Wedge	7" x 21" x 7"	\$248.00
YVFD	45° Wedge	8" x 16" x 8"	\$219.00
YVFC	20° Wedge	24" x 18" x 6"	\$193.00
YVDB	30° Wedge	28" x 27" x 16"	\$366.00
YVDA	45° Wedge	14" x 28" x 14"	\$220.00
YVFE	20° Incline Wedge	20" x 32" x 12"	\$277.00
YVFF	50° Wedge	20" x 32" x 12"	\$496.00



**Stocked bolsters  
are marked Blue!**



## Vinyl-Covered Positioning Bolster Kits

These reusable blocks, bolsters and wedges are manufactured from firm, high density, urethane foam. Royal blue outer covering is durable, heavy gauge, reinforced vinyl. **(Not claw or teeth proof)** Seams are sewn and tear resistant. Easy to clean and radiolucent, however seams on edge may show. Provides your animals excellent support for a wide variety of imaging needs.

### GENERAL KIT 1 | YSU1 - \$399.00

CAT.#	Description	Size (W x L x H)	QTY
YVFB	Semi-Cylinder	8" x 18" x 6"	1
YVFG	Rectangle	8" x 12" x 16"	2
YVFJ	Rectangle	8" x 12" x 3"	1

### GENERAL KIT 2 | YSU2 - \$275.00

CAT.#	Description	Size (W x L x H)	QTY
YVFG	Rectangle	8" x 12" x 16"	2
YVFJ	Rectangle	8" x 12" x 3"	1

### GENERAL KIT 3 | YSU3 - \$429.00

CAT.#	Description	Size (W x L x H)	QTY
YVFB	Semi-Cylinder	8" x 18" x 6"	1
YVFD	45° Wedge	8" x 16" x 8"	1
YVFG	Rectangle	8" x 12" x 16"	1

### GENERAL KIT 4 | YSU4 - \$1015.00

CAT.#	Description	Size (W x L x H)	QTY
YVFA	Cylinder	8" x 24" x 8"	1
YVFB	Semi-Cylinder	8" x 18" x 6"	1
YVFC	20° Wedge	24" x 18" x 6"	1
YVFD	45° Wedge	8" x 16" x 8"	1
YVFG	Rectangle	8" x 12" x 16"	1
YVFH	Rectangle	12" x 14" x 3"	1
YVFJ	Rectangle	8" x 12" x 3"	1
YVFK	Rectangle	20" x 13" x 3"	1

### GENERAL KIT 5 | YSU5 - \$825.00

CAT.#	Description	Size (W x L x H)	QTY
YVFB	Semi-Cylinder	8" x 18" x 6"	1
YVFC	20° Wedge	24" x 18" x 6"	1
YVFD	45° Wedge	8" x 16" x 8"	1
YVFJ	Rectangle	8" x 12" x 3"	1
YVFO	45° Spinal Wedge	7" x 21" x 7"	1

### GENERAL KIT 6 | YSU6 - \$775.00

CAT.#	Description	Size (W x L x H)	QTY
YVFJ	Rectangle	8" x 12" x 3"	1
YVFK	Rectangle	20" x 13" x 3"	1
YVFO	45° Spinal Wedge	7" x 21" x 7"	1
YVFM	Knee Wedge	16" x 28.2" x 8"	1

**Don't see the kit you're looking for? We are happy to help build your perfect solution!**  
**Contact us today**



## Veterinary Immobilizer Sponges

Positioning devices are one of the most important accessory items used in veterinary radiography. Their use is important for the obvious difficulties of maintaining position of the animal throughout an examination.

### Coated

CAT#	Size	W x L x H	Price
YCCA	SMALL	7" x 12.5" x 3"	\$58.00
YCCB	MEDIUM	11.5" x 19.75" x 5"	\$123.00
YCCC	LARGE	11" x 30.5" x 7"	\$279.00
YCCD	X LARGE	14" x 44" x 9"	\$369.00

### Non-Coated

CAT#	Size	W x L x H	Price
YFCA	SMALL	7" x 12.5" x 3"	\$26.00
YFCB	MEDIUM	11.5" x 19.75" x 5"	\$42.00
YFCC	LARGE	11" x 24" x 7"	\$79.00
YFCD	X LARGE	14" x 36" x 9"	\$140.00



### Immobilizer sponges

**Non-coated sponges** are manufactured from a soft open cell polyurethane foam that provides excellent support and comfort. Not cleanable. **NOT Claw or teeth proof.**

**Coated sponges** are the same standard light green sponge above, but coated with a medical grade durable and easy to clean surface that is resistant to blood, Betadine, barium, alcohol, oils, urine, and feces. Ideal for easy cleaning.

**NOT Claw or teeth proof.**

FOUR SIZES  
TO CHOOSE  
FROM!

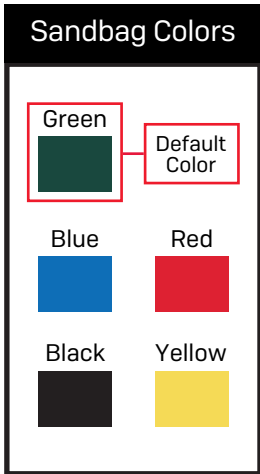


# Sandbags

All sandbags are filled with premium sand and come ready to use. Heat sealed inner sleeve prevents the leakage of sand. All seams are sewn and tear resistant. Deep green outer cover is heavy gauge, reinforced vinyl. Every sandbag includes a reinforced webbing handle and weight ID tag.

**CUSTOM SIZES AVAILABLE!**

CAT.#	Weight (lbs.)	Dimensions	Price
SBP-01	1 lb.	4"(w) x 5" (L)	\$24.00
SBP-02	2 lb.	4"(w) x 9" (L)	\$24.00
SBP-03	3 lb.	5"(w) x 9" (L)	\$24.00
SBP-05	5 lb.	7"(w) x 9" (L)	\$32.00
SBF-05	5 lb.	6"(w) x 12" (L)	\$32.00
SBC-05	5 lb.	9"(w) x 9" (L)	\$32.00
SBG-07	7 lb.	10"(w) x 10" (L)	\$36.00
SBF-07	7 lb.	6"(w) x 14" (L)	\$36.00
SBF-10	10 lb.	7"(w) x 16" (L)	\$37.00
SBC-10	10 lb.	11"(w) x 11" (L)	\$37.00
SBP-12	12 lb.	7"(w) x 24" (L)	\$38.00
SBP-15	15 lb.	10.5"(w) x 18" (L)	\$41.00
SBC-15	15 lb.	10.5"(w) x 15" (L)	\$42.00
SBG-15	15 lb.	12"(w) x 12" (L)	\$41.00
SBC-20	20 lb.	12"(w) x 14" (L)	\$42.00
SBC-27	27 lb.	18.5"(w) x 18.5" (L)	\$52.00
SBG-02	2 lb.	7"(w) x 7" (L)	\$23.00
SBR-06	6 lb.	8.5"(w) x 10" (L)	\$36.00
SBR-08	8 lb.	8.5"(w) x 12" (L)	\$36.00
SBR-20	20 lb.	10.5"(w) x 22" (L)	\$41.00
SBR-23	23 lb.	11"(w) x 23" (L)	\$50.00



Sandbags can be stacked to provide extra support during procedures!





# Sandbag Kits

Stack up savings by ordering kits!

### General Set A | SBK-GA - \$253.00

CAT.#	Weight (lbs.)	Dimensions	Quantity
SBP-03	3 lb.	5"(w) x 9" (L)	2
SBP-05	5 lb.	7"(w) x 9" (L)	1
SBF-05	5 lb.	6"(w) x 12" (L)	1
SBF-07	7 lb.	6"(w) x 14" (L)	2
SBC-10	10 lb.	11"(w) x 11" (L)	2

### General Set B | SBK-GB - \$205.00

CAT.#	Weight (lbs.)	Dimensions	Quantity
SBP-03	3 lb.	5"(w) x 9" (L)	2
SBF-07	7 lb.	6"(w) x 14" (L)	2
SBF-10	10 lb.	7"(w) x 16" (L)	2

### General Set C | SBK-GC - \$261.00

CAT.#	Weight (lbs.)	Dimensions	Quantity
SBP-01	1 lb.	4"(w) x 5" (L)	1
SBP-03	3 lb.	5"(w) x 9" (L)	1
SBF-05	5 lb.	6"(w) x 12" (L)	1
SBP-05	5 lb.	7"(w) x 9" (L)	1
SBG-05	7 lb.	10"(w) x 10" (L)	1
SBF-07	7 lb.	6"(w) x 14" (L)	1
SBF-10	10 lb.	7"(w) x 16" (L)	1
SBC-15	15 lb	12"(w) x 12" (L)	1

### General Set 1 | SBK-CF1 - \$225.00

CAT.#	Weight (lbs.)	Dimensions	Quantity
SBG-03	3 lb.	7"(w) x 7" (L)	2
SBF-07	7 lb.	6"(w) x 14" (L)	2
SBP-12	12 lb.	7"(w) x 24" (L)	2
SBG-13	13 lb.	11.5"(w) x 11.5" (L)	1

All Sandbags include free weight ID tag



**Sandbag Colors**

Green	Blue	Black	Red	Yellow
Default Color				

CUSTOM SIZES AVAILABLE!

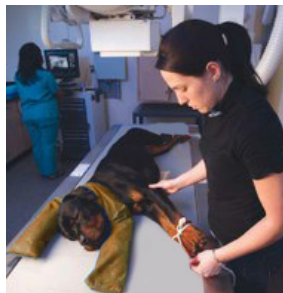
## Sandsocks

Sandsocks are loosely filled sandbags that contour to a broad range of shapes and forms. Stabilizes hard-to-hold and irregular anatomy. No need for additional person to hold the patient. Double seams for strength and longevity. Flexible, heavy gauge, reinforced vinyl. Only available in "honey" color.

CAT.#	Weight (lbs.)	Dimensions	Price
SBS-01	1 lb.	2"(w) x 8" (L)	\$32.00
SBS-03	3 lb.	4"(w) x 12" (L)	\$33.00
SBS-04	3.5 lb.	8"(w) x 10" (L)	\$35.00
SBS-05	5 lb.	5"(w) x 15" (L)	\$40.00
SBS-07	7 lb.	6"(w) x 18" (L)	\$42.00
SBS-08	8 lb.	7"(w) x 22" (L)	\$42.00
SBS-10	10 lb.	6"(w) x 20" (L)	\$43.00
SBS-12	12 lb.	6"(w) x 25" (L)	\$44.00
SBS-28	28 lb.	6"(w) x 28" (L)	\$44.00
SBS-40	15 lb.	6"(w) x 40" (L)	\$54.00



All Sandbags include free weight ID tag



Sandsocks stabilize hard-to-hold and irregular anatomy!

## Sandsock Kit

Sandsocks are loosely filled sandbags that contour to a broad range of shapes and forms. Stabilizes hard-to-hold and irregular anatomy. No need for additional person to hold the patient. Double seams for strength and longevity. Flexible, heavy gauge, reinforced vinyl. Only available in "honey" color.



#SBK-SA | \$182.00

Included Sandsocks			
CAT.#	Weight (lbs.)	Dimensions	Quantity
SBS-01	1 lb.	2"(w) x 8" (L)	1
SBS-03	3 lb.	4"(w) x 12" (L)	1
SBS-05	5 lb.	5"(w) x 15" (L)	1
SBS-10	10 lb.	6"(w) x 20" (L)	1
SBS-12	12 lb.	6"(w) x 25" (L)	1

#SBK-DRE | \$460.00

Included Sandsocks			
CAT.#	Weight (lbs.)	Dimensions	Quantity
SBS-01	1 lb.	2"(w) x 8" (L)	2
SBS-03	3 lb.	4"(w) x 12" (L)	2
SBS-05	5 lb.	5"(w) x 15" (L)	4
SBS-28	10 lb.	6"(w) x 28" (L)	2
SBS-40	12 lb.	6"(w) x 40" (L)	2

## Aquasonic Clear®

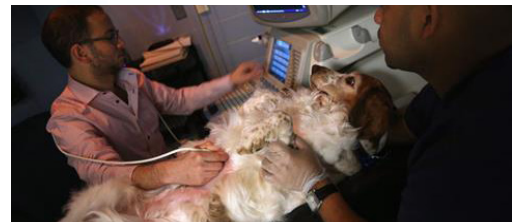
Same as Aquasonic® 100, but with no fragrance or color

Aquasonic 100 ultrasound transmission gel now has partner in Aquasonic Clear. From Parker Laboratories, the world leader in ultrasound products. Aquasonic Clear is made from the purest water with absolutely no perfumes or dyes. As with Aquasonic 100, Aquasonic Clear is hypoallergenic and will consistently provide superior ultrasound transmission. Choose Aquasonic Clear—the benefits are visible!

CAT#	Size Per Unit	Units Per Box	Price Per Box
USC-025	250ml bottle	12	\$59.00
USC-100	1 liter bottle	6	\$215.00
USC-500	5 liter jug with 1 bottle	1	\$45.00

### FEATURES:

- No Fragrance or color
- Water Soluble
- Hypoallergenic
- Bacteriostatic
- Non-irritating
- No Formaldehyde
- Not a spermicide
- Acoustically correct



## Aquasonic® 100

Industry standard ultrasound transmission gel

Recommended for all procedures where a viscous gel is required. Acoustically correct for the broad range of frequencies used. Aqueous formula will not stain clothing or damage transducers. Hypoallergenic, bacteriostatic, non-sensitizing, non-irritating.

CAT#	Size Per Unit	Units Per Box	Price Per Box
USO-025	250ml bottle	12	\$59.00
USO-100	1 liter bottle	6	\$114.00
USO-500	5 liter jug with 1 bottle	1	\$44.00
USO-048	20g sterile pouch	48	\$140.00
USO-030	Non sterile pouch	100	\$57.00



## Sterile Aquasonic 100® Ultrasound Transmission Gel

The World Standard for sterile ultrasound gel, STERILE AQUASONIC 100 is recommended for diagnostic and therapeutic ultrasound applications when sterility is indicated.

#USO-048 | \$140.00

20 g overwrapped foil pouches,  
48 sterile pouches per box



### FEATURES:

- Overwrapped, sterilized foil pouch
- Acoustically correct for ultrasound
- Non-irritating, hypoallergenic
- Completely aqueous, will not stain clothing, damage equipment or irritate
- Non-injurious to transducers

## SCAN Dual-Viscosity Ultrasound Transmission Gel

Dual-viscosity formula allows SCAN to be applied as a gel and scan as a fluid. For ultrasound procedures when a less viscous gel is desired! Available in three sizes.

CAT#	Description	Price
USS-024	237ml Bottle / 12 per box	\$60.00
USS-380	1 Gallon Bottle / 1 per box	\$40.00
USS-438	Scan Gallons /	\$150.00

AVAILABLE  
IN THREE  
SIZES!



### FEATURES:

- Acoustically correct for ultrasound
- Completely aqueous, will not stain clothing, damage equipment or irritate
- Recommended by manufacturers of ultrasound equipment worldwide
- No formaldehyde

## Ultrasound Gel Warmers

“Uni-Sleeve” heating element adjusts up to 122°F. Illuminated On/Off switch with hospital grade cord. Stainless Steel with white powder coat finish. Fits standard 250ml gel bottles.

### Steel Gel Warmers

CAT#	Rating	Capacity	Price Per Box
UGW-U01	UL/CSA approved	1	\$236.00
UGW-U02	UL/CSA approved	2	\$296.00



## Empty Dispenser Bottles

Standard 250ml bottles can be used for ready refills or as a back-up supply when filled from a larger container. Comes with a black tip cap and can be used in ultrasound gel warmers.

#USB-012 | \$54.00

Sold as 12 bottles



# Techno-Aide Best Fit Sizing Guide

**Techno-Aide Sizing Charts are based on universal body sizes.** But let's face it... nobody is average! A great apron won't fit like a pair of jeans or a suit. **Aprons are meant to fit multiple body types and sizes!** So, in order to get the "Best Fit for You," please consider the following when measuring yourself for a standard garment:

**PROTECTION IS PRIMARY:** Why are you wearing an apron? Protection from radiation! At Techno-Aide, we understand that comfort is important, but never as important as protection. Our aprons are designed to keep the user safe above all else. But who says you can't add a little style and comfort along the way?

**CIRCUMFERENCE CONSIDERATIONS:** When measuring for a Front Protection Apron, measure from one side of the widest part of your body, around to the other side - the actual distance you want protected. Then, tell us if that measurement is your chest, tummy, or hips.

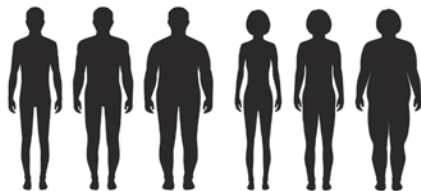
**HEIGHT CONSIDERATIONS:** In relation to your circumference, do you have a long or short torso? We want to make sure that you are adequately protected!

Front Protection Apron			
Size	Front Width	Length	Circumference
Petite	20"	32"	< 36"
Small	21"	34"	< 40"
Medium	22"	36"	< 44"
Large	24"	38"	< 48"
X-Large	26"	40"	< 52"
2X	28"	40"	< 56"
3X*	30"	40"	< 60"

Vest (Male) & Full Wrap-Around			
Size	Chest/Tummy	Vest Length	Full Wrap Length
Petite	35"-36"	19.5"	32"
Small	37"-38"	20"	34"
Medium	39"-41"	21"	36"
Large	42"-44"	22"	38"
X-Large	45"-49"	23"	40"
2X	50"-54"	24"	40"
3X*	55"-59"	24"	40"

Vest (Female)				
Size	Bust	Waist	Hip	Length
Petite	33"-34"	< 31"	35"-36"	19"
Small	35"-36"	< 33"	37"-38"	19.5"
Medium	37"-38"	< 35"	39"-40"	20"
Large	39"-41"	< 39"	41"-43"	21"
X-Large	42"-44"	< 41"	44"-46"	22"
2X	45"-49"	< 46"	47"-51"	23"
3X*	50"-54"	< 51"	52"-56"	23"

Skirt and Kilt			
Size	Waist	Hip	Length
Petite	25"-27"	32"-34"	19"
Small	28"-29"	35"-36"	19"
Medium	30"-33"	37"-40"	20"
Large	34"-37"	41"-44"	21"
X-Large	38"-41"	45"-48"	22"
2X	42"-45"	49"-52"	22"
3X	46"-50"	53"-57"	22"



**Notes About Measuring!**

Sizes shown for apparel (other than front protection) are **ACTUAL** body measurements.

All lengths are from the **sternal notch or waist** downward, depending on the garment.

**One Size to Fit Them All!**

**Don't get hung up with complicated customization!**

Standard sizes are designed to fit nearly every body type. **As shown to the right**, our standard Large Flex-Guard can be worn properly by three people with completely different body types!

Use our expert guides to find the perfect size today!



\*Each person is wearing a standard (non-custom) large Flex-Guard apron appropriately. Photos provided to show standard sizing fit. Apron shown in default 61-Sapphire material.

## EZ-Guard (Hook & Loop)

EZ-On / EZ-Off. Our Most Popular Front Protection apron with an easy criss-cross back and **Hook and Loop** closure on the front. Perfect for every day imaging protection. Double-fold binding for strength and tear resistance. Concealed shoulder pads for extra comfort. Free dual pocket to store an attached thyroid collar and a separate pocket for other items.

### 0.5mm Pb Equivalent Protection

CAT. #	Lead Type	Petite/ Sm/ Med	LG / XL	2X / 3X
EVR	Regular	\$229.00	\$250.00	\$289.00
EVL	Light Wt.	\$289.00	\$314.00	\$368.00
EVG	<b>Lead-Free</b>	\$374.00	\$435.00	\$474.00

### 0.375mm Pb Equivalent Protection

CAT. #	Lead Type	Petite/ Sm/ Med	LG / XL	2X / 3X
EVSR	Regular	\$203.00	\$219.00	\$251.00
EVSL	Light Wt.	\$225.00	\$279.00	\$325.00
EVSG	<b>Lead-Free</b>	\$310.00	\$384.00	\$453.00

**Our Most Popular Apron!**



See our "Best-Fit" sizing guide on PG 12



## EZ-Guard (Buckle)

EZ-On / EZ-Off. Our Most Popular Front Protection apron with an easy criss-cross back and **Buckle** closure on the front. Perfect for those who prefer a quick adjustable closure. Double-fold binding for strength and tear resistance. Concealed shoulder pads for extra comfort. Free dual pocket to store an attached thyroid collar and a separate pocket for other items.

### 0.5mm Pb Equivalent Protection

CAT. #	Lead Type	Petite/ Sm/ Med	LG / XL	2X / 3X
EBR	Regular	\$229.00	\$250.00	\$289.00
EBL	Light Wt.	\$289.00	\$314.00	\$368.00
EBG	<b>Lead-Free</b>	\$374.00	\$399.00	\$474.00

### 0.375mm Pb Equivalent Protection

CAT. #	Lead Type	Petite/ Sm/ Med	LG / XL	2X / 3X
EBSR	Regular	\$203.00	\$219.00	\$251.00
EBSL	Light Wt.	\$225.00	\$279.00	\$325.00
EBSG	<b>Lead-Free</b>	\$310.00	\$384.00	\$453.00

## Flex-Guard (Hook & Loop)

Front Protection apron with flexible stretch criss-cross back and **Hook and Loop** closure on the front. Excellent fit for full day imaging protection by providing less weight on the shoulders and snug fit at the back. Double-fold binding for strength and tear resistance. Free dual pocket to store an attached thyroid collar and a separate pocket for other items. Concealed shoulder pads for extra comfort.

### 0.5mm Pb Equivalent Protection

CAT. #	Lead Type	Petite/ Sm/ Med	LG / XL	2X / 3X
FVR	Regular	\$238.00	\$280.00	\$319.00
FVL	Light Wt.	\$300.00	\$344.00	\$383.00
FVG	<b>Lead-Free</b>	\$395.00	\$438.00	\$503.00

### 0.375mm Pb Equivalent Protection

CAT. #	Lead Type	Petite/ Sm/ Med	LG / XL	2X / 3X
FVSR	Regular	\$211.00	\$249.00	\$281.00
FVSL	Light Wt.	\$260.00	\$309.00	\$355.00
FVSG	<b>Lead-Free</b>	\$333.00	\$376.00	\$416.00



See our "Best-Fit" sizing guide on PG 12



## Flex-Guard (Buckle)

Front Protection apron with flexible stretch criss-cross back and **Buckle** closure on the front. Excellent fit for full day imaging protection by providing less weight on the shoulders and snug fit at the back. Double-fold binding for strength and tear resistance. Free dual pocket to store an attached thyroid collar and a separate pocket for other items. Concealed shoulder pads for extra comfort.

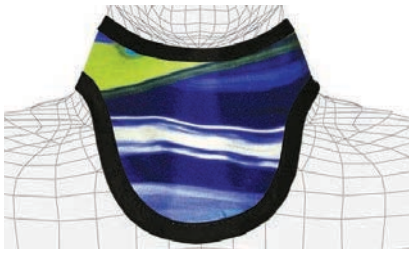
### 0.5mm Pb Equivalent Protection

CAT. #	Lead Type	Petite/ Sm/ Med	LG / XL	2X / 3X
FBR	Regular	\$238.00	\$280.00	\$319.00
FBL	Light Wt.	\$300.00	\$344.00	\$383.00
FBG	<b>Lead-Free</b>	\$395.00	\$438.00	\$503.00

### 0.375mm Pb Equivalent Protection

CAT. #	Lead Type	Petite/ Sm/ Med	LG / XL	2X / 3X
FBSR	Regular	\$211.00	\$249.00	\$281.00
FBSL	Light Wt.	\$268.00	\$309.00	\$355.00
FBSG	<b>Lead-Free</b>	\$333.00	\$376.00	\$416.00

## Thyro-Guards



### Standard

Binding all around means affordable comfort and flexibility.



### No Binding

No binding means extra comfort, flexibility and lighter weight.



### Mid-Binding

No binding at the top means extra comfort under the chin.

#### 0.5mm Pb Equivalent Protection

CAT. #	Lead Type	Price
TYR	Regular	\$44.00
TYL	Light Wt.	\$54.00
TYG	Lead-Free	\$64.00

CAT. #	Lead Type	Price
TNR	Regular	\$74.00
TNL	Light Wt.	\$84.00
TNG	Lead-Free	\$94.00

CAT. #	Lead Type	Price
TVR	Regular	\$59.00
TVL	Light Wt.	\$69.00
TVG	Lead-Free	\$79.00

#### 0.375mm Pb Equivalent Protection

CAT. #	Lead Type	Price
TYSR	Regular	\$34.00
TYSL	Light Wt.	\$39.00
TYSG	Lead-Free	\$48.00

CAT. #	Lead Type	Price
TNSR	Regular	\$53.00
TNSL	Light Wt.	\$57.00
TNSG	Lead-Free	\$66.00

CAT. #	Lead Type	Price
TVSR	Regular	\$44.00
TVSL	Light Wt.	\$49.00
TVSG	Lead-Free	\$58.00

### Attached Standard

### Attached No Binding

### Attached Mid-Binding

#### 0.5mm Pb Equivalent Protection

CAT. #	Lead Type	Price
TAR	Regular	\$54.00
TAL	Light Wt.	\$64.00
TAG	Lead-Free	\$74.00

CAT. #	Lead Type	Price
TCR	Regular	\$84.00
TCL	Light Wt.	\$94.00
TCG	Lead-Free	\$104.00

CAT. #	Lead Type	Price
TWR	Regular	\$69.00
TWL	Light Wt.	\$79.00
TWG	Lead-Free	\$89.00

#### 0.375mm Pb Equivalent Protection

CAT. #	Lead Type	Price
TASR	Regular	\$46.00
TASL	Light Wt.	\$51.00
TASG	Lead-Free	\$59.00

CAT. #	Lead Type	Price
TCSR	Regular	\$63.00
TCSL	Light Wt.	\$67.00
TCSG	Lead-Free	\$76.00

CAT. #	Lead Type	Price
TWSR	Regular	\$54.00
TWSL	Light Wt.	\$59.00
TWSG	Lead-Free	\$68.00

### Attached Thyroid Collars Info

#### All Attached Thyroid Collars include:

- 1) A snap ring for easy collar attachment.
- 2) Attach anytime with tethered strap.
- 3) Unique 2-in-1 pocket design.

[store collar in one pocket and use other pocket for accessories]

Thyroid collars are 6" tall x 6.5" wide, with a 24" strap.



Attached Thyroid option and our 2-in-1 pocket design!

### Buckle Closure Add-On

If you prefer buckle closure to regular hook & loop, add "-B" to any of the collar numbers above and add \$5.00 to the price.

(Ex.: TYR-B would be \$49.00)



Buckle closure add-on available!



## Economy Protective Bundle Kit

Perfect Economy Bundle Kit for transporting your protective gear from one facility to another. Features 0.5mm Pb protection for the apron and matching thyroid shield.

CAT#	Media type	Price
BNDL-AE14R	Regular Lead	\$514.00

### BUNDLE INCLUDES

- **EGRL** Econo Guard Apron Regular Lead
- **TYR** Standard Thyroid shield attached
- **LER-6SPL** Sure Guard Plano glasses
- **ACB-28** Carrying Bag



## Apron Tote Bag Only

Convenient tote for all your protective wear. Durable rip-stop nylon fabric with zippered closure. 28" long to minimize folding your aprons. EZ-Carry handle and shoulder strap included. Default color for the Guard Tote is Anti-Microbial 64-Black Onyx Diamond Ripstop but available in other colors at no additional charge.

#ACB-28 | \$110.00



## Veterinary Bundle Kit

Veterinary equipment and radiology accessories for your facility. Includes one of the following items listed below. New Default sapphire blue (#61) Anti-Microbial protective fabric. Three media types available to choose from. Shop all color options on PGs 22-23

### BUNDLE INCLUDES

- **EVL-L** EZ Guard Apron Size Large
- **TAL** Thyroid Shield attached (not shown)
- **LER-PBPL** Power Guard protective glasses
- **MGP** Pair of Palm Guard Protective Mittens (Choose color)
- **AGR-115** Apron & Glove Rack
- **ACB-28** Matching Carrying Bag

### MEDIA TYPES

CAT#	Lead Type	Price
BNDL-VF14R	Regular	\$1020.00
BNDL-VF14L	Light Wt.	\$1092.00
BNDL-VF14G	<b>Lead-Free</b>	\$1159.00



# Omni-Guard

## Protective Flexible Shield

Used over a patient or equipment, protects from radiation exposure. Used underneath a patient, prevents scatter radiation. All purpose covering for patients or equipment. 0.5mm Pb equivalency protection. Choose any color fabric.

Size	Width x Length
S	18" x 18"
M	24" x 24"
L	24" x 36"
X	24" x 48"



### 0.5mm Pb Equivalency

CAT. #	Lead Type	Small	Medium	Large	X-Large
OMR	Regular	\$124.00	\$144.00	\$184.00	\$214.00
OML	Light Wt.	\$154.00	\$203.00	\$284.00	\$351.00
OMG	<b>Lead-Free</b>	\$214.00	\$264.00	\$324.00	\$468.00

### 0.375mm Pb Equivalency

CAT. #	Lead Type	Small	Medium	Large	X-Large
OMSR	Regular	\$94.00	\$124.00	\$154.00	\$184.00
OMSL	Light Wt.	\$144.00	\$184.00	\$224.00	\$274.00
OMSG	<b>Lead-Free</b>	\$204.00	\$254.00	\$334.00	\$474.00

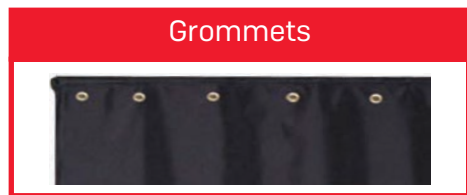
## NEW Add-On Conversions

### For All Omni-Guards

Make your Omni-Guard more versatile! Want to hang your omni-guard like a curtain or drape? Convert any omni-guard by adding grommets or loops!\*

CAT. #	Type	QTY	Price
OM-GR	Grommets	Up to 5	\$25.00
OM-LP	Loops (Tabs)	Up to 5	\$25.00

Shop color and embroidery options on pages 21-23!



## Custom Omni-Guards

Don't see the size you need? We are happy to provide a quote based on your needs! Simply fill out the information below and submit for a quote today!

Choose your favorite fabric colors on PGS 22-23

Customer Information	
Name	
Phone Number	
Contact Email	
Address Line 1	
Address Line 2	

Omni-Guard Quote Information	
Length (in.)	
Width (in.)	
Grommets (Y/N)	
Tabs (Y/N)	
Drape Color (PG. 22-23)	

\*Desired location and distance between grommets (maximum width of 48") must be noted on any Omni-Guard add-on order.

## Hand Guard Mittens

The Veterinary Market may receive some of the highest doses of radiation to the hand because of the frequent holding of pets during imaging. Chronic irradiation of the hands is a principle concern. Shield hands from the harmful effects of exposure by using a full 360 degree protection as shown below. Sold as a pair (two mittens).

**NIOSH:** The National Institute for Occupational Safety and Health guidelines state that No Part of the body should be directly exposed to radiation. If there is a danger of exposing a body part, that **Appropriate Protection** must be used.

**CAT# HSRP** | \$125.00

Sold as a pair (R&L)



The ultimate hand protection without losing dexterity during exams!



## Lead Blockers

Lead Blockers maximize efficiency and optimize use of imaging. Divides receptor for multiple exposures. Covered with blue vinyl laminate. 1mm lead Pb. equiv.

CAT#	Blocker Size	Fits Receptor Size	Price
FLB-58	5" x 8"	8" x 10"	\$37.00
FLB-52	5" x 12"	10" x 12"	\$48.00
FLB-61	6" x 10"	10" x 12"	\$48.00
FLB-71	7" x 11"	11" x 14"	\$64.00
FLB-77	7" x 17"	14" x 17"	\$90.00
FLS-78	SET OF ALL 5		\$258.00



## Palm Guard Radiation Protective Mittens

Flexible for grasping and holding animals during imaging. Colorful fabric on one side and soft touch neutral on the palm side. 0.5mm Pb equivalency. **Sold as a pair (R&L).**

Choose your favorite fabric colors on PGS 22-23

CAT#	Lead Type	Price
MGRP	Regular	\$214.00
MGLP	Light Wt.	\$224.00
MGGP	<b>Lead-Free</b>	\$234.00



## Palm Guard Mittens & Gloves

The Veterinary Market may receive some of the highest doses of radiation to the hand because of the frequent holding of pets during imaging. Chronic irradiation of the hands is a principle concern. Shield hands from the harmful effects of exposure by using a full 360 degree protection as shown below. Sold as a pair.

**NIOSH:** The National Institute for Occupational Safety and Health guidelines state that No Part of the body should be directly exposed to radiation. If there is a danger of exposing a body part, that **Appropriate Protection** must be used.



## Palm Guard Radiation Protective Gloves

Full palm protection with thumb extension for grip. Seamless Lead Vinyl Radiation Protection Gloves provide hand protection with option of exposing fingers for dexterity. Durable lead vinyl dipped gloves have a soft and supple navy vinyl covering (15") with 0.5mm Pb equivalency. Dip-molded core. Available with and without palm slit. Sold as a pair.

### Palm-Guard Slitted Mittens

CAT#	Quantity	Price
PSP	Pair (L & R)	\$531.00



### Palm-Guard Mittens (no slit)

CAT#	Quantity	Price
PGP	Pair (L & R)	\$445.00



Full palm protection!  
Available with or  
without palm slit for  
added dexterity!

## Hand Guard: 5-Finger Gloves

Seamless Lead Vinyl Radiation Protection Gloves. Five fingered protection for full dexterity. Durable lead vinyl dipped gloves have a soft and supple navy vinyl covering (15") with 0.5mm Pb equivalency. Dip-molded core. Sold as a pair.

### Hand-Guard/ 5 Finger

CAT#	Quantity	Price
HGP	Pair (L & R)	\$376.00



Five fingered  
protection for full  
dexterity during  
procedures!

# Custom Apparel Quote Form

Please fill out the following form and submit for a pricing quote on all custom apparel. All custom sized apparel will include an additional fee for each item ordered. Custom sized apparel is non-refundable, non-returnable.

## Custom Sized Apparel

Please use the provided CAT numbers and pricing for each custom apparel item.

**ACP** - **\$125** fee for custom Aprons, Vests & Skirts

**ACP2** - **\$45** fee for other custom apparel items (ex: thyroid guards, gonadal guards)

\*3X is the maximum size for standard (listed) pricing. All sizes exceeding 3X will be considered custom products. Additional fees apply.

APRON CAT.# \_\_\_\_\_ DESCRIPTION \_\_\_\_\_ LEAD TYPE \_\_\_\_\_

FABRIC (pg 22-23) \_\_\_\_\_ BINDING COLOR (pg 21) \_\_\_\_\_

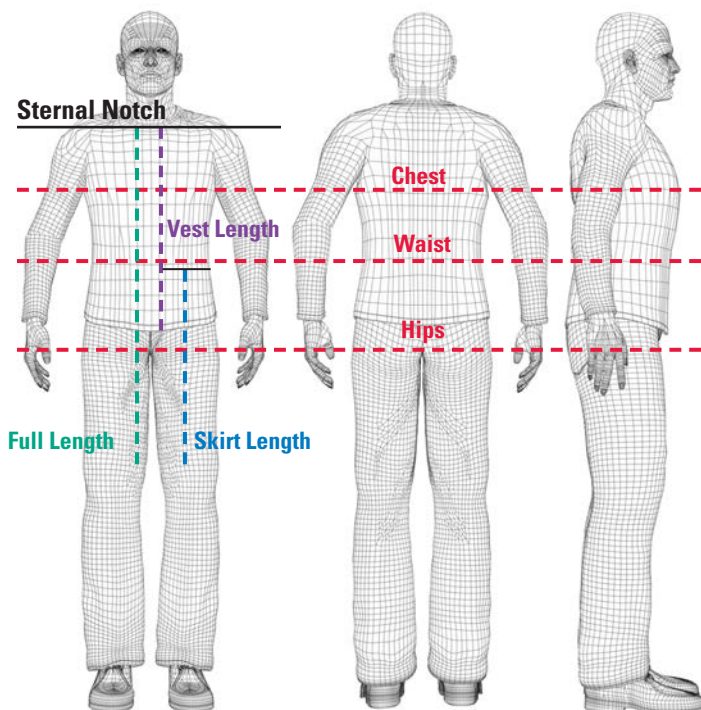
EMBROIDERY (OPTIONAL) LINE 1, UP TO 24-LETTERS (FREE) \_\_\_\_\_

EMBROIDERY LINE 2, UP TO 24-LETTERS (\$20.00) \_\_\_\_\_

EMBROIDERY THREAD COLOR (pg 21) \_\_\_\_\_ LETTER STYLE (pg 21) \_\_\_\_\_

ADD ATTACHED THYROID COLLAR? YES NO CAT.# \_\_\_\_\_ (COLOR WILL MATCH APRON)

### Getting Accurate Measurements (all in inches)



**GENDER:** \_\_\_\_\_

**HEIGHT:** \_\_\_\_\_

**BUST/CHEST:** \_\_\_\_\_  
Circumference around the widest part of your chest.

**SIDE-to-SIDE:** \_\_\_\_\_  
The widest part of your body that you want covered by a Front Protection Apron. Please specify the this area (circle): chest / tummy / hips

**WAIST:** \_\_\_\_\_  
Standard Apron: measure your waistline.  
Skirt/Kilt: measure where you want the skirt/kilt top (may be higher than your regular waistline).

**HIP:** \_\_\_\_\_  
Circumference around the widest part of your hips.

**LENGTH:**  
FRONT APRON or WRAP-AROUND: \_\_\_\_\_  
Sternal notch to just above the knee.

**VEST/TORSO:** \_\_\_\_\_  
Sternal Notch to desired length below your waist.

**SKIRT/KILT:** \_\_\_\_\_  
Desired skirt/kilt top (may be above your regular waistline) to just above your knee.

Please submit this information with your order.

## Protective Apparel Add-Ons

### FREE Embroidery Sewn-In

Select products come with the first line (up to 24 characters) of embroidery **FREE!** Add flexibility with an embroidered patch. Choose from a style below. Add flexibility with an embroidery patch! *Embroidered items are non-returnable & non-refundable.*

Available Styles

**JOHN SMITH, MD**

John Smith, MD

*John Smith, MD*

**All Caps** (default)

**Block**

**Script**

**#EML2 | \$20 for second embroidery line, up to 24 letters.**

### Embroidery Add-On Patch

This flexible option has your information embroidered onto a patch. Hook & Loop on the back of the patch and on the garment secure the patch in place.

**#EMP (Patch) | \$25.00**



(Patch above pocket)



(Hook and loop closure)

### Embroidery Colors

- White* (default)
- Black* (default)
- Lt. Gray*
- Charcoal*
- Royal Blue*
- Red*
- Yellow*
- Orange*
- Tan*
- Brown*


### Binding Colors

- Black** (default)
- Light Gray** (default)
- Navy**
- Royal Blue**
- Red**
- Yellow**
- Orange**
- Tan**
- Pink**
- Purple**
- Green**
- Burgundy**

### FREE Shoulder Strap

Simply ask for it with your order. Hook & loop Strap is attached to one shoulder and reaches across to the other.

**#EMS | FREE**



Helps keep shoulders high and comfortable.

## Protective Media Guide

MEDIA	BENEFITS	PROTECTION	ATTENUATION	WEIGHT
Regular Lead	Most economical and recyclable	100% Lead	0.5mm Pb Equiv. Protection avg. 97% attenuation over 80, 100, 120 KVP	9 - lbs. <small>(based on medium front protection apron)</small>
Lightweight Lead	Lighter than regular lead and recyclable	Lead-Tin	0.5mm Pb Equiv. Protection avg. 96.8% attenuation over 80, 100, 120 KVP	8 - lbs. <small>(based on medium front protection apron)</small>
Lead Free	Lightest Weight, Lead-Free, Environmentally Friendly	Tungsten-Antimony	0.5mm Pb Equiv. Protection avg. 96.6% attenuation over 80, 100, 120 KVP	7 - lbs. <small>(based on medium front protection apron)</small>

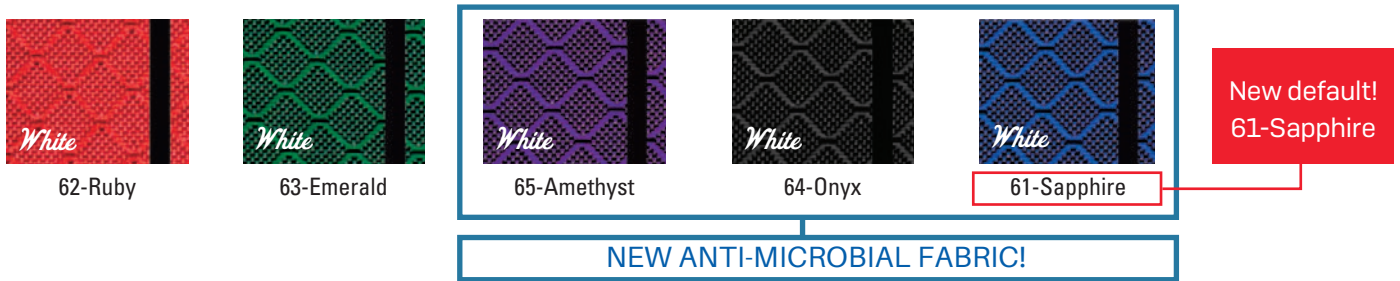
# Protective Apparel Fabric Options

## NYLON FABRICS

### FEATHER RIPSTOP FABRIC Light Weight Nylon, Filament Reinforced Fabric



### DIAMOND RIPSTOP FABRIC Medium Weight Nylon, Filament Reinforced Fabric

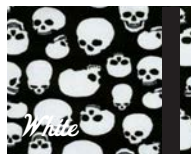


### NYLON SOLIDS Liquid Repellent, Light & Supple



SPECIALTY FABRICS

COLORFUL PRINTS *Liquid Repellent, Medium Weight*



**NEW** 69-Skulls



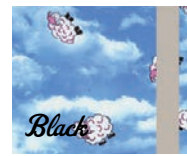
70-Blue Plaid



71-Leopard



72-Lots•0•Dots



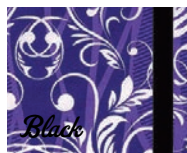
73-Sleepy Sheep



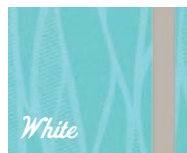
74-Playful Pups



83-Cool Waves



77-Life Vines



78-Waterfall



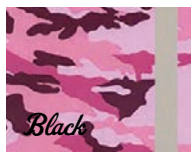
80-Red Paws



81-Black Paws



76-Blue Paws



82-Pink Camo

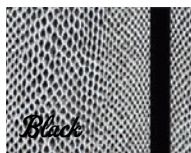


85-Digital Camo



86-Camo Night

TEXTURED FABRIC *Textured High Tech Fabrics*



15-Diamondback



16-Crocogator



18-Bronze Tech



New Premium Fabric Add-On

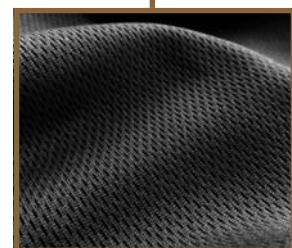
**NEW** Coolwear Fabric

**Designed for optimum cooling comfort!**

Our new Coolwear fabric add-on provides premium cooling comfort all day long! **This premium fabric can now be added to ANY garment!** The polyester mesh lining features air vented space and stretch-in-width for extreme comfort and fit. This innovative add-on is designed for ultimate performance and comfort.

- CP50** - \$50 add-on for aprons, vests, skirts, kilts, dental drapes, omni-blankets, & kiddie covers
- CP40** - \$40 add-on for half aprons and scolio-guards
- CP25** - \$25 add-on for thyroid collars, hats, & gonadal shields

Features premium comfort with all day cooling!





## Radiation Protective Glasses

The eyes are one of the most sensitive areas of the body, and are one of the most vulnerable to radiation. Safeguard them from damage by using high-quality lead glasses for each & every x-ray procedure. We remind medical facilities to take the necessary steps to protect your medical personnel and patients by implementing the use & wear of radiation glasses for your imaging facility.

It is certified that the manufacturers technical file and the PPE product detailed has been assessed and found to be in accordance with EC Directive 89/686/EEC. Certificate #GB14/92290, GB14/92291



Regulation 1910.132(a) Requires glasses to be worn near radiological hazards.

### Secure-Guard

**Vented goggle for extreme protection.**

Adjustable headband keeps goggles securely on head and prevents slippage. Neoprene foam cushioning for facial comfort. Large lens pocket allows for maximum viewing area and vented to prevent fogging. Prescription lens available.

Lead Equiv.: 0.75mm lens.  
Weight: 66 grams.  
Frame: Impact resistant plastic.

Model#	Color	Prescription Options
LES-RKPL	Black	Single Vision \$320.00 Bifocal \$340.00
LES-CTPL	\$175.00	



### Cover-Guard

**Comfortable protection over regular glasses.**

Excellent front and side visibility. Provides limited splash protection. Can be worn over prescription eyewear. Regular hinges with molded nose piece. Includes 0.75mm Pb glass side shields. Includes premium case.

Lead Equiv.: 0.75mm front and sides.  
Weight: 85 grams.  
Frame: Black rubberized nylon.

Model#	Color
LES-CKPL	Black
LES-CWPL	White
LES-CTPL	Tortoise
LES-CTPL	\$150.00



## Ultra-Guard

**Ultra-light and super stylish.**

Curved lens adds to lateral protection. Regular hinges with wrap around frame. Universal bridge support. Available in most prescriptions. Includes premium case.

Lead Equiv.: 0.75mm lens.  
 Weight: 67 grams.  
 Frame: TR-90 Nylon.

Model#	Color	Prescription Options
LER-9SPL	Silver	Single Vision \$320.00
LER-9KPL	Black	Bifocal \$340.00
LER-9TPL	Taupe	
LER-9PPL	Pink	
Plano Lens	\$195.00	



## Avant-Guard

**Two-tone colorful Ultra-Guards.**

Curved lens adds to lateral protection. Regular hinges with wrap around frame. Universal bridge support. Available in most prescriptions. Includes premium case.

Lead Equiv.: 0.75mm lens.  
 Weight: 67 grams.  
 Frame: TR-90 Nylon.

Model#	Color	Prescription Options
LER-ACPL	Carbon/Gray	Single Vision \$320.00
LER-APPL	Purple/Gray	Bifocal \$340.00
LER-AYPL	Yellow/Blue	
Plano Lens	\$195.00	



## NEW Elite Guard Wrap Around Glasses

Super Sleek curved lens provides all the great features of a High Quality Wrap Around Safety Frame. Techno-Aide Elite Guard-lightweight radiation protective glasses offer a stylish wrap-around style frame. Features rubberized soft grip temple bars for a secure fit. Rubberized soft grip nose pads. The Elite Guard fits best for Large size faces. Includes hard case, retainer cord and cleaning cloth

Lead Equiv.: 0.75mm lens.  
 Weight: 58 grams.  
 Frame: High-impact TR-90 nylon.

Model#	Color	Prescription Options
LER-EB-PL	Black	Single Vision \$320.00
LER-ES-PL	Silver	Bifocal \$340.00
Plano Lens	\$195.00	



## Turbo-Guard

**For that sharp and stream-lined look.**

Large lens area for excellent coverage. Rubberized temple bars for comfortable grip. Rubber, ultra-soft, fixed nose pad. Available in almost all prescriptions. Includes premium case.

Lead Equiv.: 0.75mm lens.  
 Weight: 65 grams.  
 Frame: Impact resistant nylon.

Model#	Color	Prescription Options
LER-TRPL	Red	Single Vision \$320.00
LER-TKPL	Black	Bifocal \$340.00
LER-TSPL	Silver	
Plano Lens	\$195.00	



## Sure-Guard

**Stylish design for medium faces.**

Large lens area for excellent coverage. Regular hinges with wrap around frame. Rubber, ultra-soft, fixed nose piece. Available in almost all prescriptions. Includes premium case.

Lead Equiv.: 0.75mm lens.  
 Weight: 63 grams.  
 Frame: TR-90 Nylon.

Model#	Color	Prescription Options
LER-6SPL	Silver	Single Vision \$335.00
LER-6KPL	Black	Bifocal \$355.00
LER-6RPL	Red	
LER-6BPL	Blue	
Plano Lens	\$215.00	



## Astro-Guard

**Side Shield protection.**

Attractive and sturdy women's frames. Flexible temples fit almost any face. Excellent visibility. Available in most prescriptions. Includes premium case.

Lead Equiv.: 0.75mm front and sides.  
 Weight: 66 grams.  
 Frame: Impact resistant plastic.

Model#	Color	Prescription Options
LES-AFYK	Black/Yellow	Single Vision \$335.00
LES-AFPW	Purple/White	Bifocal \$355.00
LES-AFGP	Gray/Pink	
LES-AFOP	Brown/Orange	
Plano Lens	\$215.00	



## Wrap-Around

**The “original” with great side protection.**

Generous lens area increases protection. Spring hinges and adjustable nose. Available in most prescriptions. Includes premium case. Prescription lens available.

Lead Equiv.: 0.75mm lens.	<b>Model#</b>	<b>Color</b>
Frame: Impact resistant plastic.	LES-53PLT	Tortoise
	Plano Lens	\$215.00



## Viva-Guard

**Lively designs for small faces.**

Smaller frame for excellent fit of smaller faces. Regular hinges with wrap around frame. Ultra soft bridge support. Available in most prescriptions. Includes premium case.

Lead Equiv.: 0.75mm lens.	<b>Model#</b>	<b>Color</b>	<b>Prescription Options</b>
Weight: 60 grams.	LER-VFPL	Fancy Flight	Single Vision \$365.00
Frame: Impact resistant polycarbonate.	LER-VVPL	Cherry Vines	
	LER-VSPL	Rad Skull	
	Plano Lens	\$235.00	



## Power-Guard

**Colortone accents increase comfort.**

Large lens area for excellent coverage. Soft colored endpiece for comfort and fit. Padded bridge, temples, and endpiece. Available in most prescriptions. Includes premium case.

Lead Equiv.: 0.75mm lens.	<b>Model#</b>	<b>Color</b>	<b>Prescription Options</b>
Weight: 64 grams.	LER-PBPL	Blue/Orange	Single Vision \$365.00
Frame: Impact resistant polycarbonate.	LER-PSPL	Silver/Pink	Bifocal \$385.00
	LER-PKPL	Black/Gray	
	Plano Lens	\$235.00	



## Wall Mounted Apron Racks

Ten or five swing-arm wall-mount apron racks. Mounting holes on 16" centers. All-steel durability with white enamel finish.



10-Arm #ARW-10 \$436.00



5-Arm, Swing Right #ARW-R5 \$260.00



5-Arm, Swing Left #ARW-L5 \$260.00

## Glove Adapter

Retrofits to Mobile Rack. Holds six (6) 18" gloves.

#ARG-06  
\$103.00



## Apron/Glove Racks

Designed for one apron, but will hold more. All steel, heavy duty construction and a white finish. 16" & 24" holes match most wall studs. Glove holders mounted onto back panel. 28.5" long x 1.75" diameter bar prevents creasing.

### WITHOUT GLOVE HOLDERS

#AGR-105  
\$187.00



### WITH TWO GLOVE HOLDERS

#AGR-110  
\$251.00



### WITH FOUR GLOVE HOLDERS

#AGR-115  
\$270.00



## Apron Peg Racks

Help extend the life of your aprons. Our apron racks are just the thing for you! 6" angled pegs keep garments from slipping. All-steel white enamel finish.

Custom sized racks may be available!

**2-Peg**  
(for 1 apron)  
**#ARP-02**  
\$72.00



**4-peg**  
(for 2 aprons)  
**#ARP-04**  
\$124.00



6-peg and 8-peg racks: mounting holes on 16" and 24" centers.

**6-peg**  
(for 3 aprons)  
**#ARP-06**  
\$145.00



**8-peg**  
(for 4 aprons)  
**#ARP-08**  
\$156.00



**16-peg**  
(for 8 aprons)  
**#ARP-16**  
\$398.00



**20-peg**  
(for 10 aprons)  
**#ARP-20**  
\$461.00



## Mobile Apron Z-Rack

Z-Base mobile rack nests with others when not in use. Heavy duty casters on 12G steel base. Chromed-steel posts and hang bar. 60" long x 60" tall bar allows hanging without creasing. Ships @ 35 lbs.

Rack ONLY  
#ARM-UZNH  
\$280.00

OR

Rack with  
Ten Hangers  
#ARM-UZ10  
\$566.00



## NEW Mobile Apron Z-Rack Middle Bar Add-On

Middle Bar addition to hang vests and skirts! 63" bar will hold up to 150 lbs. (Mobile apron z-rack sold separately)

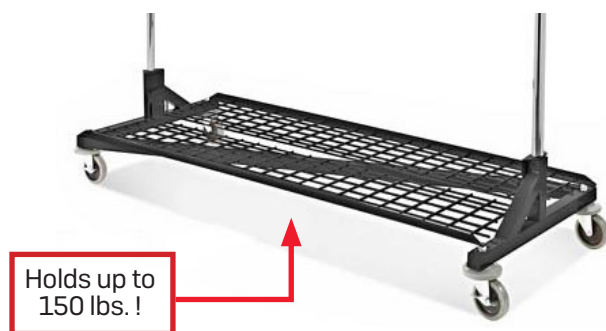
Bar Add-on  
#ARM-UBAR  
\$58.00



## NEW Mobile Apron Z-Rack Storage Base Add-On

Bottom shelf add-on for storing misc. protective accessories! 62" shelf will hold up to 150 lbs. (Mobile apron z-rack sold separately)

Shelf Add-on  
#ARM-UBASE  
\$195.00



## Apron Hangers

Designed for standard aprons, panoramic, vests, skirts, etc. Top hook swivels for easy hanging. 21" long chromed-steel with anti-slip tips. Use on ARM-UZNH rack, in lockers, or behind a door. Single ships @ 2 lbs.

Single Hanger  
#ARH-01  
\$29.00



Set of 10 Hangers  
#ARH-10  
\$286.00



## Mobile Apron Rack

Ten (10) swing-arm mobile garment stand. Durable all-steel construction. 24" x 24" H-Base for stability and easy cleaning. E-Z-Roll swivel locking casters. Convenient handle for easy mobility. White enamel finish. Overall height is 55". Some assembly required. Ships @ 110 lb.

### Standard Mobile Rack

#ARM-100  
\$1165.00



E-Z Roll, 3" medical grade, swivel, locking casters!

### Standard WITH Glove Rack

#ARM-G60  
\$1240.00



Arms swing inward to conserve space!

Easy-Clean H-Base!



(Aprons sold separately)

## 5 Arm Apron Rack

Five (5) swing-arm mobile garment stand. Durable all-steel construction with white enamel finish. 20" x 20" H-Base for stability and easy cleaning. E-Z roll swivel locking casters. Convenient handle for easy mobility. Arms extend to 29.5" outward. We offer the ability to choose whether you need right or left swing arms. Ships @ 80 lbs. motor freight.

#ARM-105  
\$880.00



You choose the right or left side!



Arms swing inward to conserve space!

E-Z Roll, 3" medical grade, swivel, locking casters!

Easy-Clean H-Base!



(Aprons sold separately)



## Standard Shield

0.5mm Pb equivalency.

Adjustable height: 36" to 60". Stable, five-legged star base. Default color: Anti-Microbial 64-Onyx Black nylon.

### 0.5mm - SHIELDING

CAT#	Media	Width x Height	Price
LPS-S2424	lead	24" x 24"	\$598.00
LPS-S2436	lead	24" x 36"	\$638.00
LPS-S2448	lead	24" x 48"	\$678.00
LPSG-S2424	lead-free	24" x 24"	\$897.00
LPSG-S2436	lead-free	24" x 36"	\$968.00
LPSG-S2448	lead-free	24" x 48"	\$1018.00



## Max-Shield

0.5mm Pb equivalency.

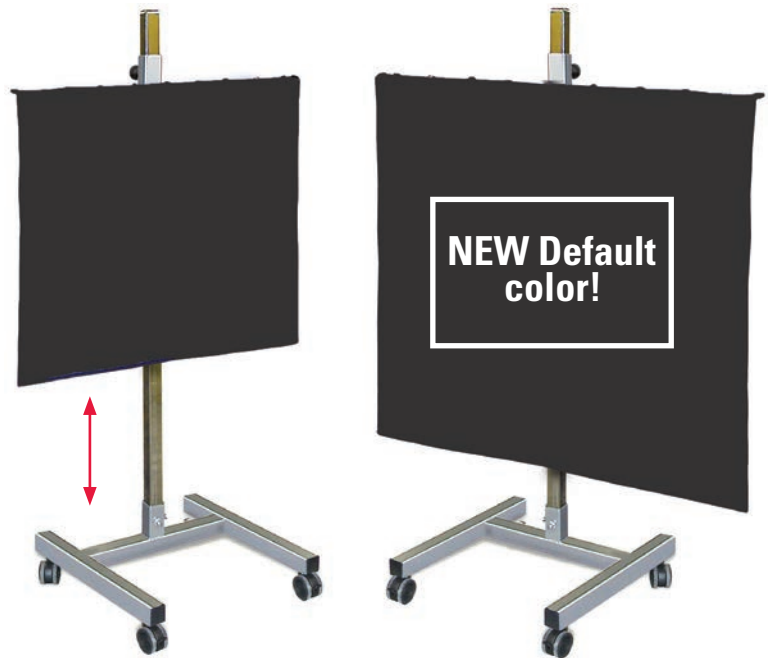
Adjustable height: 8" to 60". All steel H-base for maximum stability. Hardened chrome steel post. Posi-Lock height adjustable arm with spring-loaded pin. Default color: Anti-Microbial 64-Onyx Black nylon.

### 0.5mm - SHIELDING

CAT#	Media	Width x Height	Price
LPS-H3636	lead	36" x 36"	\$978.00
LPS-H4848	lead	48" x 48"	\$1098.00
LPSG-H3636	lead-free	36" x 36"	\$1468.00
LPSG-H4848	lead-free	48" x 48"	\$1638.00

### 1.0mm - SHIELDING

CAT#	Media	Width x Height	Price
LPS-H3636-1	lead	36" x 36"	\$1468.00
LPS-H4848-1	lead	48" x 48"	\$1886.00
LPSG-H3636-1	lead-free	36" x 36"	\$2448.00
LPSG-H4848-1	lead-free	48" x 48"	\$2888.00



Check out pages 22 & 23 to see all of our mobile shield fabric options!

## Viewing Panel Barriers

Bring radiation protection anywhere you need it with our full body x-ray mobile barriers. Transparent clear upper section for protection and clear field of view. Available in 2.0mm lead equiv. high quality Schott leaded glass. Powder coated opaque lower section is manufactured with 16 gauge solid steel & 2.0mm Pb equiv. leaded protection and contoured sides. Mobile barrier is supported by heavy grade steel legs with heavy duty medical grade locking casters (two with brakes) for easy mobility. Easy to clean. Crated for secure shipment. Shipping worldwide by ground, air, or sea freight. Manufactured by hand in the USA. Custom sizes available.

Call for pricing on all barriers.

## Opaque Mobile Barriers

### With Windows

CAT.#	Window Size	Overall Size	Weight
PBMW-2472	12"(W) x 10"(H)	24"(W) x 72"(H)	200 lbs.
PBMW-2484	12"(W) x 10"(H)	24"(W) x 84"(H)	300 lbs.
PBMW-3072	12"(W) x 10"(H)	30"(W) x 72"(H)	300 lbs.
PBMW-3084	12"(W) x 10"(H)	30"(W) x 84"(H)	300 lbs.
PBMW-3672	12"(W) x 10"(H)	36"(W) x 72"(H)	320 lbs..
PBMW-3684	12"(W) x 10"(H)	36"(W) x 84"(H)	350 lbs.
PBMW-3978	12"(W) x 10"(H)	39"(W) x 78"(H)	375 lbs.
PBMW-4084	12"(W) x 12"(H)	40"(W) x 84"(H)	375 lbs.
PBMW-4572	12"(W) x 10"(H)	45"(W) x 72"(H)	400 lbs.
PBMW-4584	12"(W) x 10"(H)	45"(W) x 84"(H)	475 lbs.
PBMW-5274	12"(W) x 10"(H)	52"(W) x 74"(H)	475 lbs.



### Without Windows

CAT.#	Window Size	Overall Size	Weight
PBMW-1472	no window	14"(W) x 72"(H)	175 lbs.
PBMW-2472NW	no window	24"(W) x 72"(H)	200 lbs.
PBMW-3072NW	no window	30"(W) x 72"(H)	200 lbs.
PBMW-3672NW	no window	36"(W) x 72"(H)	200 lbs.



Custom color options  
on PG 35!

## NEW Imaging Room Barriers

Reliable radiation protection for imaging departments. Large 10" x 12" window has protection equal to 1/16" lead / 1.5mm thick lead lining. Shield extends to the floor for maximum protection. Heavy duty construction. No assembly required. Window center 60" from shield bottom. Medical White powder coat finish. Made in the USA.

Eight sizes and three updated modern configurations to choose from: Wall mounted | stationary | mobile

Call for pricing on all barriers.

Imaging room barriers typically ship in only 7 business days!

### Wall Mounted | 10" x 12" Window

Includes mounting brackets on the side and bottom of shield.

CAT.#	Overall Size	Weight
TA-LSW2472	24" (W) x 72" (H)	135 lbs.
TA-LSW2484	24" (W) x 84" (H)	160 lbs.
TA-LSW3072	30" (W) x 72" (H)	165 lbs.
TA-LSW3084	30" (W) x 84" (H)	190 lbs.
TA-LSW3672	36" (W) x 72" (H)	185 lbs.
TA-LSW3684	36" (W) x 84" (H)	220 lbs.
TA-LSW4572	45" (W) x 72" (H)	240 lbs.
TA-LSW4584	45" (W) x 84" (H)	285 lbs.

### Floor Mounted | 10" x 12" Window

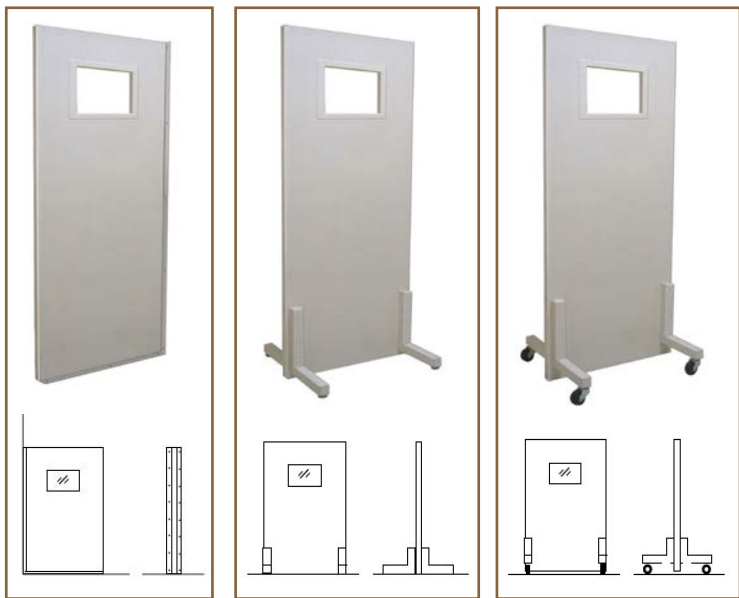
Includes mounting brackets on the bottom of the shield.

CAT.#	Overall Size	Weight
TA-LSS2472	24" (W) x 72" (H)	145 lbs.
TA-LSS2484	24" (W) x 84" (H)	170 lbs.
TA-LSS3072	30" (W) x 72" (H)	175 lbs.
TA-LSS3084	30" (W) x 84" (H)	200 lbs.
TA-LSS3672	36" (W) x 72" (H)	195 lbs.
TA-LSS3684	36" (W) x 84" (H)	230 lbs.
TA-LSS4572	45" (W) x 72" (H)	250 lbs.
TA-LSS4584	45" (W) x 84" (H)	295 lbs.

### Mobile Shields | 10" x 12" Window

Includes medical grade casters for easy mobility.

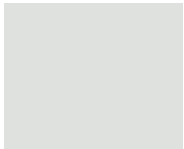
CAT.#	Overall Size	Weight
TA-LSM2472	24" (W) x 72" (H)	145 lbs.
TA-LSM2484	24" (W) x 84" (H)	170 lbs.
TA-LSM3072	30" (W) x 72" (H)	175 lbs.
TA-LSM3084	30" (W) x 84" (H)	200 lbs.
TA-LSM3672	36" (W) x 72" (H)	195 lbs.
TA-LSM3684	36" (W) x 84" (H)	230 lbs.
TA-LSM4572	45" (W) x 72" (H)	250 lbs.
TA-LSM4584	45" (W) x 84" (H)	295 lbs.



## COLORS for ALL Window & Panel Barriers

Match your facility decor or just brighten up your exam room with your choice of colorful barriers! \* All barriers are platinum unless otherwise noted. Additional color options are \$125 per barrier as shown below. Order by including the COLOR NAME and the FOUR-DIGIT Code# with your Barrier selection.

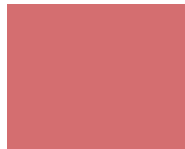
Custom colors only  
\$125 per barrier!



Platinum  
**(DEFAULT)**



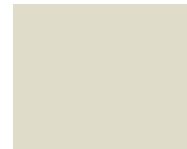
Pink  
#3015



Rose  
#3014



Rust  
#3012



Neutral  
#000N



Azure  
#5012



Dark Blue  
#5026



Sage  
#1000



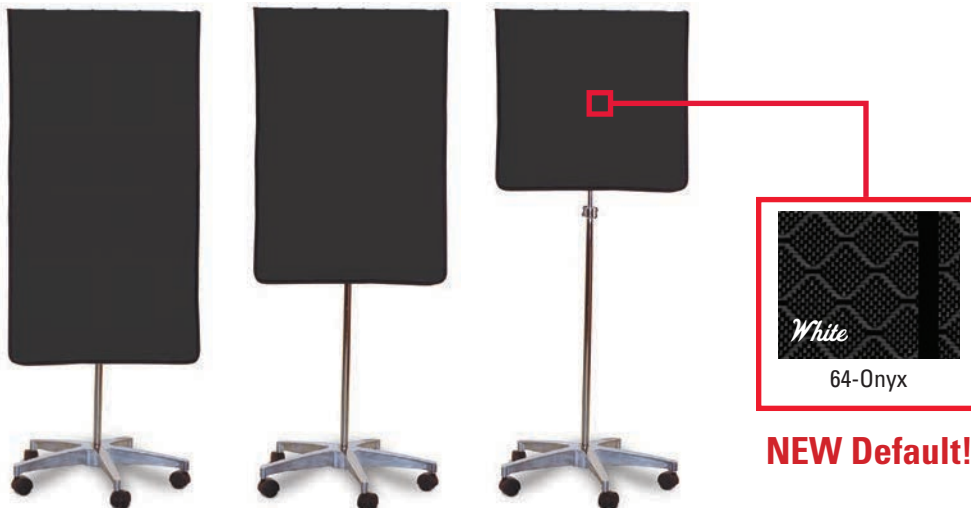
Teal  
#6000



Graphite  
#7024

### New Default Anti-Microbial Fabric for all Lead Drapes

Our new default anti-microbial fabric inhibits the growth of bacteria and other micro-organisms on the surface of your shield!



\*All shields are defaulted to platinum unless noted on order. Pictures are a representation of design and not the final product.

## X-Ray Marker Reference

“Each radiograph must include an appropriate marker that clearly identifies the patient’s right (R) or Left (L) side. Medico-legal requirements mandate that these markers be present. R and L markers must be used with CR and DR digital imaging. The development of digital imaging and the use of CR and DR have enabled an environment in which the R and L markers can be placed on the image electronically. This is not recommended because of the great potential for error and legal implications. Anatomic markers should be placed on the CR cassette or DR table similar to screen-film cassettes.”

[Merrill’s Atlas of Radiographic Positioning and Procedures, 9780323073219, text extract]

Techno-Aide is proud to offer the ultimate x-ray marker customization!  
 Mix & match from our unique styles, our premium add-ons  
 and choose from over 10,000 color combinations!  
 Don’t wait, start building your PERFECT marker set today!

## Marker Mates

A new, reusable sticky strip that adheres markers to receptors or equipment. Simply peel off the protective film and apply to the back of your markers. Each pair of Marker Mates will last approximately 30-days under normal use and care. No more need for tape when you can instantly mate your markers!

CAT. #	Quantity	Price
MM-XRAY	1 Pair	\$3.75
MM-XRAY10	10 Pair	\$35.00
MM-XRAY25	25 Pair	\$90.00
MM-XRAY100	100 Pair	\$350.00
MM-XRAY250	250 Pair	\$975.00
MM-XRAY500	500 Pair	\$1750.00



- The world’s **strongest x-ray adhesive**
- **3x Stronger** than standard marker adhesives
- Tested up to **6 months of continuous use** in clinical studies
- **Works with every type of marker!**
- Easy to wash, clean and resue
- **Reduces the spread of infections and disease**



## HOW TO BUILD YOUR PERFECT MARKERS!

### Step 1: Choose a Marker Style

#### Elite Aluminium Style

Elite markers offer a easily identifiable and durable aluminum casing.



#### Identifier Plastic Style

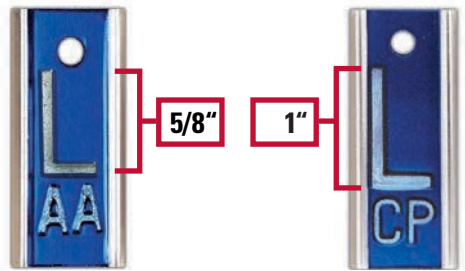
Identifier markers offer a high-impact polystyrene casing, enhancing quality control.



### Step 2: L & R Options

#### Choose a size for your L & R

Techno-Aide offers three sizes for your L & R. Choose from 0.5", 5/8" or 1" letters.



### Step 3: Mix & Match Options For the Perfect Marker

#### Choose How Many Lines

Techno-Aide offers one or two lines of characters on almost every marker. Multiple options to meet any need.

1 line letters are 3/8"  
2 line letters are 1/4"

L & R do not count as lines.



#### Choose How Many Characters

Choose from two or three initials/characters on almost any marker. Multiple options to meet any need.

L & R do not count as lines or characters.



#### Numbers, Letters or Both!

Need all numbers, all letters or a mix? No Problem! Techno-Aide offers every combination of numbers and letters.

Elite and identifier markers also available without initials!



#### Add Copper Filtration

Our copper filtered markers are specifically engineered for High KV. Crafted with high density lead letters. Add copper filtration on ANY marker today!

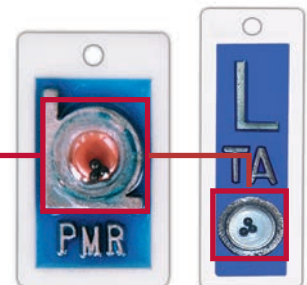
Copper prevents burnout at higher KV!



#### Position Indicators

Techno-Aide offers position indicators on our elite and identifier markers. Lead beads indicate the patients position during imaging!

Beads indicate patient position!



Go to the next page for Step 4!

## Step 4: Picking your color options!

Techno-Aide is proud to offer THOUSANDS of color combinations for you to choose from. Mix and Match your favorite colors on nearly every style marker to create your PERFECT marker set! **UNLESS NOTED, all marker sets will feature a Blue Left Marker and a Red Right Marker by default.**

### Option 1: Default colors

Don't need any color options? ALL of our markers come **DEFAULT** with a **Blue left marker** and a **Red right marker** UNLESS noted! Simply use the provided Catalog Number (CAT#) for ANY marker to order a **Blue** and **Red** set.

**EX: 1E** for a Blue & Red Elite Marker Set  
**EX: TA-1** for a Blue & Red Identifier Marker Set

**Now available in Blue and Red Glitter!**  
**Add "-G" to any default Catalog Number**

**EX: 1E-G** for a Blue & Red Glitter Elite Marker Set  
**EX: TA-1-G** for a Blue & Red Glitter Identifier Marker Set



### Option 2: Matching Sets

Want to add some fun to your markers? Simply add the color code (on pages 39 & 40) to your marker set when ordering!

**EX: 1E-SGR** for a SET (L & R) of **Solid Green** Elite Markers

**EX: TA-1-GPR** for a SET (L & R) of **Purple Glitter** Identifier Markers



### Option 3: Mix & Match Color Sets

The **ULTIMATE** customization. Mix & Match any solid, glitter or mixed color options for your Left and Right markers!

**EX: 1E/L-SPR & 1E/R-SYL** for **individual (L & R)** Elite Markers

**EX: TA-1/L-SBK & TA-1/R-SOR** for **individual (L & R)** Identifier Markers


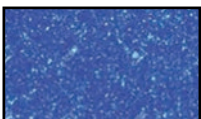
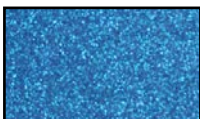
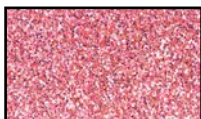



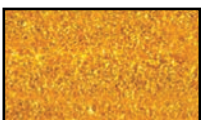
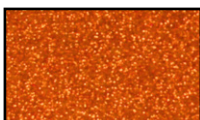

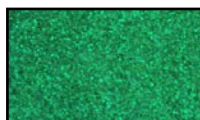
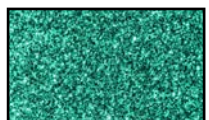
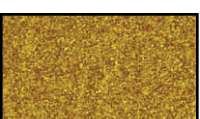





Choose your favorite colors using the provided color codes. **Blue Left and a Red Right markers by default unless noted.**  
**Please note: S** stands for solid, **G** for glitter, **M** for mixed colors and **MG** for mixed glitter.

### Solid Colors [S]

					
Red   SRD	Blue   SBL	Light Blue   SLB	Navy Blue   SNB	Dark Blue   SDB	Light Pink   SLP
					
Hot Pink   SHP	Dark Red   SDR	Burgundy   SBG	Purple   SPR	Orange   SOR	Burnt Sienna   SBS
					
Brown   SBR	Lime Green   SLG	Green   SGR	Dark Green   SDG	Turquoise   STQ	Cream   SCR
					
Yellow   SYL	Gold   SGL	White   SWH	Silver   SSL	Grey   SGY	Black   SBK

### Glitter Colors [G]

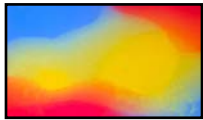
					
Red   GRD	Blue   GBL	Light Blue   GLB	Light Pink   GLP	Hot Pink   GHP	Burnt Sienna   GBS
					
Purple   GPR	Yellow   GYL	Orange   GOR	Lime Green   GLG	Green   GGR	Turquoise   GTQ
					
Gold   GGL	Brown   GBR	White   GWH	Silver   GSL		

Mix & Match  
any colors!

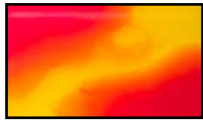


Choose your favorite colors using the provided color codes. **Blue Left and a Red Right markers by default unless noted.**  
**Please note: S** stands for solid, **G** for glitter, **M** for mixed colors and **MG** for mixed glitter.

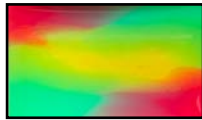
### NEW Colorsplash Mixed Markers [M]



Red | Yellow | Blue  
M01



Red | Yellow | Orange  
M02



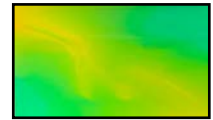
Red | Green | Yellow  
M03



Purple | Yellow  
M04



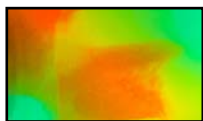
Yellow | Light Blue  
M05



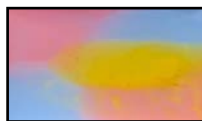
Yellow | Green  
M06



Orange | Yellow  
M07



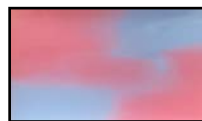
Orange | Yellow | Green  
M08



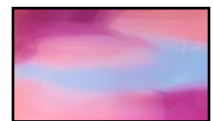
Pink | Lt Blue | Yellow  
M09



Pink | Purple  
M10



Pink | Light Blue  
M11



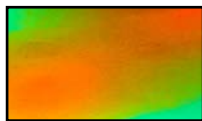
Pink | Purple | Lt Blue  
M12



Red | Green  
M13



Red | Blue  
M14



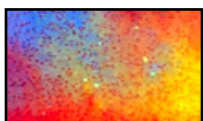
Orange | Green  
M15



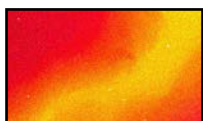
Purple | Green  
M16

Every set is unique!

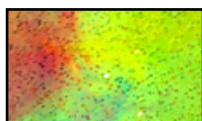
### NEW Colorsplash Mixed Glitter Markers [MG]



Red | Yellow | Blue  
MG01



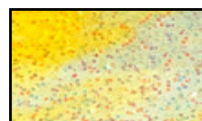
Red | Yellow | Orange  
MG02



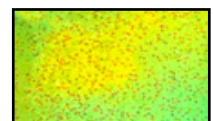
Red | Green | Yellow  
MG03



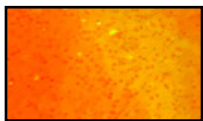
Purple | Yellow  
MG04



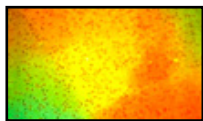
Yellow | Light Blue  
MG05



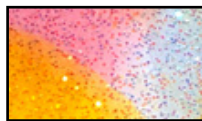
Yellow | Green  
MG06



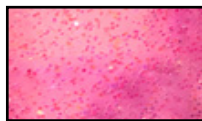
Orange | Yellow  
MG07



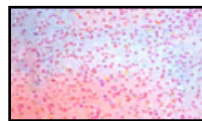
Orange | Yellow | Green  
MG08



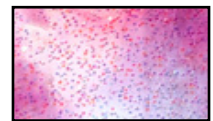
Pink | Lt Blue | Yellow  
MG09



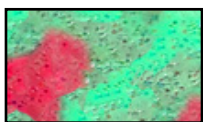
Pink | Purple  
MG10



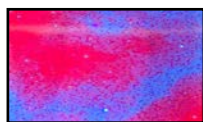
Pink | Light Blue  
MG11



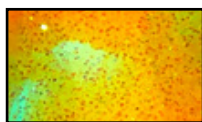
Pink | Purple | Lt Blue  
MG12



Red | Green  
MG13



Red | Blue  
MG14



Orange | Green  
MG15



Purple | Green  
MG16

Mix & Match any colors!

## Elite Markers | Aluminum

Elite markers have the most DURABLE aluminum casing. These markers provide the absolute best in QCI. Easily identifiable. **UNLESS NOTED, all marker sets will feature a Blue Left Marker and a Red Right Marker by default.**

1E | \$22.00 Per Set



R & L are 5/8"  
2 Initials are 3/8"  
3 Initials are 1/4"

**Without Initials:**  
4E | \$14.00 per set

7E | \$25.00 Per Set



R & L are 1"  
2 Initials are 3/8"  
3 Initials are 1/4"

**Without Initials:**  
5E | \$16.00 per set

8E | \$25.00 Per Set



R & L are 5/8"  
**2 Lines of Initials**  
2-3 Initials are 1/4"

Mix & Match Over  
10,000 Different Color  
Combinations!

## Identifier Markers | Plastic

Identifier markers have high-impact polystyrene casing. Enhances quality control with fewer repeat exams. Provides basic, yet personalized image identification. **UNLESS NOTED, all marker sets will feature a Blue Left Marker and a Red Right Marker by default.**

TA-1 | \$20.00 Per Set



R & L are 5/8"  
2 Initials are 3/8"  
3 Initials are 1/4"

**Without Initials:**  
TA-4 | \$13.00 per set

TA-7 | \$24.00 Per Set



R & L are 1"  
2 Initials are 3/8"  
3 Initials are 1/4"

**Without Initials:**  
TA-5 | \$14.00 per set

TA-8 | \$24.00 Per Set



R & L are 5/8"  
**2 Lines of Initials**  
2-3 Initials are 1/4"

Mix & Match Over  
10,000 Different Color  
Combinations!

## Position Indicator Markers | Beads Indicate Patient Position

Techno-Aide proudly offers position indicators on our elite and identifier markers. Lead beads indicate the patients position during imaging! Our MOST popular marker upgrade! **UNLESS NOTED, all marker sets will feature a Blue Left Marker and a Red Right Marker by default.**

### Elite Position Indicator Markers | Aluminum

TA-13 | \$32.00 Per Set

R & L are 5/8"  
2 Initials are 3/8"  
3 Initials are 1/4"

NEW TA-23 | \$35.00 Per Set

Features 2 Lines!

R & L are 5/8"  
2 Initials are 3/8"  
3 Initials are 1/4"

Mix & Match  
Over 10,000  
Different Color  
Combinations!

**Without Initials:**  
TA-14 | \$27.00 per set

### Identifier Position Indicator Markers | Plastic

TA-11 | \$32.00 Per Set

R & L are 5/8"  
2 Initials are 3/8"  
3 Initials are 1/4"

TA-17 | \$37.00 Per Set

R & L are 7/8"  
2 Initials are 3/8"  
3 Initials are 1/4"

TA-16 | \$32.00 Per Set


R & L are 7/8"  
No Initials

**Without Initials:**  
TA-12 | \$27.00 per set

Specialty Shapes and Arrow Markers

PT-FRB | \$22.00 Per Set


Tropical Fish Markers



R & L are 5/8"  
2 Initials are 3/8"  
3 Initials are 1/4"

PT-SKW | \$22.00 Per Set

Skull Markers



R & L are 5/8"  
2 Initials are 3/8"  
3 Initials are 1/4"

TA-9 | \$24.00 Per Set



R & L are 1"  
Up to 3 Initials are 3/16"

TA-LK | \$22.00 Per Set




Look Right & Look Left  
Arrow and "Look" are 1/2"

TA-2 | \$26.00 Per Set



R & L are 1/2"  
2 or 3 Initials are 1/4"

TA-002 | \$20.00 Per Set



R & L are 5/8"  
2 Initials are 3/8"  
3 Initials are 1/4"

Without Initials:  
TA-122 | \$22.00 per set

Without Initials:  
TA-001 | \$13.00 per set

TA-A3 | \$7.00 Per Marker



Arrow is 1"  
Sold as Individual Markers

Mix & Match Over 10,000  
Color Combinations!

## Copper Filtered Markers | Filtered for High KV Exams

Our copper filtered markers are specifically engineered for High KV. Crafted with high density lead letters. Available in ELITE or IDENTIFIER. Color-coded, impact resistant. **UNLESS NOTED, all marker sets will feature a Blue Left Marker and a Red Right Marker by default.**

### Elite Markers | Aluminum

COP-1 | \$47.00 Per Set

R & L are 5/8"  
 2 Initials are 3/8"  
 3 Initials are 1/4"

1 set of 1E markers **with** copper filter &  
 1 set of 1E markers **without** copper filter

COP-2 | \$45.00 Per Set

R & L are 1/2"  
 2-3 Initials are 1/4"  
 Filtered & Unfiltered on same maker

### Identifier Markers | Plastic

TA-C01 | \$43.00 Per Set

R & L are 5/8"  
 2 Initials are 3/8"  
 3 Initials are 1/4"

1 set of TA-1 markers **with** copper filter &  
 1 set of TA-1 markers **without** copper filter

COP-2 | \$45.00 Per Set

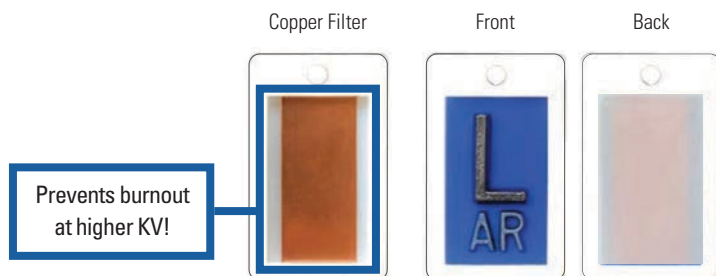
R & L are 1/2"  
 2-3 Initials are 1/4"  
 Filtered & Unfiltered on same maker

## Add Copper Filtering To Almost Any Marker!

Copper filtering add-on only \$4 per set!

**CAT# Copper | \$4.00 per set**

Copper filtering can be added to any marker type for only **\$4.00 per set!** Copper filtering is specifically engineered for High KV scans. Mix and match colors and types, then simply add copper filtering to your customization.



## Specialty Clipper Markers

### Standard Thin Clipper

Constructed of high strength Kydex™. Extra thin profile, double-sided, 1.5" wide.

CAT#	Description	Price Per Marker
CPP-40	With Initials	\$28.00
CPP-42	No Initials	\$25.00



R & L are 3/4"  
2 Initials are 3/8"  
3 Initials are 1/4"

### Elite Clippers

Both R & L are on one double clip. Durable Stainless Steel clips. **Color-coded: Right Side - Red / Left Side - Blue.**

#CP-35  
\$30.00 ea.  
(2-3 initials)



Double  
Personalized

### Portable and Position Double Clippers

#CP-13  
(with initials)  
\$37.00



#CP-36  
(with initials)  
\$37.00



#CP-14  
(no initials)  
\$30.00

#CP-37  
(no initials)  
\$30.00

### Gridcap Thin Clipper

Designed to fit DR/CR receptors with gridcap. Constructed with high strength Kydex™ material. Extra thin, double-sided, profile.

CAT#	Description	Price Per Marker
CPP-60	With Initials	\$38.00
CPP-61	No Initials	\$38.00



R & L are 3/4"  
2 Initials are 3/8"  
3 Initials are 1/4"

### Stencil Clipper

High quality plated steel construction for extreme durability. Stenciled, non-personalized right and left identifiers

#XSCP-10 | \$15.00 per clipper



## Animal Transporters

Safe and easy way to transport animals that are sick or injured.  
Flexible style rolls up for easy storage. Easy to clean and disinfect.

**RUGGED CONSTRUCTION:** Made of durable mesh laminate reinforced vinyl. Buckle closure on 2" webbing straps/ NO Hook & Loop to accumulate fur and dander! Includes six handles made of 1" webbing. 1" webbing extends underneath for added strength.

Custom sizes available!

**SMALL**  
**QATS-30**  
\$78.00



Includes 6 handles made of 1" webbing for secure transport!

**MEDIUM**  
**QATM-39**  
\$99.00



NO Hook & Loop to accumulate fur and dander!

**LARGE**  
**QATL-48**  
\$120.00



## Department Signs

All signs are constructed of durable 1/8" Trovicel™, a plastic specific to the sign industry. Double-faced tape is attached to the back for mounting. Large Signs are 8" x 10". Small Signs are 4" x 10". The large MRI "Danger" Signs are 12" x 18".

<p><b>PREGNANT</b></p> <p>IF YOU ARE PREGNANT, OR THINK YOU MAY BE, TELL THE X-RAY TECHNOLOGIST BEFORE HAVING AN X-RAY TAKEN.</p>	<p><b>PREGNANT</b></p> <p>IF YOU ARE PREGNANT, OR THINK YOU MAY BE, TELL THE X-RAY TECHNOLOGIST BEFORE HAVING AN X-RAY TAKEN.</p>	<p><b>¿EMBARAZADA?</b></p> <p>SI USTED ESTA EMBARAZADA O CREE QUE LO ESTA NOTIFIQUESELO AL TECNICO ANTES DE QUE LE TOMEN LOS RAYOS-X.</p>	<p><b>¿EMBARAZADA?</b></p> <p>SI USTED ESTA EMBARAZADA O CREE QUE LO ESTA NOTIFIQUESELO AL TECNICO ANTES DE QUE LE TOMEN LOS RAYOS-X.</p>
#PS-04EB   \$20.00	#PS-04ER   \$20.00	#PS-04SB   \$20.00	#PS-04SR   \$20.00
<p><b>PREGNANT</b></p> <p>IF YOU ARE PREGNANT, OR THINK YOU MAY BE, TELL THE X-RAY TECHNOLOGIST BEFORE HAVING AN X-RAY TAKEN.</p> <p><b>¿EMBARAZADA?</b></p> <p>SI USTED ESTA EMBARAZADA O CREE QUE LO ESTA NOTIFIQUESELO AL TECNICO ANTES DE QUE LE TOMEN LOS RAYOS-X.</p>	<p><b>PREGNANT</b></p> <p>IF YOU ARE PREGNANT, OR THINK YOU MAY BE, TELL THE X-RAY TECHNOLOGIST BEFORE HAVING AN X-RAY TAKEN.</p> <p><b>¿EMBARAZADA?</b></p> <p>SI USTED ESTA EMBARAZADA O CREE QUE LO ESTA NOTIFIQUESELO AL TECNICO ANTES DE QUE LE TOMEN LOS RAYOS-X.</p>	<p><b>VALUABLES</b></p> <p>PLEASE TAKE YOUR VALUABLES WITH YOU</p>	<p><b>VALUABLES</b></p> <p>PLEASE TAKE YOUR VALUABLES WITH YOU</p>
#PS-08B   \$20.00	#PS-08R   \$20.00	#VS-10EB   \$20.00	#VS-10ER   \$20.00
<p><b>CAUTION</b></p> <p>X-RAY IN USE</p>	<p><b>CAUTION</b></p> <p>X-RAY IN USE</p>	<p><b>CUIDADO</b></p> <p>RAYOS-X EN USO</p>	<p><b>CUIDADO</b></p> <p>RAYOS-X EN USO</p>
#CXR-13EB   \$15.00	#CXR-13ER   \$15.00	#CXR-13SB   \$15.00	#CXR-13SR   \$15.00
 <p>Please Turn Off Your Cellphone -- Thank You</p>	 <p>Please Turn Off Your Cellphone -- Thank You</p>	<p><b>X-RAY ROOM</b></p>	<p><b>X-RAY ROOM</b></p>
#NCP-24B   \$15.00	#NCP-24R   \$15.00	#XRR-19B   \$15.00	#XRR-19R   \$15.00
 <p>No Food No Drink</p>  <p>No Cellphone</p>	 <p>No Food No Drink</p>  <p>No Cellphone</p>	<p><b>FOR THE SAFETY OF YOUR PET</b></p>  <p><b>PLEASE KEEP ON LEASH</b></p>	
#NFD-22B   \$20.00	#NFD-22R   \$20.00	Cat# NPV-09E   \$20.00	



## Caution / MRI Signs

Signs give critical information to patients & technologists. Enhances safety with a front line written warning. Many states adopt certain signs as law as part of a good quality assurance program. Check your local laws or program requirements.

More options available online!



#CRA-15 | \$20.00



#CRA-17 | \$15.00



#CRA-16 | \$20.00



#CRA-18 | \$15.00



#MBN-13E | \$50.00



#MBN-14S | \$50.00



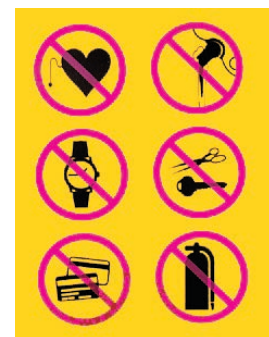
#MBN-15E | \$30.00



#MBN-16S | \$30.00



#CMF-01 | \$20.00



#CMM-06 | 30.00

## Radiation Badge Storage

Provides a central location for all badge related activity. Features an exposure record display area and note clip. Accommodates different styles and sizes of badges. Ring board is also available for Nuclear Medicine and PET.

Badges available from your local provider

CAT#	Style	Badges	Board Size	Price
FB-10N	narrow	10	12" x 5"	\$79.00
FB-20N	narrow	20	12" x 9.25"	\$87.00
FB-40N	narrow	40	12" x 18"	\$135.00
FB-10W	square/hex	10	12" x 9.25"	\$105.00
FB-20W	square/hex	20	12" x 18"	\$135.00
FB-40W*	square/hex	40	12" x 18"	\$199.00
FB-10R	ring(nuc.med.)	10	12" x 5"	\$76.00

\*(The FB-40W comes as two boards, each holding 20 badges.)



HEX



SQUARE



SQUARE



RING



NARROW



WIDE

### SQUARE, HEX, WIDE, OBLONG BADGES

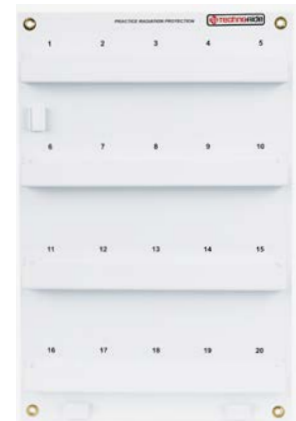
1" to 2" wide



#FB-10W



#FB-40W



#FB-20W

### RING BADGES



#FB-10R

### NARROW BADGES

less than 1" wide



#FB-10N



#FB-20N



#FB-40N

## E-Z X-Ray Storage Boxes

Allows for the efficient storage of x-ray film files. (Sold in case lots.) Strong and durable with reinforced handles. One piece, easy fold assembly. Can be stacked without crushing. Ideal for archiving files, temporary storage, or moving files. Accommodates jackets up to 14" x 17". Upright: lid opens up. Side down: lid opens forward. (printed legend provided both ways.) Sized for OSHA lift load capacity. Each box O.D.: 6.25" x 16" x 19.5". Ships as 30 lbs. per case. 6 cases or less via FedEx/UPS. 7+ cases via motor freight.

**CAT # ETX-70 | \$245.00**

(15 boxes per case)

**Easy to file vertically  
or horizontally!**



Horizontal Filing



Vertical Filing



## Caliper

Accurately measures body thickness for x-ray, up to 21" in depth. Calibrated in both inches and cm. Made of durable aluminum. 1" wide x 21.5" tall x 10 1/8" leg. Ships @ 1 lb.

**#CAL-21 | \$57.00**





ADMINISTRATION/MANUFACTURING

7117 Centennial Blvd. Nashville, TN 37209

Orders can be placed online or sent to [orders@techno-aide.com](mailto:orders@techno-aide.com)

For official Quotes: [quotes@techno-aide.com](mailto:quotes@techno-aide.com)

Any questions can be directed to [customerservice@techno-aide.com](mailto:customerservice@techno-aide.com)

P: 800.251.2629 or 615.350.7030

F: 800.554.6275 or 615.350.7879

[techno-aide.com](http://techno-aide.com)