



PET / Oncology

2020
PRODUCT
GUIDE

CT/PET Resting Chair

Keep your patients comfortable with the right injecting/resting chair for your facility. This recliner comes in a beautifully designed package. Ideal for environments where patients need to sit and relax for long periods of time, such as Oncology and PET Centers. This recliner makes the care, treatment, and recovery of patients more comfortable in an array of clinical settings. Upholstered arm option is also available to replace currently shown wood arms. Features high density foam in the seat, back and armrests for maximum patient comfort. Recliner mechanism features dual gas cylinders for a smooth power assistance during back adjustment and Trendelenburg activation.

#CMT-IC07 |

Size	Seat	Overall	Capacity
Height	21.5"	50"	450 lbs
Width	20.5"	33"	
Depth	23.5"	36"	



Comfort Step Platform

Mounted to left side of recliner and can be folded down when not being used.



Optional IV Pole Mount

Installed on left side of recliner and allows for use of IV pole.

Optional Side Table

Mounted to left side of recliner. Can be folded down when not in use.



Recline Positions

- First or Upright position: Ideal for patient transport and to start IV's
- Second or First Recline position: Ideal for starting IV's and resting
- Third or Full Recline position: Ideal for starting IV's in nervous patients and rest
- Fourth Position or Trendelenburg:
 - The Trendelenburg (or shock) position must be activated by the technologist
 - This cannot be activated by the patient while they are sitting in the recliner



Upright Position



Upright Position with Legrest Extended



First Recline Position



Full Recline Position



Trendelenburg Position

Spin-Lift Adjustable 5-Leg Stool

Solid steel, machined thread screw adjusts height by rotation of the stool cushion. Adjustable height: 18" to 22". 16" x 4" thick seat cushion. 5-leg, die cast aluminum base. 23" base provides excellent stability.

#BAS-40 |



Spin-Lift Adjustable 4-Leg Stool

Solid steel, machined screw adjusts height by rotation of the stool cushion. Adjustable height: 19" to 25.5". Seat cushion is 14.5" x 4" thick. 4-leg chrome steel base with footring.

#BAS-30 |



More options
available online!

Pneumatic 5-Leg Lift Stool

Pneumatic gas cylinder easily adjusts height with convenient under-cushion ring. Adjustable height: 19" to 24". Seat cushion is 16" x 4" thick. 5-leg, die cast aluminum base. 23" base provides excellent stability.

#BPS-20 |



Pneumatic Lift Stool with Backrest

Same design as the BPS-20 with an adjustable backrest and d-ring height lever.

#BPS-22 |



Chairs and Stools

It's important to have the right seating for your CT Department. We have a wide variety of sturdy functional chairs and stools to choose from. From comfortable console chairs to Universal task stools. From patient chairs to room stools. Some of the top sellers shown here.

More options available online!

Patient Chair

With a classic design, sturdy metal frame and comfortable, padded seat and backrest, these premium side chairs are a perfect addition to any CT room or waiting area. Black mesh fabric with black frame.

ZONDI-2924 |



Standard Step Stools

All steel 350-lb. capacity. Skid resistant black mat. 9" high stool with 11" x 13.75" top; 34" tall with handrail. Handrail is 7/8" diameter, chrome-plated tubular steel. Easy assembly.

#BSH-65 |



Our most popular and best selling stool!

Universal Stool

Self-skinned urethane seat & back (black only). Pneumatic lift adjusts seat from 22" to 32". Height adjustable footring. Chrome footrest is independently height adjustable. 5-star nylon resin reinforced base with dual wheel casters. Swiveling seat measures 17" w x 16.5" d 300 lb weight capacity.

ZBCH-USB |



Console Chair

Console Chair intuitively responds to a wide range of body weights and sizes without the need for manual tension or tilt adjustments. Exclusive Poly Flex back slats with contouring mesh support. Mesh back offers breathability for comfortable sitting.

ZONDI-12713 |



Pneumatic Lift Stool with Locking Casters

Pneumatic gas cylinder easily adjusts height with convenient under-cushion ring. Adjustable height: 16" to 21". Seat cushions are 16" x 3.5" thick. Includes a 5-leg, chrome base. Reverse casters with auto-lock when seated. 23" base provides excellent stability.

#BPS-30 |



Choose a stool color option on PG 5!

Pneumatic Lift Stool with Backrest

Same design as the BPS-30 with an adjustable backrest and paddle height lever.

#BPS-32 |



Foot Immobilizer

Foot Immobilizer. 90 degree foot plate is made of rigid black vinyl plastic that is 0.5" thick. Back of legs rest on the base and feet rest against the upright. 12" x 12" x 12". Hook and loop closure holds feet securely against the upright. Perfect for CT Procedures.

#FIL-12 |



Tilt-lid Hampers

Lidded hampers provides sanitary environment for soiled linens. Durable, epoxy coated steel lid. Pedal activated lid with lid prop. Chrome plated steel frame. 3" rubber wheel casters.

#BHS-10 |



Hamper Bags

Drawstring style hamper bag. Designed for use with Hamper BHS-10 (shown to the left). Available in 15 or 45 gallon capacities.

CAT#	Capacity
BAG-18	15 Gallons
BAG-25	45 Gallons

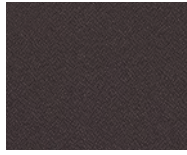


Upholstery Fabric Options For Pneumatic Lift Stools

POLYESTER *Celestial*



1200-Oberon



1201-Rhea



1203-Callisto



1204-Titan



1207-Hyperion



1208-Europa

POLYESTER *Soft sit*



2570-Graphene



2572-Ash



2575-Tsunami



2576-Magma

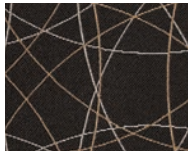


2577-Molten



2578-Kipuka

POLYESTER *Freedom*



3400-Orbit



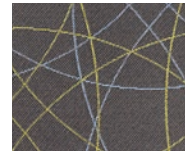
3401-Stealth



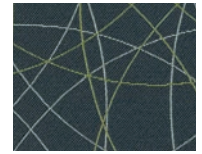
3402-Flight



3403-Cocoa

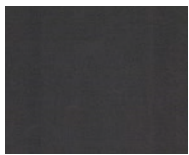


3404-Evening



3408-Oasis

VINYL *Stage*



V50-Cats



V53-Grease



V55-Aida



V52-Chicago



V59-Fame



V58-Shrek

Phlebotomy Chairs

Practical and affordable, these blood drawing chairs feature casual comfort for the patient. They provide a minimal footprint and offer comfort without taking up excess space. Built with a powder-coated frame finish and non-marking nylon glides. Features an adjustable height and depth flip arm that positions in place when in use, the flips out of the way for easy exit. E-Z clean plastic seat for easy cleaning. Our 3 top selling chairs are shown below. We offer an expanded assortment of chairs to fit any need and budget. [Color options on PG. 7.](#)

More options available online!

#PC-6050-U |



Capacity	300 lbs.
Seat	
Height (in) / (cm)	18" / 45.72 cm
Dimensions (in) / (cm)	17.5" x 18" / 44.45cm x 45.72 cm
Arms	
Height Range (in) / (cm)	6" / 15.24 cm
Overall	
Depth (in) / (cm)	25" / 63.50 cm
Width (in) / (cm)	28" / 71.12 cm

#PC-66010 |



Capacity	400 lbs.
Seat	
Height (in) / (cm)	20" / 50.8 cm
Dimensions (in) / (cm)	17.5" x 18" / 44.45cm x 45.72 cm
Arms	
Height Range (in) / (cm)	6" / 15.24 cm
Overall	
Depth (in) / (cm)	26" / 66 cm
Width (in) / (cm)	32" / 78.74 cm

#PC-66000B |



Capacity	700 lbs.
Seat	
Height (in) / (cm)	20" / 50.8 cm
Dimensions (in) / (cm)	35" x 21" / 89cm x 53.34 cm
Arms	
Height Range (in) / (cm)	6" / 15.24 cm
Overall	
Depth (in) / (cm)	29" / 73.66 cm
Width (in) / (cm)	46" / 116.84 cm

Upholstery Fabric Options For Phlebotomy Chairs

PATRIOT PLUS



PAT-427
Blueridge



PAT-8604
Concrete



PAT-8567
Dove



PAT-8602
Oatmeal



PAT-432
Imperial Blue



PAT-8584
Taupe



PAT-8516
Chestnut

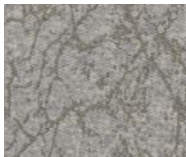


PAT-8615
Berry

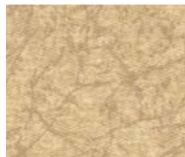
RENAISSANCE



REN-9214
Steel Blue



REN-9201
Cobblestone



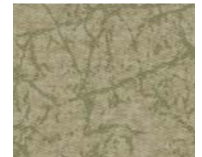
REN-9205
Gypsum



REN-9208
Wineberry



REN-9207
Ice Blue



REN-9210
Cypress

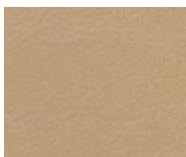


REN-9212
Blue Jade

SAVOY



SAV-401
Vintage Gold



SAV-409
Warm Taupe

Standard Utility Cart

All-purpose utility cart ideal for spognes, linens, accessory items etc. 150 lb capacity. 25" x 19" x 30"h.

#BCS-75



Standard Utility Cart

All-purpose utility cart ideal for spognes, linens, accessory items etc. 150 lb capacity. 25" x 19" x 30"h.

#UC-70



Stainless Steel Utility Cart

All-purpose utility cart ideal for spognes, linens, accessory items etc. 300 lb capacity. 24" x 15" x 32"h.

#BCS-73



The perfect solution for all of your on-the-go storage needs!



NEW Mobile Equipment Cart

This multi-purpose, powder-coated steel cart features black locking casters. Includes rubber bumpers to prevent wall damage. The contoured top is covered in a bacteriological chemical and fungal resistant material. Two handles integrated directly into the cart.

#BCS-85

Overall Size

34.4" (H) x 24.2" (W) x 21.75" (D)

Small Drawer Size (x3)

4" (H) x 19.7" (W) x 19.2" (D)

Large Drawer Size (x1)

10" (H) x 19.7" (W) x 19.2" (D)



IV Stands

Features 1" and 7/8" telescoping, chromed plated steel pole with twist lock adjustments. Adjustable heights. Detachable rams-horn hooks

Economy Twist Lock

Adjustable height range: 46" to 83"; Epoxy coated 4-leg 22" diameter base with easy roll ball bearing casters. 30 lb load capacity under normal use.

5-Leg Base Knob Lock

Adjustable height range: 52" to 92". 5-leg, cast aluminum, 23" diameter base with soft roll, dual wheel casters. 45 lb load capacity under normal use. Available in two or four hooks.



Two or Four hooks available for 5-leg bases!

ECONOMY TWIST LOCK

2-Hook
#BIV-70

5-LEG BASE KNOB LOCK

2-Hook
#BIV-76

4-Hook
#BIV-77



Mayo Instrument Stands

Provides ready access to equipment or instruments. Leg posts are 1" chrome plated steel. Steel, easy-slide extension posts. Stainless steel tray is 19"(L) x 12"(w) and 0.75" Deep.

TABLESIDE

#BMS-80 |
Ht: 34"-54"

MOBILE

#BMS-95 |
Ht: 31"-50"



Ring Badge Board

Provides a central location for all badge related activity. Exposure record display area and note clip. Accommodates different styles and sizes of badges. **Badges not included.**

#FB-10R |

Size: 12"(L) x 5"(W)



The perfect storage solution.
Holds up to 10 ring badges!



ADMINISTRATION/MANUFACTURING

7117 Centennial Blvd. Nashville, TN 37209

Orders can be placed online or sent to orders@techno-aide.com

For official Quotes: quotes@techno-aide.com

Any questions can be directed to customerservice@techno-aide.com

P: 800.251.2629 or 615.350.7030

F: 800.554.6275 or 615.350.7879

techno-aide.com