



Shielding & Barriers

2020
PRODUCT
GUIDE

CHECK OUT WHAT'S NEW FOR 2020

Techno-Aide is ready to kick 2020 off with some amazing new products! Here are a few key highlights you can't afford to miss!

New Imaging Room Barriers | PG.2

Featuring 8 sizes and 3 modern configurations, these new barriers typically ship in just 7 business days!

New Digital Radiographic Tomosynthesis Shielding (DRT) | PG.11

DRT shielding is now available for one of the newest radiographic imaging modalities. Designed for use when sensitive tissue or organs are near the useful beam. Available for the eye, breasts and gonads.

New Image Receptor (IR) Scatter Shields for Lateral Projections

Perfect for thoracic, lumbar, spinal, sacrum and coccyx. Reduce the amount of scatter radiation reaching sensitive image receptors by placing these lead shields on the table posterior to the patient's back.

New Lead Table Saddle Drapes | PG.10

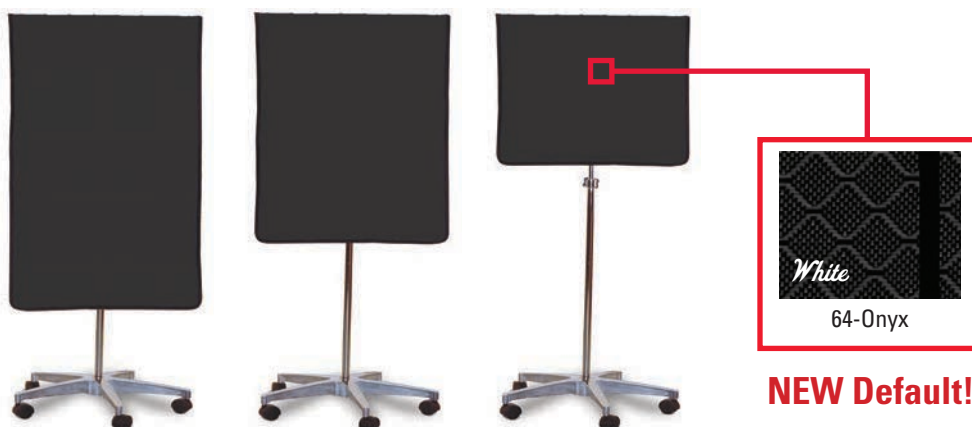
Designed to reduce scatter radiation with C-Arms, our new "saddle style" lead drapes increase protection and save you money!

Updated Omni-Guard Conversion Add-Ons | PG.13

We now offer to convert any Omni-Guard to a curtain or drape with grommets or tabs. Provides extra shielding for areas of concern. We offer all different shapes and sizes designed to meet any need!

New Default Anti-Microbial Fabric for all Lead Drapes

Our new default anti-microbial fabric inhibits the growth of bacteria and other micro-organisms on the surface of your shield!



NEW Imaging Room Barriers

Reliable radiation protection for imaging departments. Large 10" x 12" window has protection equal to 1/16" lead / 1.5mm thick lead lining. Shield extends to the floor for maximum protection. Heavy duty construction. No assembly required. Window center 60" from shield bottom. Medical White powder coat finish. Made in the USA.

Eight sizes and three updated modern configurations to choose from: Wall mounted | stationary | mobile

Call for pricing on all barriers.

Imaging room barriers typically ship in only 7 business days!

Wall Mounted (A) | 10" x 12" Window

Includes mounting brackets on the side and bottom of shield.

CAT.#	Overall Size	Weight
TA-LSW2472	24" (W) x 72" (H)	135 lbs.
TA-LSW2484	24" (W) x 84" (H)	160 lbs.
TA-LSW3072	30" (W) x 72" (H)	165 lbs.
TA-LSW3084	30" (W) x 84" (H)	190 lbs.
TA-LSW3672	36" (W) x 72" (H)	185 lbs.
TA-LSW3684	36" (W) x 84" (H)	220 lbs.
TA-LSW4572	45" (W) x 72" (H)	240 lbs.
TA-LSW4584	45" (W) x 84" (H)	285 lbs.

Floor Mounted (B) | 10" x 12" Window

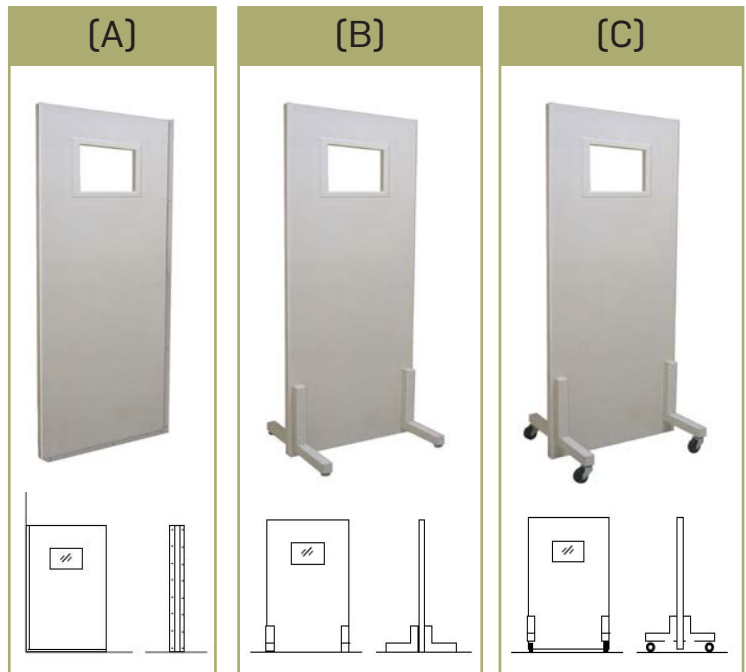
Includes mounting brackets on the bottom of the shield.

CAT.#	Overall Size	Weight
TA-LSS2472	24" (W) x 72" (H)	145 lbs.
TA-LSS2484	24" (W) x 84" (H)	170 lbs.
TA-LSS3072	30" (W) x 72" (H)	175 lbs.
TA-LSS3084	30" (W) x 84" (H)	200 lbs.
TA-LSS3672	36" (W) x 72" (H)	195 lbs.
TA-LSS3684	36" (W) x 84" (H)	230 lbs.
TA-LSS4572	45" (W) x 72" (H)	250 lbs.
TA-LSS4584	45" (W) x 84" (H)	295 lbs.

Mobile Shields (C) | 10" x 12" Window

Includes medical grade casters for easy mobility.

CAT.#	Overall Size	Weight
TA-LSM2472	24" (W) x 72" (H)	145 lbs.
TA-LSM2484	24" (W) x 84" (H)	170 lbs.
TA-LSM3072	30" (W) x 72" (H)	175 lbs.
TA-LSM3084	30" (W) x 84" (H)	200 lbs.
TA-LSM3672	36" (W) x 72" (H)	195 lbs.
TA-LSM3684	36" (W) x 84" (H)	230 lbs.
TA-LSM4572	45" (W) x 72" (H)	250 lbs.
TA-LSM4584	45" (W) x 84" (H)	295 lbs.



Viewing Panel Barriers

Bring radiation protection anywhere you need it with our full body x-ray mobile barriers. Transparent clear upper section for protection and clear field of view. Available in 2.0mm lead equiv., high quality, Schott leaded glass. Powder coated opaque lower section is manufactured with 16 gauge solid steel & 2.0mm Pb equiv. leaded protection and contoured sides. Mobile barrier is supported by heavy grade steel legs with heavy duty medical grade locking casters (two with brakes) for easy mobility. Easy to clean. Crated for secure shipment. Shipping worldwide by ground, air, or sea freight. Manufactured by hand in the USA. Custom sizes available.

Call for pricing on all barriers.

Standard Glass Mobile Barriers

CAT.#	Window Size	Overall Size	Weight
PBMB-3024	30" (W) x 24" (H)	33" (W) x 75" (H)	300 lbs.
PBMB-3048	30" (W) x 48" (H)	33" (W) x 75" (H)	300 lbs.
PBMB-3060	30" (W) x 60" (H)	33" (W) x 75" (H)	300 lbs.
PBMB-3072	30" (W) x 72" (H)	33" (W) x 84" (H)	300 lbs.
PBMB-3624	36" (W) x 24" (H)	40" (W) x 65" (H)	300 lbs.
PBMB-3630	30" (W) x 36" (H)	33" (W) x 75" (H)	300 lbs.
PBMB-4830	48" (W) x 30" (H)	55" (W) x 75" (H)	300 lbs.
PBMB-4836	48" (W) x 30" (H)	51" (W) x 75" (H)	450 lbs.
PBMB-7236	72" (W) x 36" (H)	75" (W) x 75.5" (H)	685 lbs.
PBMB-7240	36" (W) x 24" (H)	40" (W) x 72" (H)	600 lbs.
PBMB-7830	30" (W) x 22" (H)	30" (W) x 78.75" (H)	300 lbs.
PBMB-8436	36" (W) x 60" (H)	36" (W) x 84" (H)	685 lbs.
PBMB-4624	24" (W) x 36" (H)	61" (W) x 36" (H)	250 lbs.

Custom colors
available on PG 6!



Opaque Mobile Barriers

With Windows

CAT.#	Window Size	Overall Size	Weight
PBMW-2472	12" (W) x 10" (H)	24" (W) x 72" (H)	200 lbs.
PBMW-2484	12" (W) x 10" (H)	24" (W) x 84" (H)	300 lbs.
PBMW-3072	12" (W) x 10" (H)	30" (W) x 72" (H)	300 lbs.
PBMW-3084	12" (W) x 10" (H)	30" (W) x 84" (H)	300 lbs.
PBMW-3672	12" (W) x 10" (H)	36" (W) x 72" (H)	320 lbs..
PBMW-3684	12" (W) x 10" (H)	36" (W) x 84" (H)	350 lbs.
PBMW-3978	12" (W) x 10" (H)	39" (W) x 78" (H)	375 lbs.
PBMW-4084	12" (W) x 12" (H)	40" (W) x 84" (H)	375 lbs.
PBMW-4572	12" (W) x 10" (H)	45" (W) x 72" (H)	400 lbs.
PBMW-4584	12" (W) x 10" (H)	45" (W) x 84" (H)	475 lbs.
PBMW-5274	12" (W) x 10" (H)	52" (W) x 74" (H)	475 lbs.

Custom colors
available on PG 6!

Without Windows

CAT.#	Window Size	Overall Size	Weight
PBMW-1472	no window	14" (W) x 72" (H)	175 lbs.
PBMW-2472NW	no window	24" (W) x 72" (H)	200 lbs.
PBMW-3072NW	no window	30" (W) x 72" (H)	200 lbs.
PBMW-3672NW	no window	36" (W) x 72" (H)	200 lbs.



Specialty Mobile Barriers

MR Safe Barriers

CAT.#	Window Size	Overall Size	Weight
PBMB-3024-MRI	30"(W) x 24"(H)	33"(W) x 75"(H)	250 lbs.
PBMB-3048-MRI	30"(W) x 48"(H)	33"(W) x 75"(H)	250 lbs.
PBMB-3060-MRI	30"(W) x 60"(H)	33"(W) x 75"(H)	300 lbs.
PBMB-4830-MRI	48"(W) x 30"(H)	55"(W) x 75"(H)	300 lbs.
PBMB-4836-MRI	30"(W) x 48"(H)	51"(W) x 75"(H)	300 lbs.

Custom colors available on PG 6!

Tilted Barriers

CAT.#	Window Size	Overall Size	Weight
PBMB-TILT	30"(W) x 24"(H)	34"(W) x 70"(H)	300 lbs.

Hour Glass Barriers

CAT.#	Window Size	Cutout Size	Overall Size	Weight
PBMB-HG-AC	24"(W) x 48"(H)	4"(W) x 10.3"(H)	27.5"(W) x 75"(H)	300 lbs.



Standing Shield

Bring 2.0mm Pb equivalency of radiation protection anywhere you need it with our mobile x-ray protective barrier. Can be draped with sterile drape for OR use. Compact design and opaque steel sides. Allows for easy access to procedure floor control pedals. Easy to clean. Locking Caster System. 48" tall x 21.5" wide x 16" deep and 122 lbs.

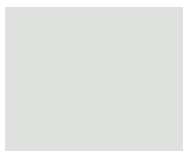
#LPS-HT-1622



COLORS for ALL Window & Panel Barriers

Match your facility decor or just brighten up your exam room with your choice of colorful barriers! All barriers are platinum unless otherwise noted. Additional color options are extra per barrier. Order by including the COLOR NAME and the FOUR-DIGIT Code (#) with your Barrier selection. Color swatches are a representation. Final product color may vary.

Custom colors available for an extra fee!



Platinum
(DEFAULT)



Pink
#3015



Rose
#3014



Rust
#3012



Neutral
#000N



Azure
#5012



Dark Blue
#5026



Sage
#1000



Teal
#6000



Graphite
#7024

Standard Shield

0.5mm Pb equivalency.
Adjustable height: 36" to 60". Stable, five-legged star base. Default color: Anti-Microbial 64-Onyx Black nylon.

0.5mm - SHIELDING

CAT#	Media	Width x Height
LPS-S2424	lead	24" x 24"
LPS-S2436	lead	24" x 36"
LPS-S2448	lead	24" x 48"
LPSG-S2424	lead-free	24" x 24"
LPSG-S2436	lead-free	24" x 36"
LPSG-S2448	lead-free	24" x 48"



Max-Shield

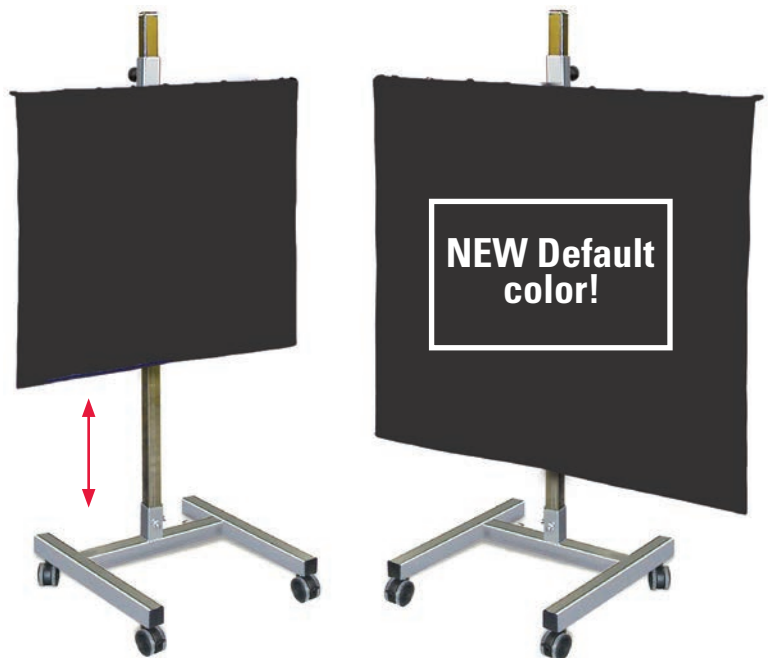
0.5mm Pb equivalency.
Adjustable height: 8" to 60". All steel H-base for maximum stability. Hardened chrome steel post. Posi-Lock height adjustable arm with spring-loaded pin. Default color: Anti-Microbial 64-Onyx Black nylon.

0.5mm - SHIELDING

CAT#	Media	Width x Height
LPS-H3636	lead	36" x 36"
LPS-H4848	lead	48" x 48"
LPSG-H3636	lead-free	36" x 36"
LPSG-H4848	lead-free	48" x 48"

1.0mm - SHIELDING

CAT#	Media	Width x Height
LPS-H3636-1	lead	36" x 36"
LPS-H4848-1	lead	48" x 48"
LPSG-H3636-1	lead-free	36" x 36"
LPSG-H4848-1	lead-free	48" x 48"



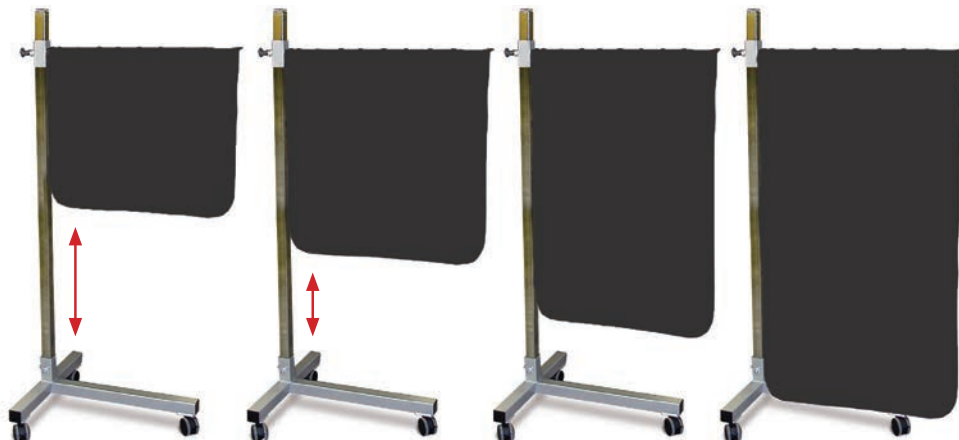
Check out pages 14 & 15 to see all of our mobile shield fabric options!

Solid Panel Deluxe Shield

0.5mm Pb equivalency. Adjustable height: 8" to 60". Steady all steel T-base. Hardened chrome steel post. Posi-Lock height adjustable arm with spring-loaded pin. Default color: Anti-Microbial 64-Onyx Black nylon.

0.5mm - REGULAR LEAD

CAT#	W x H
LPS-T2424S	24" x 24"
LPS-T2430S	24" x 30"
LPS-T2436S	24" x 36"
LPS-T2442S	24" x 42"
LPS-T2448S	24" x 48"
LPS-T3024S	30" x 24"
LPS-T3030S	30" x 30"
LPS-T3036S	30" x 36"
LPS-T3042S	30" x 42"
LPS-T3048S	30" x 48"

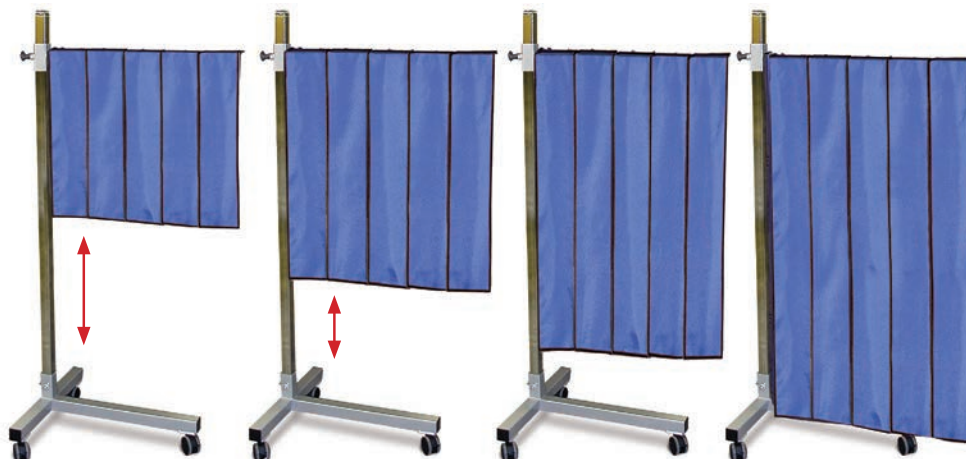


Pleated Panel Deluxe Shield

0.5mm Pb equivalency. 24" has four panels, 30" has five. Adjustable height: 8" to 60". Steady all steel T-base. Hardened chrome steel post. Posi-Lock height adjustable arm with spring-loaded pin. Default color: Anti-Microbial 64-Onyx Black nylon.

0.5mm - REGULAR LEAD

CAT#	W x H
LPS-T2424P	24" x 24"
LPS-T2430P	24" x 30"
LPS-T2436P	24" x 36"
LPS-T2442P	24" x 42"
LPS-T2448P	24" x 48"
LPS-T3024P	30" x 24"
LPS-T3030P	30" x 30"
LPS-T3036P	30" x 36"
LPS-T3042P	30" x 42"
LPS-T3048P	30" x 48"



Check out pages 14 & 15 to see all of our mobile shield fabric options!

Table Drape Shielding

Protect staff from scatter radiation without obstructing the C-Arm. 0.5mm Pb equivalency. Attaches with hook & loop (all included). Order two for double-sided use or see our saddle drapes on PG 10. Available in three widths: 24", 36" and 48". Mix sizes to fill desired width of coverage. Available in three heights: 24", 30" and 36". Default color: Anti-Microbial 64-Onyx Black nylon.



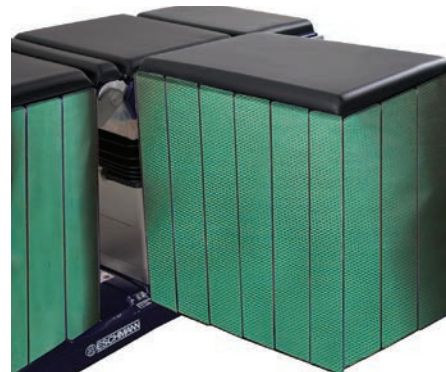
Main Drape

CAT#	Panel Count	Width x Height
TDP-2424	4-panels	24" x 24"
TDP-2430	4-panels	24" x 30"
TDP-2436	4-panels	24" x 36"
TDP-2442	4-panels	24" x 42"
TDP-3024	5-panels	30" x 24"
TDP-3030	5-panels	30" x 30"
TDP-3036	5-panels	30" x 36"
TDP-3042	5-panels	30" x 42"
TDP-3624	6-panels	36" x 24"
TDP-3630	6-panels	36" x 30"
TDP-3636	6-panels	36" x 36"
TDP-3642	6-panels	36" x 42"
TDP-4824	8-panels	48" x 24"
TDP-4830	8-panels	48" x 30"
TDP-4836	8-panels	48" x 36"
TDP-4842	8-panels	48" x 42"
TDP-CUST	Custom	Choose



Anesthesia Drape

CAT#	Panel Count	Width x Height
TDP-2024	3-panels	20" x 24"
TDP-2030	3-panels	20" x 30"
TDP-2036	3-panels	20" x 36"
TDP-2042	3-panels	20" x 42"
TDP-2224	4-panels	22" x 24"
TDP-2230	4-panels	22" x 30"
TDP-2236	4-panels	22" x 36"
TDP-2242	4-panels	22" x 42"
TDP-CUST	Custom	Choose



Easily and securely attaches to any size table!

Check out pages 14 & 15 to see all of our table drape fabric options!

NEW Lead Saddle Drape Table Shields

Our new lead “saddle style” table drape shields greatly reduce scatter radiation with C-Arms! These premium drapes have pleated sides offering unrestricted C-Arm rotation. This design provides 0.5mm Pb equiv. protection on both sides of the table for ultimate protection. The center connection pannel does not contain lead. All saddle drape shields are custom and non-returnable and non-refundable.

Simply fill out the information below and submit for a quote today!

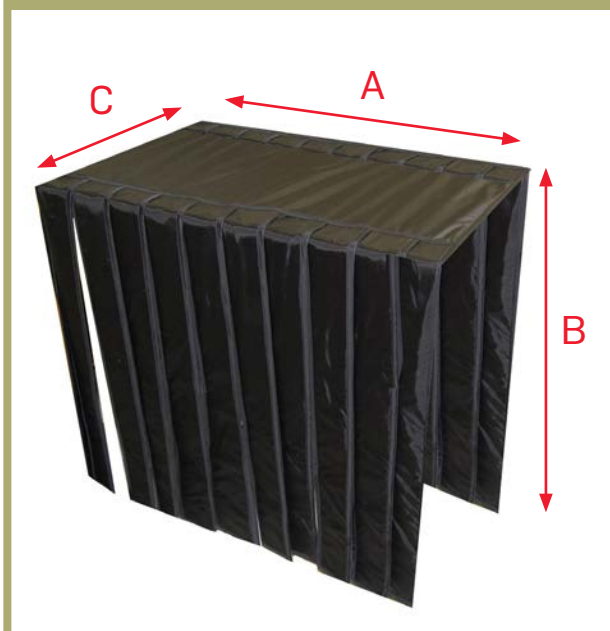
Customer Information

Name	
Phone Number	
Contact Email	
Address Line 1	
Address Line 2	

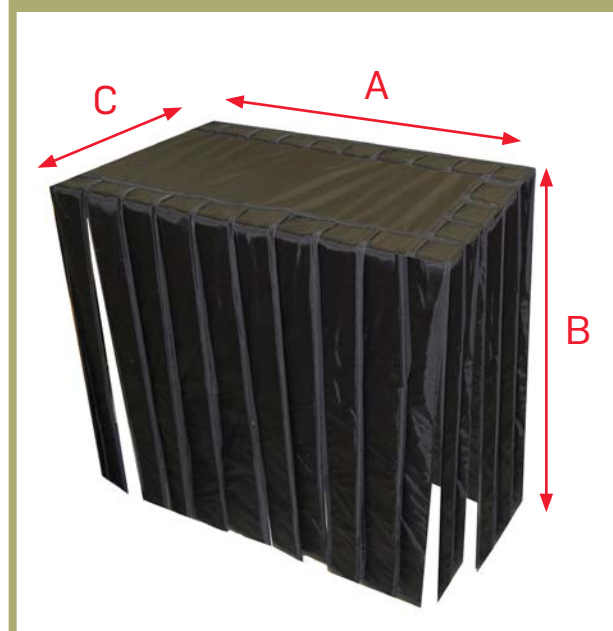
Lead Saddle Drape Quote Information

Two or Three-Sided?	
A: Table Length (in.)	
B: Table Height (in.)	
C: Table Width (in.)	
Drape Color (PG. 14-15)	

Two-Sided Saddle Drape



Three-Sided Saddle Drape



Choose any color fabric for your saddle drape! [pg. 14-15]

NEW Digital Radiographic Tomosynthesis (DRT)

The newest radiographic imaging modality. Shielding is indicated when sensitive tissue or organs are near the useful beam. The lens of the eye, breasts and gonads are frequently shielded from the primary radiation beam.

Mobile T-Base Shield

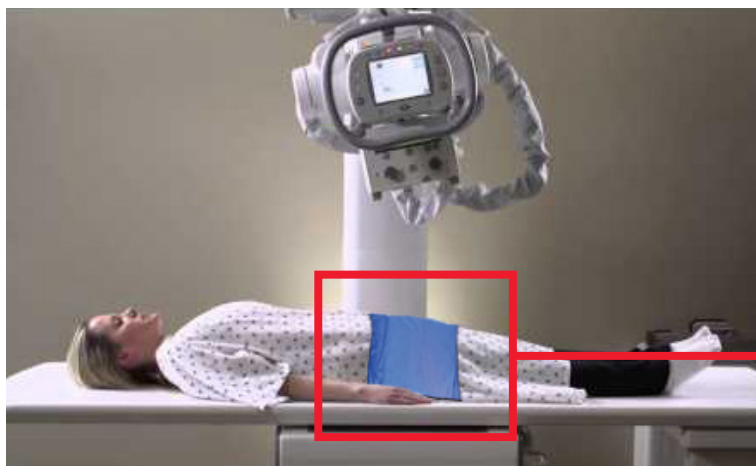
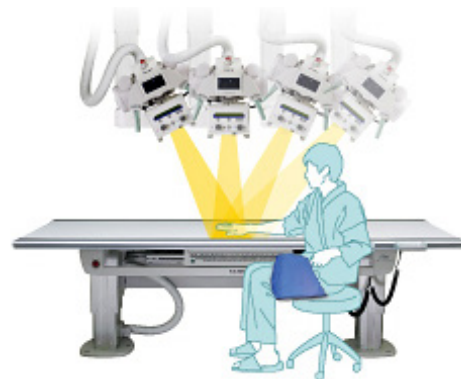
CAT.#	Dimensions
LPS-T2424S	24"(w) x 24" (L)
LPS-T3030S	30"(w) x 30" (L)

Our popular T-base shields have a range of 8" to 60" to provide gonadal shielding for any need!



Tomosynthesis Omni-Guard

CAT.#	Lead Type	Size	Pb Equiv.
OMR-T	Regular	12"(w) x 24" (L)	0.5mm
OML-T	Light Weight	12"(w) x 24" (L)	0.5mm
OMG-T	Lead-Free	12"(w) x 24" (L)	0.5mm
OMSR-T	Regular	12"(w) x 24" (L)	0.375mm
OMSL-T	Light Weight	12"(w) x 24" (L)	0.375mm
OMSG-T	Lead-Free	12"(w) x 24" (L)	0.375mm



Protect patient gonads in supine or sitting positions!

Pick your favorite color fabric for ANY DRT shield! (pg. 14-15)

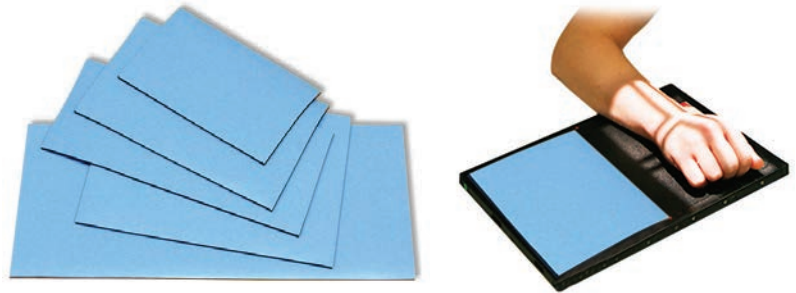
Lead Blockers

Maximize efficiency and optimize use of receptors. Divides receptor for multiple exposures. Covered with blue vinyl laminate. Flexible vinyl-lead positions easily. Cleans easily with most common disinfectants. Provides 1.0mm Pb Equivalency shielding.

CAT. #	Blocker Size	Fits Receptor
FLB-58	5" x 8" (13x18cm)	8" x 10"
FLB-52	5" x 12" (13x30cm)	10" x 12"
FLB-61	6" x 10" (15x24cm)	10" x 12"
FLB-71	7" x 11" (18x28cm)	11" x 14"
FLB-77	7" x 17" (18x43cm)	14" x 17"
FLS-78	Set of FIVE listed above	

NEW

FLB-74	14" x 14" (28x28cm)	14" x 14"
FLB-90	14" x 17" (28x43cm)	14" x 17"
FLB-17	17" x 17" (43x43cm)	17" x 17"



Lead-Lined Table-Top Bin

Store multiple receptors without worry of scatter radiation. 14-gauge welded steel construction with vinyl-lead lining. Provides 1.0mm Pb Equivalency shielding from scatter. Bumper guards protect receptors from impact damage.

#GCHP-LL12

Opening: 16"(W) x 19" (D) x 20" (H)



Lead-Lined Wall Bin

Protect your investment when plates are not in use. Solid steel construction with vinyl-lead lining. Provides 1.0mm Pb Equivalency shielding. Specifically designed for receptor plates. Shipping weight: 25 lbs.

#80LL

Opening: 22"(W) x 5" (D) x 14" (H)
Overall Size: 22"(W) x 5 3/8" (D) x 22" (H)



Omni-Guard

Protective Flexible Shield

Used over a patient or equipment, protects from radiation exposure. Used underneath a patient, prevents scatter radiation. All purpose covering for patients or equipment. 0.5mm Pb equivalency protection. Choose any color fabric.

Size	(Width x Length)
S	(18" x 18")
M	(24" x 24")
L	(24" x 36")
X	(24" x 48")



0.5mm Pb Equivalency

CAT. #	Lead Type	Small	Medium	Large	X-Large
OMR	Regular				
OML	Light Wt.				
OMG	Lead-Free				

0.375mm Pb Equivalency

CAT. #	Lead Type	Small	Medium	Large	X-Large
OMSR	Regular				
OMSL	Light Wt.				
OMSG	Lead-Free				

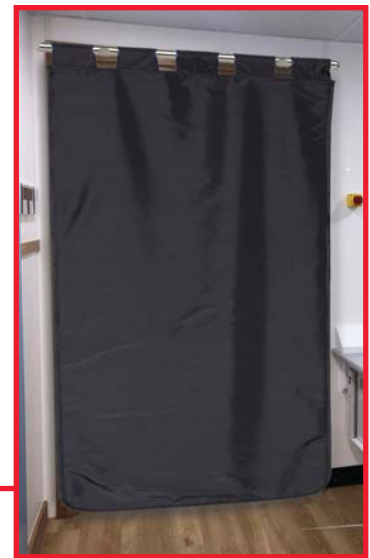
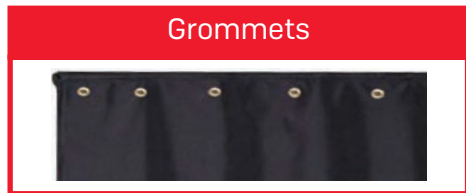
NEW Add-On Conversions

For All Omni-Guards

Make your Omni-Guard more versatile! Want to hang your omni-guard like a curtain or drape? Convert any omni-guard by adding grommets or loops!*

CAT. #	Type	QTY
OM-GR	Grommets	Up to 5
OM-LP	Loops (Tabs)	Up to 5

Shop color and embroidery options on pages 14-16!



Custom Omni-Guards

Don't see the size you need? We are happy to provide a quote based on your needs! Simply fill out the information below and submit for a quote today!

Customer Information	
Name	
Phone Number	
Contact Email	
Address Line 1	
Address Line 2	

Omni-Guard Quote Information	
Length (in.)	
Width (in.)	
Grommets (Y/N)	
Tabs (Y/N)	
Drape Color (PG. 14-15)	

*Desired location and distance between grommets (maximum width of 48") must be noted on any Omni-Guard add-on order.

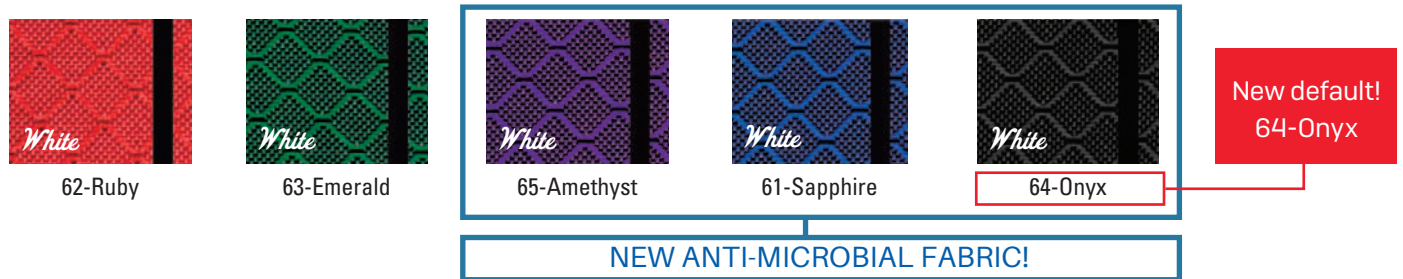
Mobile Shield Fabric Options

NYLON FABRICS

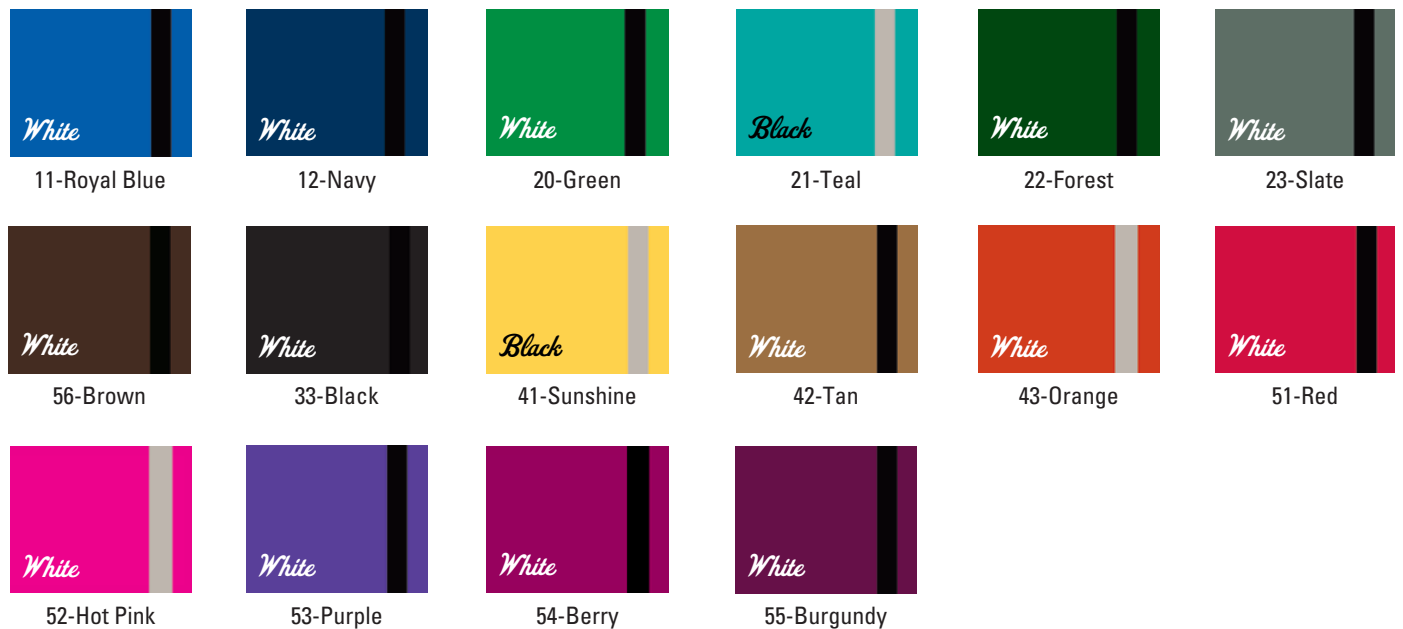
FEATHER RIPSTOP FABRIC Light Weight Nylon, Filament Reinforced Fabric



DIAMOND RIPSTOP FABRIC Medium Weight Nylon, Filament Reinforced Fabric

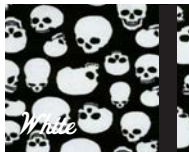


NYLON SOLIDS Liquid Repellent, Light & Supple



SPECIALTY FABRICS

COLORFUL PRINTS *Liquid Repellent, Medium Weight*



NEW 69-Skulls



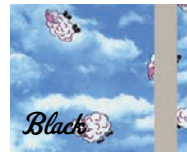
70-Blue Plaid



71-Leopard



72-Lots•0•Dots



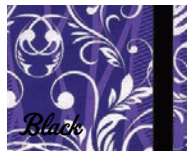
73-Sleepy Sheep



74-Playful Pups



83-Cool Waves



77-Life Vines



78-Waterfall



80-Red Paws



81-Black Paws



76-Blue Paws



82-Pink Camo



85-Digital Camo



86-Camo Night

TEXTURED FABRIC *Textured High Tech Fabrics*



15-Diamondback



16-Crocogator



18-Bronze Tech

Prints are shown
SMALLER than
actual size!

Protective Apparel Add-Ons

Custom Shield Embroidery

Custom embroidery is available on all shields and omni-guards. Customize your product to meet any need! Extra fee applies for all shielding/barrier embroidery.

#OM-EML | For **the first embroidery line**, up to 24 letters.

#OM-EML2 | For **second embroidery line**, up to 24 letters.

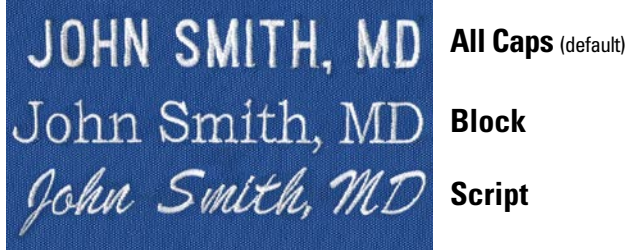


Embroidery Options

We are proud to offer the highest quality embroidery for all shields and omni-guards. Choose from a style below.

Embroidered items are non-returnable & non-refundable.

Available Styles



Embroidery Colors

- White* (default)
- Black* (default)
- Lt. Gray*
- Charcoal*
- Royal Blue*
- Red*
- Yellow*
- Orange*
- Tan*
- Brown*

Binding Colors

- Black** (default)
- Light Gray** (default)
- Navy**
- Royal Blue**
- Red**
- Yellow**
- Orange**
- Tan**
- Pink**
- Purple**
- Green**
- Burgundy**

Protective Media Guide

MEDIA	BENEFITS	PROTECTION	ATTENUATION	WEIGHT
Regular Lead	Most economical and recyclable	100% Lead	0.5mm Pb Equiv. Protection avg. 97% attenuation over 80, 100, 120 KVP	9 - lbs. <small>(based on medium front protection apron)</small>
Lightweight Lead	Lighter than regular lead and recyclable	Lead-Tin	0.5mm Pb Equiv. Protection avg. 96.8% attenuation over 80, 100, 120 KVP	8 - lbs. <small>(based on medium front protection apron)</small>
Lead Free	Lightest Weight, Lead-Free, Environmentally Friendly	Tungsten-Antimony	0.5mm Pb Equiv. Protection avg. 96.6% attenuation over 80, 100, 120 KVP	7 - lbs. <small>(based on medium front protection apron)</small>



ADMINISTRATION/MANUFACTURING

7117 Centennial Blvd. Nashville, TN 37209

Orders can be placed online or sent to orders@techno-aide.com

For official Quotes: quotes@techno-aide.com

Any questions can be directed to customerservice@techno-aide.com

P: 800.251.2629 or 615.350.7030

F: 800.554.6275 or 615.350.7879

techno-aide.com