



General Accessories

2019
PRODUCT
GUIDE

NEW Contrast Warmer

This model features a solid locking door and LCD temperature display which is easily seen. Each warmer is constructed using a high-grade aluminum interior and a cold-rolled powder-coated steel exterior. All models are supplied with both a fixed bottom shelf and an adjustable shelf. The heating element is located behind the back panel of the unit to provide for uniform heat and excellent utilization of space.

CW-201 \$1850.00

Electrical 115 volt/50-60 Hz or 230volt/50-60 Hz
Temp Range Ambient +5°C to 60°C
Stability @ 37°C ±1.5°C
Uniformity @ 37°C ±1°C
Weight 22 lb./10 kg

Chamber		Overall Dimensions	
Volume	0.8 cu. ft.	Area	1.7 ft.2
Dimensions (in)	1½ x 12 x 10½	Dimensions (in)	13 x 14 x 16¼
Dimensions (cm)	29.2 x 30.5 x 26.7	Dimensions (cm)	33 x 35.6 x 41.3



NEW Medium Narcotics Locker

Medium size stainless steel narcotics locker designed to federal standards. Can be wall mounted or placed inside another cabinet. Features a single door with two core locks, keyed different. Keys cannot be removed in the unlock position. Welded heavy guage double wall reinforced construction. Full height piano hinge with welded pin. One shelf, height adjustable. Optional door switch activates optional remote warning light when door is open. Size: 15" w x 11" h x 9" d

Cat# TANL-10

Can be wall mounted or placed in another cabinet



NEW Large Narcotics Locker

Large size stainless steel narcotics locker designed to federal standards. Features two doors (one behind the other). Each door has a core lock, keyed different. Keys cannot be removed in the unlock position. Outer door cannot be closed if key is left in inner door. Welded heavy guage double wall reinforced construction. Full height piano hinge with welded pin. Three shelves, height adjustable. Optional door switch activates optional remote warning light when door is open. Size: 15" w x 11" h x 9" d

Cat# TANL-20



Radiation Badge Storage Boards

Provides a central location for all badge related activity. Exposure record display area and note clip. Accommodates different styles and sizes of badges. Ring board is also available for Nuclear Medicine and PET.

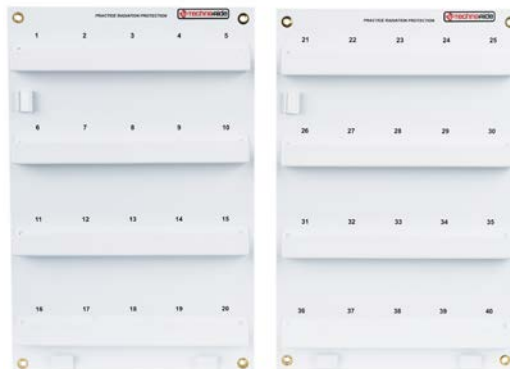
cat. #	style	badges	board size
FB-10N	narrow	10	12" x 5"
FB-20N	narrow	20	12" x 9.25"
FB-40N	narrow	40	12" x 18"
FB-10W	square/hex	10	12" x 9.25"
FB-20W	square/hex	20	12" x 18"
FB-40W*	square/hex	40	12" x 18"
FB-10R	ring(nuc.med.)	10	12" x 5"

Badges available from your local provider

*(The FB-40W comes as two boards, each holding 20 badges.)



SQUARE, HEX, WIDE, OBLONG BADGES 1" to 2" wide



RING BADGES



NARROW BADGES less than 1" wide



Portable Blanket Warmer Bags

With AC or 12V Power Supplies

Designed for radiology and CT departments, these specially insulated blanket warmers keep warmed blankets warm. The durable and washable nylon exterior bag features a handy hook and loop closing flap. The removable interior heating elements keep the temperature at a steady 130° - 140°F when plugged into an optional, low voltage power supply. These lightweight and portable bags are designed and assembled in the USA and come with a 1-year warranty.



HOLDS 2-3 BLANKETS

#BWS-03-AC
#BWS-03-DC
#BWS-03-CB
Call for pricing

HOLDS 4-5 BLANKETS

#BWS-05-AC
#BWS-05-DC
#BWS-05-CB
Call for pricing

HOLDS 6-7 BLANKETS

#BWS-07-AC
#BWS-07-DC
#BWS-07-CB
Call for pricing

Power Options

Choose between an AC Adapter (AC), DC Adapter (DC) or both (CB)!



Blanket Warmer Cabinets

Designed for radiology and CT centers. These stainless steel blanket warmers are adjustable from 98° to 180°F (37° to 82°C) with the help of an intelligent 4-digit LED controller. With no moving parts and an audio-visual temperature alarm, these heavy duty units are designed for safety and built to last. All three units come with hospital grade power cords. The two largest units include locking casters. Operational at either 120VAC or 220VAC. All units are UL & CSA approved.



COUNTERTOP UNIT

Holds 7 bed sized blankets.
16" x 24" x 20"
70 lbs.

#BW-210
Call for pricing

SHORT CABINET

Holds 25 bed sized blankets.
22" x 29" x 40"
170 lbs.

#BW-710
Call for pricing

TALL CABINET

Holds 50 bed sized blankets.
22" x 29" x 70"
350 lbs.

#BW-1400
Call for pricing

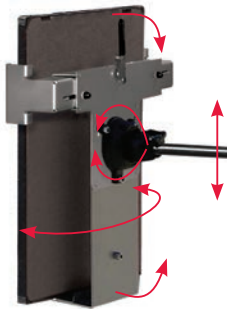
Mobile Image Receptor Holders

ALL MOBILE UNITS INCLUDE:

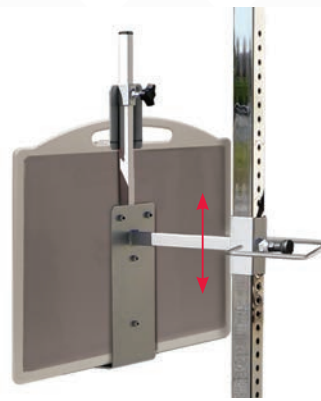
Vertical range from bottom of image receptor: floor-to-54". Posi-Lock height adjustable arm with spring-loaded pin. Features 60" chromed steel post. 24" H-Base with locking casters. Broad base prevents tipping. Platinum baked enamel finish. 1 1/2" deep channels accept grids and caps.



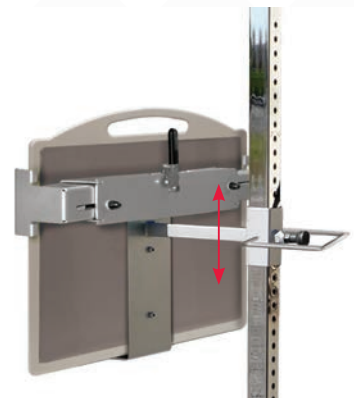
SERIES-B
Tilt & Rotate Models
MCH-33 & MCH-37



SERIES-C
Tilt & Rotate Models
MCH-33 & MCH-37



SERIES-B
Non-Tilt, Non-Rotate Model **MCH-40**



SERIES-C

Tilt & Rotate Range of Motion:

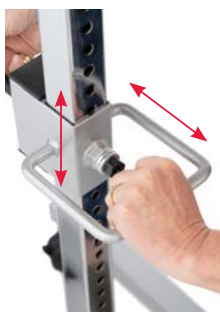
- Straight Vertical
- Incline Forward
- Incline Backward
- Rotate or Oblique Tilt
- Face Up
- Face Down
- Anywhere in Between



SERIES C
No height limit.
Accommodates
13 1/2" to 20 1/2"
widths.



SERIES B
Has a height limit of
20". Will accommodate
imaging receptors of
any width.



- (1) Pull the Pin
- (2) Slide the Holder
- (3) Release to Lock

All models feature the safe and secure Posi-Lock Handle



3" Medical Grade Casters for ease of mobility.



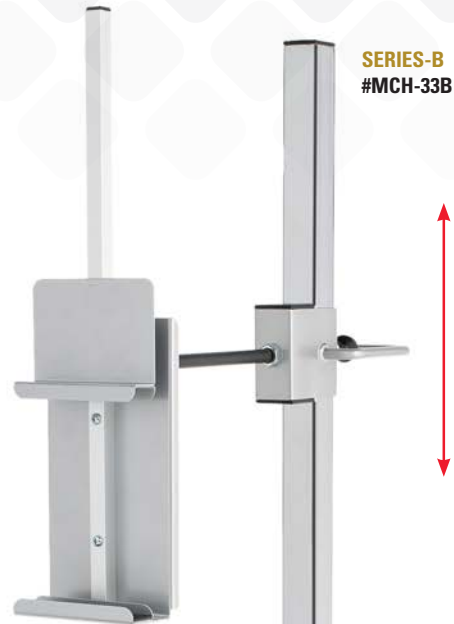
Easy to clean 24" H-Base with locking casters for stability.

Mobile Tilt & Rotate Image Receptor Holders - Series B

Standard arm length provides maximum stability. Fully articulating holder for a variety of receptors. See additional specs on page 4.

Weight limit for both Series-B and Series-C is 12 lbs.

SERIES-B
#MCH-33B



SERIES-B
#MCH-33B

Hardened Chrome Steel Post provides Stability and Durability

Easy to clean H-Base provides safe, smooth movement!



Mobile Tilt & Rotate Image Receptor Holders - Series C

Standard arm length provides maximum stability. Fully articulating holder for a variety of receptors. See additional specs on page 4.

Weight limit for both Series-B and Series-C is 12 lbs.

SERIES-C
#MCH-33C



Mobile Non-Tilt, Non-Rotate Holder for Heavy Receptors - Series B

Features a fixed position holder (non-articulating) for stability of heavier receptors. See additional specs on page 4.

Weight limit for both Series-B and Series-C is 22 lbs.

SERIES-B
#MCH-40B



Mobile Non-Tilt, Non-Rotate Holder for Heavy Receptors - Series B

Features a fixed position holder (non-articulating) for stability of heavier receptors. See additional specs on page 4.

Weight limit for both Series-B and Series-C is 22 lbs.

SERIES-C
#MCH-40C

SERIES-C
#MCH-40C



Hardened Chrome Steel Post provides Stability and Durability

Easy to clean H-Base provides safe, smooth movement!

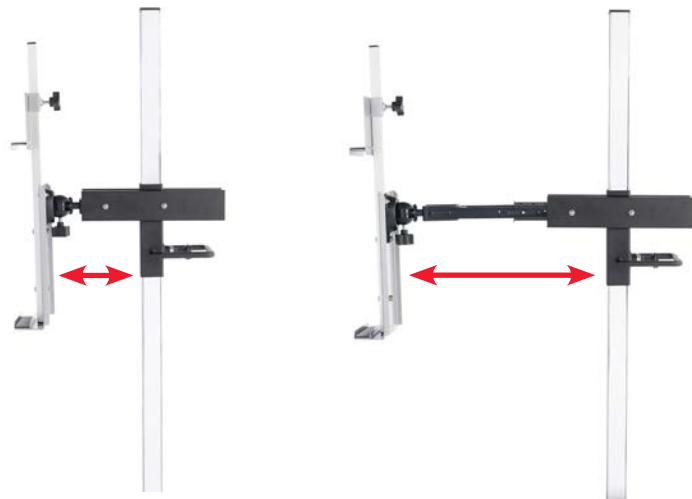


Mobile Tilt & Rotate Extending Arm Receptor Holders - Series B

Extends image receptors 11" to 23" from post. See additional specs on page X. Heavy DR receptors may pose a tipping risk when fully extended. See additional specs on page 4.

Weight limit for both Series-B and Series-C is 12 lbs.

SERIES-B
#MCH-37B



SERIES-B
#MCH-37B



Easy to clean H-Base provides safe, smooth movement!



Mobile Tilt & Rotate Extending Arm Receptor Holders - Series C

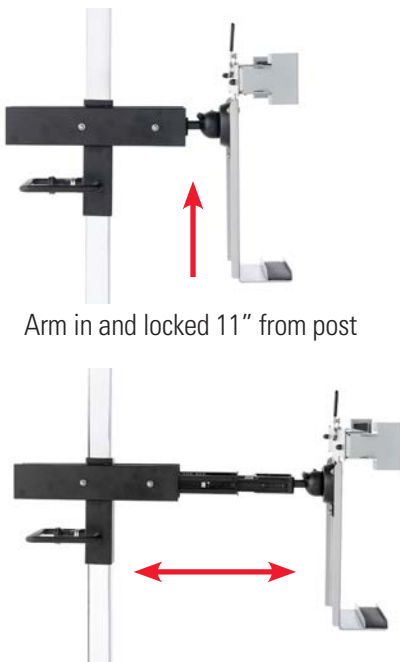
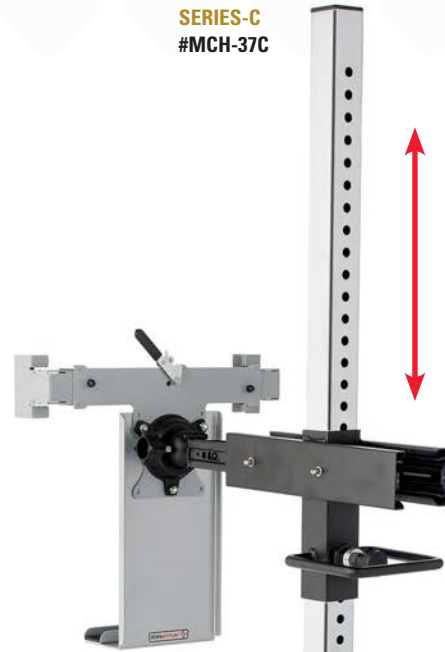
Extends image receptors 11" to 23" from post. Heavy DR receptors may pose a tipping risk when fully extended. See additional specs on page 4.

Weight limit for both Series-B and Series-C is 12 lbs.

SERIES-C
#MCH-37C

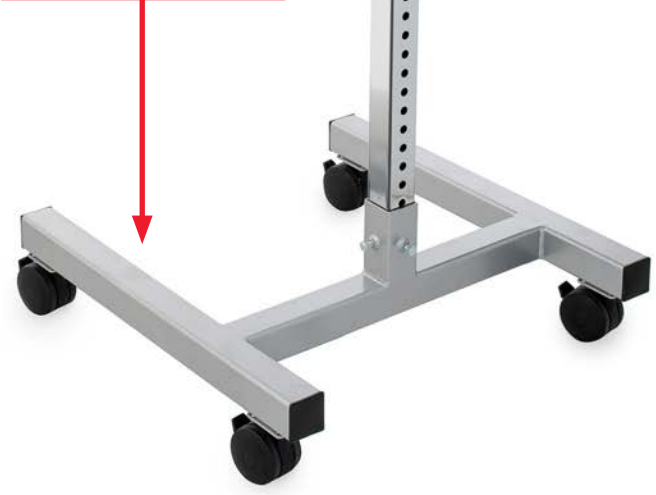


SERIES-C
#MCH-37C



Arm in and locked 11" from post

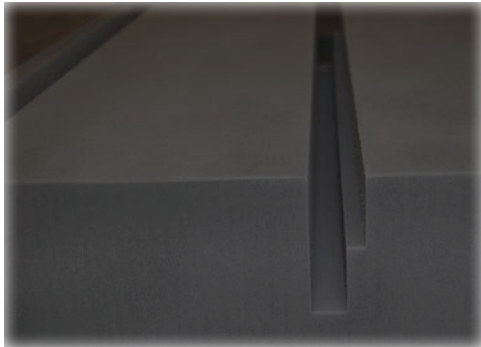
Easy to clean H-Base provides safe, smooth movement!



2-Step Weight Bearing Platform

Allows for weight bearing imaging of the knees, ankles, and feet. Three receptor slots on the top platform and two slots on the bottom platform. A 52" high safety rail provides for patient stability.

Comfort Top: black, 6 lb high density crosslink closed cell foam for comfort and support. 350-lb. weight capacity. Platform heights: 11 1/2" and 16 1/4". All steel frame with 30"l x 20"w base.



Lower Channel is 1 1/16" wide to accommodate different receptors

Upper Channel is 1 1/16" wide to accommodate GE Flash Pad.

Easy to move with two medical-grade casters.



COMFORT TOP

#WMP-16

Actual Wt: 64 lbs

Ships@ 105 lbs

*For customers wanting this stand with no foam on the bottom step, order #WMP-24



2-Step Weight Bearing Platform

Allows for weight bearing imaging of the knees, ankles, and feet. Three receptor slots on the top platform and two slots on the bottom platform. A 52" high safety rail provides for patient stability.

Durability Top: black, high-density, solid polyethylene with anti-slip matting. 350-lb. weight capacity. Platform heights: 11 1/2" and 16 1/4". All steel frame with 30" length x 20" width base.



Lower Channel is 1 1/16" wide to accommodate different receptors

Upper Channel is 1 1/16" wide to accommodate GE Flash Pad.

Easy to move with two medical-grade casters.



DURABILITY TOP

#WMP-22

Actual Wt: 105 lbs

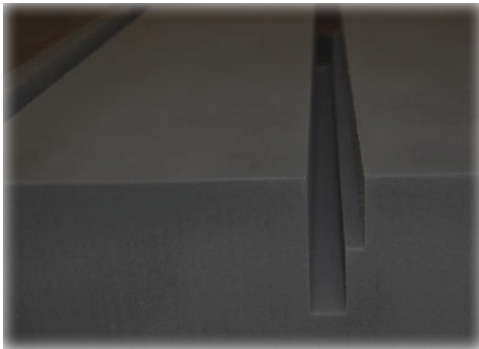
Ships@ 160 lbs



3-Step Weight Bearing Platform

Designed for tube stands that don't go low enough to the floor to allow for proper weight bearing imaging. Three receptor slots on the top platform and two slots on the middle platform. 59" high safety rail provides for patient stability.

Comfort Top: black, 6 lb. high-density crosslink closed cell foam for comfort and support. 250-lb. weight capacity. Platform heights: 8 1/2", 19 1/2", and 23". All steel frame with 42" l x 20" w base.



Lower Channel is 1 1/16" wide to accommodate different receptors

Upper Channel is 1 1/16" wide to accommodate GE Flash Pad.



Easy to move with two medical-grade casters.



COMFORT TOP
#WMP-14
 Actual Wt: **92 lbs**
 Ships @ 158 lbs



3-Step Weight Bearing Platform

Designed for tube stands that don't go low enough to the floor to allow for proper weight bearing imaging. Three receptor slots on the top platform and two slots on the middle platform. 59" high safety rail provides for patient stability.

Durability Top: black, high-density, solid polyethylene with anti-slip matting. 350-lb. weight capacity. Platform heights: 8 1/2", 19 1/2", and 23". All steel frame with 42" l x 20" w base.



Lower Channel is 1 1/16" wide to accommodate different receptors

Upper Channel is 1 1/16" wide to accommodate GE Flash Pad.

Easy to move with two medical-grade casters.



DURABILITY TOP
#WMP-28
 Actual Wt: **133 lbs**
 Ships@ 200 lbs



AP Weight Bearing Receptor Protectors

Provides supportive platform when patient is required to stand on the receptor. Accommodates DR, CR, and analog panels. Standard models support patients up to 425-lbs. Frame is resilient aluminum with a clear polycarbonate support surface. Includes an easy-lift handle.

STANDARD PROTECTORS

cat. #	receptor size	receptor style
WBC-0810W	8" x 10"	cassette or wireless panel
WBC-1012W	10" x 12"	cassette or wireless panel
WBC-1417W	14" x 17"	cassette or wireless panel
WBC-1417T*	14" x 17"	tethered DR panel
WBC-1717T*	17" x 17"	tethered DR panel

*Must provide what size or model cassette will be used



EXTRA CAPACITY CARBON FIBER PROTECTORS

Perfect for Ortho, Podiatry, and Bariatrics. 800-lb weight capacity.

cat. #	receptor size	receptor style
WBC-1417CF	14" x 17"	carbon fiber wireless
WBC-1417CFT	14" x 17"	carbon fiber tethered DR



Weight Bearing Receptor Holder

Economical solution for weight bearing examinations Durable 6 lb crosslink closed cell black foam is easy to clean and provides great support for weight bearing studies. Overall size 17 1/2" x 11 1/2" x 4" tall. Channel is 1 3/16" wide to accommodate most imaging receptors.

Cat.#YXWB



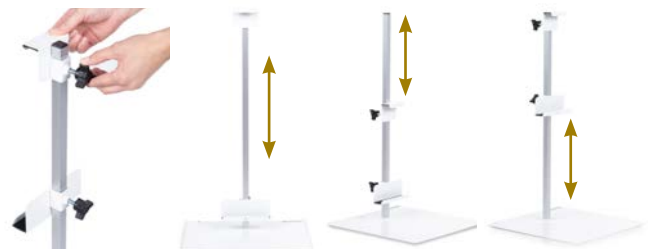
Tabletop Lateral Receptor Holders

Accepts grids and caps (channel is 1 1/4" d). Upper and lower channels slide on 24" post. Holds receptors up to 24" inches tall. Base plate slides under patient or pad. 35LCH upper channel includes a R & L marker. 40LDH features an upper channel that fits into handle and an extra large base for stability. Upper and lower channels are lined with no-skid vinyl.

24" Variable Height Standard Holder
#35LCH



24" Variable Height DR-Plate Holder
#40LDH



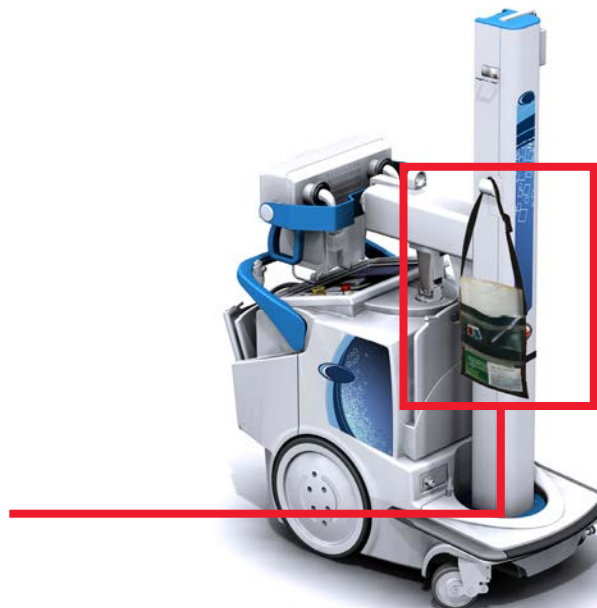
Mobile Imaging Caddy

Keep everything at your fingertips for mobile imaging. Conveniently hangs from mobile imager mast. Large pouch for Receptor Covers. Medium pouch for accessories. Two small pouches for markers, pens, and other small items. Heavy gauge, reinforced vinyl. Caddy is 11" w x 16" h with a strap that extends to 24". Accessories are sold separately.

Default is Hunter Green. Red, Yellow, Black, Royal Blue, Mint Green is also available at no additional cost.

More colors
available
online!

#PMA-C4



Machine sold separately

Receptor Covers

Disposable; prevents cross-contamination. Keeps receptors clean and dry from exposure to bodily fluids, solutions, plaster, etc. Specifically designed to fit your imaging receptors. Non-sterile. Latex-Free! 2 mil polyethylene is transparent to x-ray. Can also be used to cover positioning sponges. Available in Standard Overlock and Ziplock™ closures.

Standard Flip-Lip Closure

Allows safe handling and positioning of: CR-Receptors, Cassettes, and DR-Receptors. *Fits 23" x 25" DR-Receptors with Grids!

cat. #	fits receptor size	quantity
CCS-08	8" x 10"	1 box of 100
CCS-10	8" x 10"	1 case of 500
CCM-10	10" x 12"	1 box of 100
CCM-12	10" x 12"	1 case of 500
CCL-14	14" x 17"	1 box of 100
CCL-17	14" x 17"	1 case of 500
CCC-DR	20" x 20"	1 box of 100
CCD-DR	20" x 20"	1 case of 500
CCXL-24*	23" x 25"	1 box of 100
CCXL-26*	23" x 25"	1 case of 500



Compact Dispenser
Box of 100 covers



Shown:
five 100-pc boxes
inside one 500-pc case

Ziplock™ Closure

Disposable bag securely seals in image receptors. Provides Maximum Protection from cross contamination. *Fits 23" x 25" DR-Receptors with Grids!

cat. #	fits receptor size	quantity	
CCZ-14	14" x 17"	1 box of 100	(2 mil)
CCZ-17	14" x 17"	1 case of 500	(2 mil)
CCXZ-24*	23" x 25"	1 box of 100	(2 mil)
CCXZ-26*	23" x 25"	1 case of 500	(2 mil)
CCH-24*	23" x 25"	1 box of 50	(4 mil)
CCH-26*	23" x 25"	1 case of 250	(4 mil)

Protect your investment!



Plastic Bag Dispensing

Some facilities cannot accept products in corrugated cartons. This assortment of Receptor Covers are provided in dispensing bags to meet those requirements and keep your supply clean and organized. These covers are the very same styles and quality as our originals shown above.

STANDARD BAGS

CAT #	Fits Receptor Size	Quantity	
CCL-14-B	14" x 17"	1 bag of 100	(2 mil)
CCC-DR-B	20" x 20"	1 bag of 100	(2 mil)
CCXL-24-B*	23" x 25"	1 bag of 100	(2 mil)

ZIPLOCK™ BAGS

CAT #	Fits Receptor Size	Quantity	
CCZ-14-B	14" x 17"	1 bag of 100	(2 mil)
CCXZ-24-B*	23" x 25"	1 bag of 100	(2 mil)
CCH-24-B*	23" x 25"	1 bag of 50	(4 mil)

Cover does not
compromise
any image!



Standard Step Stools

All steel 350-lb. capacity. Skid resistant black mat. 9" high stool with 11" x 13 3/4" top; 34" tall with handrail. Handrail is 7/8" dia. chrome-plated tubular steel. Easy assembly.

#BSH-65



Most Popular Best Selling Stool!

Bariatric Step Stools

Bariatric 1000-lb. capacity. Step has anti-slip gripper strips. Flared base legs to prevent tipping. Step Only: 19" long x 15" wide x 8" high. Handrail model height is 36".

#BBH-69



#BRF-45

Set of four (4) rubber tips for standard and bariatric step stools.



Heavy Duty Step Stools

Bariatric 600-lb. capacity. Steps have a skid resistant black mat surface. Height: Single Step: 8 3/4" high step; 34 1/2" with handrail. Double Step: 8" & 16" high steps; 43" with handrail. Handrail is 1" dia. chrome-plated 16g steel.

#BBS-61



#BBD-63



#BBD-66



IV Stands

Features 1" and 7/8" telescoping, chromed plated steel pole with twist lock adjustments. Adjustable heights. Detachable rams-horn hooks

Economy Twist Lock

Adjustable height range: 46" to 83"; Epoxy coated 4-leg 22" diameter base with easy roll ball bearing casters. 30 lb load capacity under normal use.

5-Leg Base Knob Lock

Adjustable height range: 52" to 92". 5-leg, cast aluminum, 23" diameter base with soft roll, dual wheel casters. 45 lb load capacity under normal use. Available in two or four hooks.



Two or four hooks available for 5-Leg base!

ECONOMY TWIST LOCK

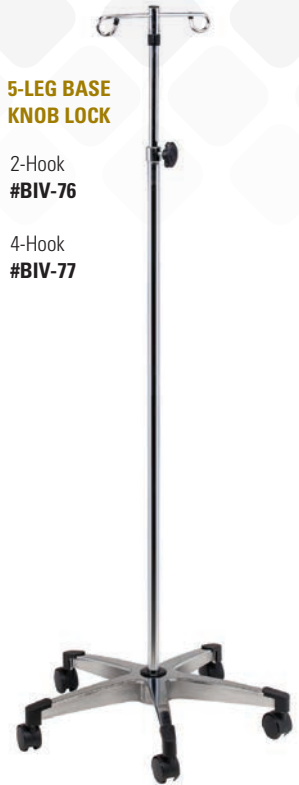
2-Hook
#BIV-70



5-LEG BASE KNOB LOCK

2-Hook
#BIV-76

4-Hook
#BIV-77



Mayo Instrument Stands

Provides ready access to equipment or instruments. Leg posts are 1" chrome plated steel. Steel, easy-slide extension posts. Stainless steel tray is 12" x 19" x 3/4" deep.

TABLESIDE
#BMS-80
Ht: 34"-54"



MOBILE
#BMS-95
Ht: 31"-50"



Standard Exam Lamp

Flexible gooseneck arm with 360° adjustable steel shade. Chrome steel stand has adjustable height range: 50" to 74". Uses one 60-watt incandescent bulb (not included). Weighted stationery base or 23" diameter mobile base.

#BEL-90



Eco-Series LED Light

Provides a large, bright working surface to ensure clinical efficiency. The 23" gooseneck arm is easy to maneuver for precise and versatile positioning. The long-life, eco-friendly LED bulb saves on energy and cost with more than twice the average life of other LED exam lights available. Easy to clean and cool to the touch for better safety.

#BEL-98



Pneumatic Lift Stool with Locking Casters

Pneumatic gas cylinder easily adjusts height with convenient under-cushion ring. Adjustable height: 16" to 21". 16" x 3.5" thick seat cushion. 5-leg, chrome base. Reverse casters auto-lock when seated. 23" base provides excellent stability.

#BPS-30



Stool Color options available on PG 23

Pneumatic Lift Stool with Backrest

#BPS-32

*BPS-30 with adjustable backrest and paddle height lever shown



Spin-Lift Adjustable 5-Leg Stool

Solid steel, machined thread screw adjusts height by rotation of the stool cushion. Adjustable height: 18" to 22". 16" x 4" thick seat cushion. 5-leg, die cast aluminum base. 23" base provides excellent stability.

#BAS-40



Spin-Lift Adjustable 4-Leg Stool

Solid steel, machined screw adjusts height by rotation of the stool cushion. Adjustable height: 19" to 25 1/2". 14 1/2" x 4" thick seat cushion. 4-leg chrome steel base with footring.

#BAS-30



Pneumatic 5-Leg Lift Stool

Pneumatic gas cylinder easily adjusts height with convenient under-cushion ring. Adjustable height: 19" to 24". 16" x 4" thick seat cushion. 5-leg, die cast aluminum base. 23" base provides excellent stability.

#BPS-20



Pneumatic Lift Stool with Backrest

#BPS-22

*BPS-20 with adjustable backrest and D-ring height lever shown

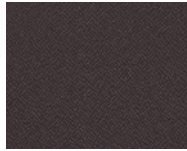


Upholstery Fabric Options

POLYESTER Celestial



1200-Oberon



1201-Rhea



1203-Callisto



1204-Titan



1207-Hyperion



1208-Europa

POLYESTER Soft sit



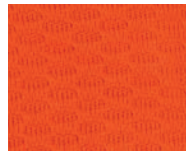
2570-Graphene



2572-Ash



2575-Tsunami



2576-Magma

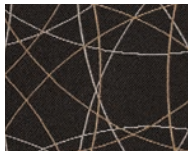


2577-Molten

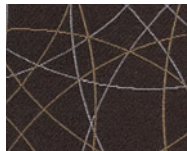


2578-Kipuka

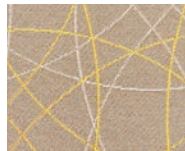
POLYESTER Freedom



3400-Orbit



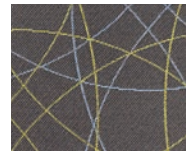
3401-Stealth



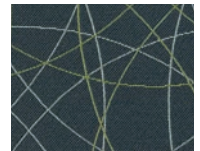
3402-Flight



3403-Cocoa

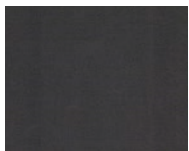


3404-Evening

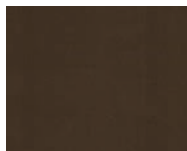


3408-Oasis

VINYL Stage



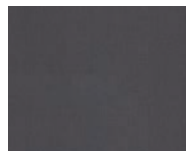
V50-Cats



V53-Grease



V55-Aida



V52-Chicago



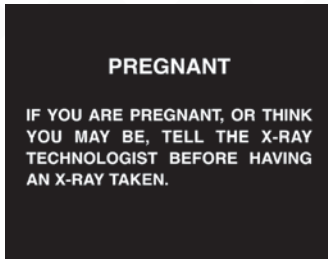
V59-Fame



V58-Shrek

Department Signs

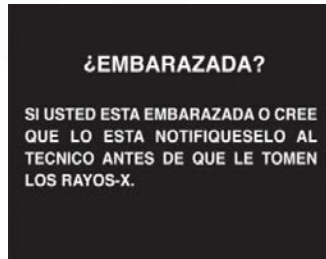
All signs are constructed of durable 1/8" Trovixel™, a plastic specific to the sign industry. Double-faced tape is attached to the back for mounting. Large Signs are 8" x 10". Small Signs are 4" x 10". The large MRI "Danger" Signs are 12" x 18".



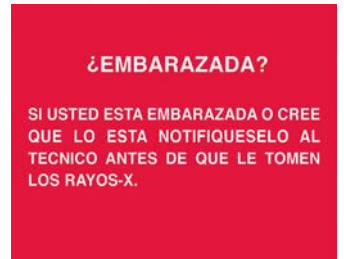
#PS-04EB



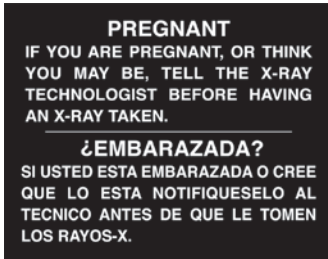
#PS-04ER



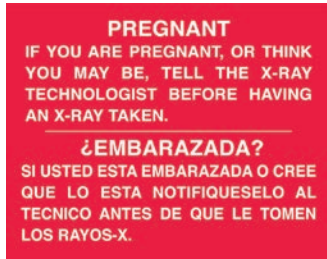
#PS-04SB



#PS-04SR



#PS-08B



#PS-08R



#VS-10EB



#VS-10ER



#CXR-13EB



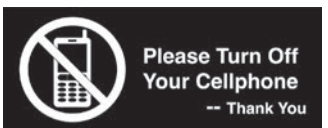
#CXR-13ER



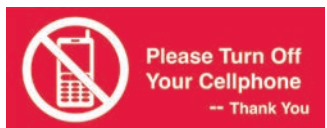
#CXR-13SB



#CXR-13SR



#NCP-24B



#NCP-24R



#XRR-19B



#XRR-19R



#NFD-22B



#NFD-22R

Caution / MRI Signs

Signs give critical information to patients & technologists. Enhances safety with a front line written warning. Many states adopt certain signs as law as part of a good quality assurance program. Check your local laws or program requirements.

More options available online!



#CRA-15



#CRA-17



#CRA-16



#CRA-18



#MBN-13E



#MBN-14S



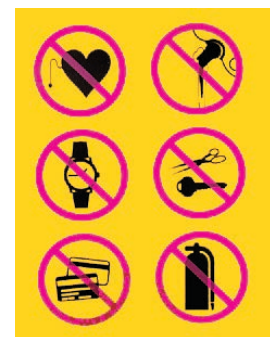
#MBN-15E



#MBN-16S



#CMF-01



#CMM-06



ADMINISTRATION/MANUFACTURING

7117 Centennial Blvd. Nashville, TN 37209

Orders can be placed online or sent to orders@techno-aide.com

For official Quotes: quotes@techno-aide.com

Any questions can be directed to customerservice@techno-aide.com

P: 800.251.2629 or 615.350.7030

F: 800.554.6275 or 615.350.7879

techno-aide.com