



# Protective Apparel

2019  
PRODUCT  
GUIDE

## CHECK OUT WHAT'S NEW FOR 2019

2019 will be another year of innovation for Techno-Aide. With a greater focus on providing a safer working environment, our clients will see an assortment of new products and some incredible upgrades to our existing line. With almost too many updates to list, here are a few key innovations that are a must for the new year!

### **New Default Color, Fabric and Protection**

Our new Anti-Microbial Sapphire Blue is an easy to clean filament reinforced fabric. Offering the greatest durability and top microbial protection available. In 2019 Techno-Aide will feature 0.375mm protection with multiple new fabric options to offer the best selection and protection on the market.

Found on pages 33-34

### **New Anti-Microbial Fabrics**

With patient and staff safety as our top priority, these new fabrics inhibit the growth of bacteria and other microorganisms. With six exciting colors to choose from these fabrics are the best solution on the market for any sized business.

Found on page 33

### **New Tie Guard Apron**

This year Techno-Aide will feature an all new Tie Guard Apron design. Incredible protection meets value pricing. The double fold binding ensures strength and tear resistance. Includes a 1" buckle closure that is long enough to tie. A free dual pocket to store an attached thyroid collar and a separate pocket for other items makes this a top choice for 2019.

Found on page 6

### **New Apron Accessories**

New apron racks, apron peg racks and a wide belt vest guard plus option make Techno-Aide a one stop shop for all apparel accessories. Our best fit chart now features gender selection for the most accurate fit available.

Found on pages 8, 25-29

### **New Grommet Options**

Created to work with the Techno-Aide Omni Guards. These new additions allow you to hang the omni-guard as a curtain. Techno-Aide is happy to offer complete customization for distance between grommet locations up to 48".

Found on page 17

### EZ-Guard (Hook & Loop)

EZ-On / EZ-Off. Our Most Popular Front Protection apron with an easy criss-cross back and **Hook and Loop** closure on the front. Perfect for every day imaging protection. Double-fold binding for strength and tear resistance. Concealed shoulder pads for extra comfort. Free dual pocket to store an attached thyroid collar and a separate pocket for other items.

#### 0.5mm Pb Equivalent Protection

cat. #	lead type	petite/ sm/ med	lg / xl	2X / 3X
EVR	Regular			
EVL	Light Wt.			
EVG	<b>LMG Lead-Free</b>			

#### 0.375mm Pb Equivalent Protection

cat. #	lead type	petite/ sm/ med	lg / xl	2X / 3X
EVSR	Regular			
EVSL	Light Wt.			
EVSG	<b>LMG Lead-Free</b>			



**Our Most Popular Apron!**

See Best-Fit Sizing Chart on PG 30



### EZ-Guard (Buckle)

EZ-On / EZ-Off. Our Most Popular Front Protection apron with an easy criss-cross back and **Buckle** closure on the front. Perfect for those who prefer a quick adjustable closure. Double-fold binding for strength and tear resistance. Concealed shoulder pads for extra comfort. Free dual pocket to store an attached thyroid collar and a separate pocket for other items.

#### 0.5mm Pb Equivalent Protection

cat. #	lead type	petite/ sm/ med	lg / xl	2X / 3X
EBR	Regular			
EBL	Light Wt.			
EBG	<b>LMG Lead-Free</b>			

#### 0.375mm Pb Equivalent Protection

cat. #	lead type	petite/ sm/ med	lg / xl	2X / 3X
EBSR	Regular			
EBSL	Light Wt.			
EBSG	<b>LMG Lead-Free</b>			

## Flex-Guard (Hook & Loop)

Front Protection apron with flexible stretch criss-cross back and **Hook and Loop** closure on the front. Excellent fit for full day imaging protection by providing less weight on the shoulders and snug fit at the back. Double-fold binding for strength and tear resistance. Free dual pocket to store an attached thyroid collar and a separate pocket for other items. Concealed shoulder pads for extra comfort.

### 0.5mm Pb Equivalent Protection

cat. #	lead type	petite/ sm/ med	lg / xl	2X / 3X
FVR	Regular			
FVL	Light Wt.			
FVG	<b>LMG Lead-Free</b>			

### 0.375mm Pb Equivalent Protection

cat. #	lead type	petite/ sm/ med	lg / xl	2X / 3X
FVSR	Regular			
FVSL	Light Wt.			
FVSG	<b>LMG Lead-Free</b>			



See Best-Fit Sizing Chart on PG 30



## Flex-Guard (Buckle)

Front Protection apron with flexible stretch criss-cross back and **Buckle** closure on the front. Excellent fit for full day imaging protection by providing less weight on the shoulders and snug fit at the back. Double-fold binding for strength and tear resistance. Free dual pocket to store an attached thyroid collar and a separate pocket for other items. Concealed shoulder pads for extra comfort.

### 0.5mm Pb Equivalent Protection

cat. #	lead type	petite/ sm/ med	lg / xl	2X / 3X
FBR	Regular			
FBL	Light Wt.			
FBG	<b>LMG Lead-Free</b>			

### 0.375mm Pb Equivalent Protection

cat. #	lead type	petite/ sm/ med	lg / xl	2X / 3X
FBSR	Regular			
FBSL	Light Wt.			
FBSG	<b>LMG Lead-Free</b>			

## Surgery-Guard

This surgical drop off apron easily slides off under a sterile gown with no arm holes. No worry about compromising sterile fields in the OR. Crossover shoulder to **Hook and Loop** closure for quick release at the waist. Wide shoulders with concealed shoulder pads to optimize weight distribution and provide extra comfort. Double-fold binding for strength and tear resistance. Free dual pocket to store an attached thyroid collar and a separate pocket for other items.

### 0.5mm Pb Equivalent Protection

cat. #	lead type	petite/ sm/ med	lg / xl	2X / 3X
SRR	Regular			
SRL	Light Wt.			
SRG	<b>LMG Lead-Free</b>			

### 0.375mm Pb Equivalent Protection

cat. #	lead type	petite/ sm/ med	lg / xl	2X / 3X
SRSR	Regular			
SRSL	Light Wt.			
SRSG	<b>LMG Lead-Free</b>			



See Best-Fit Sizing Chart on PG 30



## OR-Guard

Flexible-back apron that slides off easily under sterile gowns with break away shoulders and **Hook and Loop** closure at the hips. Double-fold binding for strength and tear resistance. Free dual pocket to store an attached thyroid collar and a separate pocket for other items. Concealed shoulder pads for extra comfort.

### 0.5mm Pb Equivalent Protection

cat. #	lead type	petite/ sm/ med	lg / xl	2X / 3X
ORR	Regular			
ORL	Light Wt.			
ORG	<b>LMG Lead-Free</b>			

### 0.375mm Pb Equivalent Protection

cat. #	lead type	petite/ sm/ med	lg / xl	2X / 3X
ORSR	Regular			
ORSL	Light Wt.			
ORSG	<b>LMG Lead-Free</b>			

## Ortho-Guard

Built-in Back-Guard for Maximum Support. Tethered belt can be adjusted vertically and laterally for effective back support. Back strap assures best fit and comfort. 0.5mm Pb equiv. front protection. Free dual pocket and shoulder pads.

### 0.5mm Pb Equivalent Protection

cat. #	lead type	petite/ sm/ med	lg / xl	2X / 3X
OGR	Regular			
OGL	Light Wt.			
OGG	<b>LMG Lead-Free</b>			

### 0.375mm Pb Equivalent Protection

cat. #	lead type	petite/ sm/ med	lg / xl	2X / 3X
OGSR	Regular			
OGSL	Light Wt.			
OGSG	<b>LMG Lead-Free</b>			



Shoulder strap included!

See Best-Fit Sizing Chart on PG 30



Buckle

## Econo-Guard

Excellent Protection and Value Priced. Comes with 1" buckle closure that is long enough to tie. Double-fold binding for strength and tear resistance. **There is no pocket for this garment. Not compatible with attached thyroid collar. If pocket and attached collar are required, please refer to our EZ guard aprons.**

### 0.5mm Pb Equivalent Protection

cat. #	lead type	petite/ sm/ med	lg / xl	2X / 3X
EGR	Regular			
EGL	Light Wt.			
EGG	<b>LMG Lead-Free</b>			

### 0.375mm Pb Equivalent Protection

cat. #	lead type	petite/ sm/ med	lg / xl	2X / 3X
EGSR	Regular			
EGSL	Light Wt.			
EGSG	<b>LMG Lead-Free</b>			

## NEW Tie-Guard Apron

Excellent protection and value prices. Comes with a 1" buckle closure that is long enough to tie. 0.5mm Pb equivalency protection. Double fold binding for strength and tear resistance. **Free dual pocket** to store an attached thyroid collar and a separate pocket for other items. Concealed shoulder pads for extra comfort.

### 0.5mm Pb Equivalency Protection

cat. #	lead type	petite/ sm/ med	lg / xl	2X / 3X
EPR	Regular			
EPL	Light Wt.			
EPG	<b>LMG Lead-Free</b>			

### 0.375mm Pb Equivalency Protection

cat. #	lead type	petite/ sm/ med	lg / xl	2X / 3X
EPSR	Regular			
EPSL	Light Wt.			
EPSG	<b>LMG Lead-Free</b>			



## Care-Guard Pregnancy Apron

### Special Protection for Fetal Care

**Front Details:** Front protection with flexible back straps. 1.0mm Pb equivalency over fetal area, 0.5mm over remaining area. 22" x 24" pregnancy panel can be removed at completion of pregnancy to create a standard Flex-Guard Apron with 0.5mm Pb equivalency protection. **Hook and Loop** closure is fast and easy. Free dual pocket to store an attached thyroid collar or other items and free concealed shoulder pads for extra comfort. Double-fold binding for strength and tear resistance.

**Back Details:** Works with the front apron for full protection. 0.25mm Pb equivalency. 1" buckle closure (long enough to tie) in front.

### Care-Guard Front Only

cat. #	lead type	regular	tall/full
CGL	Light Wt.		
CGG	<b>LMG Lead-Free</b>		

### Care-Guard Back Only

cat. #	lead type	regular	tall/full	size
CBL	Light Wt.			Tall
CBG	<b>LMG Lead-Free</b>			Full

Size	Dimensions
Reg	24" x 36"
Tall	24" x 40"
Full	28" x 38"



Front Apron

Default apronette color is 61-Sapphire Blue, unless specified.

Attached Thyroid Collar Available. See Thyroid collars on pg. 11.



Front & Back



Back Apron



## Max-Wrap

Wrap around coat style garment offers 0.5mm Pb equiv. protection in front and 0.25mm in back. Solid panels provide no overlap meaning less bulk, better fit, better freedom of movement and secure closure. Double-fold binding for strength and tear resistance. Breakaway left shoulder and flexible back is fast and easy. Secure closure at the waist and shoulder for optimal fit. Flexible back support panels. Free dual pocket to store an attached thyroid collar and a separate pocket for other items. Concealed shoulder pads for extra comfort. **Hook and Loop** closure with flexible back is fast and easy to put on. Excellent protection for full coverage.

### 0.5mm Pb Equivalent Protection

cat. #	lead type	petite/ sm/ med	lg / xl	2X / 3X
MWL	Light Wt.			
MWG	<b>LMG Lead-Free</b>			

### 0.375mm Pb Equivalent Protection

cat. #	lead type	petite/ sm/ med	lg / xl	2X / 3X
MWSL	Light Wt.			
MWSG	<b>LMG Lead-Free</b>			



See Best-Fit Sizing Chart on PG 30



## Max-Guard Plus

Overlap wrap around coat style garment offers 0.5mm Pb equiv. protection in front and 0.25mm in back. Distributes weight between shoulders and hips. **Hook and Loop** closure with inside elastic Back Guard for excellent back support. Double-fold binding for strength and tear resistance. Free dual pocket to store an attached thyroid collar and a separate pocket for other items. Concealed shoulder pads for extra comfort. Excellent protection for full coverage.

### 0.5mm Pb Equivalent Protection

cat. #	lead type	petite/ sm/ med	lg / xl	2X / 3X
MXL	Light Wt.			
MXG	<b>LMG Lead-Free</b>			

### 0.375mm Pb Equivalent Protection

cat. #	lead type	petite/ sm/ med	lg / xl	2X / 3X
MXSL	Light Wt.			
MXSG	<b>LMG Lead-Free</b>			



## NEW Wide Belt Vest Guard Plus

Full front overlap design distributes weight between shoulders and hips and provides full coverage. Provides .5mm Pb equiv protection in the front and .25mm Pb equiv. protection in the back. New inside elastic back guard and front belt assures a snug fit with maximum back support. Double-fold binding offers strength and tear resistance. Hook and Loop closure is fast and easy. Free dual pocket to store an attached thyroid collar and a separate pocket for other items. Concealed shoulder pads for extra comfort. 1" safety buckle at shoulder.

### 0.5mm Pb Equivalency Protection

cat. #	lead type	petite/ sm/ med	lg / xl	2X / 3X
VPR	Regular			
VPL	Light Wt.			
VPG	<b>LMG Lead-Free</b>			

### 0.375mm Pb Equivalency Protection

cat. #	lead type	petite/ sm/ med	lg / xl	2X / 3X
VPSR	Regular			
VPSL	Light Wt.			
VPSG	<b>LMG Lead-Free</b>			



See Best-Fit Sizing Chart on PG 30



## Vest-Wrap

### Less Bulk, Better Fit for Freedom of Movement

Separate Men and Women's styles for best comfort. Distributes weight between shoulders and hips. 0.5mm Pb equivalency protection front, 0.25mm back. **Hook and Loop** closure with flexible back. Generous armholes for EZ-fit. Free dual pocket and shoulder pads. Double-fold binding for strength and tear resistance. Concealed shoulder pads for extra comfort. Free dual pocket to store an attached thyroid collar and a separate pocket for other items.

### Vest-Wrap Female 0.5mm Pb Equivalency

cat. #	lead type	petite/ sm/ med	lg / xl	2X / 3X
VGR	Regular			
VGL	Light Wt.			
VGG	<b>LMG Lead-Free</b>			

### Vest-Wrap Male 0.5mm Pb Equivalency

cat. #	lead type	petite/ sm/ med	lg / xl	2X / 3X
VBR	Regular			
VBL	Light Wt.			
VBG	<b>LMG Lead-Free</b>			

## Vest-Guard Male

Full front overlap design saves weight. Distributes weight between shoulders and hips. 0.5mm Pb equivalency protection front, 0.25mm back. **Hook and Loop** closure is fast and easy. Free dual pocket and shoulder pads. Double-fold binding for strength and tear resistance. Concealed shoulder pads for extra comfort. Free dual pocket to store an attached thyroid collar and a separate pocket for other items.

### 0.5mm Pb Equivalency Protection

cat. #	lead type	petite/ sm/ med	lg / xl	2X / 3X
VMR	Regular			
VML	Light Wt.			
VMG	<b>LMG Lead-Free</b>			

### 0.375mm Pb Equivalency Protection

cat. #	lead type	petite/ sm/ med	lg / xl	2X / 3X
VMSR	Regular			
VMSL	Light Wt.			
VMSG	<b>LMG Lead-Free</b>			

(Vests do not include the two 1" safety buckles. If you would like these as a FREE Add-On, please specify at the time of ordering.)



See Best-Fit Sizing Chart on PG 30



## Kilt-Guard Male

### All Day Comfort for the Lower Body

Designed for best comfort.. Weight is distributed evenly around hips. **Wrap around protection: 0.5mm Pb Eq front, 0.25mm back.** **Hook and Loop** closure with 2" safety buckle. Free pocket and waist pad. Double-fold binding for strength and tear resistance.

cat. #	lead type	petite/ sm/ med	lg / xl	2X / 3X
KMR	Regular			
KML	Light Wt.			
KMG	<b>LMG Lead-Free</b>			



## Vest-Guard Female

Full front overlap design saves weight. Distributes weight between shoulders and hips. 0.5mm Pb equivalency protection front, 0.25mm back. **Hook and Loop** closure is fast and easy. Free dual pocket and shoulder pads. Double-fold binding for strength and tear resistance. Concealed shoulder pads for extra comfort. Free dual pocket to store an attached thyroid collar and a separate pocket for other items.

### 0.5mm Pb Equivalency Protection

cat. #	lead type	petite/ sm/ med	lg / xl	2X / 3X
VFR	Regular			
VFL	Light Wt.			
VFG	<b>LMG Lead-Free</b>			

### 0.375mm Pb Equivalency Protection

cat. #	lead type	petite/ sm/ med	lg / xl	2X / 3X
VFSR	Regular			
VFSL	Light Wt.			
VFSG	<b>LMG Lead-Free</b>			

(Vests do not include the two 1" safety buckles. If you would like these as a FREE Add-On, please specify at the time of ordering.)



See Best-Fit Sizing Chart on PG 30



## Skirt Guard

### All Day Comfort for the Lower Body

Designed for best comfort.. Weight is distributed evenly around hips. **Wrap around protection: 0.5mm Pb Eq front, 0.25mm back.** **Hook and Loop** closure with 2" safety buckle. Free pocket and waist pad. Double-fold binding for strength and tear resistance.

cat. #	lead type	petite/ sm/ med	lg / xl	2X / 3X
SFR	Regular			
SFL	Light Wt.			
SFG	<b>LMG Lead-Free</b>			



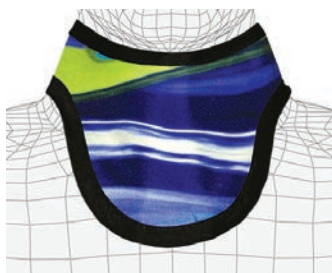
Features an easy to use 2" safety buckle!

## Protection Options

What to know when comparing protective apparel.

MEDIA	BENEFITS	PROTECTION	ATTENUATION	WEIGHT
Regular Lead	Most economical and recyclable	100% Lead	0.5mm Pb Equiv. Protection avg. 97% attenuation over 80, 100, 120 KVP	9 - lbs. (based on medium front protection apron)
Lightweight Lead	Lighter than regular lead and recyclable	Lead-Tin	0.5mm Pb Equiv. Protection avg. 96.8% attenuation over 80, 100, 120 KVP	8 - lbs. (based on medium front protection apron)
"LMG" <sup>™</sup> *	Lightest Weight, Lead-Free, Environmentally Friendly	Tungsten-Antimony	0.5mm Pb Equiv. Protection avg. 96.6% attenuation over 80, 100, 120 KVP	7 - lbs. (based on medium front protection apron)

## Thyro-Guards



### Standard

Binding all around means affordable comfort and flexibility.



### No Binding

No binding means extra comfort, flexibility and lighter weight.



### Mid-Binding

No binding at the top means extra comfort under the chin.

### 0.5mm Pb Equivalent Protection

CAT. #	Lead Type	CAT. #	Lead Type	CAT. #	Lead Type
TYR	Regular	TNR	Regular	TVR	Regular
TYL	Light Wt.	TNL	Light Wt.	TVL	Light Wt.
TYG	<b>LMG Lead-Free</b>	TNG	<b>LMG Lead-Free</b>	TVG	<b>LMG Lead-Free</b>

### 0.375mm Pb Equivalent Protection

CAT. #	Lead Type	CAT. #	Lead Type	CAT. #	Lead Type
TYSR	Regular	TNSR	Regular	TVSR	Regular
TYSL	Light Wt.	TNSL	Light Wt.	TVSL	Light Wt.
TYSG	<b>LMG Lead-Free</b>	TNSG	<b>LMG Lead-Free</b>	TVSG	<b>LMG Lead-Free</b>

## Attached Standard

## Attached No Binding

## Attached Mid-Binding

### 0.5mm Pb Equivalent Protection

CAT. #	Lead Type	CAT. #	Lead Type	CAT. #	Lead Type
TAR	Regular	TCR	Regular	TWR	Regular
TAL	Light Wt.	TCL	Light Wt.	TWL	Light Wt.
TAG	<b>LMG Lead-Free</b>	TCG	<b>LMG Lead-Free</b>	TWG	<b>LMG Lead-Free</b>

### 0.375mm Pb Equivalent Protection

CAT. #	Lead Type	CAT. #	Lead Type	CAT. #	Lead Type
TASR	Regular	TCSR	Regular	TWSR	Regular
TASL	Light Wt.	TCSL	Light Wt.	TWSL	Light Wt.
TASG	<b>LMG Lead-Free</b>	TCSG	<b>LMG Lead-Free</b>	TWSG	<b>LMG Lead-Free</b>

## Thyro-Guards



### Pediatric

Binding all around means affordable comfort and flexibility.



(Default color: Berry with Pink ribbon only)

### Mammography

No binding means extra comfort, flexibility and lighter weight.

#### 0.5mm Pb Equivalent Protection

CAT. #	Lead Type
TPR	Regular
TPL	Light Wt.
TPG	<b>LMG Lead-Free</b>

CAT. #	Lead Type
TMR	Regular
TML	Light Wt.
TMG	<b>LMG Lead-Free</b>

#### 0.375mm Pb Equivalent Protection

CAT. #	Lead Type
TPSR	Regular
TPSL	Light Wt.
TPSG	<b>LMG Lead-Free</b>

CAT. #	Lead Type
TMSR	Regular
TMSL	Light Wt.
TMSG	<b>LMG Lead-Free</b>

### Buckle Closure

If you prefer buckle closure to regular hook & loop, add "-B" to any of the collar numbers above and add an extra charge to the price. (call for pricing)



Buckle closure option available!

### Attached Thyroid Collars

#### All Attached Thyroid Collars include:

- 1) A snap ring for easy collar attachment.
- 2) Attach anytime with tethered strap.
- 3) Unique 2-in-1 pocket design.

[store collar in one pocket and use other pocket for accessories]

Standard, No-Binding, and Mid-Binding collars are 6" tall x 6 1/2" wide x 24" strap.



Attached Thyroid option and our unique 2-in-1 pocket design!

## Breast-Guard

### Female Breast Protection

Allows full viewing of anatomy EXCEPT sensitive breast tissue. Hook and Loop strap drapes around the neck. Adjust shields anywhere along the strap. 0.5mm Pb equiv. protection. Sets are two shields plus one strap. Sold as a set.

#### Two convenient sizes:

Adult: 6" wide x 7" high; Child: 4" wide x 4 1/2" high.

cat. #	lead type	size
BSR	Regular	A (Adult)
BSL	Light Wt.	C (Child)
BSG	<b>LMG Lead-Free</b>	



## Scolio-Guard

Unprotected neck for cervical view. Wrap around belt allows custom positioning of the open area. No-slip fabric underside. 0.5mm Pb equiv. protection.

**Adult:** 7.5" w x 26" L

**Child:** 6.0" w x 20" L

cat. #	lead type	size
SCR	Regular	A, C
SCL	Light Wt.	A, C
SCG	<b>LMG Lead-Free</b>	A, C

## Scolio-Guard2

These breast guards offer the same as Scolio-Guards, but with the added **Hook and Loop** strip on the front to fold up out of the way when needed. Also available in Adult and Child sizes.

**Adult:** 7.5" w x 26" L

**Child:** 6.0" w x 20" L

cat. #	lead type	size
SCR2	Regular	A, C
SCL2	Light Wt.	A, C
SCG2	<b>LMG Lead-Free</b>	A, C



## Semi-Guard

Extra Coverage Half Apronette

Convenient hook & loop closure. 0.5mm Pb equivalency protection. Excellent protection for patient and staff.



**Default apronette color is Sapphire Blue, unless specified.**

size	(width x length)
S	(12" x 12")
M	(18" x 16")
L	(24" x 20")
X	(24" x 24")
2X	(36" x 24")
Half	(24" x 12")
Kids*	(8" x 10")

\*See Kids Lap-Guard p.16

## Lap-Guard

Buckle Closure Half Apronette

Unbeatable protection for patient and staff. Easy-to-use 1" buckle belt closure. 0.5mm Pb equivalency protection.



### Semi-Guard & Lap-Guard

SEMI cat. #	LAP cat. #	lead type	small	med/half	large	x-large	2X
SGR	LGR	Regular					
SGL	LGL	Light Wt.					
SGG	LGG	<b>LMG Lead-Free</b>					

### Semi-Guard Set & Lap-Guard Set

SEMI cat. #	LAP cat. #	lead type
STR	LTR	Regular
STL	LTL	Light Wt.
STG	LTG	<b>LMG Lead-Free</b>



**Semi-Guard & Lap-Guard SETS include a 2-Peg Rack and the following apronettes:**

small (yellow)	large (royal blue)
medium (berry)	extra-large (green)

## Pregnancy Semi & Lap-Guards

Half Apronette

Similar to Semi-Guard and Lap-Guard shown at the top of this page, but with 1.0mm Pb equivalency protection and a 2" belt on the Lap-Guard version. Excellent protection for pregnant patients requiring x-ray.

### 1.0mm PREGNANCY SEMI-GUARD & LAP-GUARD

SEMI cat. #	LAP cat. #	lead type	medium	large	x-large	2X
SPL	LPL	Light Wt.				
SPG	LPG	<b>LMG Lead-Free</b>				



### Demi-Guard

Half Apron

Child to Adult gonadal protection. 0.5mm Pb equivalency front protection. Available with 1" buckle closure or convenient Waist Ring.

#### WAIST RINGS

##### Demi-Guard with Waist Rings 0.5mm

cat. #	lead type	small	medium	large	x-large
DRR	Regular				
DRL	Light Wt.				
DRG	<b>LMG Lead-Free</b>				

##### Demi-Guard 0.5mm (Ring set of 4 sizes & rack)

cat. #	lead type	sizes	(width x length)
DSR	Regular	S	(8" x 10")
DSL	Light Wt.	M	(12" x 12")
DSG	<b>LMG Lead-Free</b>	L	(16" x 14")
		XL	(20" x 16")



#### BUCKLE CLOSURE

##### Demi-Guard with Buckles or Hook & Loop 0.5mm

Buckle cat. #	H&L cat. #	lead type	small	medium	large	x-large
DBR	DVR	Regular				
DBL	DVL	Light Wt.				
DBG	DVG	<b>LMG Lead-Free</b>				

##### Demi-Guard 0.5mm (Buckle or Hook & Loop set of 4 sizes & rack)

Buckle cat. #	H&L cat. #	lead type	sizes	(width x length)
DGR	DYR	Regular	S	(8" x 10")
DGL	DYL	Light Wt.	M	(12" x 12")
DGG	DYG	<b>LMG Lead-Free</b>	L	(16" x 14")
			XL	(20" x 16")



**ALSO AVAILABLE FOR ORDER!**





## Gonadal-Guard

### Adult Gonadal Shields

Attached belt with 1" buckle. 0.5mm Pb equivalency protection. Available in three sizes.



#### Gonadal-Guard (individual)

cat. #	lead type	small	medium	large
GNR	Regular			
GNL	Light Wt.			
GNG	<b>LMG Lead-Free</b>			

#### Gonadal-Guard (set of all 3)

cat. #	lead type	size	(width x length)
GSR	Regular	S	(4" x 4.5")
GSL	Light Wt.	M	(6" x 7")
GSG	<b>LMG Lead-Free</b>	L	(7.5" x 9")

## Gonadal-Guard

### Pediatric Gonadal Shields

Specifically designed sets will accommodate neonatal up to small children. Gender appropriate gonadal shielding. 0.5mm Pb equivalency protection.

#### Male (Blue/set of 4)

cat. #	lead type
GMR4	Regular
GML4	Light Wt.
GMG4	<b>LMG Lead-Free</b>



#### Female (Pink/set of 5)

cat. #	lead type
GFR5	Regular
GFL5	Light Wt.
GFG5	<b>LMG Lead-Free</b>



## Diaper-Guard

### Pediatric Protective Diaper

Specifically designed radiation protective diapers accommodate infants up to small children. Color-coded regular lead diapers: small (red), medium (green), large (yellow). 0.5mm Pb equivalency protection.

cat. #	back x length x front	size
GBR-S	9.5" x 11" x 5"	small
GBR-M	12.5" x 12" x 7.5"	medium
GBR-L	15.5" x 13" x 9"	large
GBS-3	set of all 3	set of 3



## Diaper-Guard/Brachytherapy

### Adult Protective Diaper

Specifically designed radiation protective diapers for adults. 0.5mm Pb equivalency protection. Convenient tie strings at each hip.

#GDR



## Kids Lap/Semi-Guard

### Half Apronette

With a width of 8" and a length of 10", this semi-guard is excellent protection for small patients. LAP uses 1" buckle closure and SEMI uses hook & loop. 0.5mm Pb equivalency protection.

#### Kids Lap/Semi-Guard

LAP cat. #	SEMI cat. #	lead type	child
LKR	SKR	Regular	
LKL	SKL	Light Wt.	
LKG	SKG	<b>LMG Lead-Free</b>	



See PGs 32-34 for different color and pattern options!

## Child-Guard

### Front Protection for Kids

#### EZ Fit, Front Protection

Ideal for our younger patients, creating safer and more secure protection than lead drapes or shields. Front protection apron with buckle closure. 0.5mm Pb equiv. front protection. **Shoulder Pads** concealed for comfort and durability!

Width x Length (18" x 24")

#### Child-Guard

cat. #	lead type	child
KGR	Regular	
KGL	Light Wt.	
KGG	<b>LMG Lead-Free</b>	

See PGs 32-34 for different color and pattern options!



## Kiddie Kovers

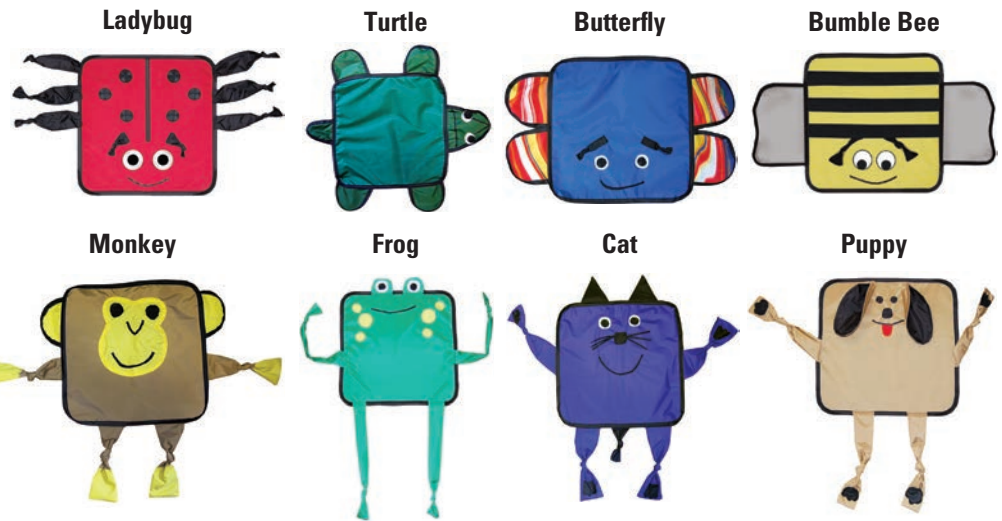
Kid-Friendly Protection

### What makes Kiddie Kovers Unique:

Decrease anxiety and fear with a "hug" from a friendly buddy. All purpose lead blanket protects children from radiation. Protective panel is 18" x 18" and safe for all modalities.

### 0.5mm Pb Equivalency

cat. #	description
KK-LBUG	Ladybug
KK-BBEE	Bumble Bee
KK-TURT	Turtle
KK-BFLY	Butterfly
KK-PUPP	Puppy
KK-FROG	Frog
KK-CATT	Cat
KK-MNKY	Monkey



### 0.375mm Pb Equivalenc

cat. #	description
KS-LBUG	Ladybug
KS-BBEE	Bumble Bee
KS-TURT	Turtle
KS-BFLY	Butterfly
KS-PUPP	Puppy
KS-FROG	Frog
KS-CATT	Cat
KS-MNKY	Monkey

## Omni-Guard

Protective Flexible Shield

Used over a patient or equipment, protects from radiation exposure. Used underneath a patient, prevents scatter radiation. All purpose covering for patients or equipment. 0.5mm Pb equivalency protection. Choose any color fabric.

**CUSTOM SIZES AVAILABLE!**

Size	(Width x Length)
S	(18" x 18")
M	(24" x 24")
L	(24" x 36")
X	(24" x 48")



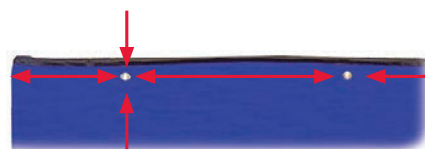
### 0.5mm Pb Equivalency

cat. #	lead type	small	medium	large	x-large
OMR	Regular				
OML	Light Wt.				
OMG	<b>LMG Lead-Free</b>				

### 0.375mm Pb Equivalency

cat. #	lead type	small	medium	large	x-large
OMSR	Regular				
OMSL	Light Wt.				
OMSG	<b>LMG Lead-Free</b>				

**NEW ADD GROMMETS:** if you would like to hang your Omni-Guard as a curtain, you can add grommets at the time of ordering. Let us know your desired location and the distance between grommets. Maximum width: 48". State on your Omni-Guard order: **Cat.#OM-GR** for up to five (5) grommets.



## Finger-Guard

Radiation reducing Finger-Guard offers extra sterile hand protection from secondary radiation. Available in three, lead-free options: PLF, PFC and PRL.

### PLF

Superior tactile sensitivity with excellent attenuation.



Lead-free/Powder-free/Latex-free

### PFC

Excellent tactile sensitivity with good attenuation



Lead-free/Latex-free

### PRL

Reasonable tactile sensitivity with the best attenuation



Lead-free/Powder-free/  
Contains Natural Latex/ Beaded cuff/  
Textured finger tips

cat. #	description	sizes	qty/pkg
PLF	.18mm Glove	6.5, 7, 7.5, 8, 8.5, 9	5 Pair
PFC	.23mm Glove	6.5, 7, 7.5, 8, 8.5, 9	5 Pair
PRL	.35mm Glove	6.5, 7, 7.5, 8, 8.5, 9	5 Pair

### Attenuation for Finger-Guard - Broad Beam

Description	Cat.#	60 KvP	80 KvP	100 KvP	120 KvP
.18mm Glove	PLF	56.5%	47.1%	41.6%	37.7%
.23mm Glove	PFC	48.0%	40.0%	32.0%	28.0%
.35mm Glove	PRL	60.0%	53.0%	46.0%	41.0%

## Palm Guard Radiation Protective Mittens

Full palm protection with thumb extension for grip. 0.5mm Pb equivalency dip molded core. Durable, soft vinyl covering. 15". Available with and without palm slit. Sold as a pair.



### Palm-Guard Slitted Mittens

cat. #	hand
PSP	Pair



### Palm-Guard Mittens (no slit)

cat. #	hand
PGP	Pair

## Hand Guard Radiation Protective Gloves

Five fingered protection for full dexterity. 0.5mm Pb equivalency dip molded core. Durable, soft navy vinyl covering. 15". Sold as a pair.



### Hand-Guard 5-Finger

cat. #	hand
HGP	Pair

## Belt-Guard

### Back Support Belt

Helps reduce back stress. Can be used with any apron. 6" elastic back support belt with 2" buckle closure. The same belt as used on the Ortho-Guard apron.

Regular #BGB      X-Large #BGB-2



## Guard-Tote

### Apparel Tote Bag

Convenient tote for all your protective wear. Durable rip-stop nylon fabric with zippered closure. 28" long to minimize folding your aprons. EZ-Carry handle and shoulder strap included. Default color for the Guard Tote is Anti-Microbial Black Onyx Diamond Ripstop but available in other colors at no additional charge.

#ACB-28

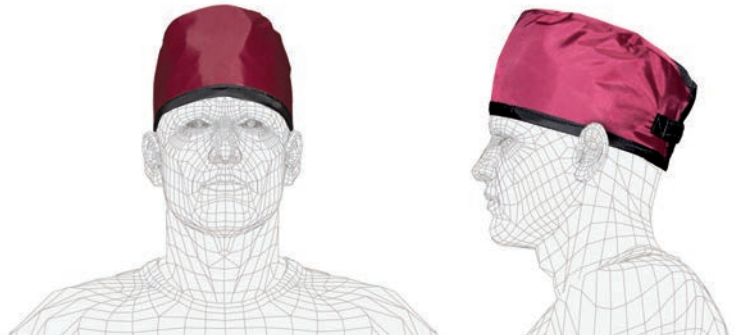


## Hat-Guard

Protection for the top of head. **Hook and Loop** fitted closure. 0.50mm Pb equiv. sides, 0.25mm Pb equiv. top.

Sizes Available: Small - 21", Medium - 22", Large - 23.5"

cat. #	lead type
HCL	Light Wt.
HCG	LMG Lead-Free



## Ultra-Guard

### Ultra-light and super stylish.

Curved lens adds to lateral protection. Regular hinges with wrap around frame. Universal bridge support. Available in most prescriptions. Includes premium case.

Lead Equiv.: 0.75mm lens.  
Weight: 67 grams.  
Frame: TR-90 Nylon.

Model#	Color	Prescription Options
LER-9SPL	Silver	Single Vision
LER-9KPL	Black	Bifocal
LER-9TPL	Taupe	
LER-9PPL	Pink	
Plano Lens		



## Avant-Guard

### Two-tone colorful Ultra-Guards.

Curved lens adds to lateral protection. Regular hinges with wrap around frame. Universal bridge support. Available in most prescriptions. Includes premium case.

Lead Equiv.: 0.75mm lens.  
Weight: 67 grams.  
Frame: TR-90 Nylon.

Model#	Color	Prescription Options
LER-ACPL	Carbon/Gray	Single Vision
LER-APPL	Purple/Gray	Bifocal
LER-AYPL	Yellow/Blue	
Plano Lens		



## NEW Elite Guard Wrap Around Glasses

Super Sleek curved lens provides all the great features of a High Quality Wrap Around Safety Frame. Techno-Aide Elite Guard-lightweight radiation protective glasses offer a stylish wrap-around style frame. Features rubberized soft grip temple bars for a secure fit. Rubberized soft grip nose pads. The Elite Guard fits best for Large size faces. Includes hard case, retainer cord and cleaning cloth

Lead Equiv.: 0.75mm lens.  
Weight: 58 grams.  
Frame: High-impact TR-90 nylon.

Model#	Color	Prescription Options
LER-EB-PL	Black	Single Vision
LER-ES-PL	Silver	Bifocal
Plano Lens		



### Predator-Guard

**Radiation protection and splash protection.**

Close fit provide excellent visibility. Extra soft nose pads for superior comfort. Wrapping lens area increases protection. For larger framed faces. Includes premium case.

Lead Equiv.: 0.75mm lens.	<b>Model#</b>	<b>Color</b>
Weight: 70 grams.	LER-DKPL	Black
Frame: TR-90 Nylon.	Plano Lens	(Prescription Lens NOT available)



### Turbo-Guard

**For that sharp and stream-lined look.**

Large lens area for excellent coverage. Rubberized temple bars for comfortable grip. Rubber, ultra-soft, fixed nose pad. Available in almost all prescriptions. Includes premium case.

Lead Equiv.: 0.75mm lens.	<b>Model#</b>	<b>Color</b>	<b>Prescription Options</b>
Weight: 65 grams.	LER-TRPL	Red	Single Vision
Frame: Impact resistant nylon.	LER-TKPL	Black	Bifocal
	LER-TSPL	Silver	
	Plano Lens		



### Sure-Guard

**Stylish design for medium faces.**

Large lens area for excellent coverage. Regular hinges with wrap around frame. Rubber, ultra-soft, fixed nose piece. Available in almost all prescriptions. Includes premium case.

Lead Equiv.: 0.75mm lens.	<b>Model#</b>	<b>Color</b>	<b>Prescription Options</b>
Weight: 63 grams.	LER-6SPL	Silver	Single Vision
Frame: TR-90 Nylon.	LER-6KPL	Black	Bifocal
	LER-6RPL	Red	
	LER-6BPL	Blue	
	Plano Lens		



## Wrap-Around

**The "original" with great side protection.**

Generous lens area increases protection. Spring hinges and adjustable nose. Available in most prescriptions. Includes premium case. Prescription lens available.

Lead Equiv.: 0.75mm lens.	<b>Model#</b>	<b>Color</b>
Frame: Impact resistant plastic.	LES-53PLT	Tortoise
	LES-53PLC	Crimson
	LES-53PLB	Blue
	Plano Lens	



## Viva-Guard

**Lively designs for small faces.**

Smaller frame for excellent fit of smaller faces. Regular hinges with wrap around frame. Ultra soft bridge support. Available in most prescriptions. Includes premium case.

Lead Equiv.: 0.75mm lens.	<b>Model#</b>	<b>Color</b>	<b>Prescription Options</b>
Weight: 60 grams.	LER-VFPL	Fancy Flight	Single Vision
Frame: Impact resistant polycarbonate.	LER-VVPL	Cherry Vines	
	LER-VSPL	Rad Skull	
	Plano Lens		



## Power-Guard

**Colortone accents increase comfort.**

Large lens area for excellent coverage. Soft colored endpiece for comfort and fit. Padded bridge, temples, and endpiece. Available in most prescriptions. Includes premium case.

Lead Equiv.: 0.75mm lens.	<b>Model#</b>	<b>Color</b>	<b>Prescription Options</b>
Weight: 64 grams.	LER-PBPL	Blue/Orange	Single Vision
Frame: Impact resistant polycarbonate.	LER-PSPL	Silver/Pink	Bifocal
	LER-PKPL	Black/Gray	
	Plano Lens		





### Astro-Guard

**Side Shield protection.**

Attractive and sturdy women’s frames. Flexible temples fit almost any face. Excellent visibility. Available in most prescriptions. Includes premium case.

Lead Equiv.: 0.75mm front and sides.	<b>Model#</b>	<b>Color</b>	<b>Prescription Options</b>
Weight: 66 grams.	LES-AFYK	Black/Yellow	Single Vision
Frame: Impact resistant plastic.	LES-AFPW	Purple/White	Bifocal
	LES-AFGP	Gray/Pink	
	LES-AFOP	Brown/Orange	
	Plano Lens		



### Secure-Guard

**Vented goggle for extreme protection.**

Adjustable headband keeps goggles securely on head and prevents slippage. Neoprene foam cushioning for facial comfort. Large lens pocket allows for maximum viewing area and vented to prevent fogging. Prescription lens available.

Lead Equiv.: 0.75mm lens.	<b>Model#</b>	<b>Color</b>
Weight: 66 grams.	LES-RKPL	Black
Frame: Impact resistant plastic.	Plano Lens	



### Cover-Guard

**Comfortable protection over regular glasses.**

Excellent front and side visibility. Provides limited splash protection. Can be worn over prescription eyewear. Regular hinges with molded nose piece. Includes 0.75mm Pb glass side shields. Includes premium case.

Lead Equiv.: 0.75mm front and sides.	<b>Model#</b>	<b>Color</b>
Weight: 85 grams.	LES-CKPL	Black
Frame: Black rubberized nylon.	LES-CWPL	White
	LES-CTPL	Tortoise
	Plano Lens	



## Mobile Apron Z-Rack

Z-Base mobile rack nests with others when not in use. Heavy duty casters on 12G steel base. Chromed-steel posts and hang bar. 60" long x 60" tall bar allows hanging without creasing. Ships @ 35 lbs.

Rack ONLY  
#ARM-ZNH

OR

Rack with  
Ten Hangers  
#ARM-Z10



## NEW Mobile Apron Z-Rack Middle Bar Add-On

Middle Bar addition to hang vests and skirts! 63" bar will hold up to 150 lbs. (Mobile apron z-rack sold separately)

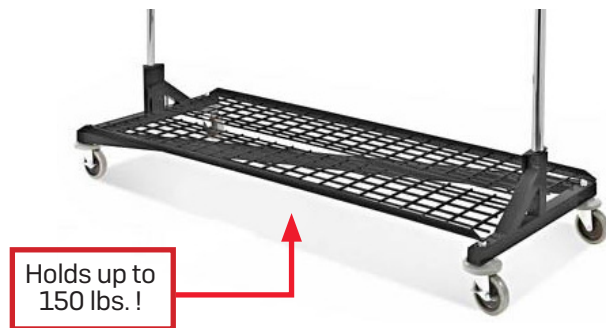
Bar Add-on  
#ARM-BAR



## NEW Mobile Apron Z-Rack Storage Base Add-On

Bottom shelf add-on for storing misc. protective accessories! 62" shelf will hold up to 150 lbs. (Mobile apron z-rack sold separately)

Shelf Add-on  
#ARM-BASE



## Apron Hangers

Designed for standard aprons, panoramic, vests, skirts, etc. Top hook swivels for easy hanging. 21" long chromed-steel with anti-slip tips. Glove holders mounted onto back panel. Use on ARM-ZNH rack, peg rack, etc. Single ships @ 2 lbs.

Single Hanger  
#ARH-01



Set of 10 Hangers  
#ARH-10



## Mobile Apron Rack

Ten (10) swing-arm mobile garment stand. Durable all-steel construction. 24" x 24" H-Base for stability and easy cleaning. E-Z-Roll swivel locking casters. Convenient handle for easy mobility. White enamel finish. Overall height is 55". Some assembly required. Ships @ 110 lb.

Standard Mobile Rack  
#ARM-100

Standard WITH Glove Rack  
#ARM-G60



E-Z Roll, 3" medical grade, swivel, locking casters!



Arms swing inward to conserve space!

Easy-Clean H-Base!



(Aprons sold separately)

## NEW 5 Arm Apron Rack

Five (5) swing-arm mobile garment stand. Durable all-steel construction with white enamel finish. 20" x 20" H-Base for stability and easy cleaning. E-Z roll swivel locking casters. Convenient handle for easy mobility. Arms extend to 29.5" outward. We offer the ability to choose whether you need right or left swing arms. Ships @ 80 lbs. motor freight.

#ARM-105



You choose the right or left side!



Arms swing inward to conserve space!

E-Z Roll, 3" medical grade, swivel, locking casters!

Easy-Clean H-Base!



(Aprons sold separately)

## NEW Multi-Tubular Apron Rack

The perfect solution safe apron storage. Durable all-steel construction. A 24" deep by 32" wide H-base offers stability and easy cleaning. Features E-Z Roll, 3" medical grade swivel locking casters. Convenient handle for easy mobility from room to room. White baked enamel finish. Overall height is 49" and width is 32". Rods are 27" long and spaced 4" apart for easy clearance and storage. Stores up to 5 aprons in tight spaces without crinkling or damaging aprons.

AVAILABLE IN MORE ENAMEL COLORS!

#ARM-500



E-Z Roll, 3" medical grade, swivel, locking casters!



Convenient handle for easy mobility and storage!

Easy-Clean H-Base!



Holds up to 5 Aprons at once!

(Aprons sold separately)

## NEW Mobile Combination Protection Rack

The ultimate option for serious radiation protection storage. This versatile rack holds 6 aprons, 3 pairs of gloves, and 6 pairs of radiation protection glasses. Comes with 6 heavy duty apron hangers for quick apron access. Durable all-steel construction. A 24" deep by 28 wide" H-base offers stability and easy cleaning. Features E-Z Roll, 3" medical grade swivel locking casters. White baked enamel finish. Overall height is 79", width is 30" and depth is 24". The perfect height to hang aprons avoiding damage from crinkling. Soft rubber rings and 6 high grade mounts create the ultimate protection for radiation glasses at all times.

#ARM-600



AVAILABLE IN MORE ENAMEL COLORS!



Holds up to 6 aprons, 3 pairs of gloves and 6 pairs of protective glasses at once!

## Wall Mounted Apron Racks

Ten or five swing-arm wall-mount apron racks. Mounting holes on 16" centers. All-steel durability with white enamel finish.



10-Arm #ARW-10



5-Arm, Swing Right #ARW-R5



5-Arm, Swing Left #ARW-L5

## Glove Adapter

Retrofits to Mobile Rack. Holds six (6) 18" gloves.

#ARG-06



## Apron/Glove Racks

Designed for one apron, but will hold more. All steel, heavy duty construction and a white finish. 16" & 24" holes match most wall studs. Glove holders mounted onto back panel. 28.5" long x 1.75" diameter bar prevents creasing.

**WITHOUT GLOVE HOLDERS**  
#AGR-105



**WITH TWO GLOVE HOLDERS**  
#AGR-110



**WITH FOUR GLOVE HOLDERS**  
#AGR-115



## Apron Peg Racks

Help extend the life of your aprons. Our apron racks are just the thing for you! 6" angled pegs keep garments from slipping. All-steel white enamel finish.

Custom  
Peg Racks  
May Be  
Available

2-Peg  
(for 1 apron)  
#ARP-02



4-peg  
(for 2 aprons)  
#ARP-04



6-peg and 8-peg racks: mounting holes on 16" and 24" centers.

6-peg  
(for 3 aprons)  
#ARP-06



8-peg  
(for 4 aprons)  
#ARP-08



16-peg  
(for 8 aprons)



20-peg  
(for 10 aprons)  
#ARP-20



## Matching the Apron to You

Techno-Aide Sizing Charts are based on averages. But let's face it... nobody is average! So, in order to get the Best Fit for You, please consider the following when measuring yourself for either a Standard or a Custom garment:

**PROTECTION IS PRIMARY:** Why are you wearing an apron? Protection from radiation! Some companies promise lighter weight garments, but their garments just don't measure up to proper specs. At Techno-Aide, we're much more concerned about your health and safety. Comfort is important, and while our garments are comfortable, comfort will always take a back seat to protection. Isn't that why you're purchasing Protective Apparel?

**CIRCUMFERENCE CONSIDERATIONS:** When measuring for a Front Protection Apron, measure from one side of the widest part of your body, around to the other side - the actual distance you want protected. Then, tell us if that measurement is your chest, tummy, or hips.

**HEIGHT CONSIDERATIONS:** In relation to your circumference, do you have a long or short torso? We want to make sure that you are adequately protected!

## Best-Fit Sizing Charts

### Front Protection Apron

Size	Front Width	Length	Chest Circumference
Petite	20"	32"	< 36"
Small	21"	34"	< 40"
Medium	22"	36"	< 44"
Large	24"	38"	< 48"
X-Large	26"	40"	< 52"
2X	28"	40"	< 56"
3X*	30"	40"	< 60"

### Skirt / Kilt

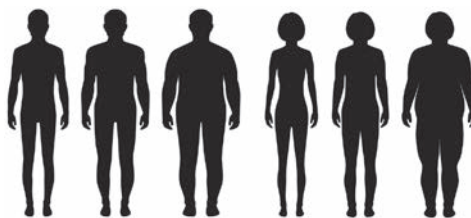
size	waist	hip	length
Petite	25"-27"	32"-34"	19"
Small	28"-29"	35"-36"	19"
Medium	30"-33"	37"-40"	20"
Large	34"-37"	41"-44"	21"
X-Large	38"-41"	45"-48"	22"
2X	42"-45"	49"-52"	22"
3X	46"-50"	53"-57"	22"

### Vest (male) & Full Wrap Around

Size	Chest/Tummy	Vest Length	Full Wrap Length
Petite	35"-36"	19.5"	32"
Small	37"-38"	20"	34"
Medium	39"-41"	21"	36"
Large	42"-44"	22"	38"
X-Large	45"-49"	23"	40"
2X	50"-54"	24"	40"
3X*	55"-59"	24"	40"

### Vest (female)

Size	Bust	Waist	Hip	Length
Petite	33"-34"	< 31"	35"-36"	19"
Small	35"-36"	< 33"	37"-38"	19.5"
Medium	37"-38"	< 35"	39"-40"	20"
Large	39"-41"	< 39"	41"-43"	21"
X-Large	42"-44"	< 41"	44"-46"	22"
2X	45"-49"	< 46"	47"-51"	23"
3X*	50"-54"	< 51"	52"-56"	23"



Sizes shown for apparel other than Front Protection are actual body measurements. All lengths are from the sternal notch or waist downward, depending on the garment.

## Custom Sized Apparel

All custom sized apparel will include an additional fee for each item ordered. Please use the provided CAT numbers and pricing if you need a custom apparel item. Custom sized apparel is non-refundable.

**ACP** - \$125 fee for custom Aprons, Vests & Skirts

**ACP2** - \$45 fee for other custom apparel items (ex: thyroid guards, gonadal guards)

\*3X is the maximum size for standard (listed) pricing. All sizes exceeding 3X will be considered custom products. Additional fees apply.



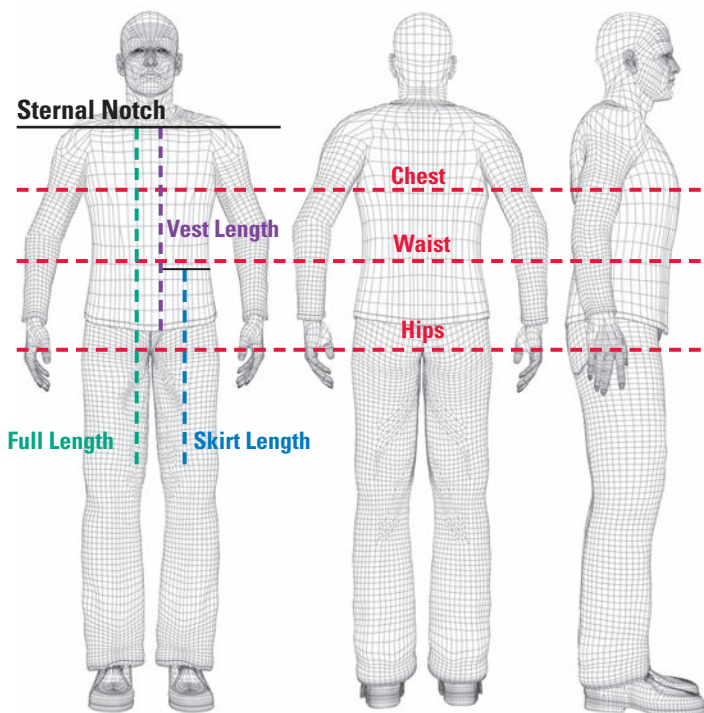
## Getting the Best-Fit

If you don't think that our standard sized garments will fit you properly, we are pleased to offer you the chance to create your own size, to fit your specific body measurements. Just complete the form below and we will create your customized protective wear. Please note, that due to the nature of customized apparel, these garments cannot be returned. Please be accurate. Thanks!

NAME \_\_\_\_\_ FACILITY \_\_\_\_\_  
 ADDRESS 1 \_\_\_\_\_ ADDRESS 2 \_\_\_\_\_  
 CITY \_\_\_\_\_ STATE \_\_\_\_\_ ZIP \_\_\_\_\_  
 DAYTIME PHONE \_\_\_\_\_ EMAIL \_\_\_\_\_

APRON CAT.# \_\_\_\_\_ DESCRIPTION \_\_\_\_\_ LEAD TYPE \_\_\_\_\_  
 FABRIC (pg 34-35) \_\_\_\_\_ BINDING COLOR (pg 33) \_\_\_\_\_  
 EMBROIDERY (OPTIONAL) LINE 1, UP TO 24-LETTERS (FREE) \_\_\_\_\_  
 EMBROIDERY LINE 2, UP TO 24-LETTERS (extra charge) \_\_\_\_\_  
 EMBROIDERY THREAD COLOR (pg33) \_\_\_\_\_ LETTER STYLE (pg32) \_\_\_\_\_  
 ADD ATTACHED THYROID COLLAR? YES NO CAT.# \_\_\_\_\_ (COLOR WILL MATCH APRON)

## Getting Accurate Measurements (all in inches)



**GENDER:** \_\_\_\_\_

**HEIGHT:** \_\_\_\_\_

**BUST/CHEST:** \_\_\_\_\_  
 Circumference around the widest part of your chest.

**SIDE-to-SIDE:** \_\_\_\_\_  
 The widest part of your body that you want covered by a Front Protection Apron. Please specify the this area (circle): chest / tummy / hips

**WAIST:** \_\_\_\_\_  
 Standard Apron: measure your waistline.  
 Skirt/Kilt: measure where you want the skirt/kilt top (may be higher than your regular waistline).

**HIP:** \_\_\_\_\_  
 Circumference around the widest part of your hips.

**LENGTH:** \_\_\_\_\_  
 FRONT APRON or WRAP-AROUND: \_\_\_\_\_  
 Sternal notch to just above the knee.

**VEST/TORSO:** \_\_\_\_\_  
 Sternal Notch to desired length below your waist.

**SKIRT/KILT:** \_\_\_\_\_  
 Desired skirt/kilt top (may be above your regular waistline) to just above your knee.

Please photocopy this page to submit your order.

## Protection Options

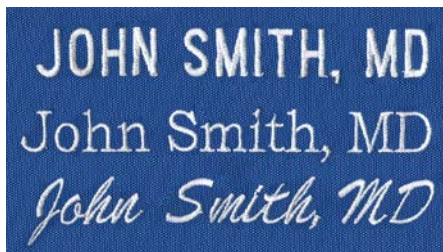
What to know when comparing protective apparel.

MEDIA	BENEFITS	PROTECTION	ATTENUATION	WEIGHT
Regular Lead	Most economical and recyclable	100% Lead	0.5mm Pb Equiv. Protection avg. 97% attenuation over 80, 100, 120 KVP	9 - lbs. (based on medium front protection apron)
Lightweight Lead	Lighter than regular lead and recyclable	Lead-Tin	0.5mm Pb Equiv. Protection avg. 96.8% attenuation over 80, 100, 120 KVP	8 - lbs. (based on medium front protection apron)
"LMG"*	Lightest Weight, Lead-Free, Environmentally Friendly	Tungsten-Antimony	0.5mm Pb Equiv. Protection avg. 96.6% attenuation over 80, 100, 120 KVP	7 - lbs. (based on medium front protection apron)

## FREE Embroidery Sewn-In

Selected garments come with the first line (up to 24 letters) of embroidery free! Add flexibility with an embroidered patch. Please specify what you want embroidered and which type style you prefer (see below). Embroidered items are non-returnable, non-refundable.

### Available Styles



**All Caps** (default)

**Block**

**Script**

Additional lines, up to 24 letters = extra charge

## Embroidery Add-On Patch

This flexible option has your information embroidered onto a patch. Hook & Loop on the back of the patch and on the garment secure the patch in place.

#EMP (Patch) extra charge



(Patch above pocket)



(Hook and loop closure)

## FREE Shoulder Strap

Simply ask for it with your order. Hook & loop Strap is attached to one shoulder and reaches across to the other.



Helps keep shoulders high and comfortable.

## Accent Colors

Embroidery Colors

*White* (default)

*Black* (default)

*Lt. Gray*

*Charcoal*

*Royal Blue*

*Red*

*Yellow*

*Orange*

*Tan*

*Brown*

Binding Colors

**Black** (default)

**Light Gray** (default)

**Navy**

**Royal Blue**

**Red**

**Yellow**

**Orange**

**Tan**

**Pink**

**Purple**

**Green**

**Burgundy**

# NEW ANTI-MICROBIAL FABRIC

Inhibits the growth of bacteria and other microorganisms on the fabric surface



61-Sapphire

## NEW DEFAULT FABRIC 61-Sapphire



N911-Stratos



N921-Ocean



N933-Midnight



64-Onyx



65-Amethyst

## NATURA Smooth, Soft, Flexible with a Natural Feel



N911-Stratos



N921-Ocean



N933-Midnight

## DIAMOND RIPSTOP FABRIC Medium Weight Nylon, Filament Reinforced Fabric



61-Sapphire



62-Ruby



63-Emerald



64-Onyx



65-Amethyst

Prints are shown SMALLER than actual size

## FEATHER RIPSTOP FABRIC Light Weight Nylon, Filament Reinforced Fabric



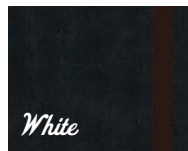
R701-Royal Blue



R702-Red



R703-Forest



R704-Black



R705-Chocolate



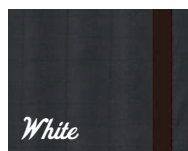
R706-Navy



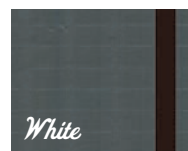
R707-Burgundy



R708-Kelly



R709-Charcoal



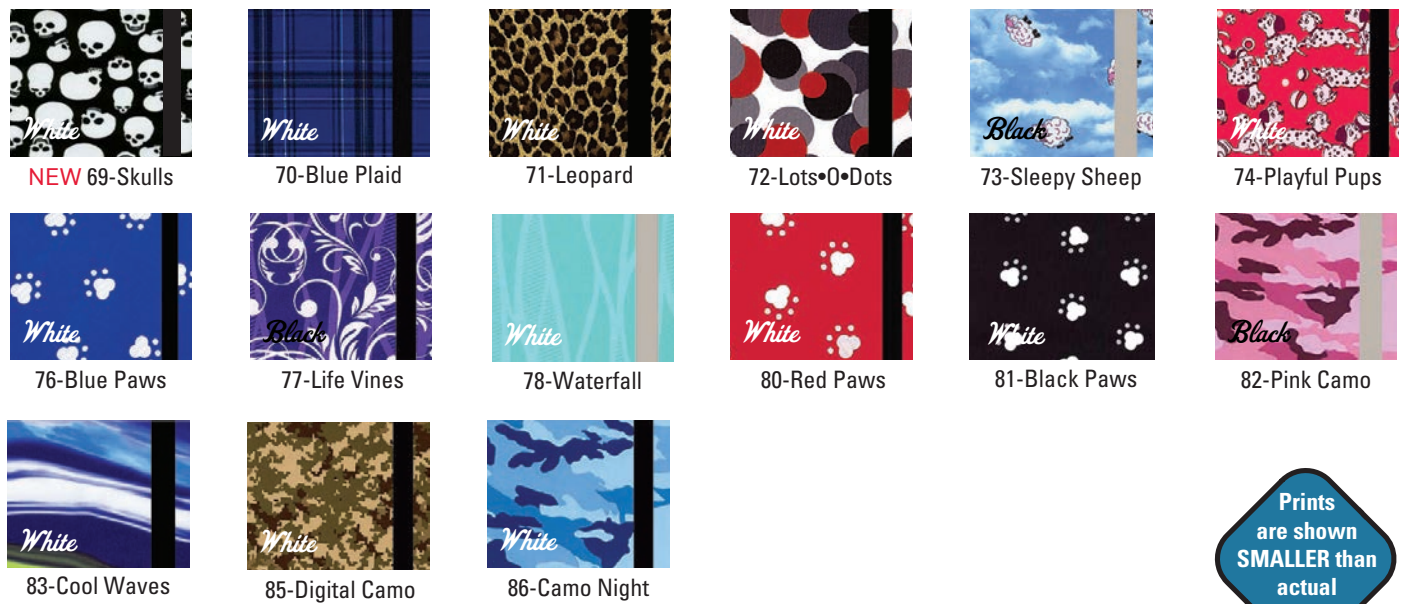
R710-Gray

Colors and patterns may be added or discontinued at any time. Please visit us at [www.Techno-Aide.com](http://www.Techno-Aide.com) for the most up to date fabric options.

**NYLON SOLIDS** Liquid Repellent, Light & Supple



**COLORFUL PRINTS** Liquid Repellent, Medium Weight



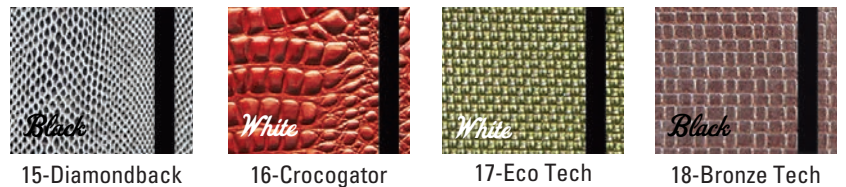
Prints are shown SMALLER than actual size

Liquid Proof Polyurethane Laminate Fabrics

**DISCONTINUED**

94-Big Dipper	95-Andromeda
---------------	--------------

**Textured High Tech Fabrics**

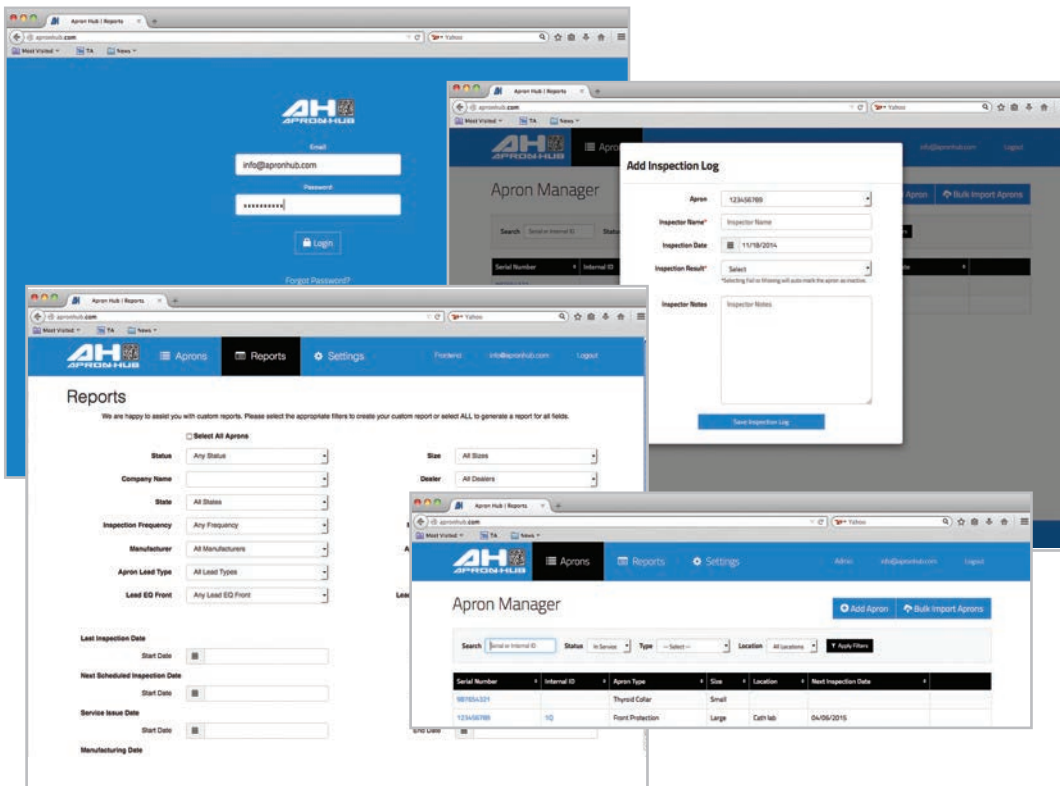




**FREE** Protective Apparel Tracking and Inventory System!

## Exclusive from Techno-Aide!

All new Techno-Aide garments include a scanable QR code for automatic tracking. Upload garment data into your unique ApronHub portal for permanent inventory management. Receive alerts for inspection dates through a customizable format. Retrofit QR code tags onto your existing Techno-Aide or non-Techno-Aide garments. Track inspection history, location, user, etc., through a customizable reports menu. 2D Scanners are available through Techno-Aide or you can use your own 2D-scanner. ApronHub has everything you need to quickly and easily meet the highest QA standards. For more information visit [www.apronhub.com](http://www.apronhub.com) today!





## Accessories

### Tools for Scanning and Labeling Protective Apparel

Stay one step ahead of the inspectors and enhance your QA! All new garments manufactured by Techno-Aide include a scannable QR Code Serial Number label for automated or manual tracking. However, we realize that you may have older, unlabeled garments or garments from another manufacturer. To update all your protective garments, we have designed this retrofit labeling kit so that your garments can be tracked utilizing the most up-to-date tracking technology available.

CAT #	Description
AHSCB	2D Scanner with Cable
AHSXW	2D Scanner Wireless
AHETL	Eyelet Tool
AHES50	Silver Eyelets (50)
AHQRC	QR Code Retrofit Labels (100)
AHDT18	Date Tags: 2018 (50)
AHDT19	Date Tags: 2019 (50)

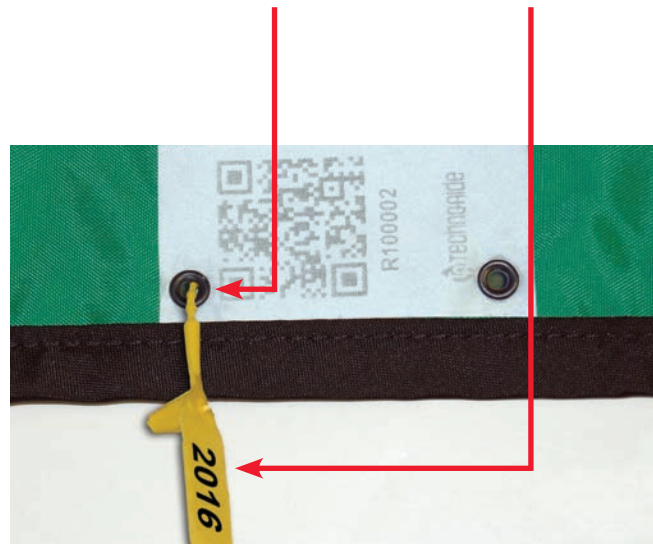
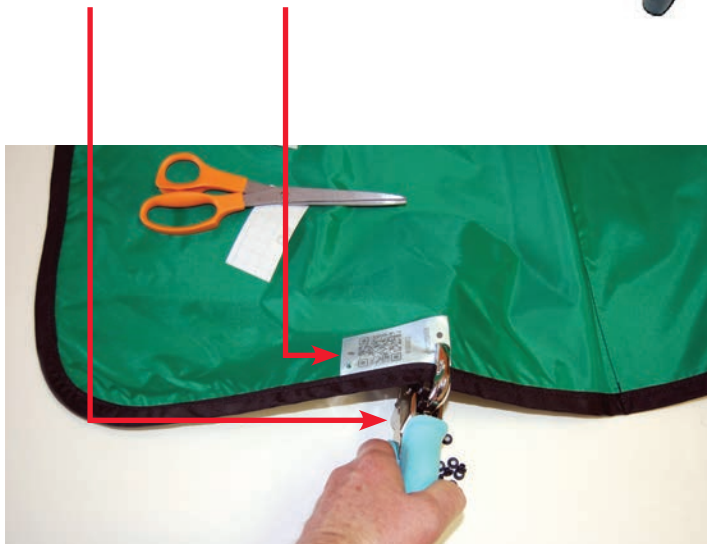
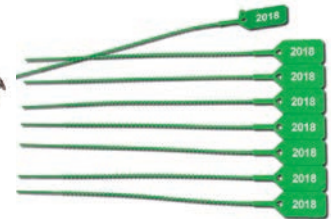
#AHETL

#AHQRC

#AHSCB/AHSXW

#AHES50

#AHDT18/AHDT19





ADMINISTRATION/MANUFACTURING

7117 Centennial Blvd. Nashville, TN 37209

Orders can be placed online or sent to [orders@techno-aide.com](mailto:orders@techno-aide.com)

For official Quotes: [quotes@techno-aide.com](mailto:quotes@techno-aide.com)

Any questions can be directed to [customerservice@techno-aide.com](mailto:customerservice@techno-aide.com)

P: 800.251.2629 or 615.350.7030

F: 800.554.6275 or 615.350.7879

[techno-aide.com](http://techno-aide.com)