



Ultrasound

2019
PRODUCT
GUIDE

Aquasonic Clear®

Same as Aquasonic® 100, but with no fragrance or color

Aquasonic 100 ultrasound transmission gel now has partner in Aquasonic Clear. From Parker Laboratories, the world leader in ultrasound products. Aquasonic Clear is made from the purest water with absolutely no perfumes or dyes. As with Aquasonic 100, Aquasonic Clear is hypoallergenic and will consistently provide superior ultrasound transmission. Choose Aquasonic Clear—the benefits are visible!



cat. #	size per unit	units/box
USC-025	250ml bottle	12
USC-100	1 liter bottle	6
USC-500	5 liter jug w/bottle	1

FEATURES:

- No Fragrance or color
- Water Soluble
- Hypoallergenic
- Bacteriostatic
- Non-irritating
- No Formaldehyde
- Not a spermicide
- Acoustically correct

Aquasonic® 100

Industry standard ultrasound transmission gel

Recommended for all procedures where a viscous gel is required. Acoustically correct for the broad range of frequencies used. Aqueous formula will not stain clothing or damage transducers. Hypoallergenic, bacteriostatic, non-sensitizing, non-irritating.

cat. #	size per unit	units/box
USO-025	250ml bottle	12
USO-100	1 liter bottle	6
USO-500	5 liter jug w/bottle	1
USO-048	20g sterile pouch	48
USO-030	Non sterile pouch	100



Ultrasound Probe Covers

Acoustically transparent, minimizing distortion during scanning. Available in Latex or Latex-Free and Sterile or Non-Sterile. A variety of style and sizes for many applications and specialties: Radiology, Vascular, Cardiology, Urology, Phlebology, Emergency Medicine, OB/GYN, etc.

cat. #	description	dia. x length	qty/case
LATEX PROBE COVERS, NON-STERILE			
USP-LN01CS	condom size, bulk pack	1.25" x 8"	1200
USP-LN03CS	condom size, individually wrapped	1.25" x 8"	1200
USP-LN04CS	extra-long, bulk	1.18" x 11.8"	600
LATEX-FREE PROBE COVERS, NON-STERILE			
USP-FN03CS	rolled, individually wrapped	1" x 9"	600
USP-FN04CS	extra long, individually wrapped	1" x 12"	600
LATEX-FREE PROBE COVERS, STERILE			
USP-FS01CS	semi-rolled and tapered, bulk pack	1" d x 9"	300
USP-FS02CS	semi-rolled, wide abdominal	3.5" flat x 12"	75

Now sold by the CASE!



Ultrasound Gel Warmers

Fits standard 250ml gel bottles

Steel Gel Warmers

“Uni-Sleeve” heating element adjusts up to 122°F. Illuminated On/Off switch with hospital grade cord. Stainless Steel with white powder coat finish. 5”w/8”w/11”w x 6”d x 5”h. Fits standard 250ml gel bottles.

cat. #	rating	capacity
UGW-U01	UL/CSA approved	1
UGW-U02	UL/CSA approved	2
UGW-U03	UL/CSA approved	3
UGW-U04	UL/CSA approved	4



Composite Gel Warmers

Maintains constant temperature. Impact-resistant composite housing. Hospital grade power cord. Three Bottle Unit ONLY:
 - Illuminated On/Off switch. - Energy-saving lid. - 3-position thermostat (UGP-UL3): Low: 97°F / Medium: 102°F / High: 109°F.
 - Digital display thermostat (UGP-ULD): 1° increments from 97°F to 109°F. Single bottle unit is factory set at 104°F with a heat indicator lamp.

cat. #	rating	capacity
UGP-UL1	UL/CSA approved	1
UGP-UL3	UL/CSA approved	3
UGP-ULD	UL/CSA approved	3



Counter Top or Wall Mountable

Empty Dispenser Bottles

Standard 250ml bottles can be used for ready refills or as a back-up supply when filled from a larger container. Comes with a black tip cap and can be used in ultrasound gel warmers.

#USB-012
dozen



SANI-CLOTH® AF3 Alcohol-Free Wipes

Contains an excellent range of effectiveness. Cleans, disinfects, deodorizes & fragrance-free. Alcohol content: ALCOHOL-FREE (less than 0.016%). Recommended Contact Time: 3-minutes or less. Commonly used for **MAMMOGRAPHY, ULTRASOUND and most other IMAGING EQUIPMENT.** PLUS daily use items like table pads, sandbags, coated sponges, transfer boards, aprons, shields, vinyl straps... you name it. Meets CDC, OSHA and CMS Tag F441 guidelines.

cat.#	wipe size	quantity
GWP-WAF	6" x 6 ¾"	tub of 160 wipes
GWP-WAFCS	6" x 6 ¾"	case of 12 tubs



SANI-CLOTH® BLEACH Wipes

Ideal for disinfecting high risk areas endemic with Multidrug-Resistant Organisms, Clostridium difficile spores, Norovirus, MRSA, and 50 other pathogenic microorganisms. Recommended Contact Time: 4-minutes. Compatible with a wide range of surfaces and equipment. Meets CDC, OSHA and CMS Tag F441 guidelines with a 1:10 bleach dilution.

cat.#	wipe size	quantity
GWP-B12CS	6" x 10 ½"	12 tubs of 75 wipes
GWP-BB14CS	7 ½" x 15"	6 tubs of 65 wipes



EASY SCREEN™ Cleaning Wipes

Touch-Screen cleaner that "works at the speed of technology." Rapidly cleans dirt, grime, fingerprints and smudges from healthcare equipment. Helps prevent cross-contamination with a 70% isopropyl alcohol (IPA) solution. Commonly used for **Touch-Screens, Tablets, Lighting, and most other imaging equipment.** Effectively treats acrylic, polycarbonate, glass, stainless steel, and more.

#GWP-ESW
(12 tubs of 70 wipes)



True Wipes

A new standard for Lint-Free Wipes

Having passed the USP-797 clean environment testing, True-Wipes are ideal for lint-free cleaning of ultrasound equipment and general work surfaces. These highly absorbent 9" x 9" lint-free wipes can be used with screen cleaner, alcohol, bleach, and peroxide to clean and disinfect. Wipes are packaged in a resealable double bag to avoid contamination from typical box dispensers. Reinforces your vital QA standards.

#TW-200
(200 total wipes)



Blanket Warmer Cabinets

Designed for radiology departments, interventional suites, ER and OR, mammography, ultrasound, CT outpatient clinics and surgery centers. These stainless steel blanket warmers are adjustable from 98° to 180°F (37° to 82°C) with the help of an intelligent 4-digit LED controller. With no moving parts and an audio-visual temperature alarm, these heavy duty units are designed for safety and built to last. All three units come with hospital grade power cords. The two largest units include locking casters. Operational at either 120VAC or 220VAC. All units are UL & CSA approved.

COUNTERTOP UNIT

Holds 7 bed sized blankets.
16" x 24" x 20"
70 lbs.

#BW-210

SHORT CABINET

Holds 25 bed sized blankets.
22" x 29" x 40"
170 lbs.

#BW-710

TALL CABINET

Holds 50 bed sized blankets.
22" x 29" x 70"
350 lbs.

#BW-1400



Anti-Fatigue Floor Mat for Sonographers

Provides comfort for standing during long exams. Blown vinyl-nitrile sponge base provides superior cushioning, while a solid vinyl-nitrile surface provides sure-footed protection from wear and tear. This 2' x 3' x 1/2" black mat comes with a 1-year warranty.

#TM-51323



PORTABLE,
DURABLE AND
DECREASES
FATIGUE!



Elemental Ultrasound Stool

Sit in comfort during extended ultrasound procedures. Back height adjustment. Tilting backrest. Pivot backrest. Tilting seat. Comes with a 7-year limited warranty. Ships at 68lb (actual wt. 46lb).

cat. #
ZOES-MX03

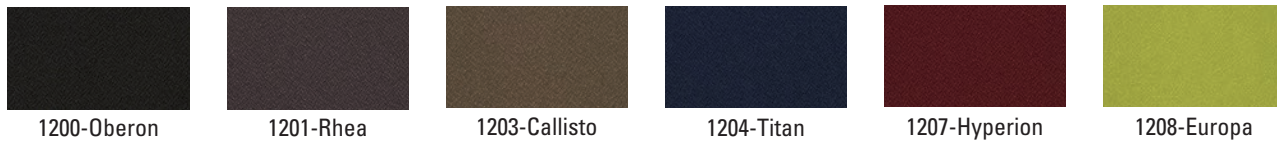
Product Dimensions

Seat: 19" w x 19" d
 Back: 19" w x 17.5" h
 Seat height range: 23" - 33"
 Overall height: 42" x 55" x 20" (with chrome footring)

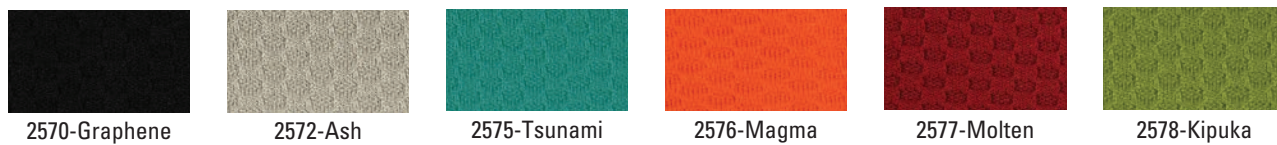


Available in these color options!

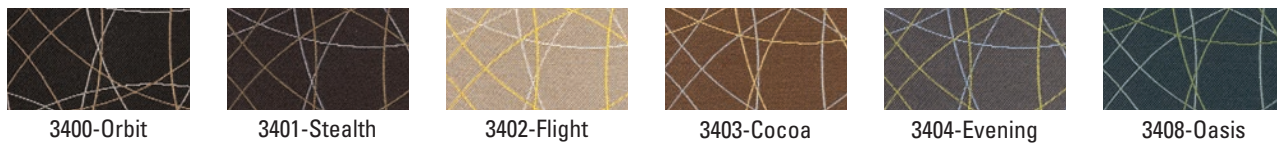
POLYESTER **Celestial**



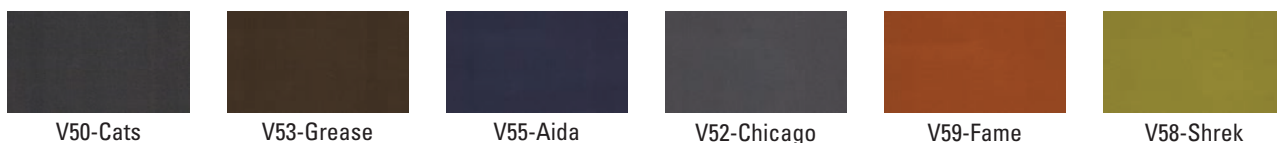
POLYESTER **Soft Sit**



POLYESTER **Freedom**



VINYL **Stage**



Capisco HAG Ergo Ultrasound Saddle Chair for Sonographers

Optimize ergonomic safety while scanning patients. This Ergonomic Chair allows sonographers to bend, stretch, and move freely in the ultrasound suite between the exam table and ultrasound machine and still optimize postural alignment. Provides excellent support to reduce the stress of repetitive motion while ultrasound scanning. It reduces fatigue providing support for a long reach at any angle while allowing the sonographer to sit forward, sideways, or backwards. Includes foot ring support for additional bracing and positioning. Allows variation of position, movement, and posture.

cat. #
ZERG-HAG



Available in these color options!



NEW Ultrasound Exam Weight Bearing Step Platform

Techno-Aide's Ultrasound Exam Step Platform permits efficient and accurate exams of the upper and lower leg during venous insufficiency studies and Doppler exams. The patient is placed in an optimal position for easy ergonomic scanning by the ultrasonographer promoting a better scanning environment. Designed for patients up to 350 lbs. Easy to store and move with medical grade casters. Easy to keep clean. Platform is made from stainless steel.

WMS-20

Overall	Top Step	Bottom Step
54.5" tall	8" tall	9" tall
26" long	16" deep	10" deep
20" wide	19" wide	19" wide

WMS-10

Overall	Top Step	Bottom Step
54.5" tall	8" tall	7" tall
28" long	11" deep	15" deep
15.5" wide	15.5" wide	15.5" wide



Vinyl-Covered Bolster Blocks

Reusable blocks, bolsters, and wedges are manufactured from firm, high-density urethane foam. Royal Blue outer covering is durable, heavy gauge, reinforced vinyl. Seams are sewn and tear resistant. Easy to clean Bolsters are RADIOLUCENT. Seams may show. Provides excellent support for a wide variety of imaging needs.



#YVFJ
Block
8" x 12" x 3"



#YVFB
Semi-Round
8" x 18" x 6"



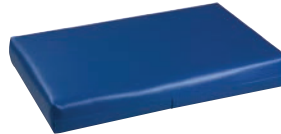
#YVFG
Block
8" x 12" x 6"



#YVFP
Block
18" x 24" x 4"
\$227.00



#YVFK
Block
20" x 13" x 3"



#YVFI
Block
24" x 15" x 3"



#YVFO
DEXA Block
20" x 20" x 12"



#YVFM **KNEE BOLSTER**
16" x 25" x 8.25"



#YVFZ **ENDO ULTRASOUND WEDGE**
20" x 23" x 6"



Custom shape and size combinations available.
Call today for a quote!

Vinyl-Covered Bolsters Wedges

Reusable blocks, bolsters, and wedges are manufactured from firm, high-density urethane foam. Royal Blue outer covering is durable, heavy gauge, reinforced vinyl. Seams are sewn and tear resistant. Easy to clean Bolsters are RADIOLUCENT. Seams may show. Provides excellent support for a wide variety of imaging needs.

Dimensions listed as W x L x H

#YVFU
30°/ 60°/ 90°
Wedge
10" x 24" x 6"



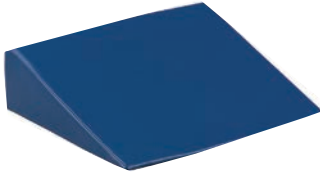
#YVFO
45° Wedge
7" x 21" x 7"



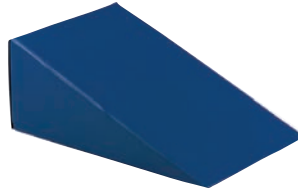
#YVFD
45° Wedge
8" x 16" x 8"



#YVFC
20° Wedge
24" x 18" x 6"



#YVFE
20° Wedge
20" x 32" x 12"



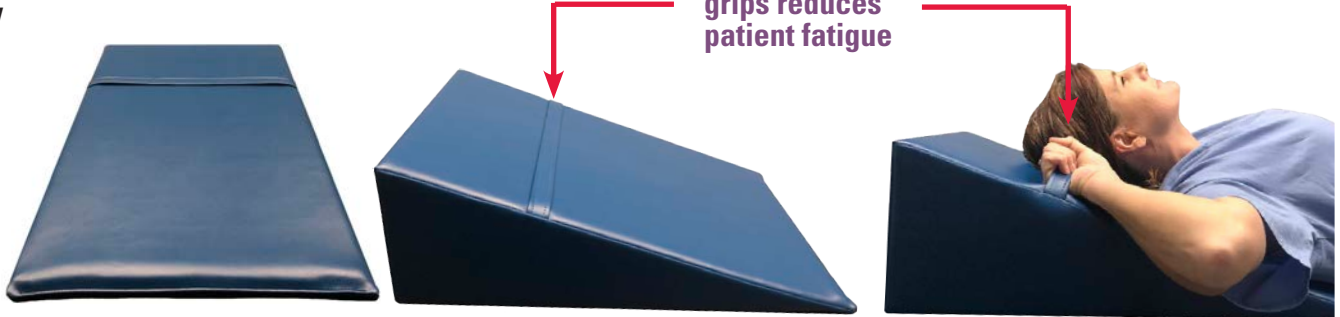
#YVF40
26° Wedge/Knee
13" x 17" x 6"



Body Comfort Wedge Pillow

High density foam enclosed in a durable, heavy gauge, reinforced Royal Blue vinyl covering. Supports patient's head and shoulders when arms must be held above head. Dual hand grips reduce patient fatigue. 16" x 25" x 8.25"

#YVfV



Bolster Kits

Reusable blocks, bolsters, and wedges are manufactured from firm, high-density urethane foam. Royal Blue outer covering is durable, heavy gauge, reinforced vinyl. Seams are sewn and tear resistant. Easy to clean Bolsters are RADIOLUCENT. Seams may show. Provides excellent support for a wide variety of imaging needs.

Dimensions listed as W x L x H

#YSU2
KIT Includes:
 (2) YVFG, YVFJ



#YSU1
KIT Includes:
 YVFB, (2) YVFG, YVFJ



#YSU3
KIT Includes:
 YVFB, YVFD, YVFG



#YSU5
KIT Includes:
 YVFB, YVFC, YVFD, YVFJ, YVFO



#YSU6
KIT Includes:
 YVFJ, YVFK, YVFO, YVFM

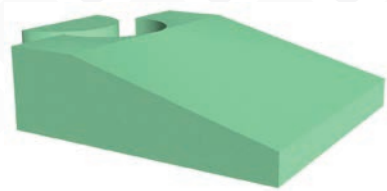


#YSU4
KIT Includes:
 YVFA, YVFB, YVFC, YVFD, YVFG, YVFH, YVFJ, YVFK



Ultrasound positioning aides

Overall dimensions: Width x Length x Height. May be larger than traditional style.



COATED

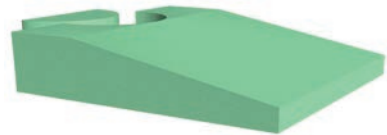
NON-COATED

#YCUZ

#YBUZ

ENDO-ULTRASOUND WEDGE

20 x 20 x 6



#YCEQ

#YFEQ

PERINEAL WEDGE

20 x 20 x 3



#YCAJ

#YFAJ

ANGULAR BOLSTER

14 x 22.5 x 7.25

Non-Stealth Traditional Bariatric Wedges

COATED

NON-COATED



#YCCG

#YFCG

45° BARIATRIC WEDGE

9 x 30 x 9



#YCHB

#YFHB

BARIATRIC SPINAL WEDGE

7 x 24 x 7



#YCFD

#YFFD

45° SPINAL WEDGE

7 x 21 x 7



#YCAJ

#YFAJ

KNEE WEDGE SUPPORT

22 x 20 x 7

Coated-Only Specialty Sponge Kits

ULTRASOUND SPECIALTY BREAST OR PARACENTESIS

#YSU8



YCBG - 21° Wedge
 YCFD - 45° Spinal Wedge
 YCBU - 30°-60°-90° Multi-Angle Wedge

GENERAL / PERINEAL KIT

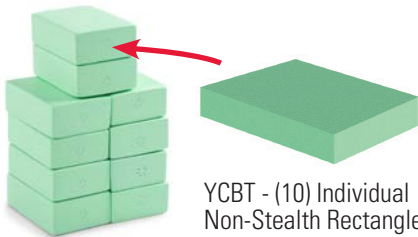
#YSRD



YCAY - Angular Bolster
 YCEE - 45° Echocardiography Wedge
 YCUZ - Echo-Ultrasound Wedge

ULTRASONOGRAPHER SCANNING KIT 3

#YSRC



YCBT - (10) Individual Non-Stealth Rectangles



Ultrasound Biopsy Stretcher Chair

Ideal for use as a procedural chair or treatment table. The chair's versatility allows it to be used for pre-induction, transport, treatment, and recovery. Easy controls from either side of the chair allow height adjustment for optimal patient positioning. Seat height ranges from 23.5" to 31.5". Premium 5" Tente casters make for easy maneuvering. Backrest and leg section adjust from 90° upright to full spine, and 10° Trendelenburg. Features fold-down handrails and 3" comfort mattress. Weight capacity: 325 lbs.

#CRH-MBC
 (Call for Price)





ADMINISTRATION/MANUFACTURING

7117 Centennial Blvd. Nashville, TN 37209

Orders can be placed online or sent to orders@techno-aide.com

For official Quotes: quotes@techno-aide.com

Any questions can be directed to customerservice@techno-aide.com

P: 800.251.2629 or 615.350.7030

F: 800.554.6275 or 615.350.7879

techno-aide.com