



# Veterinary

2019  
PRODUCT  
GUIDE

## CHECK OUT WHAT'S NEW FOR 2019

2019 will be another year of innovation for Techno-Aide. Providing a safer working environment is our top priority. You will see an assortment of new products and some incredible upgrades to our existing line designed to make your job easier and safer.

This year Techno-Aide once again leads the way in innovation and protection by introducing our new veterinary immobilizers, all new mobile apron racks, new 0.375mm protection and our infection-resistant anti-microbial fabric. With hundreds of options available today, Techno-Aide makes the choice easy and affordable without sacrificing patient's or technologists health.

Techno-Aide is also excited to offer our new White Glove Delivery service for mobile x-ray barriers. This service makes delivery and setup easier than ever. Simply select your desired barrier and we will take care of the rest. Need the product in a tight space or in a specific room? No problem! The delivery team will unpack and assemble your purchase, getting you up and running faster than ever.

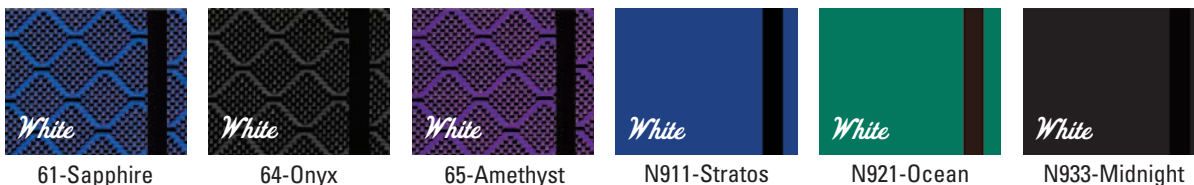
This catalog will showcase our most popular accessory options.

### NEW Features and Products for 2019

- Veterinary Troph Immobilizers
- Veterinary Ultrasound Immobilizer
- All new protection bundle kits
- Lightweight 0.375mm protection
- New default Anti-Microbial fabrics
- Veterinary vinyl covered immobilizers
- Floor mounting kit for mobile barriers
- New compact mobile apron racks
- White Glove Delivery Service
- Updated badge boards

### NEW Anti-Microbial Fabrics

Inhibits the growth of bacteria and other microorganisms on the fabric surface

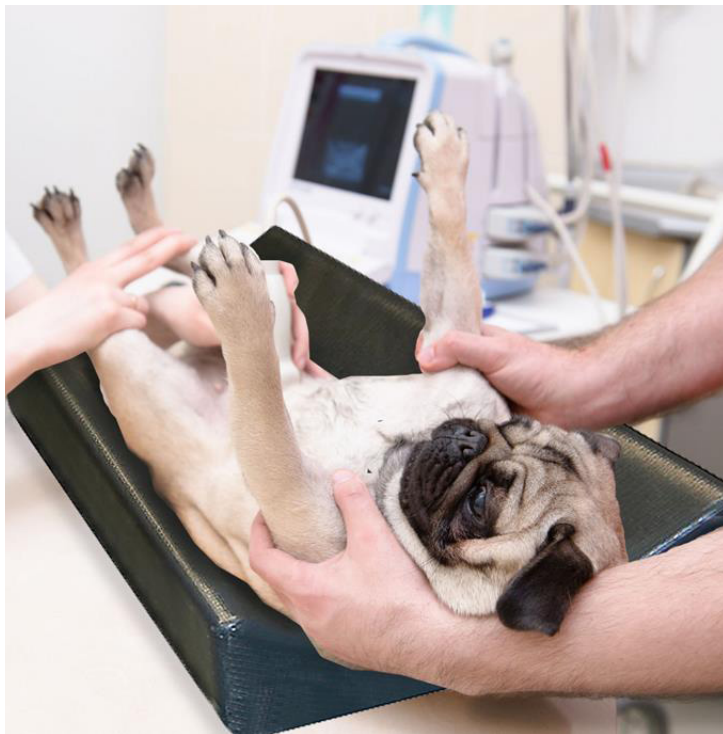
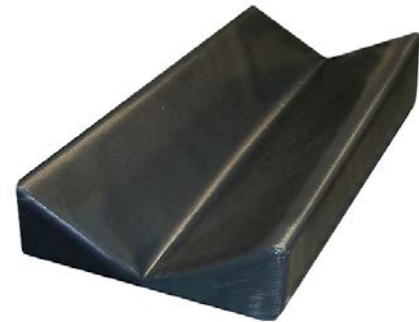
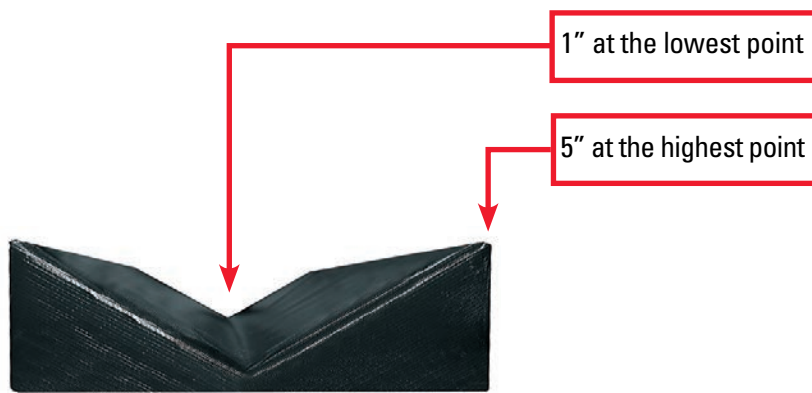


**Default**

## NEW Veterinary Ultrasound Immobilizer

Our NEW Vinyl Covered Positioning device provides excellent stability during ultrasound positioning. This reusable positioner is manufactured from a firm high density urethane foam and is covered in heavy gauge reinforced vinyl that is easy to clean. Seams are sewn & tear resistant. Radiolucent, however seams on the edge may show.

cat. #	Positioner	L x W x H
YVFCE	Veterinary Ultrasound Immobilizer	48" x 18" x 5"
YVFCS	Veterinary Ultrasound Immobilizer	36" x 18" x 5"

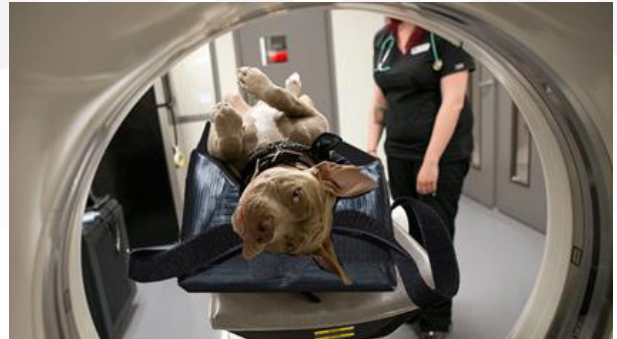


## Veterinary Immobilizers

Veterinary Immobilizers from Techno-Aide saves time with positioning. Available in a variety of sizes to meet all your imaging needs. Available in Black or Royal Blue.

### Covered stabilizer sponges:

This immobilizer is covered with Techno-Tuff nylon reinforced vinyl that is virtually claw proof! Features four hook and loop straps with which to secure limbs while in position. Versatile for several applications.



cat. #	size	L x W x H
QYVCA	SMALL	10" x 4" x 3"
QYVCB	MEDIUM	15" x 7" x 5"
QYVCC	LARGE	24" x 11" x 7"
QYVCD	X LARGE	36" x 14" x 9"
QYVCK	Set of all 4	

### NEW

QYVCE	XX LARGE	47.5" x 18" x 12"
-------	----------	-------------------



Available in Royal Blue and Black



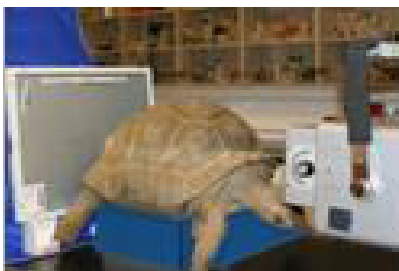
Hook & Loop straps help secure limbs while in any position!

## Veterinary Positioning Blocks

Vinyl covered Positioning devices provide excellent stability during positioning for an examination. Reusable blocks, bolsters and wedges are manufactured from firm high density urethane foam. Royal blue outer covering is durable heavy gauge reinforced vinyl. (Not claw or teeth proof) Seams are sewn and tear resistant. Easy to clean and radiolucent, however seams on edge may show. Provides your animals excellent support for a wide variety of imaging needs. Custom sizes available!



Cat #	positioner	L x W x H
YVF45	Cylinder	26" x 6"
YVFA	Cylinder	24" x 8"
YVFB	Semi Round	8" x 18" x 6"
YVFJ	Block	8" x 12" x 3"
YVFG	Block	8" x 12" x 6"
YVFH	Block	12" x 14" x 3"
YVFP	Block	18" x 24" x 4"
YVFK	Block	20" x 13" x 3"
YVFI	Block	24" x 15" x 3"
YVF42	Block	12" x 12" x 9"
YVF43	Block	12" x 12" x 12"
YVF78	Block	25" x 17" x 2"
YVFQ	Block	20" x 20" x 12"
YVFU	30/60/90 degree Wedge	10" x 24" x 6"
YVFO	45 degree Wedge	7" x 21" x 7"
YVFD	45 degree Wedge	8" x 16" x 8"
YVFC	20 degree Wedge	24" x 18" x 6"
YVDB	30 degree Wedge	28" x 27" x 16"
YVDA	45 degree Wedge	28" x 14" x 14"
YVFE	20 degree Wedge	12" x 32" x 12"
YVFF	50 degree Wedge	20" x 32" x 12"



## Vinyl-Covered Bolster Blocks

Reusable blocks, bolsters, and wedges are manufactured from firm, high-density urethane foam. Royal Blue outer covering is durable, heavy gauge, reinforced vinyl. Seams are sewn and tear resistant. Easy to clean Bolsters are RADIOLUCENT. Seams may show. Provides excellent support for a wide variety of imaging needs.

**#YVFJ**  
Block  
8" x 12" x 3"



**#YVFH**  
Block  
12" x 14" x 3"



**#YVFI**  
Block  
24" x 15" x 3"



**#YVFG**  
Block  
8" x 12" x 6"



**#YVFK**  
Block  
20" x 13" x 3"



**#YVFP**  
Block  
18" x 24" x 4"



**#YVFA**  
Cylinder  
24" x 8" dia.



**#YVFB**  
Semi-Round  
8" x 18" x 6"



**#YVF45**  
Cylinder  
26" x 6" dia.



**#YVF42**  
Block  
12" x 12" x 9"



**#YVF43**  
Block  
12" x 12" x 12"



**#YVFQ**  
DEXA Block  
20" x 20" x 12"



## Vinyl-Covered Bolsters Wedges

Reusable blocks, bolsters, and wedges are manufactured from firm, high-density urethane foam. Royal Blue outer covering is durable, heavy gauge, reinforced vinyl. Seams are sewn and tear resistant. Easy to clean Bolsters are **RADIOLUCENT**. Seams may show. Provides excellent support for a wide variety of imaging needs.

**#YVFD**  
45° Wedge  
8" x 16" x 8"



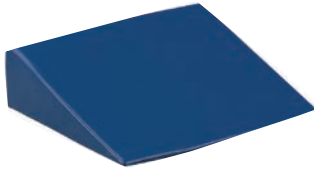
**#YVFU**  
30°/60°/90° Wedge  
10" x 24" x 6"



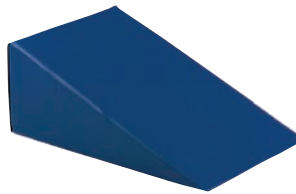
**#YVFO**  
45° Wedge  
7" x 21" x 7"



**#YVFC**  
20° Wedge  
24" x 18" x 6"



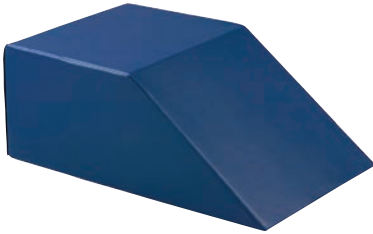
**#YVFE**  
20° Wedge  
20" x 32" x 12"



**#YVDB**  
30° Cardiac Wedge  
28" x 27" x 16"



**#YVFF**  
50° Wedge  
20" x 32" x 12"



## Vinyl Covered Bolster Kits

Reusable blocks, bolsters, and wedges are manufactured from firm, high-density urethane foam. Royal Blue outer covering is durable, heavy gauge, reinforced vinyl. Seams are sewn and tear resistant. Easy to clean Bolsters are RADIOLUCENT. Seams may show. Provides excellent support for a wide variety of imaging needs.

**#YSU2**  
**KIT Includes:**  
 (2) YVFG, YVFJ



**#YSU1**  
**KIT Includes:**  
 YVFB, (2) YVFG, YVFJ



**#YSU3**  
**KIT Includes:**  
 YVFB, YVFD, YVFG



**#YSU5**  
**KIT Includes:**  
 YVFB, YVFC, YVFD,  
 YVFJ, YVFO



**#YSU6**  
**KIT Includes:**  
 YVFJ, YVFK,  
 YVFO, YVFM



**#YSU4**  
**KIT Includes:**  
 YVFA, YVFB, YVFC, YVFD,  
 YVFG, YVFH, YVFJ, YVFK





## Veterinary Immobilizer Sponges

Positioning devices are one of the most important accessory items used in veterinary radiography. Their use is important for the obvious difficulties of maintaining position of the animal throughout an examination.

### Coated

cat. #	size	L x W x H
QYCCA	SMALL	10" x 4" x 3"
QYCCB	MEDIUM	15" x 7" x 5"
QYCCC	LARGE	24" x 11" x 7"
QYCCD	X LARGE	36" x 14" x 9"

### Non-Coated

cat. #	size	L x W x H
QYFCA	SMALL	10" x 4" x 3"
QYFCB	MEDIUM	15" x 7" x 5"
QYFCC	LARGE	24" x 11" x 7"
QYFCD	X LARGE	36" x 14" x 9"



### Immobilizer sponges:

Non-coated sponges are manufactured from a soft open cell polyurethane foam that provides excellent support and comfort.

**NOT Claw or teeth proof.**

Coated sponges are the same standard light green sponge above, but coated with a medical grade durable and easy to clean surface that is resistant to blood, Betadine, barium, alcohol, oils, urine, and feces. Ideal for easy cleaning.

**NOT Claw or teeth proof.**

AVAILABLE  
IN 4  
SIZES!



# Sandbags

All sandbags are filled with sand and are ready to use. Heat sealed inner sleeve prevents the leakage of sand. All seams are sewn and tear resistant. Deep green outer cover is heavy gauge, reinforced vinyl. Every sandbag includes a reinforced webbing handle.

**Custom  
Sizes  
Available!**

- Sandbag Colors**  
(Sandsocks not included)
-  Green (default)
  -  Black
  -  Red
  -  Blue
  -  Yellow



1-lb  
4" x 5"  
#SBP-01



2-lb  
4" x 9"  
#SBP-02



3-lb  
5" x 9"  
#SBP-03



5-lb  
7" x 9"  
#SBP-05



5-lb  
6" x 12"  
#SBF-05



5-lb  
9" x 9"  
#SBC-05



7-lb  
10" x 10"  
#SBG-07



7-lb  
6" x 14"  
#SBF-07



10-lb  
7" x 16"  
#SBF-10



20-lb  
8" x 21"  
#SBF-20



10-lb  
11" x 11"  
#SBC-10



10-lb  
11" x 11"  
#SBC-AC

AC Joint  
Sandbag  
with wrist  
grip



15-lb  
12" x 12"  
#SBG-15



20-lb  
12" x 14"  
#SBC-20

# Sandbag Kits

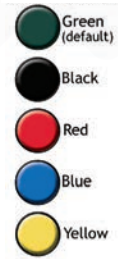
Stack up savings by ordering kits

## General Set (A) Cat.#SBK-GA

included	description	quantity
SBP-03	3lb / 5" x 9"	2
SBF-07	7lb / 6" x 14"	2
SBC-10	10lb / 11" x 11"	2
SBP-05	5lb / 7" x 9"	1
SBF-05	5lb / 6" x 12"	1



### Sandbag Colors



## General Set (B) Cat.#SBK-GB

included	description	quantity
SBP-03	3lb / 5" x 9"	2
SBF-07	7lb / 6" x 14"	2
SBC-10	10lb / 11" x 11"	2



## General Set (C) Cat.#SBK-GC

included	description	quantity
SBP-01	1lb / 4" x 5"	1
SBP-03	3lb / 5" x 9"	1
SBF-05	5lb / 5" x 12"	1
SBP-05	5lb / 7" x 9"	1
SBG-07	7lb / 10" x 10"	1
SBF-07	7lb / 6" x 14"	1
SBF-10	10lb / 7" x 16"	1
SBG-15	15lb / 12" x 12"	1



Sandbags include a free weight ID tag!

# Sandsocks

Sandsocks are loosely filled sandbags that contour to a broad range of shapes and forms. Stabilizes hard-to-hold and irregular anatomy. No need for additional person to hold the patient. Double seams for strength and longevity. Flexible, heavy gauge, reinforced vinyl. Only available in "honey" color.

**Custom  
Sizes  
Available!**

**Sandsock Set**    Cat.#SBK-SA

included	description	quantity
SBS-01	1lb / 2" x 8"	1
SBS-03	3lb / 4" x 12"	1
SBS-05	5lb / 5" x 15"	1
SBS-10	10lb / 6" x 20"	1
SBS-12	12lb / 6" x 25"	1

1-lb 2" x 8"  
**#SBS-01**  
Each



3-lb 4" x 12"  
**#SBS-03**  
Each



5-lb 5" x 15"  
**#SBS-05**  
Each



10-lb 6" x 20"  
**#SBS-10**  
Each



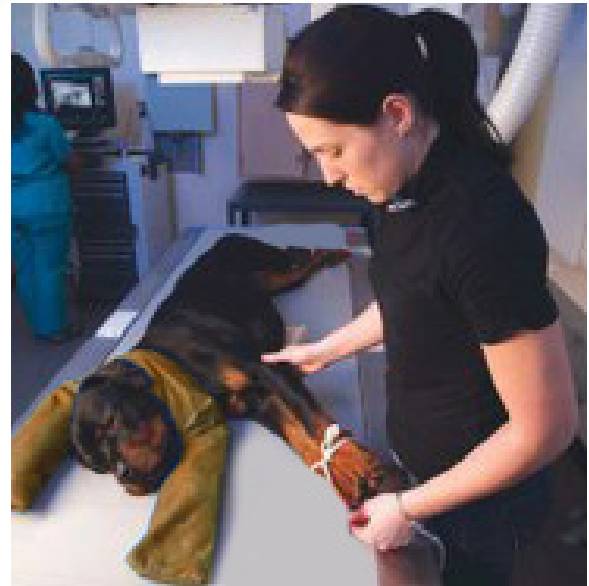
12-lb 6" x 25"  
**#SBS-12**  
Each



10-lb 6" x 28"  
**#SBS-28**  
Each



15-lb 6" x 40"  
**#SBS-40**  
Each



Sandbags include a free weight ID tag!



## Aquasonic Clear®

Same as Aquasonic® 100, but with no fragrance or color

Aquasonic 100 ultrasound transmission gel now has partner in Aquasonic Clear. From Parker Laboratories, the world leader in ultrasound products. Aquasonic Clear is made from the purest water with absolutely no perfumes or dyes. As with Aquasonic 100, Aquasonic Clear is hypoallergenic and will consistently provide superior ultrasound transmission. Choose Aquasonic Clear—the benefits are visible!

cat. #	size per unit	units/box
USC-025	250ml bottle	12
USC-100	1 liter bottle	6
USC-500	5 liter jug w/bottle	1

### FEATURES:

- No Fragrance or color
- Water Soluble
- Hypoallergenic
- Bacteriostatic
- Non-irritating
- No Formaldehyde
- Not a spermicide
- Acoustically correct

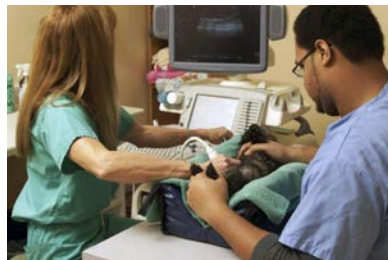


## Aquasonic® 100

Industry standard ultrasound transmission gel

Recommended for all procedures where a viscous gel is required. Acoustically correct for the broad range of frequencies used. Aqueous formula will not stain clothing or damage transducers. Hypoallergenic, bacteriostatic, non-sensitizing, non-irritating.

cat. #	size per unit	units/box
USO-025	250ml bottle	12
USO-100	1 liter bottle	6
USO-500	5 liter jug w/bottle	1
USO-048	20g sterile pouch	48
USO-030	Non sterile pouch	100



## Sterile Aquasonic 100® Ultrasound Transmission Gel

The World Standard for sterile ultrasound gel, STERILE AQUASONIC 100 is recommended for diagnostic and therapeutic ultrasound applications when sterility is indicated.

**Cat# USO-048**

20 g overwrapped foil pouches,  
48 sterile pouches per box



**FEATURES:**

- Overwrapped, sterilized foil pouch
- Acoustically correct for ultrasound
- Non-irritating, hypoallergenic
- Completely aqueous, will not stain clothing, damage equipment or irritate
- Non-injurious to transducers

## SCAN Dual-Viscosity Ultrasound Transmission Gel

Dual-viscosity formula allows SCAN to be applied as a gel and scan as a fluid. For ultrasound procedures when a less viscous gel is desired! Available in three sizes.

**Cat. #**

USS-024  
USS-380  
USS-438

**Description**

237ml Bottle / 12 per box  
1 Gallon Bottle / 1 per box  
Scan Gallons /

AVAILABLE  
IN THREE  
SIZES!



**FEATURES:**

- Acoustically correct for ultrasound
- Completely aqueous, will not stain clothing, damage equipment or irritate
- Recommended by manufacturers of ultrasound equipment worldwide
- No formaldehyde

## Ultrasound Gel Warmers

“Uni-Sleeve” heating element adjusts up to 122°F. Illuminated On/Off switch with hospital grade cord. Stainless Steel with white powder coat finish. 5”w/8”w/11”w x 6”d x 5”h. Fits standard 250ml gel bottles

**Steel Gel Warmers**

cat. #	rating	capacity
UGW-U01	UL/CSA approved	1
UGW-U02	UL/CSA approved	2



## Empty Dispenser Bottles

Standard 250ml bottles can be used for ready refills or as a back-up supply when filled from a larger container. Comes with a black tip cap and can be used in ultrasound gel warmers.

**#USB-012**  
dozen



## EZ-Guard (Hook & Loop)

EZ-On / EZ-Off. Our Most Popular Front Protection apron with an easy criss-cross back and **Hook and Loop** closure on the front. Perfect for every day imaging protection. Double-fold binding for strength and tear resistance. Concealed shoulder pads for extra comfort. Free dual pocket to store an attached thyroid collar and a separate pocket for other items.

### 0.5mm Pb Equivalent Protection

cat. #	lead type	petite/ sm/ med	lg / xl	2X / 3X
EVR	Regular			
EVL	Light Wt.			
EVG	<b>LMG Lead-Free</b>			

### 0.375mm Pb Equivalent Protection

cat. #	lead type	petite/ sm/ med	lg / xl	2X / 3X
EVSR	Regular			
EVSL	Light Wt.			
EVSG	<b>LMG Lead-Free</b>			



**Our Most Popular Apron!**

See color choices on PGs 18-19



## EZ-Guard (Buckle)

EZ-On / EZ-Off. Our Most Popular Front Protection apron with an easy criss-cross back and **Buckle** closure on the front. Perfect for those who prefer a quick adjustable closure. Double-fold binding for strength and tear resistance. Concealed shoulder pads for extra comfort. Free dual pocket to store an attached thyroid collar and a separate pocket for other items.

### 0.5mm Pb Equivalent Protection

cat. #	lead type	petite/ sm/ med	lg / xl	2X / 3X
EBR	Regular			
EBL	Light Wt.			
EBG	<b>LMG Lead-Free</b>			

### 0.375mm Pb Equivalent Protection

cat. #	lead type	petite/ sm/ med	lg / xl	2X / 3X
EBSR	Regular			
EBSL	Light Wt.			
EBSG	<b>LMG Lead-Free</b>			

## Flex-Guard (Hook & Loop)

Front Protection apron with flexible stretch criss-cross back and **Hook and Loop** closure on the front. Excellent fit for full day imaging protection by providing less weight on the shoulders and snug fit at the back. Double-fold binding for strength and tear resistance. Free dual pocket to store an attached thyroid collar and a separate pocket for other items. Concealed shoulder pads for extra comfort.

### 0.5mm Pb Equivalent Protection

cat. #	lead type	petite/ sm/ med	lg / xl	2X / 3X
FVR	Regular			
FVL	Light Wt.			
FVG	<b>LMG Lead-Free</b>			

### 0.375mm Pb Equivalent Protection

cat. #	lead type	petite/ sm/ med	lg / xl	2X / 3X
FVSR	Regular			
FVSL	Light Wt.			
FVSG	<b>LMG Lead-Free</b>			



See color choices on PGs 18-19



## Flex-Guard (Buckle)

Front Protection apron with flexible stretch criss-cross back and **Buckle** closure on the front. Excellent fit for full day imaging protection by providing less weight on the shoulders and snug fit at the back. Double-fold binding for strength and tear resistance. Free dual pocket to store an attached thyroid collar and a separate pocket for other items. Concealed shoulder pads for extra comfort.

### 0.5mm Pb Equivalent Protection

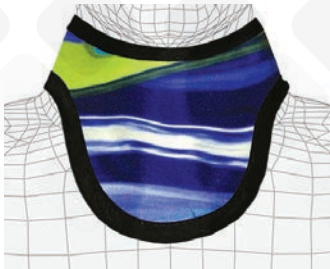
cat. #	lead type	petite/ sm/ med	lg / xl	2X / 3X
FBR	Regular			
FBL	Light Wt.			
FBG	<b>LMG Lead-Free</b>			

### 0.375mm Pb Equivalent Protection

cat. #	lead type	petite/ sm/ med	lg / xl	2X / 3X
FBSR	Regular			
FBSL	Light Wt.			
FBSG	<b>LMG Lead-Free</b>			



## Thyro-Guards



### Standard

Binding all around means affordable comfort and flexibility.



### No Binding

No binding means extra comfort, flexibility and lighter weight.



### Mid-Binding

No binding at the top means extra comfort under the chin.

#### 0.5mm Pb Equivalent Protection

CAT. #	Lead Type
TYR	Regular
TYL	Light Wt.
TYG	<b>LMG Lead-Free</b>

CAT. #	Lead Type
TNR	Regular
TNL	Light Wt.
TNG	<b>LMG Lead-Free</b>

CAT. #	Lead Type
TVR	Regular
TVL	Light Wt.
TVG	<b>LMG Lead-Free</b>

#### 0.375mm Pb Equivalent Protection

CAT. #	Lead Type
TYSR	Regular
TYSL	Light Wt.
TYSG	<b>LMG Lead-Free</b>

CAT. #	Lead Type
TNSR	Regular
TNSL	Light Wt.
TNSG	<b>LMG Lead-Free</b>

CAT. #	Lead Type
TVSR	Regular
TVSL	Light Wt.
TVSG	<b>LMG Lead-Free</b>

## Attached Standard

#### 0.5mm Pb Equivalent Protection

CAT. #	Lead Type
TAR	Regular
TAL	Light Wt.
TAG	<b>LMG Lead-Free</b>

CAT. #	Lead Type
TCR	Regular
TCL	Light Wt.
TCG	<b>LMG Lead-Free</b>

CAT. #	Lead Type
TWR	Regular
TWL	Light Wt.
TWG	<b>LMG Lead-Free</b>

#### 0.375mm Pb Equivalent Protection

CAT. #	Lead Type
TASR	Regular
TASL	Light Wt.
TASG	<b>LMG Lead-Free</b>

CAT. #	Lead Type
TCSR	Regular
TCSL	Light Wt.
TCSG	<b>LMG Lead-Free</b>

CAT. #	Lead Type
TWSR	Regular
TWSL	Light Wt.
TWSG	<b>LMG Lead-Free</b>

## Buckle Closure

If you prefer buckle closure to regular hook & loop, add "-B" to any of the collar numbers above for an extra charge.

(Call for pricing)



Buckle closure option available!

## Attached Thyroid Collars

### All Attached Thyroid Collars include:

- 1) A snap ring for easy collar attachment.
- 2) Attach anytime with tethered strap.
- 3) Unique 2-in-1 pocket design.

[store collar in one pocket and use other pocket for accessories]

Standard, No-Binding, and Mid-Binding collars are 6" tall x 6 1/2" wide x 24" strap.



Attached Thyroid option and our unique 2-in-1 pocket design!

## Economy Protective Bundle Kit

Perfect Economy Bundle Kit for transporting your protective gear from one facility to another. Features 0.5mm Pb protection for the apron and matching thyroid shield.

**Cat. #**      **Media type**  
 BNDL-AE14R      Regular Lead

### BUNDLE INCLUDES

- **EGRL** Econo Guard Apron Regular Lead
- **TYR** Standard Thyroid shield attached
- **LER-6SPL** Sure Guard Plano glasses
- **ACB-28** Carrying Bag



See color choices on PGs 18-19

## Apron Tote Bag Only!

Convenient tote for all your protective wear. Durable rip-stop nylon fabric with zippered closure. 28" long to minimize folding your aprons. EZ carry handle and shoulder strap included.

Apron tote bag default is #64 anti-microbial black onyx

#ACB-28



## Veterinary Bundle Kit

Veterinary equipment and radiology accessories for your facility. Includes one of the following items listed below. New Default sapphire blue (#61) Anti-Microbial protective fabric. Three media types available to choose from. Available in more colors. (pgs 17-18)

### BUNDLE INCLUDES

- **EVL-L** EZ Guard Apron Size Large
- **TAL** Thyroid Shield attached (not shown)
- **LER-PBPL** Power Guard protective glasses
- **MGP** Pair of Palm Guard Protective Mittens (Choose color)
- **AGR-115** Apron & Glove Rack
- **ACB-28** Matching Carrying Bag

### MEDIA TYPES

cat. #	lead type
BNDL-VF14R	Regular
BNDL-VF14L	Light Wt.
BNDL-VF14G	<b>LMG Lead-Free</b>



**NEW ANTI-MICROBIAL** Inhibits the growth of bacteria and other microorganisms on fabric surface



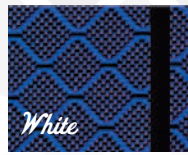
N911-Stratos



N921-Ocean



N933-Midnight



61-Sapphire



64-Onyx



65-Amethyst

**NYLON SOLIDS** Liquid Repellent, Light & Supple



11-Royal Blue



12-Navy



20-Green



21-Teal



22-Forest



23-Slate



33-Black



41-Sunshine



43-Orange



51-Red



52-Hot Pink



53-Purple



54-Berry



55-Burgundy

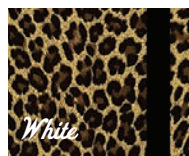


56-Brown

**COLORFUL PRINTS** Liquid Repellent, Medium Weight



70-Blue Plaid



71-Leopard



72-Lots•O•Dots



74-Playful Pups



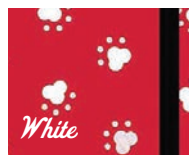
76-Blue Paws



77-Life Vines



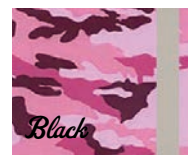
78-Waterfall



80-Red Paws



81-Black Paws



82-Pink Camo



83-Cool Waves



85-Digital Camo



86-Camo Night



84-Big Dipper



95-Andromeda

Prints are shown SMALLER than actual size

**DIAMOND RIPSTOP** Medium Weight Nylon, Filament Reinforced



61-Sapphire



62-Ruby



63-Emerald



64-Onyx



65-Amethyst

**NATURA** Smooth, Soft, Flexible with a Natural Feel



N911-Stratos



N921-Ocean



N933-Midnight



**FEATHER RIPSTOP** Light Weight Nylon, Filament Reinforced



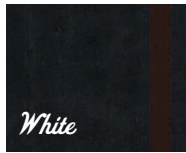
R701-Royal Blue



R702-Red



R703-Forest



R704-Black



R705-Chocolate



R706-Navy



R707-Burgundy



R708-Kelly



R709-Charcoal



R710-Gray

## Hand Guard Mittens

The Veterinary Market may receive some of the highest doses of radiation to the hand because of the frequent holding of pets during imaging. Chronic irradiation of the hands is a principle concern. Shield hands from the harmful effects of exposure by using a full 360 degree protection as shown below. Sold as a pair (two mittens).

**NIOSH:** The National Institute for Occupational Safety and Health guidelines state that No Part of the body should be directly exposed to radiation. If there is a danger of exposing a body part, that **Appropriate Protection** must be used.

**Cat# QHSRP**  
sold as a pair  
(Your choice of)



## Palm Guard Radiation Protective Mittens

Flexible for grasping and holding animals during imaging. Colorful fabric on one side and soft touch neutral on the palm side. 0.5mm Pb equivalency.

cat. #	lead type
MGRP	Regular
MGLP	Light Wt.
MGGP	<b>LMG Lead-Free</b>

Please  
reference  
color selections  
on pages  
18-19



## Palm Guard Mittens & Gloves

The Veterinary Market may receive some of the highest doses of radiation to the hand because of the frequent holding of pets during imaging. Chronic irradiation of the hands is a principle concern. Shield hands from the harmful effects of exposure by using a full 360 degree protection as shown below. Sold as a pair.

**NIOSH:** The National Institute for Occupational Safety and Health guidelines state that No Part of the body should be directly exposed to radiation. If there is a danger of exposing a body part, that **Appropriate Protection** must be used.



### Palm Guard Radiation Protective Mittens

Full palm protection with thumb extension for grip. 0.5mm Pb equivalency dip molded core. Durable, soft vinyl covering. 15". Available with and without palm slit. Sold as a pair.



Palm-Guard Slitted Mittens

<b>cat. #</b>	<b>hand</b>
PSP	Pair



Palm-Guard Mittens (no slit)

<b>cat. #</b>	<b>hand</b>
PGP	Pair

### Hand Guard Radiation Protective Gloves

Five fingered protection for full dexterity. 0.5mm Pb equivalency dip molded core. Durable, soft navy vinyl covering. 15". Sold as a pair.



Hand-Guard 5-Finger

<b>cat. #</b>	<b>hand</b>
HGP	Pair

## Omni Blankets

Can be used over animals or equipment to protect from radiation exposure. Used underneath an animal, prevents scatter radiation.

Choose Your Favorite Color  
Pgs 18-19

### 0.5mm Pb Equivalency

cat. #	lead type	small	medium	large	x-large
OMR	Regular				
OML	Light Wt.				
OMG	<b>LMG Lead-Free</b>				

### 0.375mm Pb Equivalency

cat. #	lead type	small	medium	large	x-large
OMSR	Regular				
OMSL	Light Wt.				
OMSG	<b>LMG Lead-Free</b>				

**NEW ADD GROMMETS:** if you would like to hang your Omni-Guard as a curtain, you can add grommets at the time of ordering. Let us know your desired location and the distance between grommets. Maximum width: 48". State on your Omni-Guard order: **Cat.#OM-GR** for up to five (5) grommets. (extra fee applies)



### SIZING CHART

Size	(Width x Length)
S	(18" x 18")
M	(24" x 24")
L	(24" x 36")
X	(24" x 48")

**CUSTOM SIZES AVAILABLE!**

## Lead Blockers

Lead Blockers maximize efficiency and optimize use of imaging. Divides receptor for multiple exposures. Covered with blue vinyl laminate. 1mm lead equiv.

cat. #	Blocker size	Fits imaging receptor
FLB-58	5" X 8"	8 X 10
FLB-52	5" X 12"	10 X 12
FLB-61	6" X 10"	10 X 12
FLB-71	7" X 11"	11 X 14
FLB-77	7" X 17"	14 X 17
FLS-78	SET OF ALL 5	



## Radiation Protective Glasses

The eyes are one of the most sensitive areas of the body, and are one of the most vulnerable to radiation. Safeguard them from damage by using high-quality lead glasses for each & every x-ray procedure. We remind medical facilities to take the necessary steps to protect your medical personnel and patients by implementing the use & wear of radiation glasses for your imaging facility.

It is certified that the manufacturers technical file and the PPE product detailed has been assessed and found to be in accordance with EC Directive 89/686/EEC. Certificate #GB14/92290, GB14/92291



Regulation 1910.132(a) Requires glasses to be worn near radiological hazards.

### Cover-Guard

**Comfortable protection over regular glasses.**

Excellent front and side visibility. Provides limited splash protection. Can be worn over prescription eyewear. Regular hinges with molded nose piece. Includes 0.75mm Pb glass side shields. Includes premium case.

Lead Equiv.: 0.75mm front and sides.	<b>Model#</b> LES-CKPL LES-CWPL LES-CTPL	<b>Color</b> Black White Tortoise
Weight: 85 grams.		
Frame: Black rubberized nylon.	Plano Lens	



### Power-Guard

**Colortone accents increase comfort.**

Large lens area for excellent coverage. Soft colored endpiece for comfort and fit. Padded bridge, temples, and endpiece. Available in most prescriptions. Includes premium case.

Lead Equiv.: 0.75mm lens.	<b>Model#</b> LER-PBPL LER-PSPL LER-PKPL	<b>Color</b> Blue/Orange Silver/Pink Black/Gray	<b>Prescription Options</b> Single Vision Bifocal
Weight: 64 grams.			
Frame: Impact resistant polycarbonate.	Plano Lens		



### Sure-Guard

**Stylish design for medium faces.**

Large lens area for excellent coverage. Regular hinges with wrap around frame. Rubber, ultra-soft, fixed nose piece. Available in almost all prescriptions. Includes premium case. Lead Equiv.: 0.75mm lens. Weight: 63 grams. Frame: TR-90 Nylon.

Lead Equiv.: 0.75mm lens.	<b>Model#</b> LER-6SPL LER-6KPL LER-6RPL LER-6BPL	<b>Color</b> Silver Black Red Blue	<b>Prescription Options</b> Single Vision Bifocal
Weight: 63 grams.			
Frame: TR-90 Nylon.	Plano Lens		





## Ultra-Guard

**Ultra-light and super stylish.**

Curved lens adds to lateral protection. Regular hinges with wrap around frame. Universal bridge support. Available in most prescriptions. Includes premium case.

Lead Equiv.: 0.75mm lens.  
 Weight: 67 grams.  
 Frame: TR-90 Nylon.

Model#	Color
LER-9SPL	Silver
LER-9KPL	Black
LER-9TPL	Taupe
LER-9PPL	Pink

**Prescription Options**  
 Single Vision  
 Bifocal

Plano Lens



## Avant-Guard

**Two-tone colorful Ultra-Guards.**

Curved lens adds to lateral protection. Regular hinges with wrap around frame. Universal bridge support. Available in most prescriptions. Includes premium case.

Lead Equiv.: 0.75mm lens.  
 Weight: 67 grams.  
 Frame: TR-90 Nylon.

Model#	Color
LER-ACPL	Carbon/Gray
LER-APPL	Purple/Gray
LER-AYPL	Yellow/Blue

**Prescription Options**  
 Single Vision  
 Bifocal

Plano Lens



## Turbo-Guard

**For that sharp and stream-lined look.**

Large lens area for excellent coverage. Rubberized temple bars for comfortable grip. Rubber, ultra-soft, fixed nose pad. Available in almost all prescriptions. Includes premium case.

Lead Equiv.: 0.75mm lens.  
 Weight: 65 grams.  
 Frame: Impact resistant nylon.

Model#	Color
LER-TRPL	Red
LER-TKPL	Black
LER-TSPL	Silver

**Prescription Options**  
 Single Vision  
 Bifocal

Plano Lens



## Wrap-Around

**The "original" with great side protection.**

Generous lens area increases protection. Spring hinges and adjustable nose. Available in most prescriptions. Includes premium case. Prescription lens available.

Lead Equiv.: 0.75mm lens.  
Frame: Impact resistant plastic.

Model#	Color
LES-53PLT	Tortoise
LES-53PLC	Crimson
LES-53PLB	Blue
Plano Lens	



## Viva-Guard

**Lively designs for small faces.**

Smaller frame for excellent fit of smaller faces. Regular hinges with wrap around frame. Ultra soft bridge support. Available in most prescriptions. Includes premium case.

Lead Equiv.: 0.75mm lens.  
Weight: 60 grams.  
Frame: Impact resistant polycarbonate.

Model#	Color	Prescription Options
LER-VFPL	Fancy Flight	Single Vision
LER-VVPL	Cherry Vines	
LER-VSPL	Rad Skull	
Plano Lens		



## Predator-Guard

**Radiation protection and splash protection.**

Close fit provide excellent visibility. Extra soft nose pads for superior comfort. Wrapping lens area increases protection. For larger framed faces. Includes premium case.

Lead Equiv.: 0.75mm lens.  
Weight: 70 grams.  
Frame: TR-90 Nylon.

Model#	Color
LER-DKPL	Black
Plano Lens (Prescription Lens NOT available)	



## Wall Mounted Apron Racks

Ten or five swing-arm wall-mount apron racks. Mounting holes on 16" centers. All-steel durability with white enamel finish.



10-Arm #ARW-10



5-Arm, Swing Right #ARW-R5



5-Arm, Swing Left #ARW-L5

## Glove Adapter

Retrofits to Mobile Rack. Holds six (6) 18" gloves.

#ARG-06



## Apron/Glove Racks

Designed for one apron, but will hold more. All steel, heavy duty construction and a white finish. 16" & 24" holes match most wall studs. Glove holders mounted onto back panel. 28.5" long x 1.75" diameter bar prevents creasing.

**WITHOUT GLOVE HOLDERS**  
#AGR-105



**WITH TWO GLOVE HOLDERS**  
#AGR-110



**WITH FOUR GLOVE HOLDERS**  
#AGR-115



## Apron Peg Racks

Help extend the life of your aprons. Our apron racks are just the thing for you! 6" angled pegs keep garments from slipping. All-steel white enamel finish.

Custom Peg Racks May Be Available

2-Peg  
(for 1 apron)  
#ARP-02



4-peg  
(for 2 aprons)  
#ARP-04



6-peg and 8-peg racks: mounting holes on 16" and 24" centers.

6-peg  
(for 3 aprons)  
#ARP-06



8-peg  
(for 4 aprons)  
#ARP-08



16-peg  
(for 8 aprons)  
#ARP-16



20-peg  
(for 10 aprons)  
#ARP-20



## Mobile Apron Z-Rack

Z-Base mobile rack nests with others when not in use. Heavy duty casters on 12G steel base. Chromed-steel posts and hang bar. 60" long x 60" tall bar allows hanging without creasing. Ships @ 35 lbs.

Rack ONLY  
#ARM-ZNH

OR

Rack with  
Ten Hangers  
#ARM-Z10



## NEW Mobile Apron Z-Rack Middle Bar Add-On

Middle Bar addition to hang vests and skirts! 63" bar will hold up to 150 lbs. (Mobile apron z-rack sold separately)

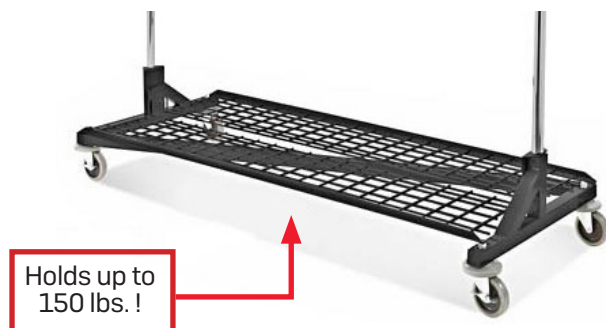
Bar Add-on  
#ARM-BAR



## NEW Mobile Apron Z-Rack Storage Base Add-On

Bottom shelf add-on for storing misc. protective accessories! 62" shelf will hold up to 150 lbs. (Mobile apron z-rack sold separately)

Shelf Add-on  
#ARM-BASE



## Apron Hangers

Designed for standard aprons, panoramic, vests, skirts, etc. Top hook swivels for easy hanging. 21" long chromed-steel with anti-slip tips. Glove holders mounted onto back panel. Use on ARM-ZNH rack, peg rack, etc. Single ships @ 2 lbs.

Single Hanger  
#ARH-01



Set of 10 Hangers  
#ARH-10



## Mobile Apron Rack

Ten (10) swing-arm mobile garment stand. Durable all-steel construction. 24" x 24" H-Base for stability and easy cleaning. E-Z-Roll swivel locking casters. Convenient handle for easy mobility. White enamel finish. Overall height is 55". Some assembly required. Ships @ 110 lb.

Easy-Clean  
H-Base!

Standard Mobile Rack  
#ARM-100

Standard WITH Glove Rack  
#ARM-G60



## NEW 5 Arm Apron Rack

Five (5) swing-arm mobile garment stand. Durable all-steel construction with white enamel finish. 20" x 20" H-Base for stability and easy cleaning. E-Z roll swivel locking casters. Convenient handle for easy mobility. Arms extend to 29.5" outward. We offer the ability to choose whether you need right or left swing arms. Ships @ 80 lbs. motor freight.

#ARM-105



## NEW Multi-Tubular Apron Rack

The perfect solution safe apron storage. Durable all-steel construction. A 24" deep by 32" wide H-base offers stability and easy cleaning. Features E-Z Roll, 3" medical grade swivel locking casters. Convenient handle for easy mobility from room to room. White baked enamel finish. Overall height is 49" and width is 32". Rods are 27" long and spaced 4" apart for easy clearance and storage. Stores up to 5 aprons in tight spaces without crinkling or damaging aprons.

AVAILABLE IN MORE ENAMEL COLORS!

#ARM-500



E-Z Roll, 3" medical grade, swivel, locking casters!



Convenient handle for easy mobility and storage!

Easy-Clean H-Base!



Holds up to 5 Aprons at once!

(Aprons sold separately)

## NEW Mobile Combination Protection Rack

The ultimate option for serious radiation protection storage. This versatile rack holds 6 aprons, 3 pairs of gloves, and 6 pairs of radiation protection glasses. Comes with 6 heavy duty apron hangers for quick apron access. Durable all-steel construction. A 24" deep by 28" wide" H-base offers stability and easy cleaning. Features E-Z Roll, 3" medical grade swivel locking casters. White baked enamel finish. Overall height is 79", width is 30" and depth is 24". The perfect height to hang aprons avoiding damage from crinkling. Soft rubber rings and 6 high grade mounts create the ultimate protection for radiation glasses at all times.

#ARM-600



AVAILABLE IN MORE ENAMEL COLORS!





## Standard Shield

0.5mm Pb equivalency.  
Adjustable height: 36" to 60". Stable, five-legged star base. Default color: Anti-Microbial Sapphire Blue nylon.

### 0.5mm - SHIELDING

cat. #	media	width x height
LPS-S2424	lead	24" x 24"
LPS-S2436	lead	24" x 36"
LPS-S2448	lead	24" x 48"
LPSG-S2424	lead-free	24" x 24"
LPSG-S2436	lead-free	24" x 36"
LPSG-S2448	lead-free	24" x 48"



## Max-Shield

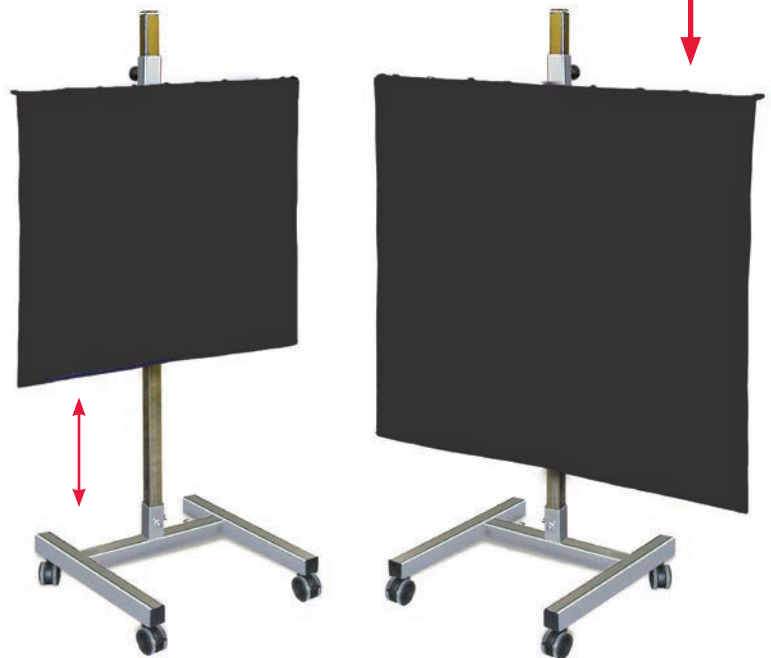
0.5mm Pb equivalency.  
Adjustable height: 8" to 60". All steel H-base for maximum stability. Hardened chrome steel post. Posi-Lock height adjustable arm with spring-loaded pin. Default color: Anti-Microbial Sapphire Blue nylon.

### 0.5mm - SHIELDING

cat. #	media	width x height
LPS-H3636	lead	36" x 36"
LPS-H4848	lead	48" x 48"
LPSG-H3636	lead-free	36" x 36"
LPSG-H4848	lead-free	48" x 48"

### 1.0mm - SHIELDING

cat. #	media	width x height
LPS-H3636-1	lead	36" x 36"
LPS-H4848-1	lead	48" x 48"
LPSG-H3636-1	lead-free	36" x 36"
LPSG-H4848-1	lead-free	48" x 48"



## Viewing Window Barriers

Bring a full **2.0mm Pb Equivalency** of radiation protection anywhere you need it with our x-ray protective mobile barriers. Each barrier features a **10" w x 12" h** clear window made of x-ray protective leaded glass; Window center is 60" from the bottom of the panel. Opaque barrier section is made of solid, leaded x-ray protection; Locking caster system. Custom sizes available.

Call for pricing on all barriers.

Add Some  
COLOR!  
pg. 34



**#PBMW-2472 (Glass)**  
(Call for Price)  
Leaded Glass: 10" w x 12" h  
Overall Size: 24" w x 72" h  
Ships @ 350 lbs.



**#PBMW-3072 (Glass)**  
(Call for Price)  
Leaded Glass: 10" w x 12" h  
Overall Size: 30" w x 72" h  
Ships @ 450 lbs.



**#PBMW-3672 (Glass)**  
(Call for Price)  
Leaded Glass: 10" w x 12" h  
Overall Size: 36" w x 72" h  
Ships @ 450 lbs.



**#PBMW-2484 (Glass)**  
(Call for Price)  
Leaded Glass: 10" w x 12" h  
Overall Size: 24" w x 72" h  
Ships @ 450 lbs.



**#PBMW-3084 (Glass)**  
(Call for Price)  
Leaded Glass: 10" w x 12" h  
Overall Size: 30" w x 84" h  
Ships @ 450 lbs.



**#PBMW-3684 (Glass)**  
(Call for Price)  
Leaded Glass: 10" w x 12" h  
Overall Size: 36" w x 84" h  
Ships @ 500 lbs.

## COLORS for ALL Window & Panel Barriers

Match your facility decor or just brighten up your exam room with your choice of colorful barriers! \* If a color is not specified, our popular NEUTRAL will be the default color. Order by including the COLOR NAME and the FOUR-DIGIT Code# with your Barrier selection.

**COLORS**  
extra charge  
per barrier

**Color add-on is and extra charge per barrier**



Neutral  
#000N  
(DEFAULT)



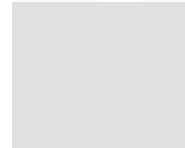
Pink  
#3015



Rose  
#3014



Rust  
#3012



Light Gray  
#7035



Azure  
#5012



Dark Blue  
#5026



Sage  
#1000



Teal  
#6000



Graphite  
#7024

## Default Lead Shield Fabric

### NEW ANTI-MICROBIAL FABRIC

Inhibits the growth of bacteria and other microorganisms on the fabric surface



**NEW Default!**

\*Barrier color may vary slightly from colors printed on this page.

## REFERENCE

“Each radiograph must include an appropriate marker that clearly identifies the patient’s right (R) or Left (L) side. Medico-legal requirements mandate that these markers be present. R and L markers must be used with CR and DR digital imaging. The development of digital imaging and the use of CR and DR have enabled an environment in which the R and L markers can be placed on the image electronically. This is not recommended because of the great potential for error and legal implications. Anatomic markers should be placed on the CR cassette or DR table similar to screen-film cassettes.”  
 [Merrill’s Atlas of Radiographic Positioning and Procedures, 9780323073219, text extract]

Markers can be made with letters or numbers or a combination of both.

### SOLUTIONS FOR EVERY IMAGING NEED!



Initials



Numbers



2 Lines of Letters



2 Lines of letters/numbers

## NEW Marker Mates

A new, reusable sticky strip that adheres markers to receptors or equipment. Simply peel off the protective film and apply to the back of your markers. Each pair of Marker Mates will last approximately 30-days under normal use and care. No more need for tape when you can instantly mate your markers!

### NEW AND IMPROVED

- The world’s **strongest x-ray adhesive**
- **3x Stronger** than standard marker adhesives
- Tested up to **6 months of continuous use** in clinical studies
- **Works with every type of marker!**
- Easy to wash, clean and resue
- **Reduces the spread of infections and disease**

#MM-XRAY 1 pair      #MM-XRAY10 10 pair      #MM-XRAY25 25 pair

**Save money and order in bulk today!**

#MM-XRAY100 100 pair      #MM-XRAY250 250 pair      #MM-XRAY500 500 pair



## Elite Style

Elite markers have the most DURABLE aluminum casing. These markers provide the absolute best in QCI. Easily identifiable. RED for "R" markers and misc. words / BLUE for "L" markers.



**#1E (sold as a set)**  
R & L - 5/8"  
2 initials - 3/8" or 3 initials - 1/4"  
Without initials, order:  
#4E (sold as a set)



**#7E (sold as a set)**  
R & L - 1"  
2 initials - 3/8" or 3 initials - 1/4"  
Without initials, order:  
#5E (sold as a set)



**#11EN (sold as a set)**  
Neonatal Markers R & L is 3/16" and comes with 2 initials or numbers that are 1/8".  
The overall size of the markers is 5/8" tall and 3/4" wide.



**#8E (sold as a set)**  
**NEW Elite PLUS**  
R & L - 5/8" Comes with 2-3 initials per line - 1/4"



**#TA-137 (sold as a set)**  
R & L is 1/2". 2 initials - 1/4"  
**NEW** Without initials, order: **#TA-18** (sold as a set)



**#2E (sold as a set)**  
RIGHT & LEFT - 1/2". 2-3 initials - 1/4"  
Without initials, order:  
#122E (sold as a set)



**#6EB (sold as a set)**  
R & L - 1/2", arrow - 1". 2-3 initials - 1/4"  
Without initials, order:  
#6EA (sold as a set)



**#A-3 each**  
Arrow - 1" Elite Style

Hundreds of custom combinations available!

## Identifier Style

Identifier markers have high-impact polystyrene casing. Enhances quality control with fewer repeat exams. Provides basic, yet personalized image identification.



**#TA-1 (sold as a set)**  
R & L - 5/8"  
2 initials - 3/8" or 3 initials - 1/4"  
Without initials, order:  
#TA-4 (sold as a set)



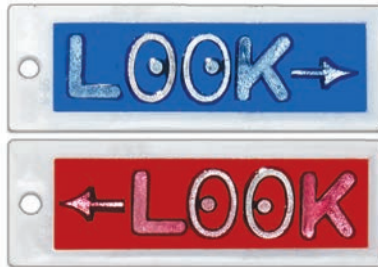
**#TA-7 (sold as a set)**  
R & L - 1"  
2 initials - 3/8" or 3 initials - 1/4"  
Without initials, order:  
#TA-5 (sold as a set)



**NEW #TA-8 (sold as a set)**  
R & L is 5/8", and comes with  
2 or 3 initials per line - 1/4".



**#TA-2 (sold as a set)**  
Right & Left - 1/2", 2 or 3 initials - 1/4"  
Without initials, order: #TA-122 (sold as a set)



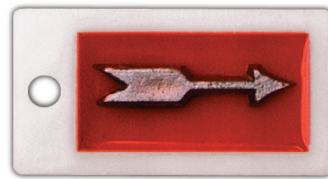
**#TA-LK (sold as a set)**  
Look Right / Look Left  
Arrow + "LOOK" - 1/2"



**#TA-9 (sold as a set)**  
R & L is 1", and comes with  
up to 3 initials 3/16".



**#TA-002 (sold as a set)**  
R & L - 5/8"  
2 initials - 3/8" or 3 initials - 1/4"  
Without initials, order:  
#TA-001 (sold as a set)



**#TA-A3 each**  
Arrow - 1" Identifier Style

Hundreds of custom combinations available!

# Position Indicator Markers

Beads Indicate Patient Position

Our **MOST** popular Position Indicator Marker available in a variety of colors. Mix and match to make your work day fun!  
**Sold as a set with initials.**



**#TA-13 (Sold as a set)**  
 Elite Style R & L - 5/8"  
 2 initials - 3/8" or 3 initials - 1/4"  
 Without initials, order:  
 #TA-14 (sold as a set)



**#TA-13-GP**



**#TA-13-CG**



**#TA-13-PK**



**#TA-13-BK**



**#TA-13-GPK**



**#TA-13-TR**



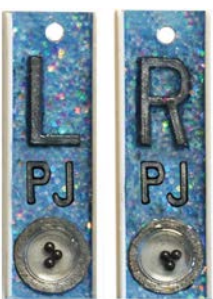
**#TA-13-CY**



**#TA-13-CO**



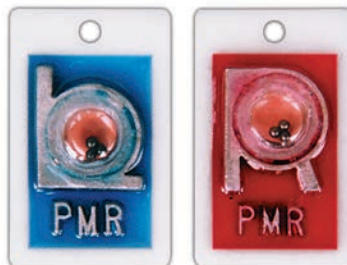
**#TA-13-PW**



**#TA-GPW**



**NEW #TA-11 (Sold as a set)**  
 Elite Style R & L - 5/8"  
 2 initials - 3/8" or 3 initials - 1/4"  
 Without initials, order:  
 #TA-12 (sold as a set)



**#TA-17 (Sold as a set)**  
 Identifier Style R & L - 7/8" Position  
 2 initials - 3/8" or 3 initials - 1/4"



**#TA-16 (Sold as a set)**  
 Identifier Style R & L - 7/8" Position  
 No initials

## Personal Touch Colors & Shapes

Make your mark with our customizable styles!

**Sold as a set**

R & L - 5/8"

2 initials - 3/8" or 3 initials - 1/4"



BLACK SOLID #PT-BK



BROWN SOLID #PT-BR



GREEN SOLID #PT-CG



LIGHT BLUE #PT-PW



YELLOW SOLID #PT-CY



ORANGE SOLID #PT-CO



PURPLE SOLID #PT-CP



PINK SOLID #PT-PK

### Mix and Match Your Favorite Colors!

Want to add some "fun" to your work day? Mix and match colors. It's easy! Choose the color from above and "L" or "R".

For example: (for technologist Terri Andrews)

**PT-BK/L** is a **Black Left** Marker with initials "TA"

**PT-CO/R** is an **Orange Right** Marker with initials "TA"



PT-BK/L

PT-CO/R



# Personal Touch Glitter

Time to make your mark with our unlimited custom combinations!



**RED/BLUE GLITTER**  
**#PT-GR (Sold as a set)**  
 R & L - 5/8"  
 2 initials - 3/8" or 3 initials - 1/4"



**PURPLE GLITTER**  
**#PT-GP (Sold as a set)**  
 R & L - 5/8"  
 2 initials - 3/8" or 3 initials - 1/4"



**LIGHT BLUE GLITTER**  
**#PT-GB (Sold as a set)**  
 R & L - 5/8"  
 2 initials - 3/8" or 3 initials - 1/4"



**YELLOW GLITTER**  
**#PT-YG (Sold as a set)**  
 R & L - 5/8"  
 2 initials - 3/8" or 3 initials - 1/4"



**NEW WHITE GLITTER**  
**#PT-GWH (Sold as a set)**  
 R & L - 5/8"  
 2 initials - 3/8" or 3 initials - 1/4"



**PINK GLITTER**  
**#PT-GA (Sold as a set)**  
 R & L - 5/8"  
 2 initials - 3/8" or 3 initials - 1/4"



**ORANGE GLITTER**  
**#PT-GO (Sold as a set)**  
 R & L - 5/8"  
 2 initials - 3/8" or 3 initials - 1/4"



**GREEN GLITTER**  
**#PT-GG (Sold as a set)**  
 R & L - 5/8"  
 2 initials - 3/8" or 3 initials - 1/4"



**TROPICAL FISH**  
**#PT-FRB**  
 (Sold as a set)



**SKULLS**  
**#PT-SKW**  
 (Sold as a set)



**SKULLS**  
**#PT-SKW-BO**  
 (Sold as a set)

## Standard Thin Clipper

Constructed of high strength Kydex™. Extra thin profile, double-sided, 1 7/8" wide. R and L: 3/4", with or without initials. 2 Initials: 3/8"; 3 initials or words: 1/4".

#CPP-40 (with initials)

#CPP-42 (no initials)



Side View

## Elite Clippers

Both R & L are on one double clip. Durable Stainless Steel clips. Color-coded: R side-Red / L side-Blue.

### Double Personalized

#CP-35

Each  
(2-3 initials)



### Portable & Position Double Clippers

#CP-13

(with initials)  
Each



#CP-36

(with initials)  
Each



#CP-14

(no initials)  
Each

#CP-37

(no initials)  
Each

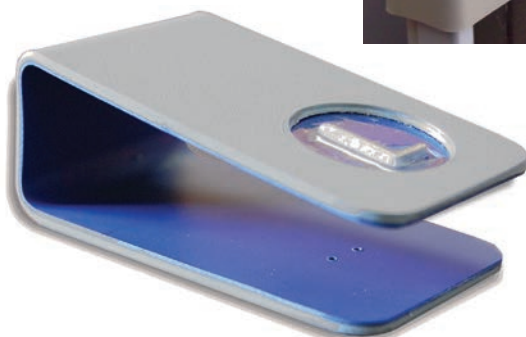
## Gridcap Thin Clipper

Designed to fit DR, CR receptors with gridcap. Constructed of high strength Kydex™. Extra thin profile, double-sided, 1 7/8" wide. R and L: 3/4", with or without initials. 2 Initials: 3/8"; 3 initials: 1/4".

#CPP-60 (with initials)

#CPP-61 (no initials)

each



## Stencil Clipper

High quality plated steel construction. Stenciled, non-personalized right and left identifiers

#XSCP-10

each



## Animal Transporters

Safe and easy way to transport animals that are sick or injured. Flexible style rolls up for easy storage. Easy to clean and disinfect.

CUSTOM SIZES ALSO AVAILABLE

**RUGGED CONSTRUCTION:** Made of durable mesh laminate reinforced vinyl. Buckle closure on 2" webbing straps/ NO Hook & Loop to accumulate fur and dander! Includes six handles made of 1" webbing. 1" webbing extends underneath for added strength.

SMALL  
QATS-30



Includes 6 handles made of 1" webbing for secure transport!

MEDIUM  
QATM-39



NO Hook & Loop to accumulate fur and dander!

LARGE  
QATL-48



## Department Signs

All signs are constructed of durable 1/8" Trovical™, a plastic specific to the sign industry. Double-faced tape is attached to the back for mounting. Large Signs are 8" x 10". Small Signs are 4" x 10". The large MRI "Danger" Signs are 12" x 18".

<p><b>PREGNANT</b></p> <p>IF YOU ARE PREGNANT, OR THINK YOU MAY BE, TELL THE X-RAY TECHNOLOGIST BEFORE HAVING AN X-RAY TAKEN.</p>	<p><b>PREGNANT</b></p> <p>IF YOU ARE PREGNANT, OR THINK YOU MAY BE, TELL THE X-RAY TECHNOLOGIST BEFORE HAVING AN X-RAY TAKEN.</p>	<p><b>¿EMBARAZADA?</b></p> <p>SI USTED ESTA EMBARAZADA O CREE QUE LO ESTA NOTIFIQUESELO AL TECNICO ANTES DE QUE LE TOMEN LOS RAYOS-X.</p>	<p><b>¿EMBARAZADA?</b></p> <p>SI USTED ESTA EMBARAZADA O CREE QUE LO ESTA NOTIFIQUESELO AL TECNICO ANTES DE QUE LE TOMEN LOS RAYOS-X.</p>
#PS-04EB	#PS-04ER	#PS-04SB	#PS-04SR
<p><b>PREGNANT</b></p> <p>IF YOU ARE PREGNANT, OR THINK YOU MAY BE, TELL THE X-RAY TECHNOLOGIST BEFORE HAVING AN X-RAY TAKEN.</p> <p><b>¿EMBARAZADA?</b></p> <p>SI USTED ESTA EMBARAZADA O CREE QUE LO ESTA NOTIFIQUESELO AL TECNICO ANTES DE QUE LE TOMEN LOS RAYOS-X.</p>	<p><b>PREGNANT</b></p> <p>IF YOU ARE PREGNANT, OR THINK YOU MAY BE, TELL THE X-RAY TECHNOLOGIST BEFORE HAVING AN X-RAY TAKEN.</p> <p><b>¿EMBARAZADA?</b></p> <p>SI USTED ESTA EMBARAZADA O CREE QUE LO ESTA NOTIFIQUESELO AL TECNICO ANTES DE QUE LE TOMEN LOS RAYOS-X.</p>	<p><b>VALUABLES</b></p> <p>PLEASE TAKE YOUR VALUABLES WITH YOU</p>	<p><b>VALUABLES</b></p> <p>PLEASE TAKE YOUR VALUABLES WITH YOU</p>
#PS-08B	#PS-08R	#VS-10EB	#VS-10ER
<p><b>CAUTION</b></p> <p>X-RAY IN USE</p>	<p><b>CAUTION</b></p> <p>X-RAY IN USE</p>	<p><b>CUIDADO</b></p> <p>RAYOS-X EN USO</p>	<p><b>CUIDADO</b></p> <p>RAYOS-X EN USO</p>
#CXR-13EB	#CXR-13ER	#CXR-13SB	#CXR-13SR
 <p>Please Turn Off Your Cellphone -- Thank You</p>	 <p>Please Turn Off Your Cellphone -- Thank You</p>	<p><b>X-RAY ROOM</b></p>	<p><b>X-RAY ROOM</b></p>
#NCP-24B	#NCP-24R	#XRR-19B	#XRR-19R
 <p>No Food No Drink</p>  <p>No Cellphone</p>	 <p>No Food No Drink</p>  <p>No Cellphone</p>	<p><b>FOR THE SAFETY OF YOUR PET</b></p>  <p><b>PLEASE KEEP ON LEASH</b></p>	
#NFD-22B	#NFD-22R	Cat# NPV-09E	

## Caution / MRI Signs

Signs give critical information to patients & technologists. Enhances safety with a front line written warning. Many states adopt certain signs as law as part of a good quality assurance program. Check your local laws or program requirements.

More options available online!



#CRA-15



#CRA-17



#CRA-16



#CRA-18



#MBN-13E



#MBN-14S



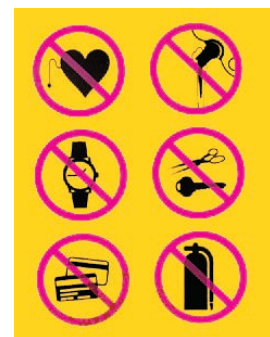
#MBN-15E



#MBN-16S



#CMF-01



#CMM-06

## Radiation Badge Storage Boards

Provides a central location for all badge related activity. Exposure record display area and note clip. Accommodates different styles and sizes of badges. Ring board is also available for Nuclear Medicine and PET.

cat. #	style	badges	board size
FB-10N	narrow	10	12" x 5"
FB-20N	narrow	20	12" x 9.25"
FB-40N	narrow	40	12" x 18"
FB-10W	square/hex	10	12" x 9.25"
FB-20W	square/hex	20	12" x 18"
FB-40W*	square/hex	40	12" x 18"
FB-10R	ring(nuc.med.)	10	12" x 5"

Badges available from your local provider

\*(The FB-40W comes as two boards, each holding 20 badges.)



HEX



SQUARE



SQUARE



RING



NARROW



WIDE

### SQUARE, HEX, WIDE, OBLONG BADGES 1" to 2" wide



#FB-10W



#FB-40W



#FB-20W

### RING BADGES

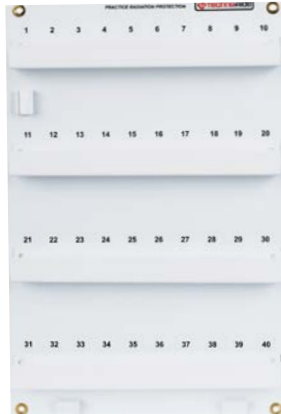


#FB-10R

### NARROW BADGES less than 1" wide



#FB-10N



## E-Z X-Ray Storage Boxes

Allows for the efficient storage of x-ray film files. (Sold in case lots.) Strong and durable with reinforced handles. One piece, easy fold assembly. Can be stacked without crushing. Ideal for archiving files, temporary storage, or moving files. Accommodates jackets up to 14" x 17". Upright: lid opens up. Side down: lid opens forward. (printed legend provided both ways.) Sized for OSHA lift load capacity. Each box O.D.: 6.25" x 16" x 19.5". Ships as 30 lbs. per case. 6 cases or less via FedEx/UPS. 7+ cases via motor freight.

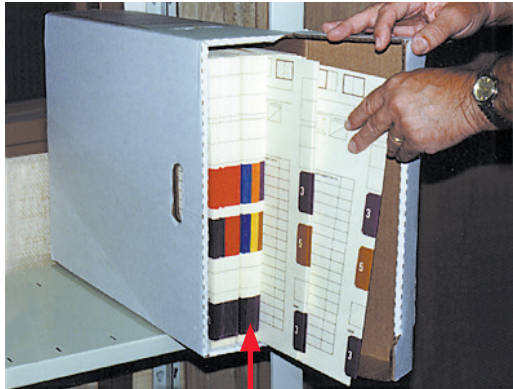
Cat.#ETX-70

(15 boxes per case)



Horizontal Filing

Vertical Filing



Easy to file vertically or horizontally!

## Caliper

Accurately measures body thickness to be x-rayed, up to 21" in depth. Calibrated in both inches and cm. Made of durable aluminum. 1" wide x 2 1/4" tall x 10 1/8" leg. Ships @ 1 lb.

#CAL-21





ADMINISTRATION/MANUFACTURING

7117 Centennial Blvd. Nashville, TN 37209

Orders can be placed online or sent to [orders@techno-aide.com](mailto:orders@techno-aide.com)

For official Quotes: [quotes@techno-aide.com](mailto:quotes@techno-aide.com)

Any questions can be directed to [customerservice@techno-aide.com](mailto:customerservice@techno-aide.com)

P: 800.251.2629 or 615.350.7030

F: 800.554.6275 or 615.350.7879

[techno-aide.com](http://techno-aide.com)